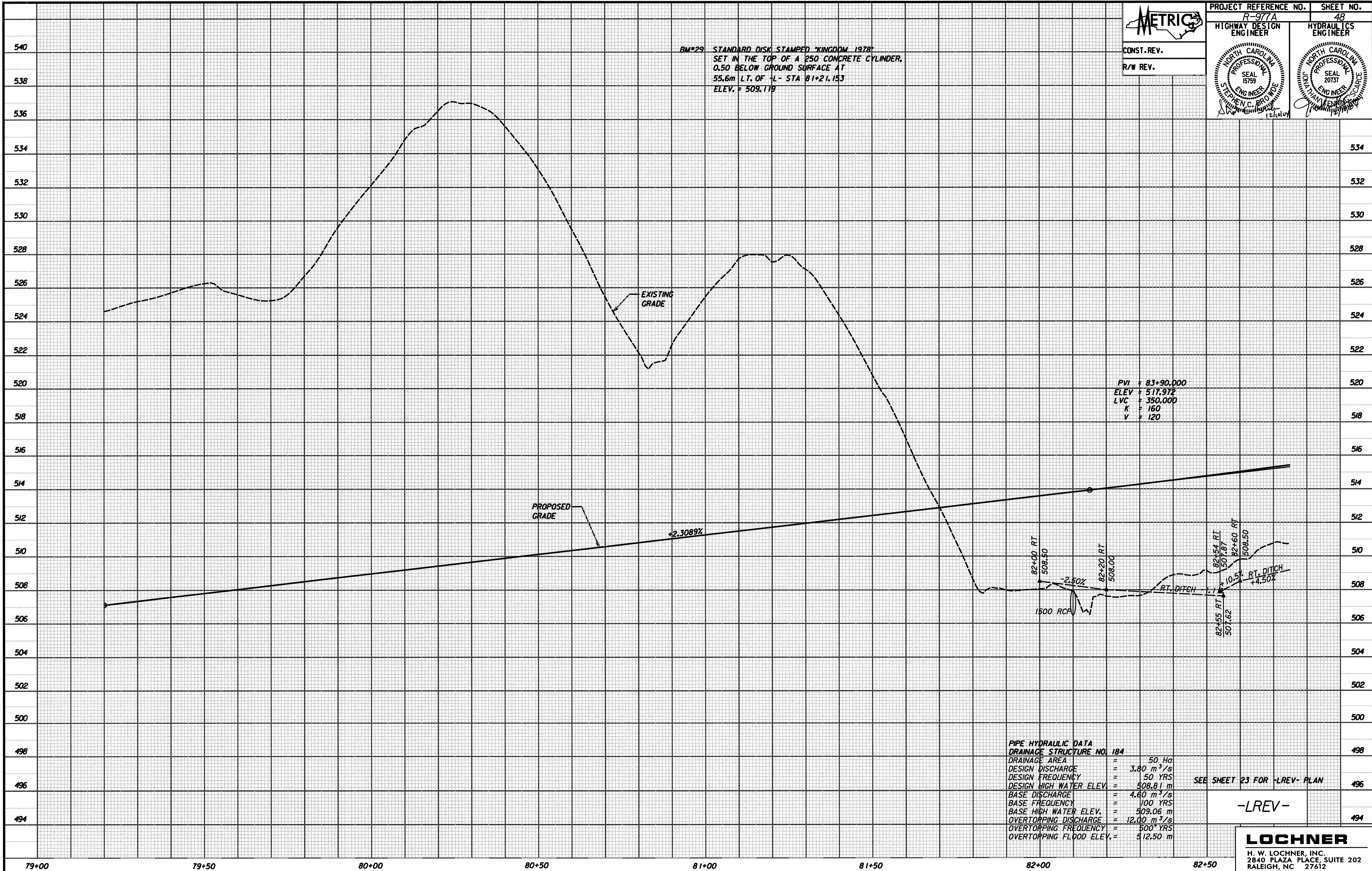


CONST. REV.  
R/W REV.

BM\*29 STANDARD DISK STAMPED "KINGDOM 1978"  
SET IN THE TOP OF A 250 CONCRETE CYLINDER,  
0.50 BELOW GROUND SURFACE AT  
55.6m LT. OF +L- STA 81+21.153  
ELEV. = 509.119



PVI = 83+90.000  
ELEV = 517.972  
LVC = 350.000  
K = 160  
V = 120

PIPE HYDRAULIC DATA  
DRAINAGE STRUCTURE NO. 184

DRAINAGE AREA	=	50 Ha
DESIGN DISCHARGE	=	3.80 m <sup>3</sup> /s
DESIGN FREQUENCY	=	50 YRS
DESIGN HIGH WATER ELEV.	=	508.81 m
BASE DISCHARGE	=	4.60 m <sup>3</sup> /s
BASE FREQUENCY	=	100 YRS
BASE HIGH WATER ELEV.	=	509.06 m
OVERTOPPING DISCHARGE	=	12.00 m <sup>3</sup> /s
OVERTOPPING FREQUENCY	=	500 YRS
OVERTOPPING FLOOD ELEV.	=	512.50 m

SEE SHEET 23 FOR -LREV- PLAN

-LREV-

...:\desig\m\98777\_P01\_PROF.dgn 12/19/2004 5:38:12 AM