

PROJECT REFERENCE NO. R-977A	SHEET NO. 49
HIGHWAY DESIGN ENGINEER	HYDRAULICS ENGINEER

BM#30 STANDARD DISK STAMPED "ROOSTER 1978"
SET IN THE TOP OF A 250 CONCRETE CYLINDER,
FLUSH WITH GROUND SURFACE AT
8.0m RT. OF -L- STA 83+80.266
ELEV. = 518.891

PVI = 83+90.000
ELEV = 517.972
LVC = 350.000
K = 160
V = 120

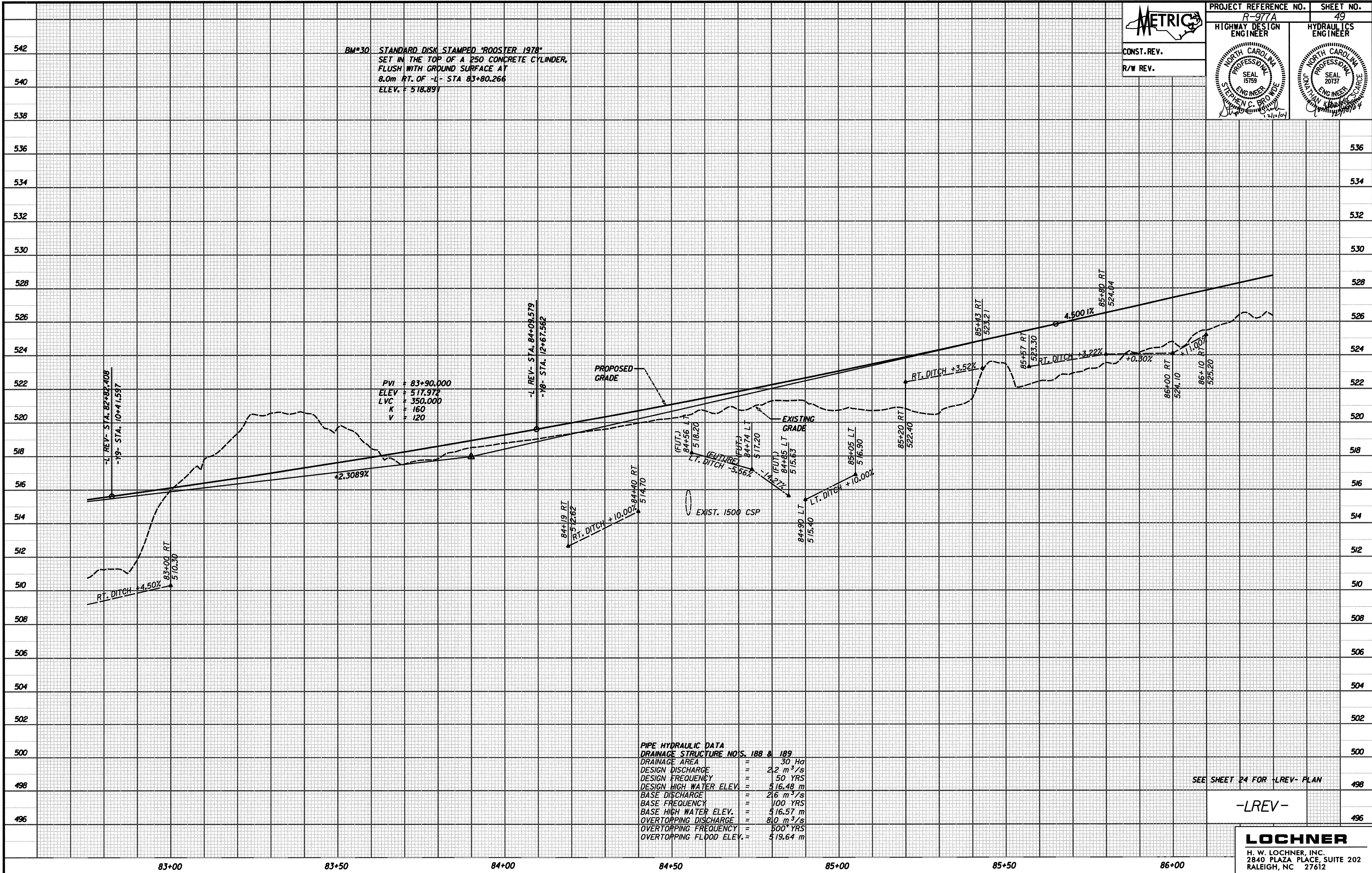
PIPE HYDRAULIC DATA
DRAINAGE STRUCTURE NOS. 188 & 189

DRAINAGE AREA	=	30 Ha
DESIGN DISCHARGE	=	2.2 m ³ /s
DESIGN FREQUENCY	=	50 YRS
DESIGN HIGH WATER ELEV.	=	516.48 m
BASE DISCHARGE	=	2.6 m ³ /s
BASE FREQUENCY	=	100 YRS
BASE HIGH WATER ELEV.	=	516.57 m
OVERTOPPING DISCHARGE	=	8.0 m ³ /s
OVERTOPPING FREQUENCY	=	500 YRS
OVERTOPPING FLOOD ELEV.	=	519.64 m

SEE SHEET 24 FOR -LREV- PLAN

-LREV-

LOCHNER
H. W. LOCHNER, INC.
2840 PLAZA PLACE, SUITE 202
RALEIGH, NC 27612



...Design\90077_B01_P001.dgn 12/9/2004 5:39:16 AM