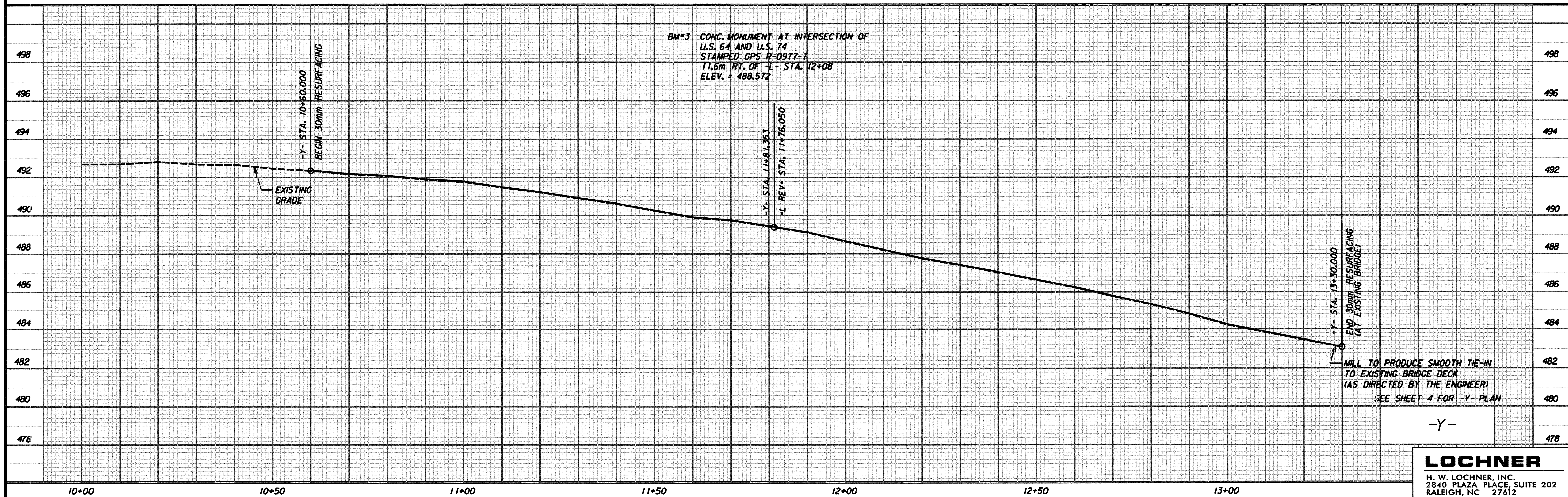
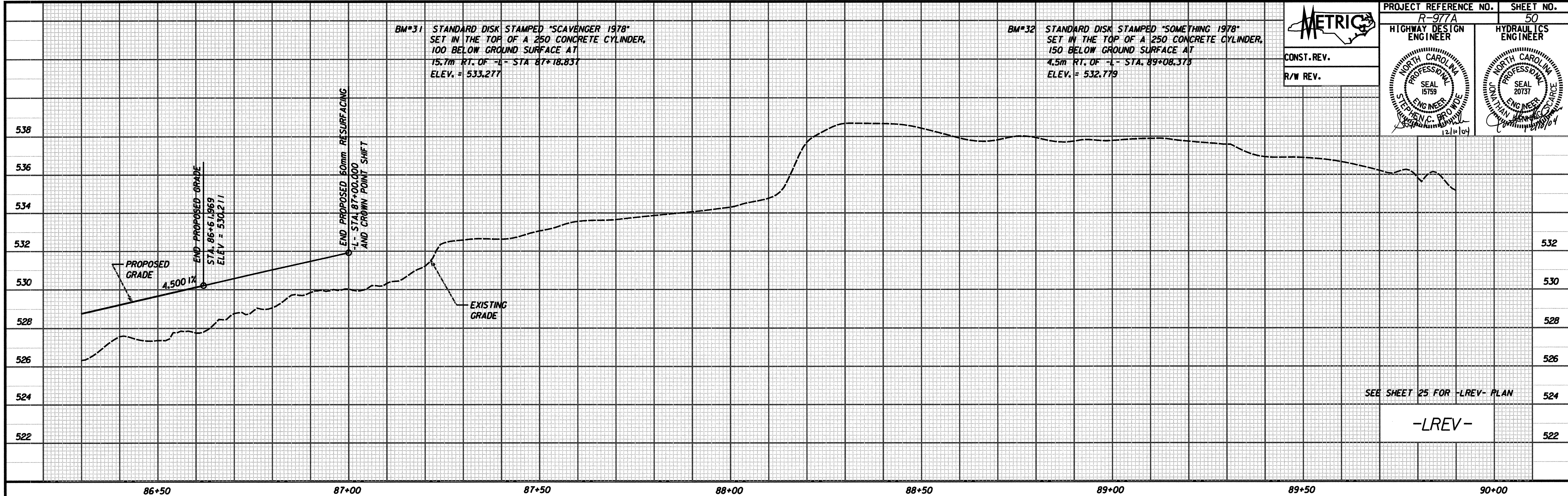


PROJECT REFERENCE NO. R-977A	SHEET NO. 50
HIGHWAY DESIGN ENGINEER	HYDRAULICS ENGINEER

BM#31 STANDARD DISK STAMPED "SCAVENGER 1978"  
SET IN THE TOP OF A 250 CONCRETE CYLINDER,  
100 BELOW GROUND SURFACE AT  
15.7m RT. OF -L- STA 87+18.837  
ELEV. = 533.277

BM#32 STANDARD DISK STAMPED "SOMETHING 1978"  
SET IN THE TOP OF A 250 CONCRETE CYLINDER,  
150 BELOW GROUND SURFACE AT  
4.5m RT. OF -L- STA. 89+08.375  
ELEV. = 532.779

CONST. REV.  
R/W REV.



BM#3 CONC. MONUMENT AT INTERSECTION OF  
U.S. 64 AND U.S. 74  
STAMPED GPS R-0977-7  
11.6m RT. OF -L- STA. 12+08  
ELEV. = 488.572

-Y-

**LOCHNER**  
H. W. LOCHNER, INC.  
2840 PLAZA PLACE, SUITE 202  
RALEIGH, NC 27612

\\nas101\98777\proj\poc\l\_ghm 12/29/2004 6:38:21 AM