
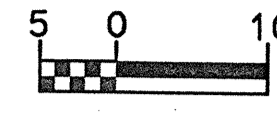


REVISIONS

  CONST. REV.	PROJECT REFERENCE NO.	SHEET NO.
	R-977A	7
	HIGHWAY DESIGN ENGINEER	HYDRAULICS ENGINEER

~~-LREV-~~ PIs Sta 20+64.354  
 $\Theta s = 7^{\circ} 15' 09.5''$   
 $Ls = 100.000$   
 $LT = 66.723$   
 $ST = 33.384$

~~-LREV-~~ PI Sta 21+69.856  
 $\Delta = 20^{\circ} 43' 25.6''$  (LT)  
 $L = 142.871$   
 $T = 72.225$   
 $R = 395.000$   
 $DS = 100 \text{ km/h}$

~~-LREV-~~ PIs Sta 22+73.886  
 $\Theta s = 7^{\circ} 15' 09.5''$   
 $Ls = 100.000$   
 $LT = 66.723$   
 $ST = 33.384$

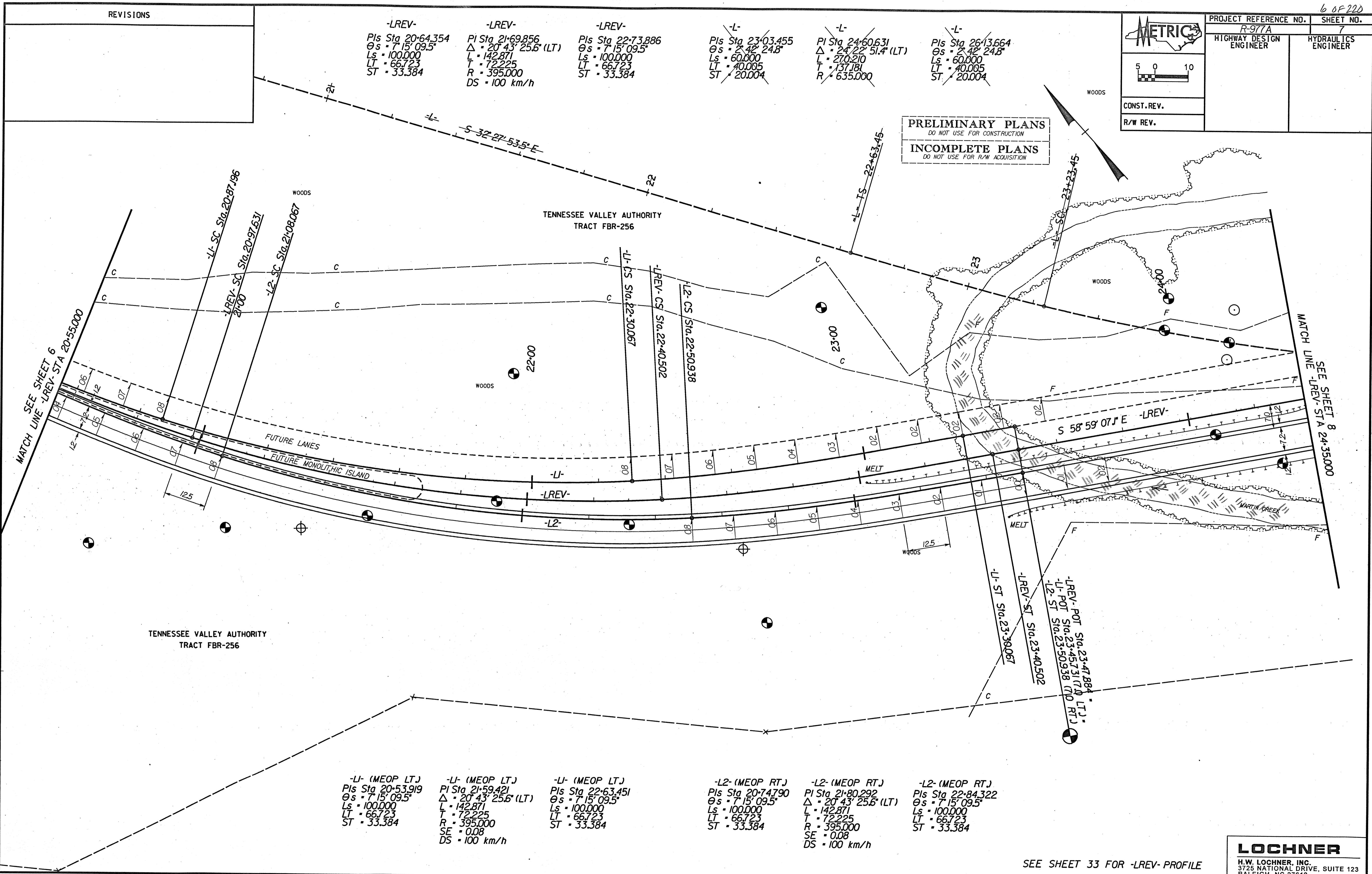
~~-L-~~ PIs Sta 23+03.455  
 $\Theta s = 2^{\circ} 42' 24.8''$   
 $Ls = 60.000$   
 $LT = 40.005$   
 $ST = 20.004$

~~-L-~~ PI Sta 24+60.631  
 $\Delta = 24^{\circ} 22' 51.4''$  (LT)  
 $L = 270.210$   
 $T = 137.181$   
 $R = 635.000$

~~-L-~~ PIs Sta 26+13.664  
 $\Theta s = 2^{\circ} 42' 24.8''$   
 $Ls = 60.000$   
 $LT = 40.005$   
 $ST = 20.004$

**PRELIMINARY PLANS**  
 DO NOT USE FOR CONSTRUCTION

**INCOMPLETE PLANS**  
 DO NOT USE FOR R/W ACQUISITION



~~-L1- (MEOP LTJ)~~ PIs Sta 20+53.919  
 $\Theta s = 7^{\circ} 15' 09.5''$   
 $Ls = 100.000$   
 $LT = 66.723$   
 $ST = 33.384$

~~-L1- (MEOP LTJ)~~ PI Sta 21+59.421  
 $\Delta = 20^{\circ} 43' 25.6''$  (LT)  
 $L = 142.871$   
 $T = 72.225$   
 $R = 395.000$   
 $SE = 0.08$   
 $DS = 100 \text{ km/h}$

~~-L1- (MEOP LTJ)~~ PIs Sta 22+63.451  
 $\Theta s = 7^{\circ} 15' 09.5''$   
 $Ls = 100.000$   
 $LT = 66.723$   
 $ST = 33.384$

~~-L2- (MEOP RTJ)~~ PIs Sta 20+74.790  
 $\Theta s = 7^{\circ} 15' 09.5''$   
 $Ls = 100.000$   
 $LT = 66.723$   
 $ST = 33.384$

~~-L2- (MEOP RTJ)~~ PI Sta 21+80.292  
 $\Delta = 20^{\circ} 43' 25.6''$  (LT)  
 $L = 142.871$   
 $T = 72.225$   
 $R = 395.000$   
 $SE = 0.08$   
 $DS = 100 \text{ km/h}$

~~-L2- (MEOP RTJ)~~ PIs Sta 22+84.322  
 $\Theta s = 7^{\circ} 15' 09.5''$   
 $Ls = 100.000$   
 $LT = 66.723$   
 $ST = 33.384$

SEE SHEET 33 FOR -LREV- PROFILE

**LOCHNER**  
 H.W. LOCHNER, INC.  
 3725 NATIONAL DRIVE, SUITE 123  
 RALEIGH, NC 27612