

REVISIONS

-LREV-
 PIs Sta 28+62.544
 Os = 2° 56' 47.9"
 Ls = 90.000
 LT = 60.008
 ST = 30.008

-LREV-
 PIs Sta 31+46.653
 Δ = 32° 23' 19" (LT)
 L = 494.627
 T = 254.117
 R = 875.000
 SE = 0.06
 DS = 105 km/h

-LREV-
 PIs Sta 34+17.171
 Os = 2° 56' 47.9"
 Ls = 90.000
 LT = 60.008
 ST = 30.008

-L-
 PIs Sta 28+75.548
 Os = 1° 57' 51.9"
 Ls = 60.000
 LT = 40.002
 ST = 20.002

-L-
 PIs Sta 31+38.854
 Δ = 31° 04' 44" (LT)
 L = 474.626
 T = 243.308
 R = 875.000

-L-
 PIs Sta 33+90.174
 Os = 1° 57' 51.9"
 Ls = 60.000
 LT = 40.002
 ST = 20.002

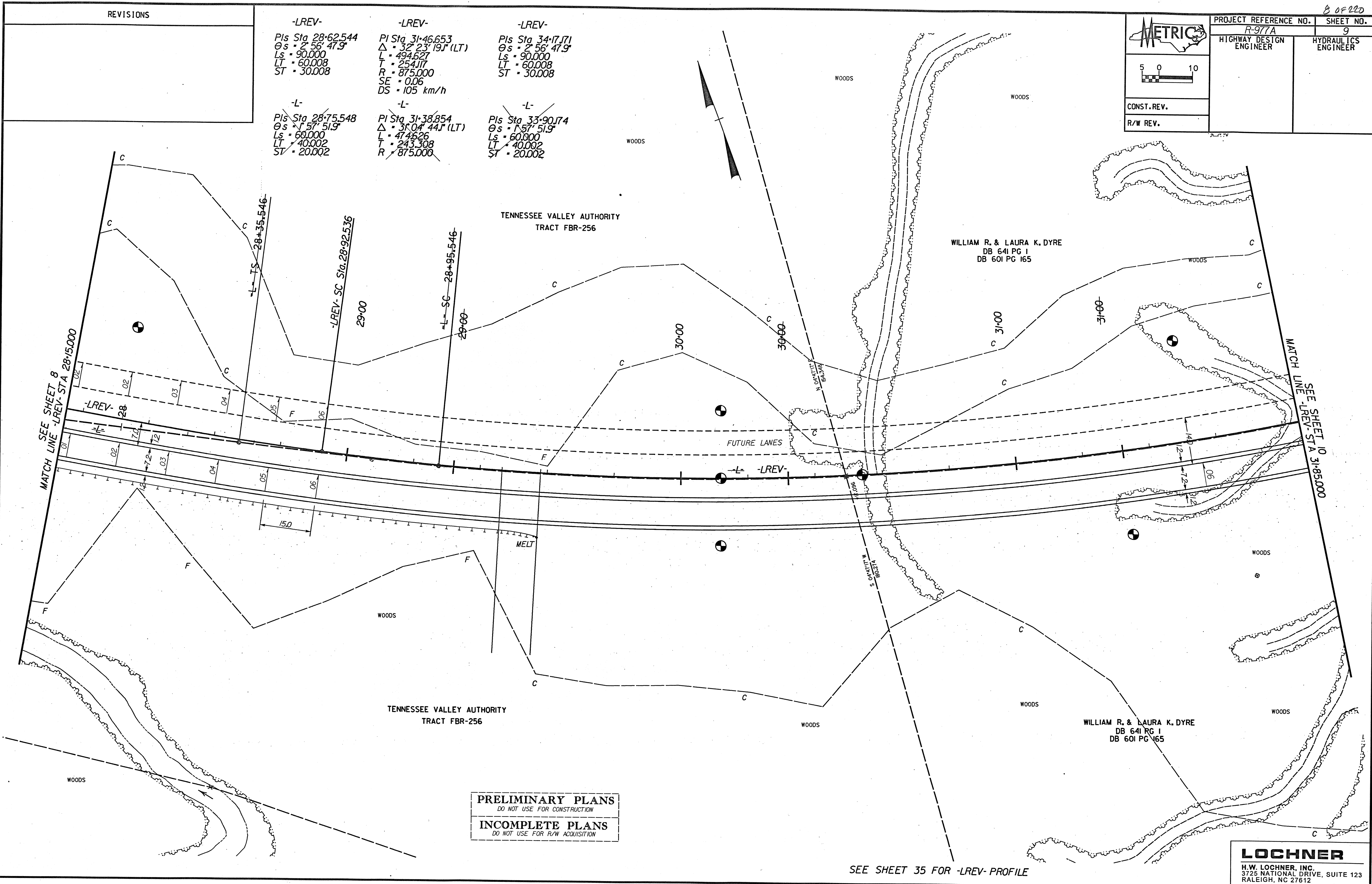
METRIC

5 0 10

CONST. REV.

R/W REV.

PROJECT REFERENCE NO. R-977A	SHEET NO. 9
HIGHWAY DESIGN ENGINEER	HYDRAULICS ENGINEER



PRELIMINARY PLANS
 DO NOT USE FOR CONSTRUCTION

INCOMPLETE PLANS
 DO NOT USE FOR R/W ACQUISITION

SEE SHEET 35 FOR -LREV- PROFILE

LOCHNER

H.W. LOCHNER, INC.
 3725 NATIONAL DRIVE, SUITE 123
 RALEIGH, NC 27612