

REVISIONS

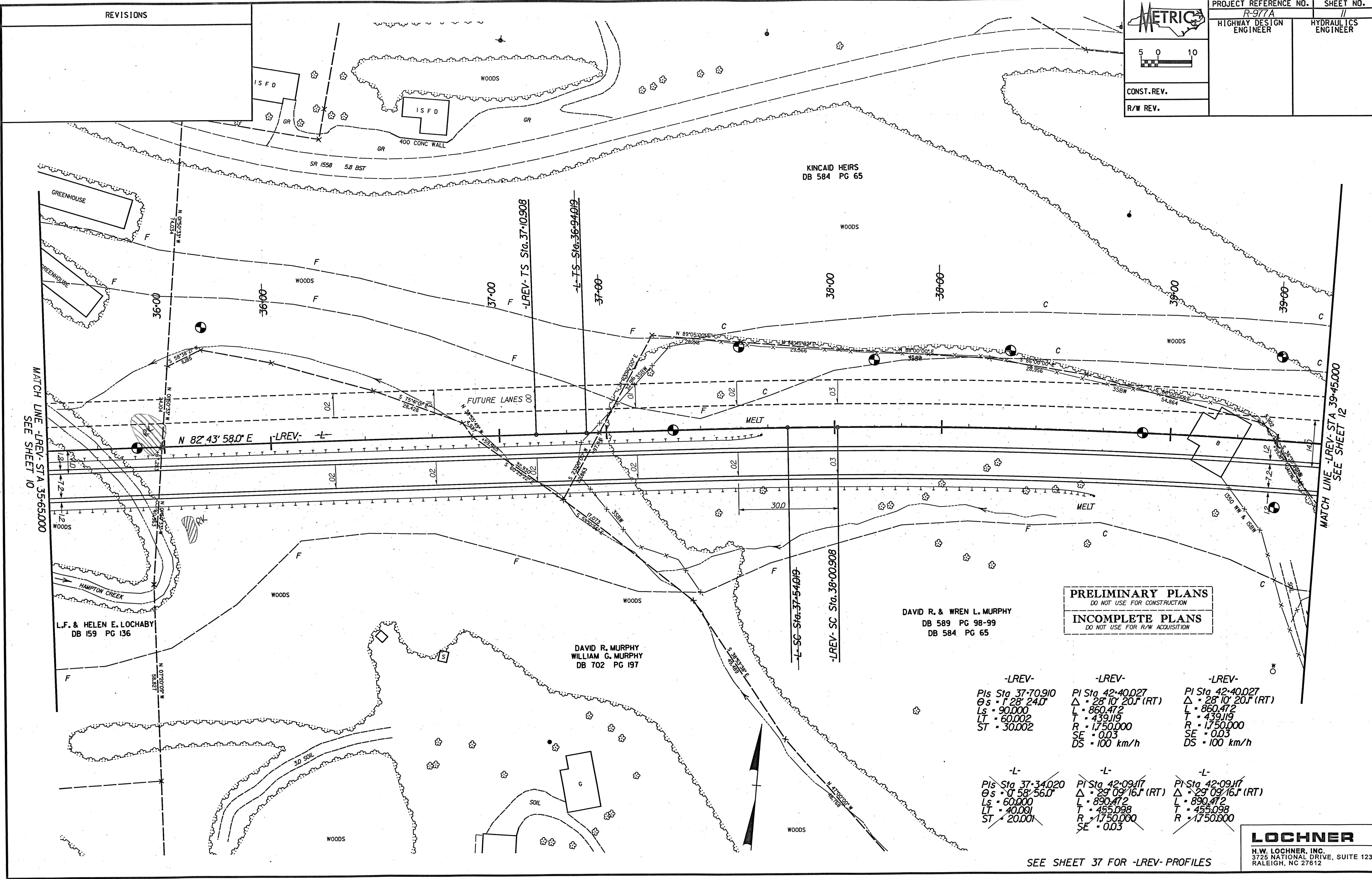
METRIC

5 0 10

CONST. REV.

R/W REV.

PROJECT REFERENCE NO.	SHEET NO.
R-977A	11
HIGHWAY DESIGN ENGINEER	HYDRAULICS ENGINEER



L.F. & HELEN E. LOCHABY
DB 159 PG 136

DAVID R. MURPHY
WILLIAM G. MURPHY
DB 702 PG 197

DAVID R. & WREN L. MURPHY
DB 589 PG 98-99
DB 584 PG 65

PRELIMINARY PLANS
DO NOT USE FOR CONSTRUCTION

INCOMPLETE PLANS
DO NOT USE FOR R/W ACQUISITION

-LREV-	-LREV-	-LREV-
PIs Sta 37+70.910	PI Sta 42+40.027	PI Sta 42+40.027
θs = 1° 28' 24.0"	Δ = 28' 10" 20.1" (RT)	Δ = 28' 10" 20.1" (RT)
Ls = 90.000	L = 860.472	L = 860.472
LT = 60.002	T = 439.119	T = 439.119
ST = 30.002	R = 1,750.000	R = 1,750.000
	SE = 0.03	SE = 0.03
	DS = 100 km/h	DS = 100 km/h
-L-	-L-	-L-
PIs Sta 37+34.020	PI Sta 42+09.117	PI Sta 42+09.117
θs = 0° 58' 56.0"	Δ = 29° 09' 16.1" (RT)	Δ = 29° 09' 16.1" (RT)
Ls = 60.000	L = 890.472	L = 890.472
LT = 40.091	T = 455.098	T = 455.098
ST = 20.001	R = 1,750.000	R = 1,750.000
	SE = 0.03	

SEE SHEET 37 FOR -LREV- PROFILES

LOCHNER
H.W. LOCHNER, INC.
3725 NATIONAL DRIVE, SUITE 123
RALEIGH, NC 27612