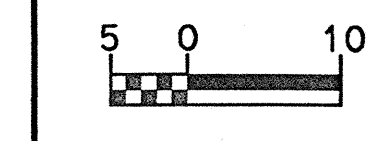


PROJECT REFERENCE NO.	SHEET NO.
R-977A	17
HIGHWAY DESIGN ENGINEER	HYDRAULICS ENGINEER
CONST. REV.	
R/W REV.	



REVISIONS

-L-
 Pts Sta 52+13.333
 $\theta_s = 2^\circ 28' 31.5''$
 Ls = 60.000
 LT = 40.001
 ST = 20.001

-L-
 Pts Sta 55+27.374
 $\Delta = 28^\circ 19' 50.9''$ (LT)
 L = 576.053
 T = 294.042
 R = 1,165.000

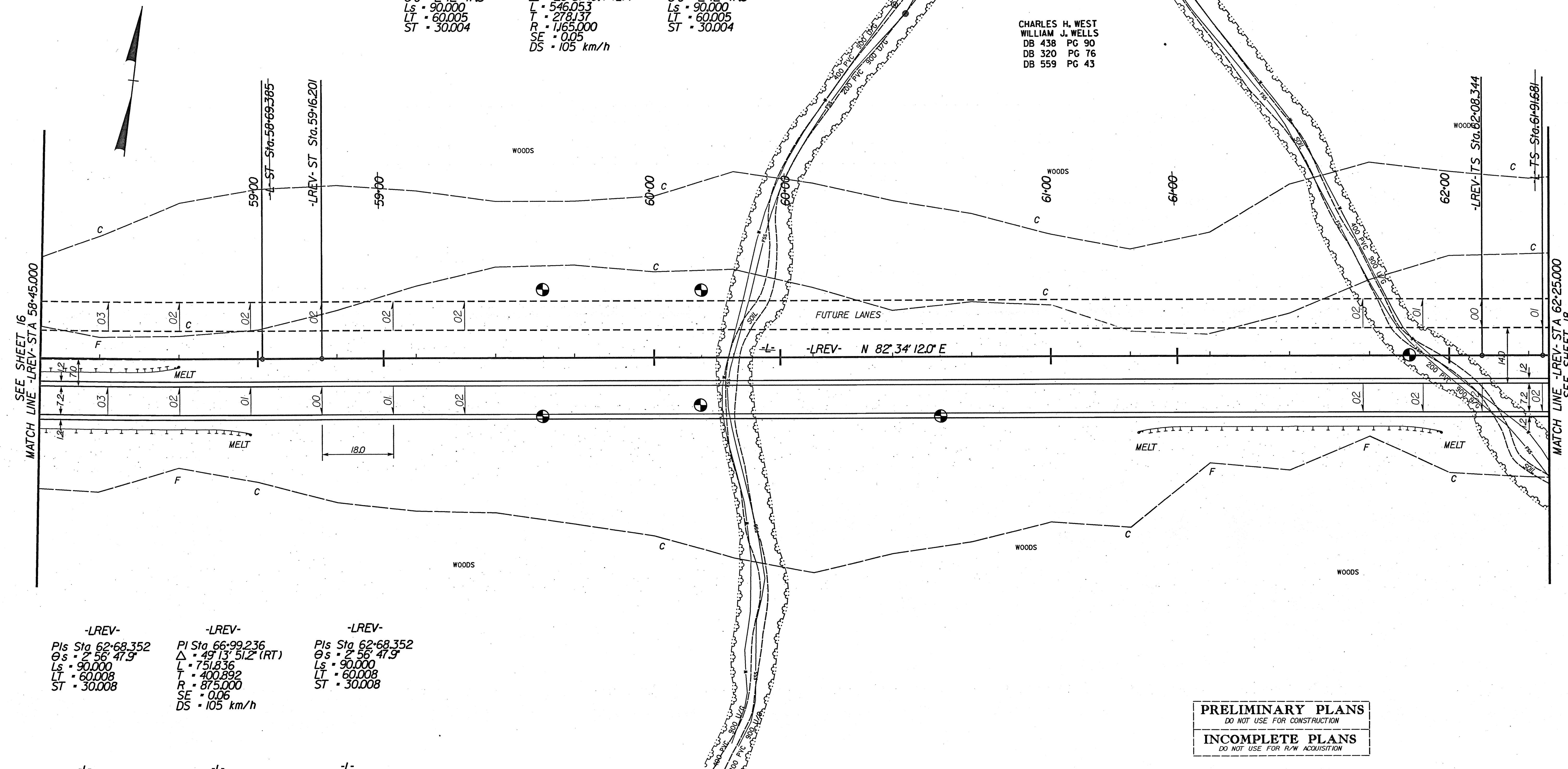
-L-
 Pts Sta 58+29.386
 $\theta_s = 1^\circ 28' 31.5''$
 Ls = 60.000
 LT = 40.001
 ST = 20.001

-LREV-
 Pts Sta 52+50.533
 $\theta_s = 2^\circ 12' 47.3''$
 Ls = 90.000
 LT = 60.005
 ST = 30.004

-LREV-
 Pts Sta 55+58.285
 $\Delta = 26^\circ 51' 19.4''$ (LT)
 L = 546.053
 T = 278.137
 R = 1,165.000
 SE = 0.05
 DS = 105 km/h

-LREV-
 Pts Sta 58+56.205
 $\theta_s = 2^\circ 12' 47.3''$
 Ls = 90.000
 LT = 60.005
 ST = 30.004

CHARLES H. WEST
 WILLIAM J. WELLS
 DB 438 PG 90
 DB 320 PG 76
 DB 559 PG 43



-LREV-
 Pts Sta 62+68.352
 $\theta_s = 2^\circ 56' 47.9''$
 Ls = 90.000
 LT = 60.008
 ST = 30.008

-LREV-
 Pts Sta 66+99.236
 $\Delta = 49^\circ 13' 51.2''$ (RT)
 L = 751.836
 T = 400.892
 R = 875.000
 SE = 0.06
 DS = 105 km/h

-LREV-
 Pts Sta 62+68.352
 $\theta_s = 2^\circ 56' 47.9''$
 Ls = 90.000
 LT = 60.008
 ST = 30.008

-L-
 Pts Sta 62+31.683
 $\theta_s = 1^\circ 57' 51.9''$
 Ls = 60.000
 LT = 40.002
 ST = 20.002

-L-
 Pts Sta 66+70.867
 $\Delta = 51^\circ 11' 43.1''$ (RT)
 L = 781.836
 T = 419.186
 R = 875.000

-L-
 Pts Sta 62+31.683
 $\theta_s = 1^\circ 57' 51.9''$
 Ls = 60.000
 LT = 40.002
 ST = 20.002

CHARLES H. WEST
 WILLIAM J. WELLS
 DB 438 PG 90
 DB 320 PG 76
 DB 559 PG 43

PRELIMINARY PLANS
 DO NOT USE FOR CONSTRUCTION

INCOMPLETE PLANS
 DO NOT USE FOR R/W ACQUISITION

LOCHNER
 H.W. LOCHNER, INC.
 3725 NATIONAL DRIVE, SUITE 123
 RALEIGH, NC 27612

SEE SHEET 42 FOR -LREV- PROFILE