 5 0 10 CONST. REV. R/W REV.	PROJECT REFERENCE NO.	SHEET NO.
	R-977A HIGHWAY DESIGN ENGINEER	18 HYDRAULICS ENGINEER

**-LREV-**  
 Pts Sta 62+68.352  
 $\theta_s = 2^\circ 56' 47.9"$   
 Ls = 90.000  
 LT = 60.008  
 ST = 30.008

**-LREV-**  
 Pts Sta 62+68.352  
 $\theta_s = 2^\circ 56' 47.9"$   
 Ls = 90.000  
 LT = 60.008  
 ST = 30.008

**-LREV-**  
 PI Sta 66+99.236  
 $\Delta = 49^\circ 13' 51.2" (RT)$   
 L = 751.836  
 T = 400.892  
 R = 875.000  
 SE = 0.06  
 DS = 105 km/h

**-L-**  
 Pts Sta 62+31.683  
 $\theta_s = 1^\circ 57' 51.9"$   
 Ls = 60.000  
 LT = 40.002  
 ST = 20.002

**-L-**  
 Pts Sta 62+31.683  
 $\theta_s = 1^\circ 57' 51.9"$   
 Ls = 60.000  
 LT = 40.002  
 ST = 20.002

**-L-**  
 PI Sta 66+70.867  
 $\Delta = 51^\circ 14' 43.1" (RT)$   
 L = 781.836  
 T = 419.886  
 R = 875.000

CHARLES H. WEST  
 WILLIAM J. WELLS  
 DB 438 PG 90  
 DB 320 PG 76  
 DB 559 PG 43

CHARLES H. WEST  
 WILLIAM J. WELLS  
 DB 438 PG 90  
 DB 320 PG 76  
 DB 559 PG 43

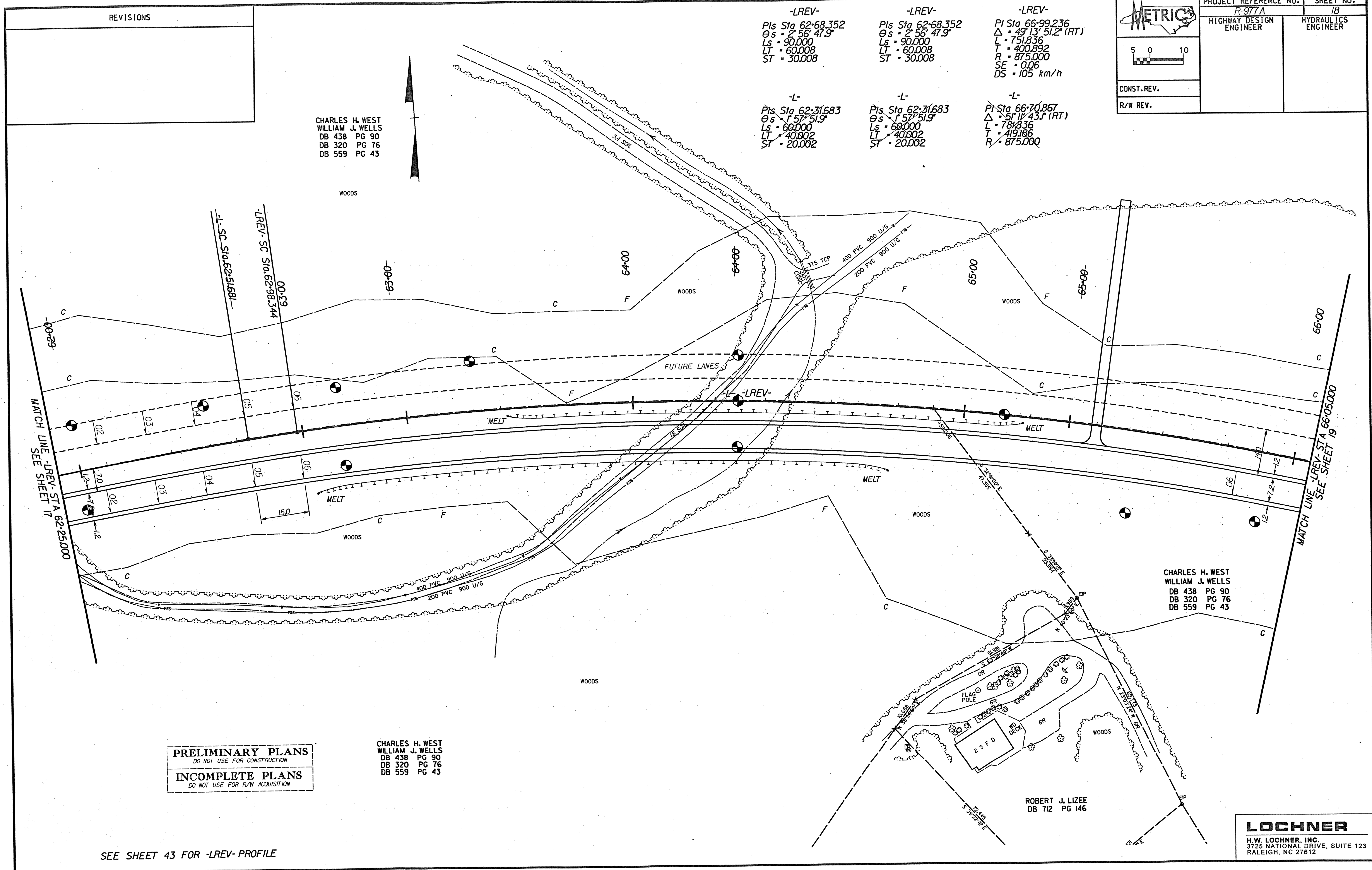
CHARLES H. WEST  
 WILLIAM J. WELLS  
 DB 438 PG 90  
 DB 320 PG 76  
 DB 559 PG 43

ROBERT J. LIZEE  
 DB 712 PG 146

**PRELIMINARY PLANS**  
 DO NOT USE FOR CONSTRUCTION  
**INCOMPLETE PLANS**  
 DO NOT USE FOR R/W ACQUISITION

SEE SHEET 43 FOR -LREV- PROFILE

**LOCHNER**  
 H.W. LOCHNER, INC.  
 3725 NATIONAL DRIVE, SUITE 123  
 RALEIGH, NC 27612



REVISIONS

