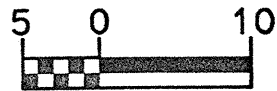
 5 0 10 	PROJECT REFERENCE NO.	SHEET NO.
	R-977A HIGHWAY DESIGN ENGINEER	19 HYDRAULICS ENGINEER
CONST. REV.		
R/W REV.		

REVISIONS

**-LREV-**  
 Pts Sta 62+68.352  
 Os = 2' 56" 47.9"  
 Ls = 90.000  
 Lt = 60.008  
 St = 30.008

**-LREV-**  
 Pts Sta 62+68.352  
 Os = 2' 56" 47.9"  
 Ls = 90.000  
 Lt = 60.008  
 St = 30.008

**-LREV-**  
 Pts Sta 66+99.236  
 Δ = 49' 13" 51.2" (RT)  
 L = 751.836  
 T = 400.892  
 R = 875.000  
 SE = 0.06  
 DS = 105 km/h

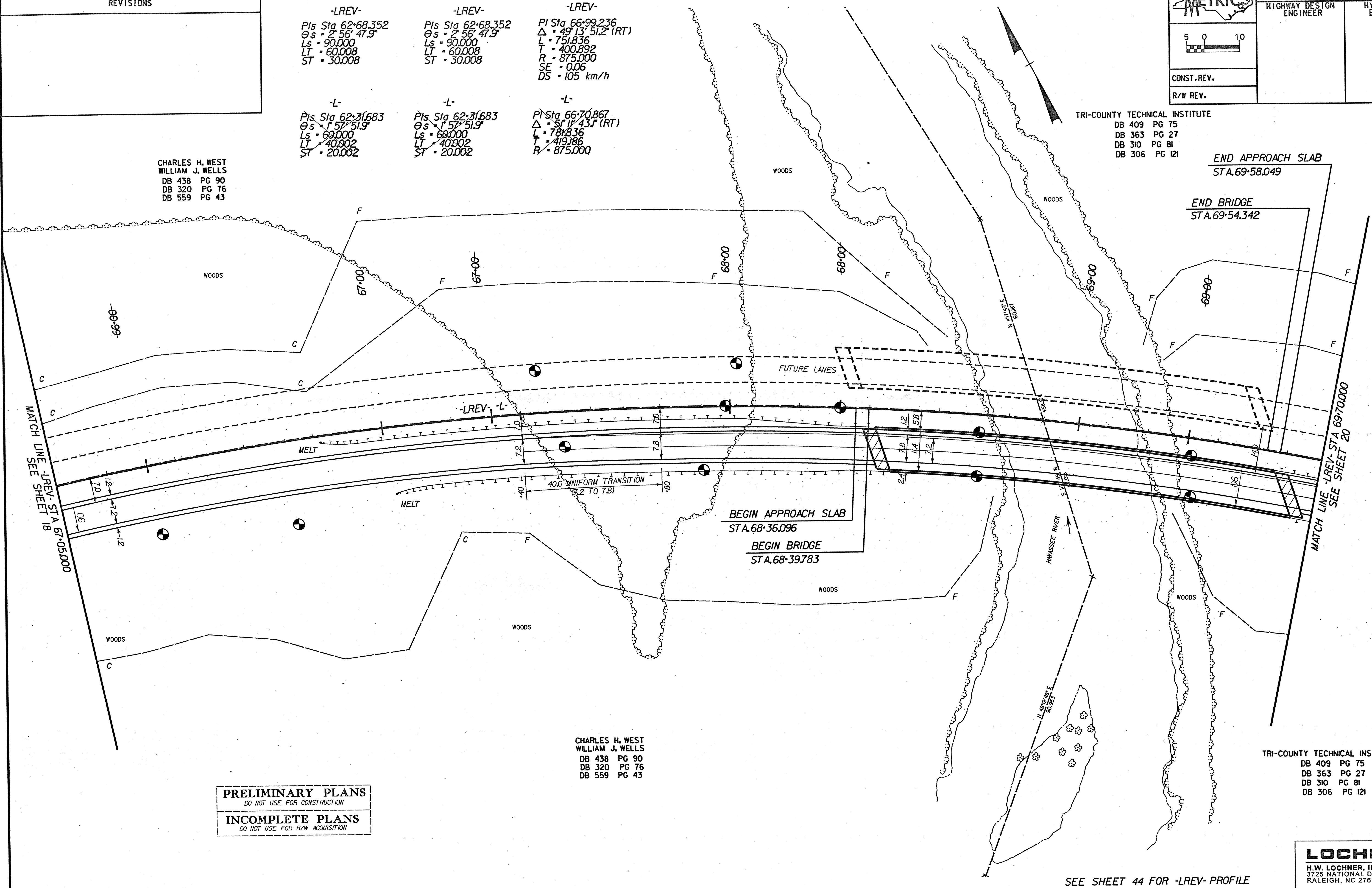
**-L-**  
 Pts Sta 62+31.683  
 Os = 1' 57" 51.9"  
 Ls = 69.000  
 Lt = 40.002  
 St = 20.002

**-L-**  
 Pts Sta 62+31.683  
 Os = 1' 57" 51.9"  
 Ls = 69.000  
 Lt = 40.002  
 St = 20.002

**-L-**  
 Pts Sta 66+70.867  
 Δ = 51' 14" 43.1" (RT)  
 L = 781.836  
 T = 419.186  
 R = 875.000

CHARLES H. WEST  
 WILLIAM J. WELLS  
 DB 438 PG 90  
 DB 320 PG 76  
 DB 559 PG 43

TRI-COUNTY TECHNICAL INSTITUTE  
 DB 409 PG 75  
 DB 363 PG 27  
 DB 310 PG 81  
 DB 306 PG 121



MATCH LINE -LREV- STA 67+05.000  
 SEE SHEET 18

MATCH LINE -LREV- STA 69+70.000  
 SEE SHEET 20

**PRELIMINARY PLANS**  
 DO NOT USE FOR CONSTRUCTION

**INCOMPLETE PLANS**  
 DO NOT USE FOR R/W ACQUISITION

CHARLES H. WEST  
 WILLIAM J. WELLS  
 DB 438 PG 90  
 DB 320 PG 76  
 DB 559 PG 43

TRI-COUNTY TECHNICAL INSTITUTE  
 DB 409 PG 75  
 DB 363 PG 27  
 DB 310 PG 81  
 DB 306 PG 121

**LOCHNER**  
 H.W. LOCHNER, INC.  
 3725 NATIONAL DRIVE, SUITE 123  
 RALEIGH, NC 27612

SEE SHEET 44 FOR -LREV- PROFILE