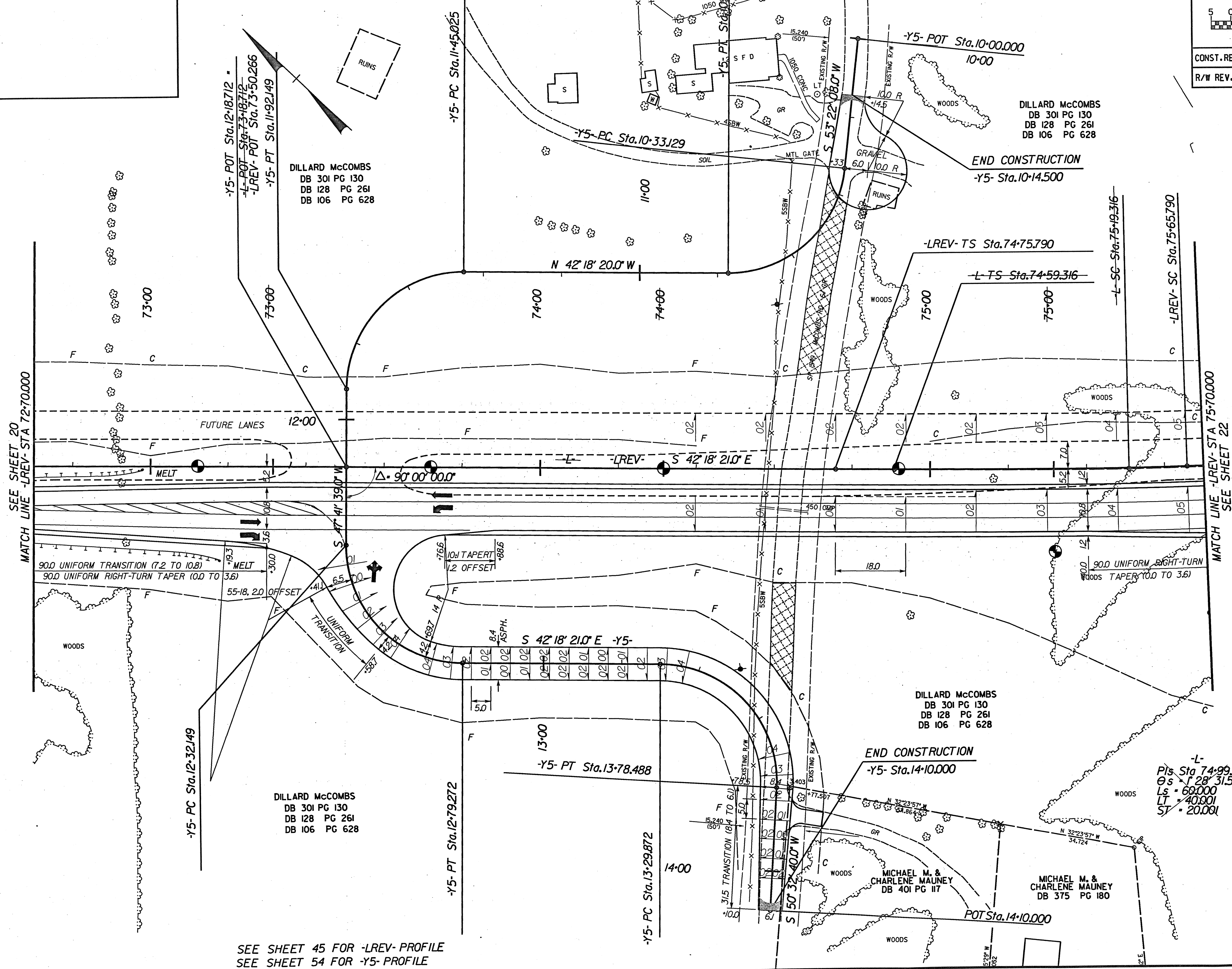
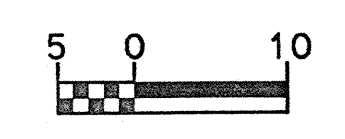


REVISIONS



PROJECT REFERENCE NO.		SHEET NO.	
R-977A		21	
HIGHWAY DESIGN ENGINEER		HYDRAULICS ENGINEER	
CONST. REV.			
R/W REV.			



SEE SHEET 45 FOR -LREV- PROFILE
 SEE SHEET 54 FOR -Y5- PROFILE

-Y5- PI Sta 13-61.403 Δ = 92°51'01.0" (RT) L = 48.616 T = 315.31 R = 30.000 SE = 0.04 Ro = 20.000 DS = 30 km/h	-Y5- PI Sta 12-62.149 Δ = 90°00'00.0" (LT) L = 47.124 T = 30.000 R = 30.000 SE = 0.04 Ro = AS SHOWN DS = 30 km/h
-Y5- PI Sta 11-75.025 Δ = 90°00'00.0" (LT) L = 47.124 T = 30.000 R = 30.000	-Y5- PI Sta 10-60.296 Δ = 84°19'32.0" (RT) L = 44.153 T = 27.167 R = 30.000
-LREV- Pis Sta 75-35.795 Θs = 2°12'47.3" Ls = 90.000 LT = 60.005 ST = 30.004	-LREV- PI Sta 81-02.675 Δ = 49°29'05.4" (LT) L = 1006.179 T = 536.885 R = 1165.000 SE = 0.05 DS = 105 km/h
-L- Pis Sta 86-01.973 Θs = 2°12'47.3" Ls = 90.000 LT = 60.005 ST = 30.004	

PRELIMINARY PLANS
 DO NOT USE FOR CONSTRUCTION
INCOMPLETE PLANS
 DO NOT USE FOR R/W ACQUISITION

LOCHNER
 H.W. LOCHNER, INC.
 3725 NATIONAL DRIVE, SUITE 123
 RALEIGH, NC 27612