

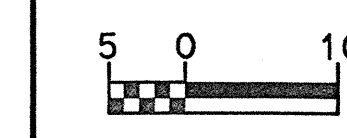
REVISIONS



PROJECT REFERENCE NO. R-977A SHEET NO. 23

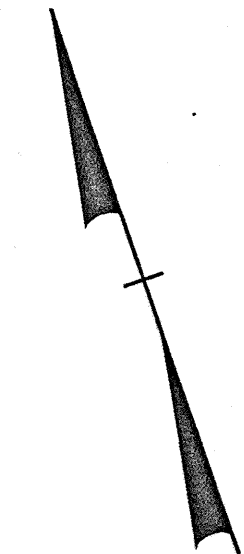
HIGHWAY DESIGN ENGINEER

HYDRAULICS ENGINEER



CONST. REV.

R/W REV.

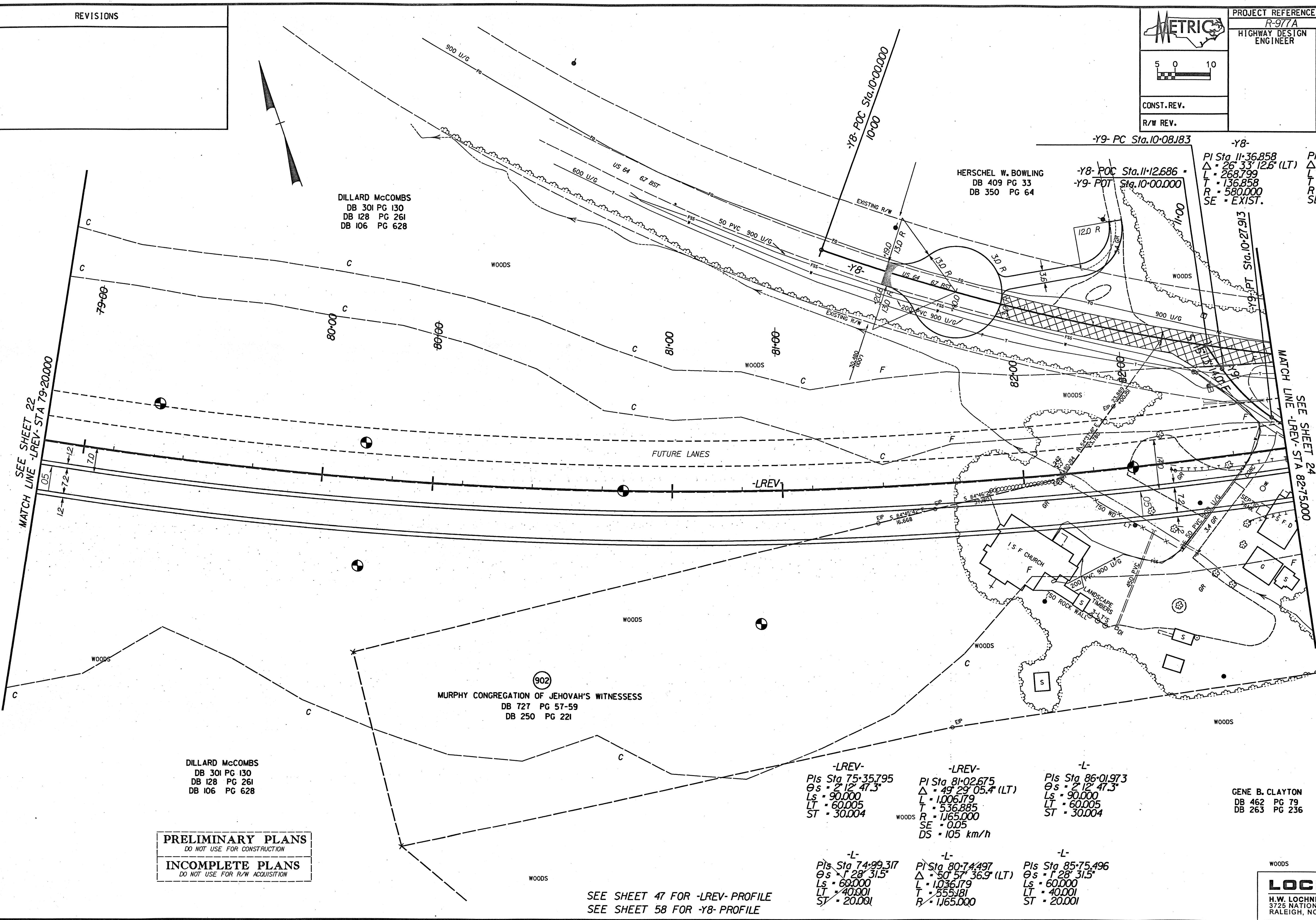


DILLARD McCOMBS
DB 301 PG 130
DB 128 PG 261
DB 106 PG 628

HERSCHEL W. BOWLING
DB 409 PG 33
DB 350 PG 64

-Y8-
PI Sta 11+36.858
Δ = 26' 33" 12.6' (LT)
L = 268.799
T = 136.858
R = 580.000
SE = EXIST.

-Y9-
PI Sta 10+18.178
Δ = 22' 36" 31.8' (LT)
L = 197.30
T = 9.995
R = 50.000
SE = EXIST.



SEE SHEET 22
MATCH LINE -LREV- STA 79+20.000

SEE SHEET 24
MATCH LINE -LREV- STA 82+75.000

DILLARD McCOMBS
DB 301 PG 130
DB 128 PG 261
DB 106 PG 628

902
MURPHY CONGREGATION OF JEHOVAH'S WITNESSES
DB 727 PG 57-59
DB 250 PG 221

-LREV-
PI Sta 75+35.795
θs = 2' 12' 47.3"
Ls = 90.000
LT = 60.005
ST = 30.004

-LREV-
PI Sta 81+02.675
Δ = 49' 29" 05.4' (LT)
L = 1006.179
T = 536.885
R = 1,65.000
SE = 0.05
DS = 105 km/h

-L-
PIs Sta 86+01.973
θs = 2' 12' 47.3"
Ls = 90.000
LT = 60.005
ST = 30.004

GENE B. CLAYTON
DB 462 PG 79
DB 263 PG 236

PRELIMINARY PLANS
DO NOT USE FOR CONSTRUCTION
INCOMPLETE PLANS
DO NOT USE FOR R/W ACQUISITION

SEE SHEET 47 FOR -LREV- PROFILE
SEE SHEET 58 FOR -Y8- PROFILE

-L-
PIs Sta 74+99.317
θs = 1' 28' 31.5"
Ls = 60.000
LT = 40.001
ST = 20.001

-L-
PI Sta 80+74.497
Δ = 50' 57" 36.9' (LT)
L = 1,036.179
T = 555.181
R = 1,65.000

-L-
PIs Sta 85+75.496
θs = 1' 28' 31.5"
Ls = 60.000
LT = 40.001
ST = 20.001

WOODS
LOCHNER
H.W. LOCHNER, INC.
3725 NATIONAL DRIVE, SUITE 123
RALEIGH, NC 27612