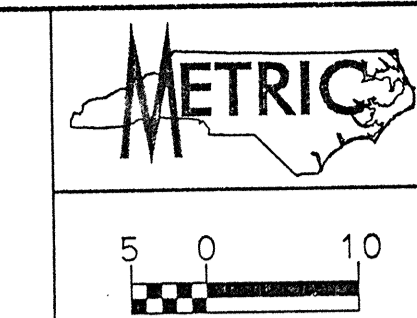


REVISIONS

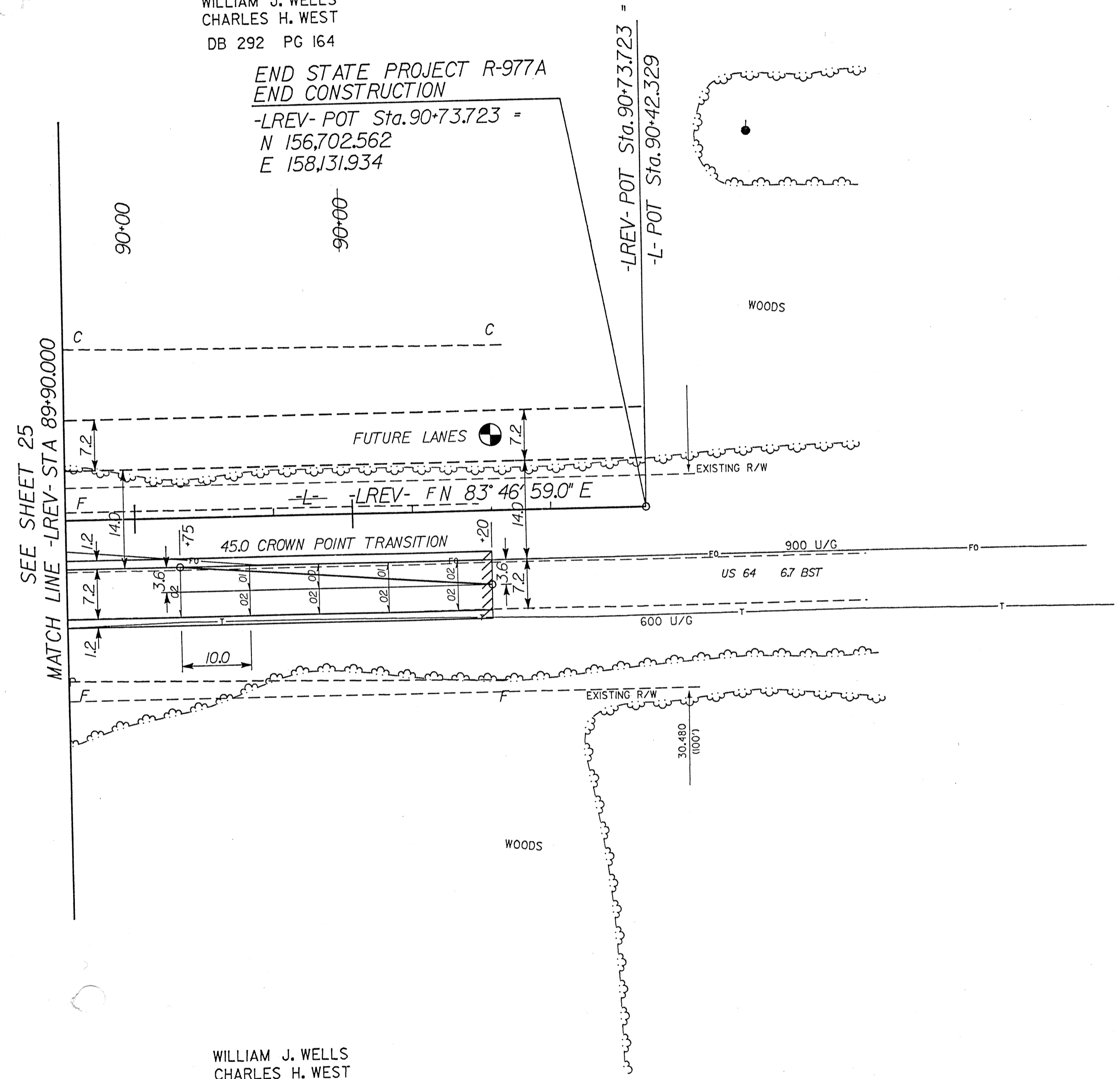


PROJECT REFERENCE NO. 25DP220		SHEET NO.
HIGHWAY DESIGN ENGINEER	HYDRAULICS ENGINEER	
CONST. REV.		
R/W REV.		

-Y6-
 PI Sta. 15+19.902
 $\Delta = 31^\circ 40' 24.6" (LT)$
 $L = 480.942$
 $T = 246.788$
 $R = 870.000$
 $SE = 0.05$

WILLIAM J. WELLS
 CHARLES H. WEST
 DB 292 PG 164

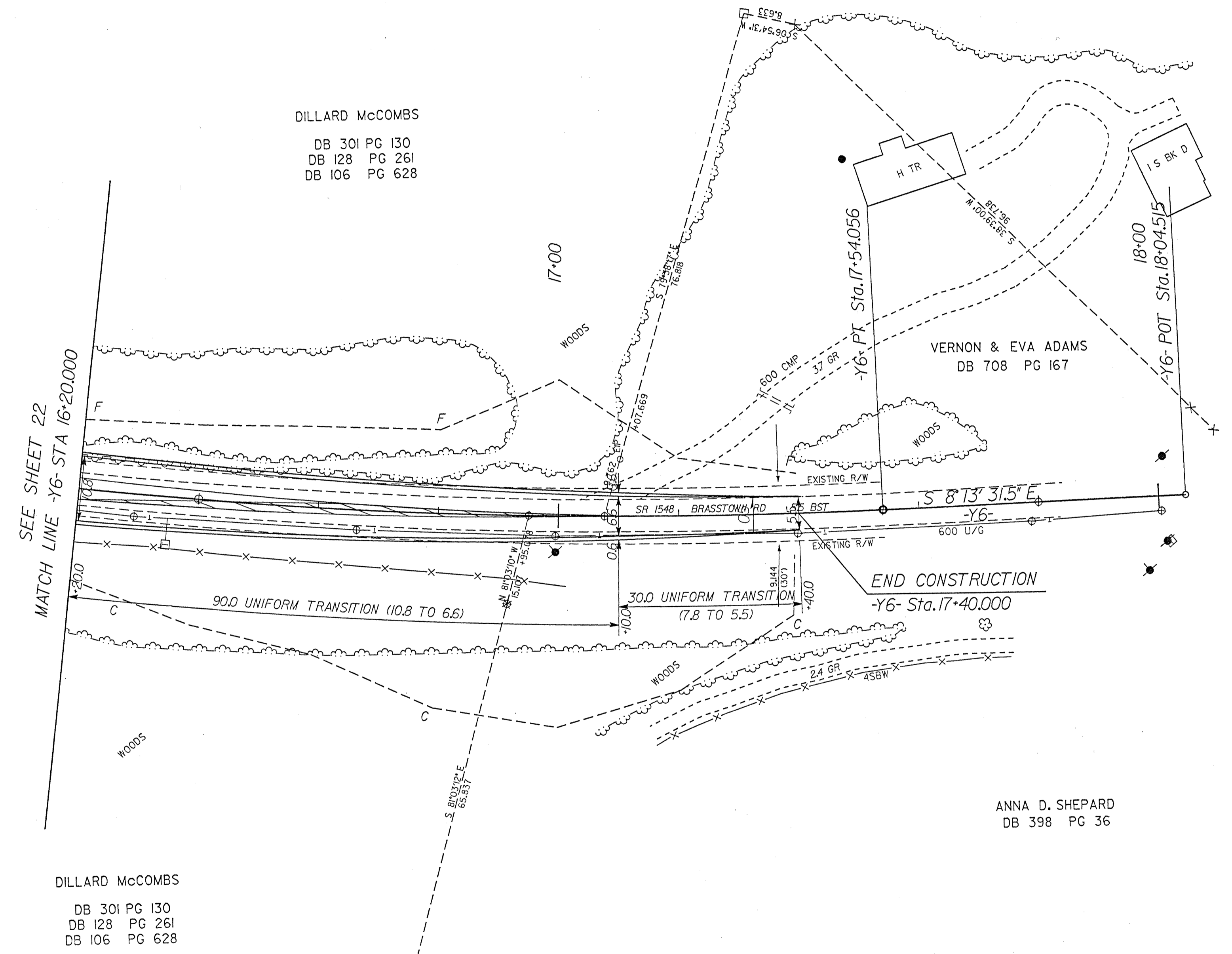
END STATE PROJECT R-977A
 END CONSTRUCTION
 -LREV- POT Sta. 90+73.723 =
 N 156.702.562
 E 158.131.934



WILLIAM J. WELLS
 CHARLES H. WEST
 DB 292 PG 164

PRELIMINARY PLANS
 DO NOT USE FOR CONSTRUCTION
 INCOMPLETE PLANS
 DO NOT USE FOR R/W ACQUISITION

DILLARD McCOMBS
 DB 301 PG 130
 DB 128 PG 261
 DB 106 PG 628



DILLARD McCOMBS
 DB 301 PG 130
 DB 128 PG 261
 DB 106 PG 628

ANNA D. SHEPARD
 DB 398 PG 36