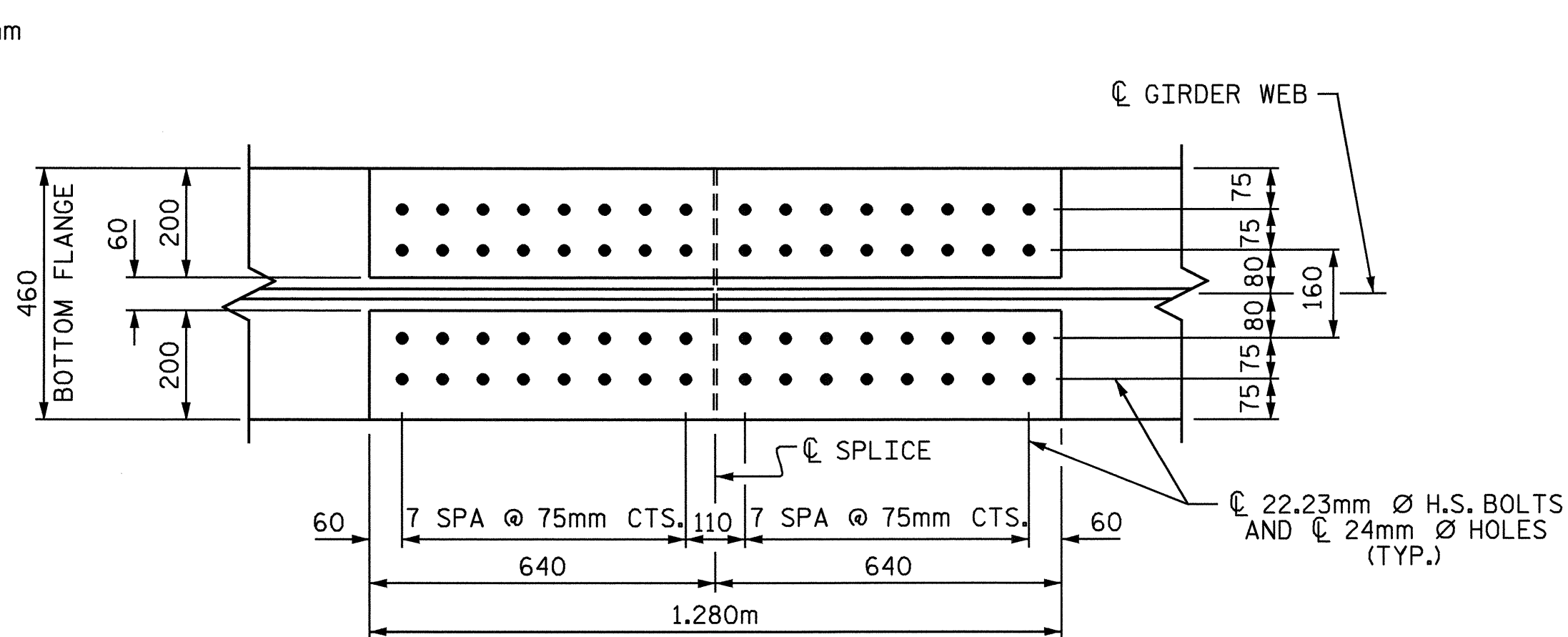
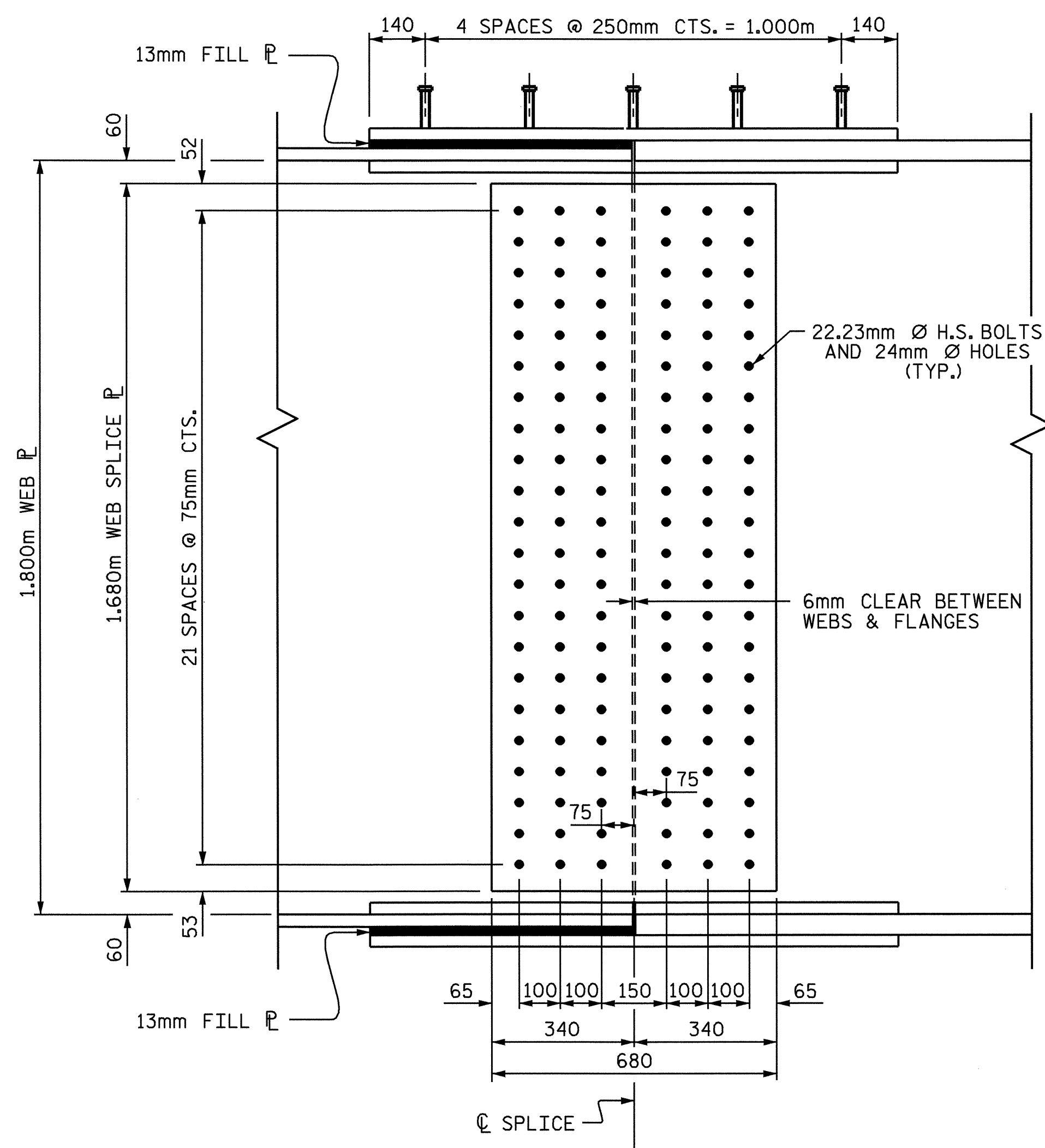


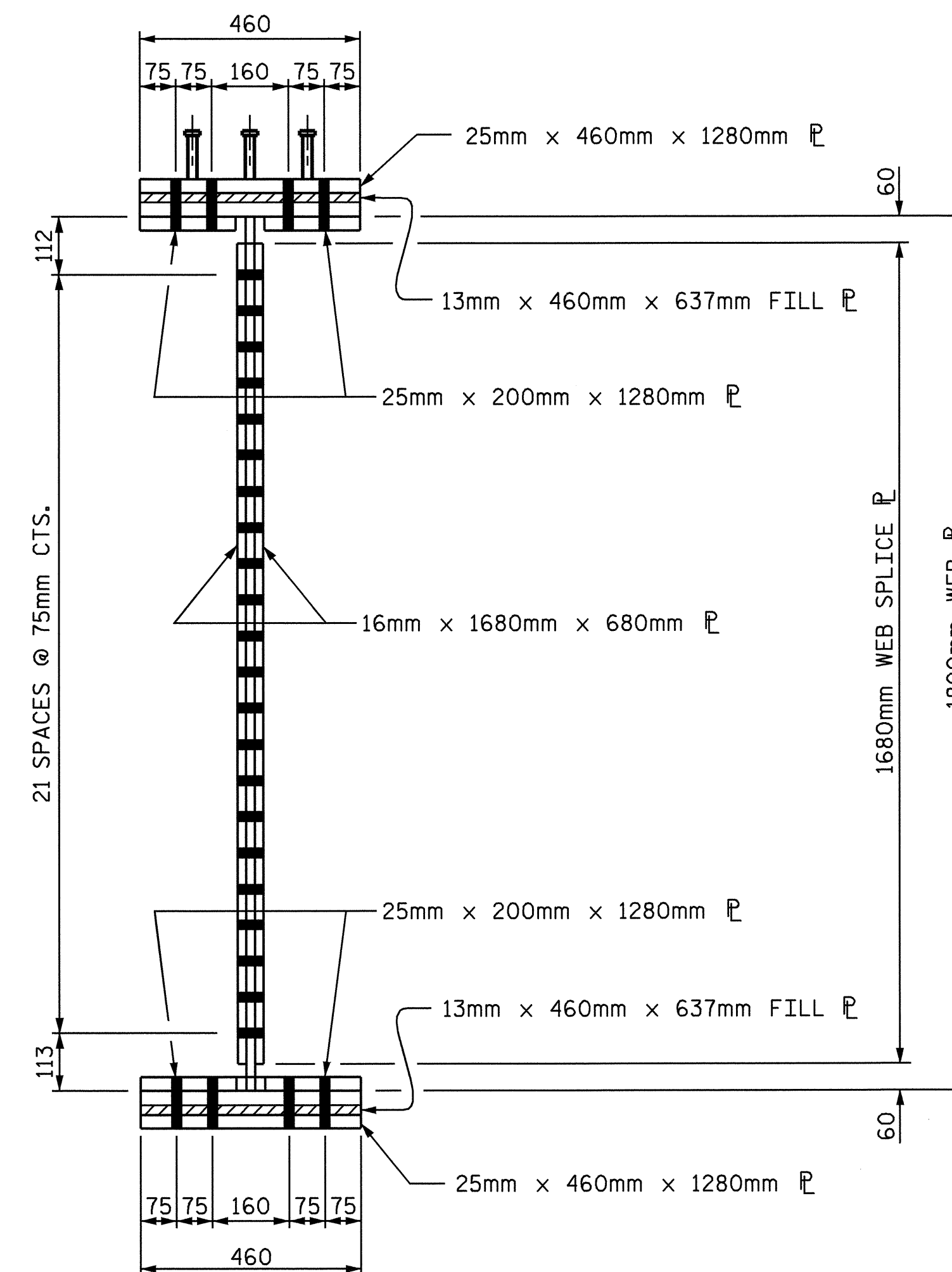
PLAN (TOP OF TOP FLANGE)



PLAN (TOP OF BOTTOM FLANGE)



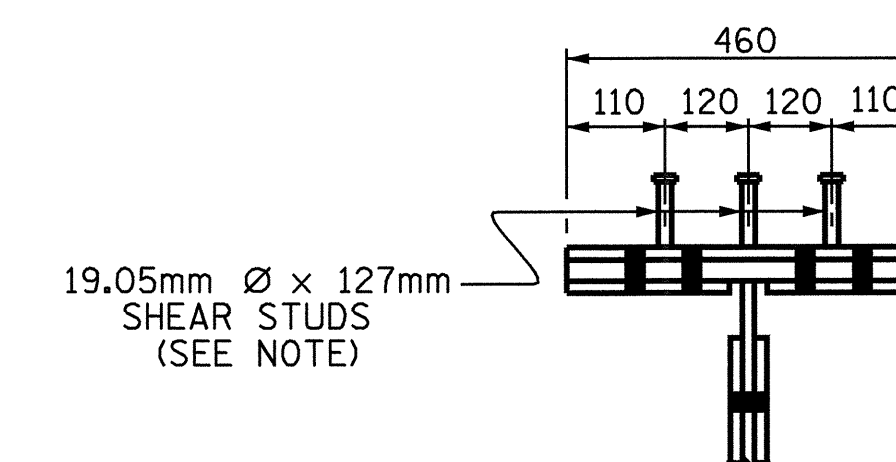
ELEVATION



SECTION A-A

DESCRIPTION	SIZE	NO. REQ'D. FOR ONE FIELD SPLICE	TOTAL REQ'D. FOR SPLICE
WEB SPLICE PLATE	16 x 680 x 1680	2	32
OUTER SPLICE PLATE TOP FLANGE W/SHEAR STUDS	25 x 460 x 1280	1	16
INNER SPLICE PLATE TOP FLANGE	25 x 200 x 1280	2	32
FILL PLATE TOP FLANGE	13 x 460 x 637	1	16
FILL PLATE BOTTOM FLANGE	13 x 460 x 637	1	16
INNER SPLICE PLATE BOTTOM FLANGE	25 x 200 x 1280	2	32
OUTER SPLICE PLATE BOTTOM FLANGE	25 x 460 x 1280	1	16

NOTE: 24mm Ø HOLES FOR 22.23mm Ø BOLTS.



SHEAR STUD DETAIL FOR TOP FLANGE SPLICE PLATE

NOTE: SHEAR STUDS ARE TO BE SHOP WELDED ON TOP OF PLATE BEFORE FIELD ASSEMBLY.

BOLTED FIELD SPLICE DETAILS

DRAWN BY : T. H. FANG/BNB DATE : 7-21-03  
 CHECKED BY : MIKE ALLEN DATE : 11-8-04

21-DEC-2004 07:31  
 W:\Squad\LR0977a\str4\bbbarodawala\R0977A.sd\_SS\_04.dgn  
 Isutton

Professional Engineer Seal for Ting H. Fang, No. 16301, dated 12/22/04.

PROJECT NO. R-0977A  
 CHEROKEE COUNTY  
 STATION: 41+19.524-LREV-

SHEET 4 OF 4

STATE OF NORTH CAROLINA  
 DEPARTMENT OF TRANSPORTATION  
 RALEIGH

SUPERSTRUCTURE

STRUCTURAL STEEL  
 DETAILS

REVISIONS						SHEET NO.
NO.	BY:	DATE:	NO.	BY:	DATE:	S-139
1			3			TOTAL SHEETS
2			4			230

STR.#4