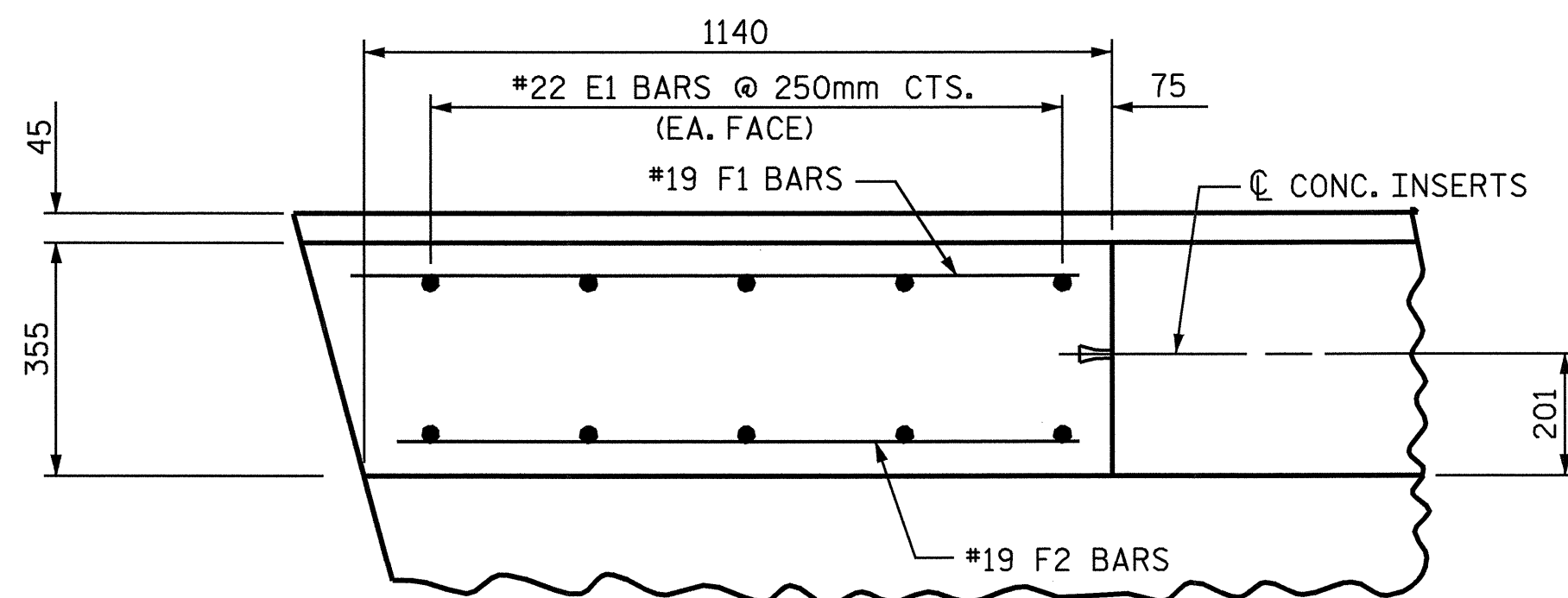
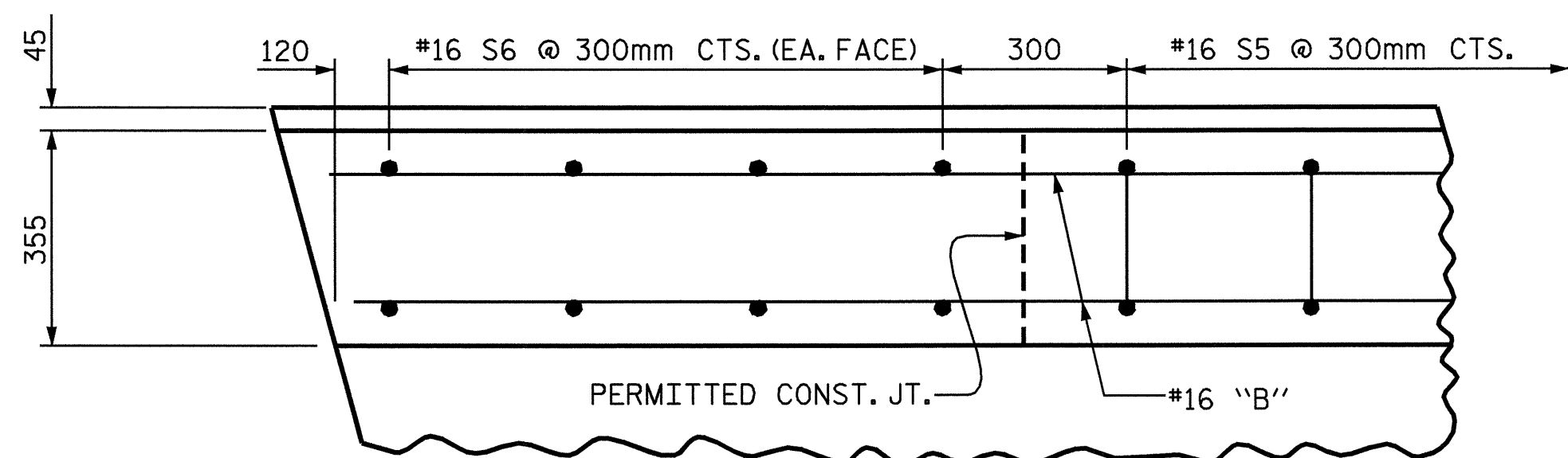


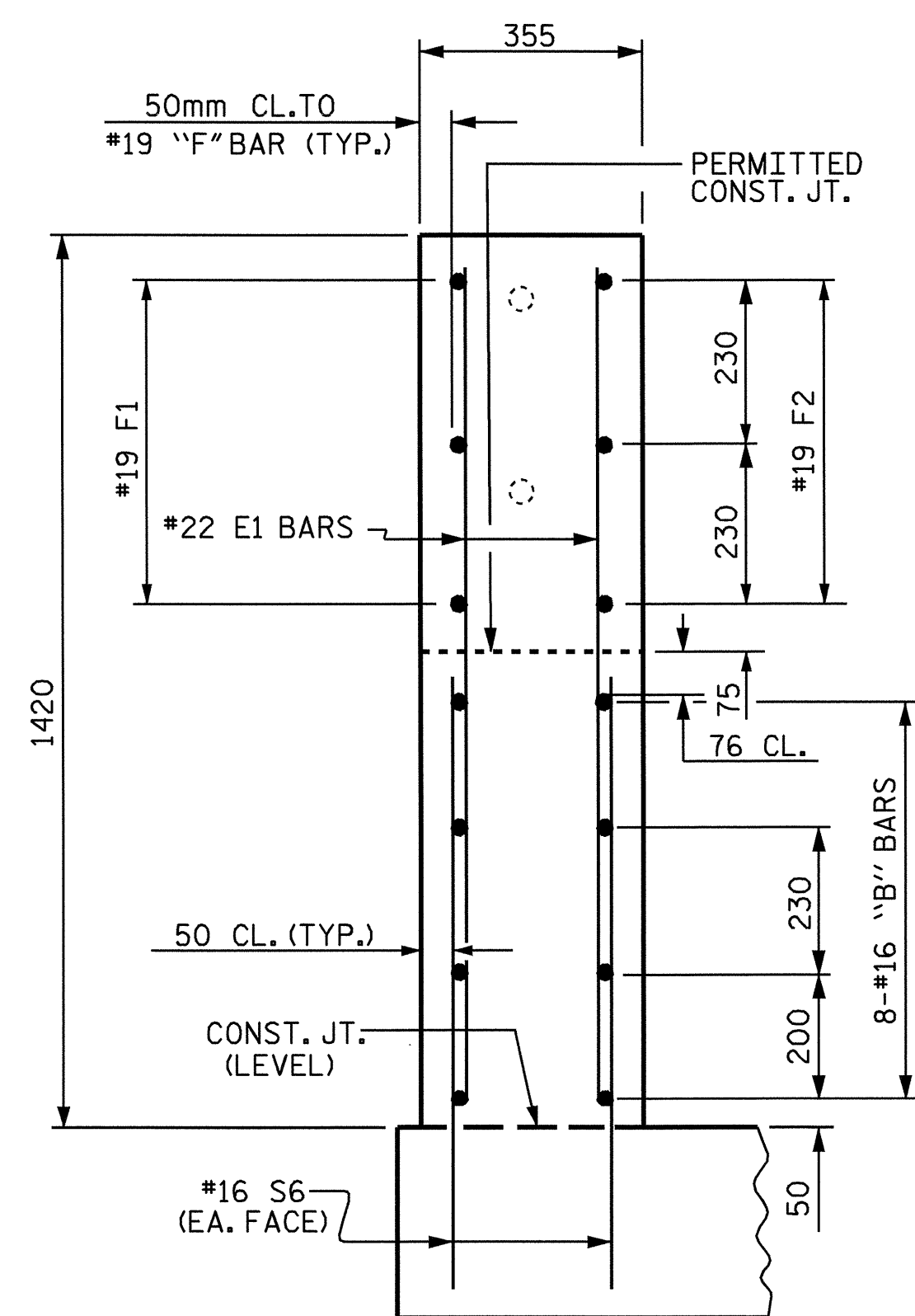
ELEVATION AT EXPANSION JOINTS  
PARAPET DETAILS



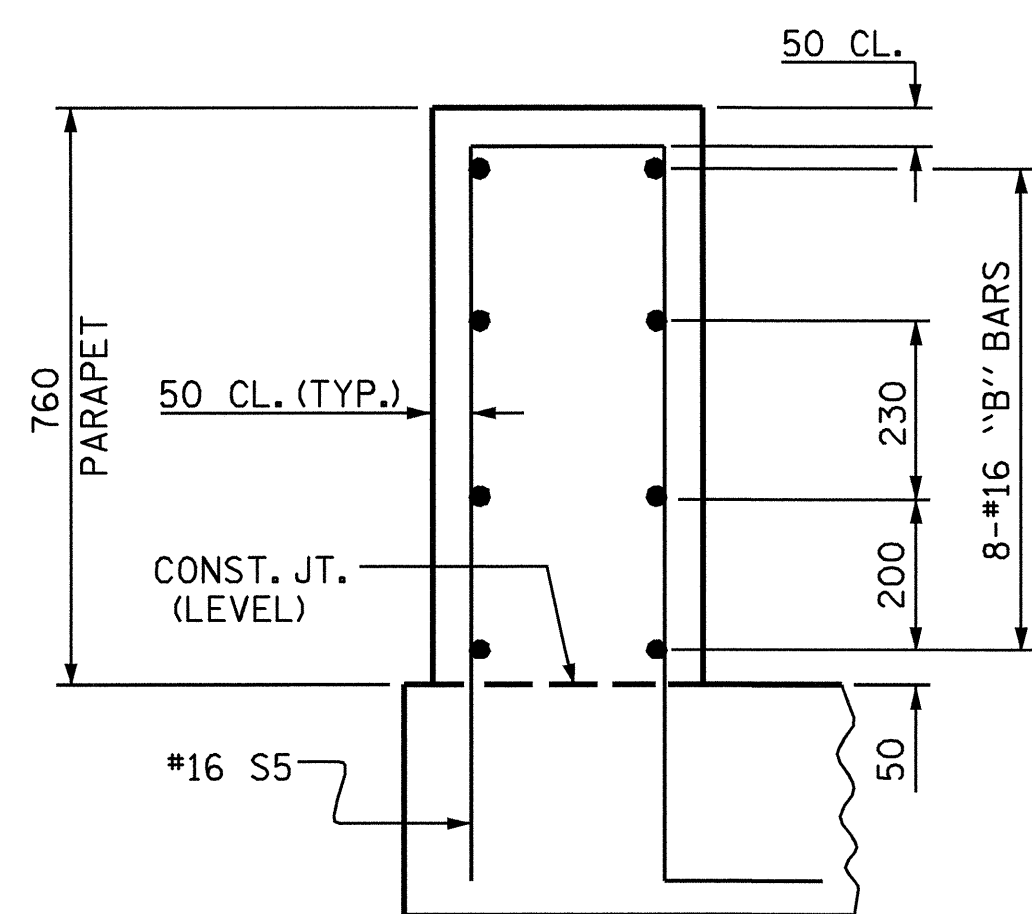
PLAN OF END POST



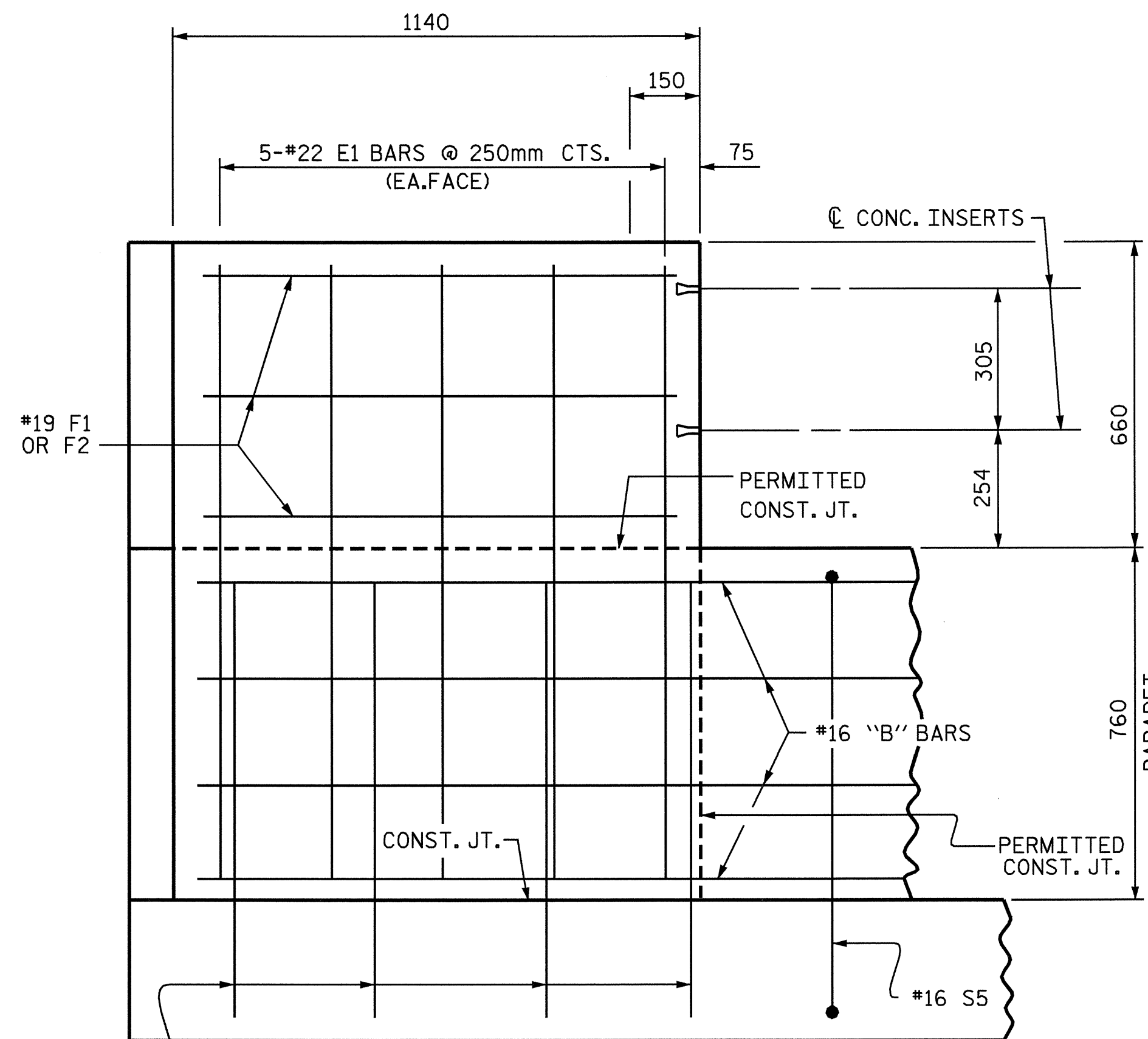
PLAN OF PARAPET



END VIEW



SECTION THRU RAIL



ELEVATION

| BAR TYPE                         |     | BILL OF MATERIAL FOR PARAPET AND END POSTS |      |        |         |  |
|----------------------------------|-----|--|------|--------|---------|--|
| BAR                              | NO. | SIZE                                       | TYPE | LENGTH | WEIGHT  |  |
| * B4                             | 48  | *16  | STR  | 13600  | 1013    |  |
| * B5                             | 24  | *16  | STR  | 16040  | 597     |  |
| * E1                             | 20  | *22  | STR  | 1320   | 80      |  |
| * F1                             | 6   | *19  | STR  | 1080   | 14      |  |
| * F2                             | 6   | *19  | STR  | 1040   | 14      |  |
| * S5                             | 402 | *16  | 1    | 2140   | 1335    |  |
| * S6                             | 16  | *16  | STR  | 920    | 23      |  |
| * EPOXY COATED REINFORCING STEEL |     |  |      | kg     | 3076    |  |
| CLASS "AA" CONCRETE              |     |  |      | CU. M. | 33.9    |  |
| 355mm x 760mm CONCRETE PARAPET   |     |  |      | METERS | 123.388 |  |

ALL BAR DIMENSIONS ARE OUT TO OUT.

NOTES

FOR DETAIL OF CONCRETE INSERT AND GUARDRAIL ANCHOR ASSEMBLY, SEE "RAIL POST SPACINGS AND END OF RAIL DETAIL" SHEETS.

CONCRETE PARAPET IN A CONTINUOUS UNIT SHALL NOT BE CAST UNTIL ALL SLAB CONCRETE IN THE UNIT HAS BEEN CAST AND HAS REACHED A MINIMUM COMPRESSIVE STRENGTH OF 20.7 MPa.

THE JOINT IN THE DECK AT END BENT 1 SHALL BE SAWED PRIOR TO THE CASTING OF CONCRETE PARAPET.

ALL REINFORCING STEEL IN CONCRETE PARAPET SHALL BE EPOXY COATED.

THE #16 S6 BARS SHALL BE INSTALLED USING AN ADHESIVE ANCHORING SYSTEM AFTER SAWING THE JOINT AT END BENT 1. FOR ADHESIVELY ANCHORED BOLTS OR DOWELS, SEE SPECIAL PROVISIONS. THE YIELD LOAD FOR THE #16 S6 BARS IS 82.7 kN. FIELD TESTING OF THE ADHESIVE BONDING SYSTEM IS NOT REQUIRED.

PROJECT NO. R-0977A  
CHEROKEE COUNTY  
 STATION: 41+19.524-LREV-

SHEET 3 OF 3



STATE OF NORTH CAROLINA  
 DEPARTMENT OF TRANSPORTATION  
 RALEIGH  
 SUPERSTRUCTURE  
 355mm X 760mm  
 CONCRETE PARAPET

| REVISIONS |     |       |     |     |       | SHEET NO.        |
|-----------|-----|-------|-----|-----|-------|------------------|
| NO.       | BY: | DATE: | NO. | BY: | DATE: | S-147            |
| 1         |     |       | 3   |     |       | TOTAL SHEETS 230 |
| 2         |     |       | 4   |     |       |                  |

DRAWN BY : B.N. BARODAWALA DATE : 4-23-04  
 CHECKED BY : MIKE ALLEN DATE : 11-8-04

PARAPET AND END POST FOR TWO BAR RAIL