

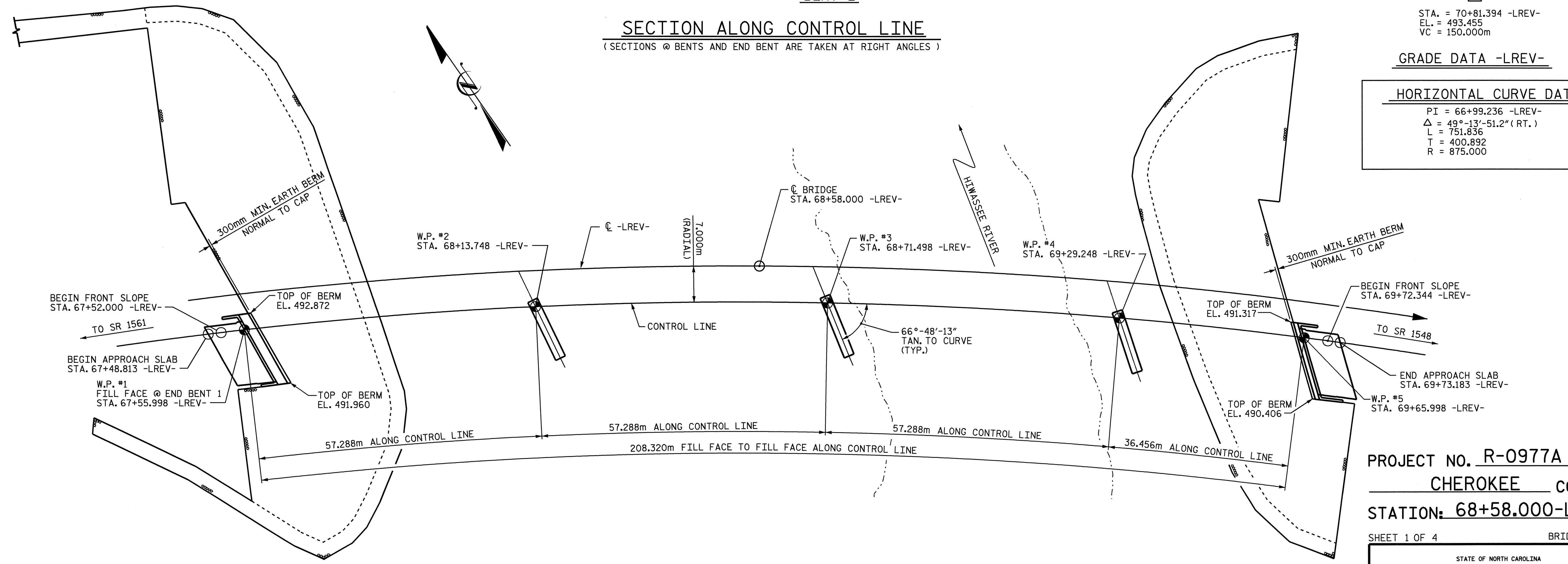
SECTION ALONG CONTROL LINE
(SECTIONS @ BENTS AND END BENT ARE TAKEN AT RIGHT ANGLES)

- 0.7593% +1.4391%
STA. = 70+81.394 -LREV-
EL. = 493.455
VC = 150.000m

GRADE DATA -LREV-

HORIZONTAL CURVE DATA

PI = 66+99.236 -LREV-
Δ = 49°-13'-51.2" (RT.)
L = 751.836
T = 400.892
R = 875.000

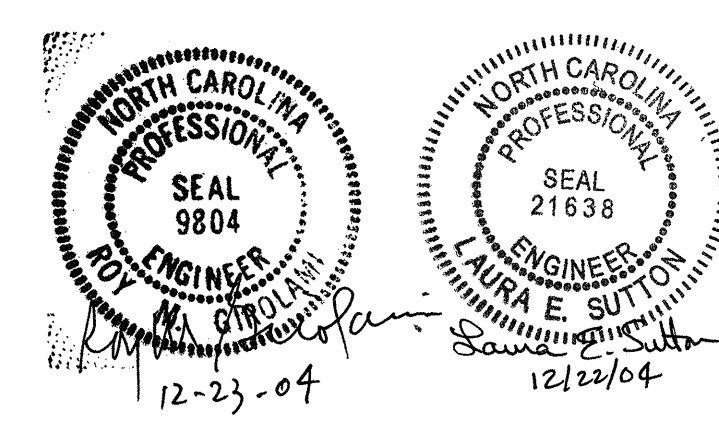


PLAN
PILES NOT SHOWN FOR CLARITY

PROJECT NO. R-0977A
CHEROKEE COUNTY
STATION: 68+58.000-LREV-
SHEET 1 OF 4 BRIDGE NO. 272

STATE OF NORTH CAROLINA
DEPARTMENT OF TRANSPORTATION
RALEIGH

**GENERAL DRAWING
FOR BRIDGE ON US 64
OVER THE HIWASSEE
RIVER BETWEEN SR 1548
AND SR 1561**



REVISIONS						SHEET NO.	
NO.	BY:	DATE:	NO.	BY:	DATE:	S-172	
1			3			TOTAL SHEETS	
2			4			230	

DRAWN BY : T.A. WALTER DATE : 12/9/04
CHECKED BY : L.E. SUTTON DATE : 12/17/04