

**NOTES**

FOR POT BEARINGS, SEE SPECIAL PROVISIONS.

AT ALL POINTS OF SUPPORT, NUTS FOR ANCHOR BOLTS SHALL BE TIGHTENED FINGER TIGHT AND GIVEN AN ADDITIONAL 1/4 TURN. THE THREAD OF THE NUT AND BOLT SHALL THEN BE BURRED WITH A SHARP POINTED TOOL.

WHEN WELDING THE SOLE PLATE TO THE GIRDER, USE TEMPERATURE INDICATING WAX PENS, OR OTHER SUITABLE MEANS, TO ENSURE THAT THE TEMPERATURE OF THE BEARING DOES NOT EXCEED 121°C. TEMPERATURES ABOVE THIS MAY DAMAGE THE TFE OR ELASTOMER.

AFTER BEARING ASSEMBLY IS IN PLACE AND ANCHOR BOLTS HAVE BEEN FINALLY POSITIONED. THEY SHALL BE GROUTED IN PLACE AS SHOWN.

THE CLOSURE PLATE, GROUT PIPE AND STANDARD PIPE FOR THIS ASSEMBLY NEED NOT BE GALVANIZED.

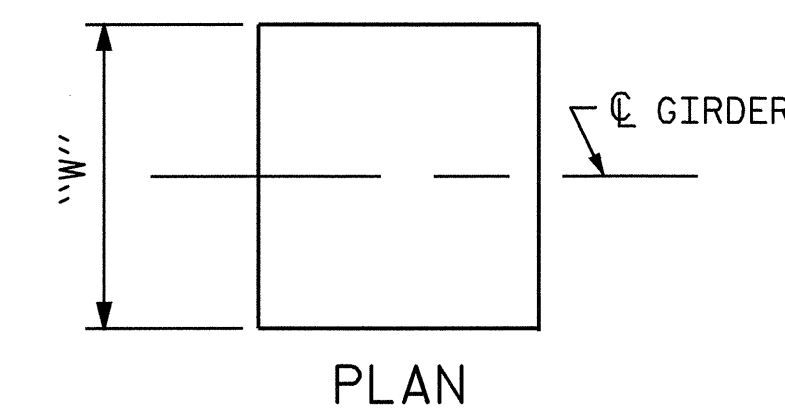
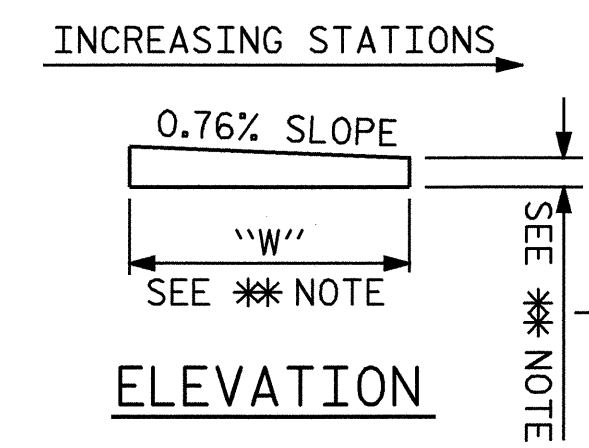
SOLE PLATES SHOULD BE WELDED TO BEAM FLANGES AND ANCHOR BOLTS SHOULD BE GROUTED BEFORE FALSEWORK IS PLACED.

ALL SURFACES OF BEARING PLATES SHALL BE SMOOTH AND STRAIGHT.

FOR THERMAL SPRAYED COATINGS (METALLIZATION), SEE SPECIAL PROVISIONS.

THE CONTRACTOR MAY SUBSTITUTE DISC BEARINGS FOR THE POT BEARINGS SHOWN. FOR OPTIONAL DISC BEARINGS, SEE SPECIAL PROVISIONS.

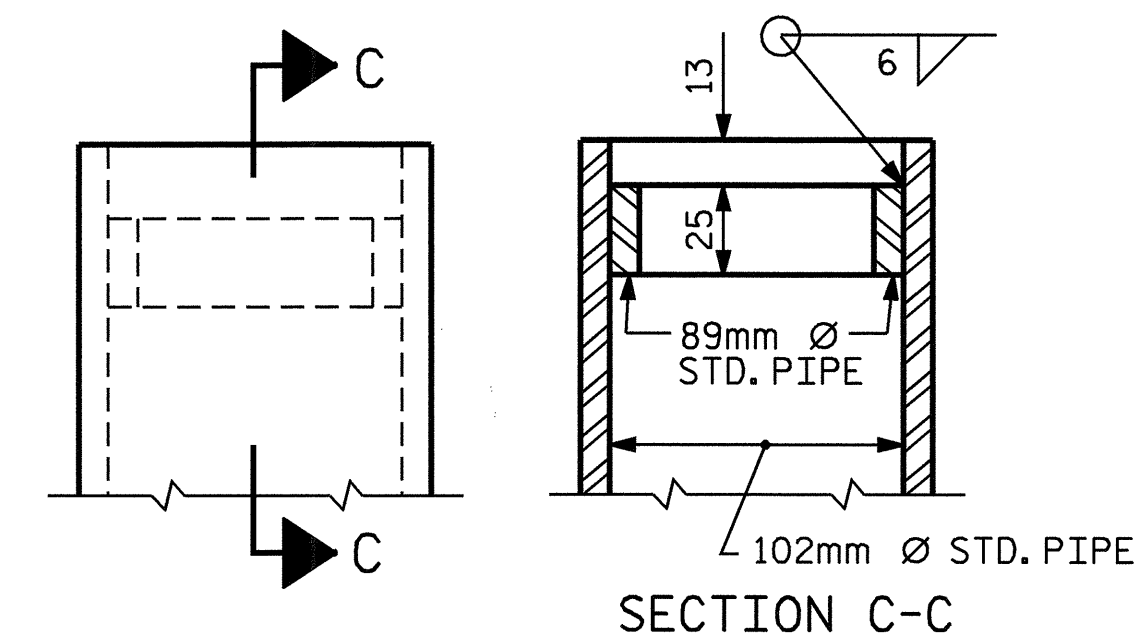
THE CONTRACTOR SHALL ADJUST THE GIRDER BUILDPUPS AS NECESSARY TO INCORPORATE A MAXIMUM PERMISSIBLE VARIATION IN POT BEARING DEPTH OF 13mm, SEE SPECIAL PROVISION FOR POT BEARINGS.



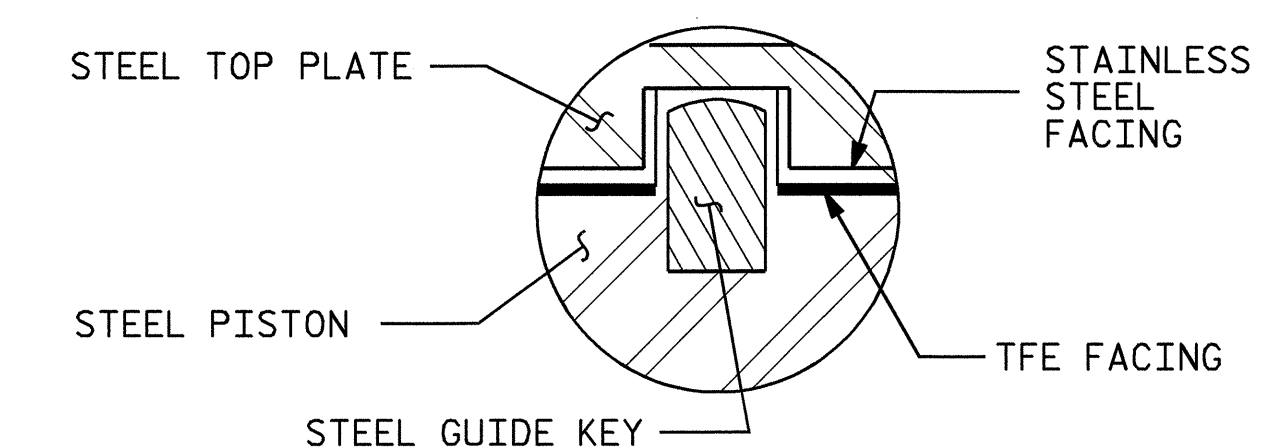
\*\* NOTE: DIMENSIONS "W" AND "T" ARE TO BE DETERMINED BY THE MANUFACTURER.

**SOLE PLATE DETAILS**

GUIDE KEY SETTING ANGLES		
GIRDER	POT BEARING @ BENT 1	POT BEARING @ BENT 3
#1	64°-55'-42"	68°-42'-35"
#2	64°-49'-59"	68°-36'-52"
#3	64°-44'-12"	68°-31'-06"
#4	64°-38'-23"	68°-25'-17"



**DETAIL "A"**



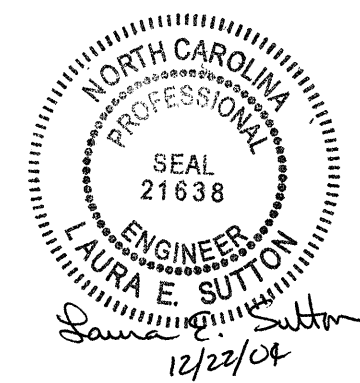
**GUIDE KEY DETAIL**

PROJECT NO. R-0977A  
CHEROKEE COUNTY  
 STATION: 68+58.000-LREV-

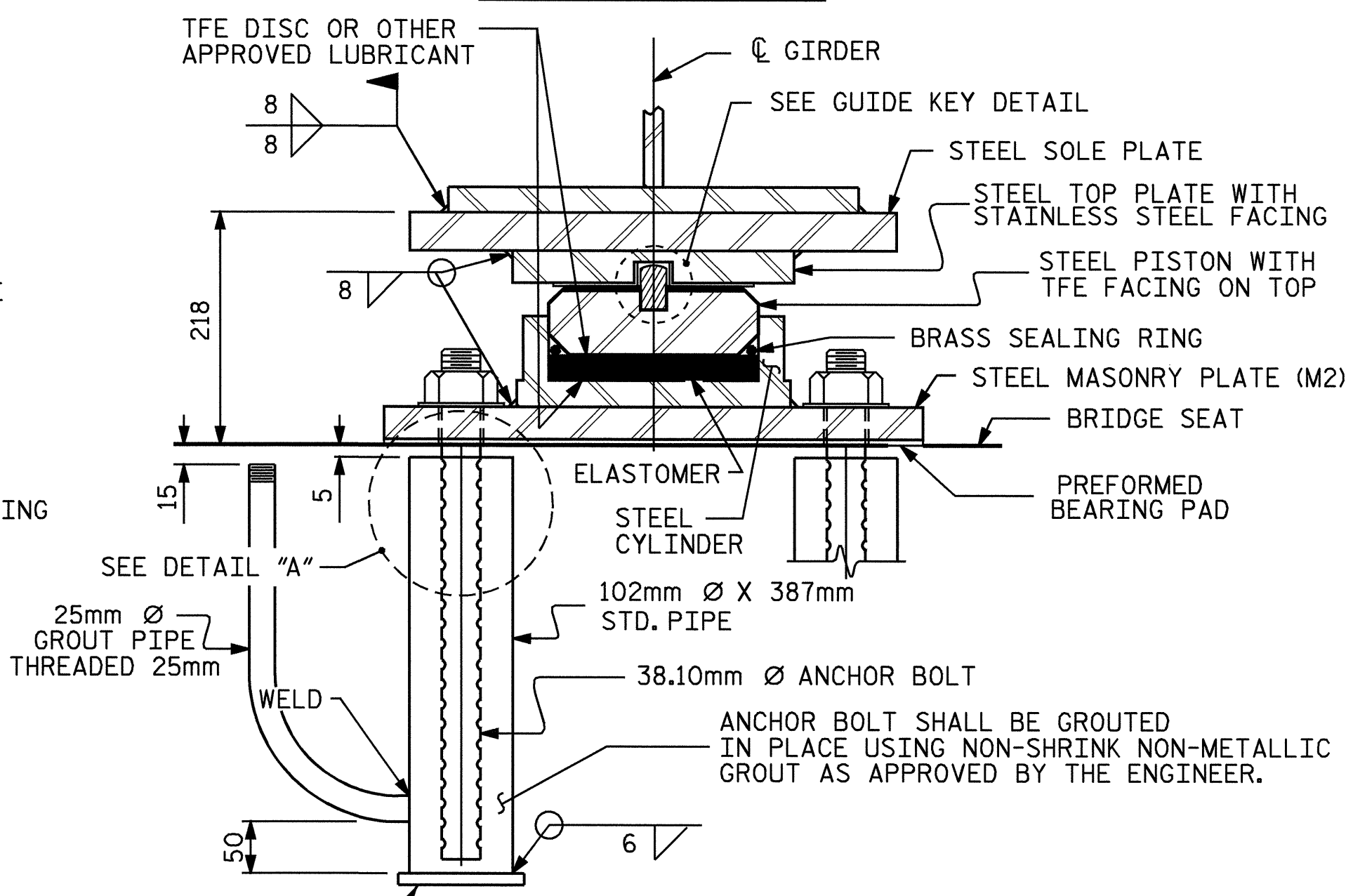
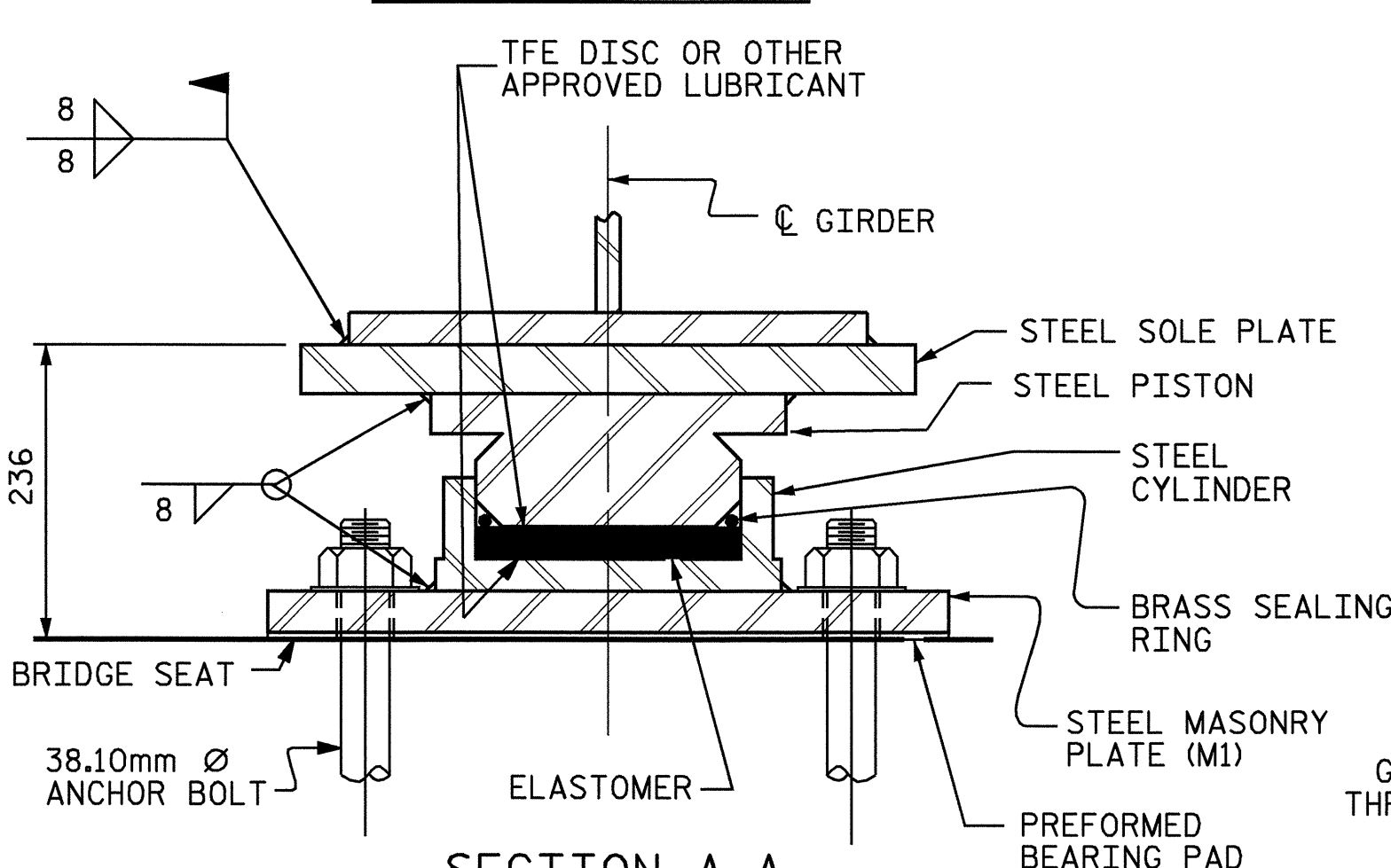
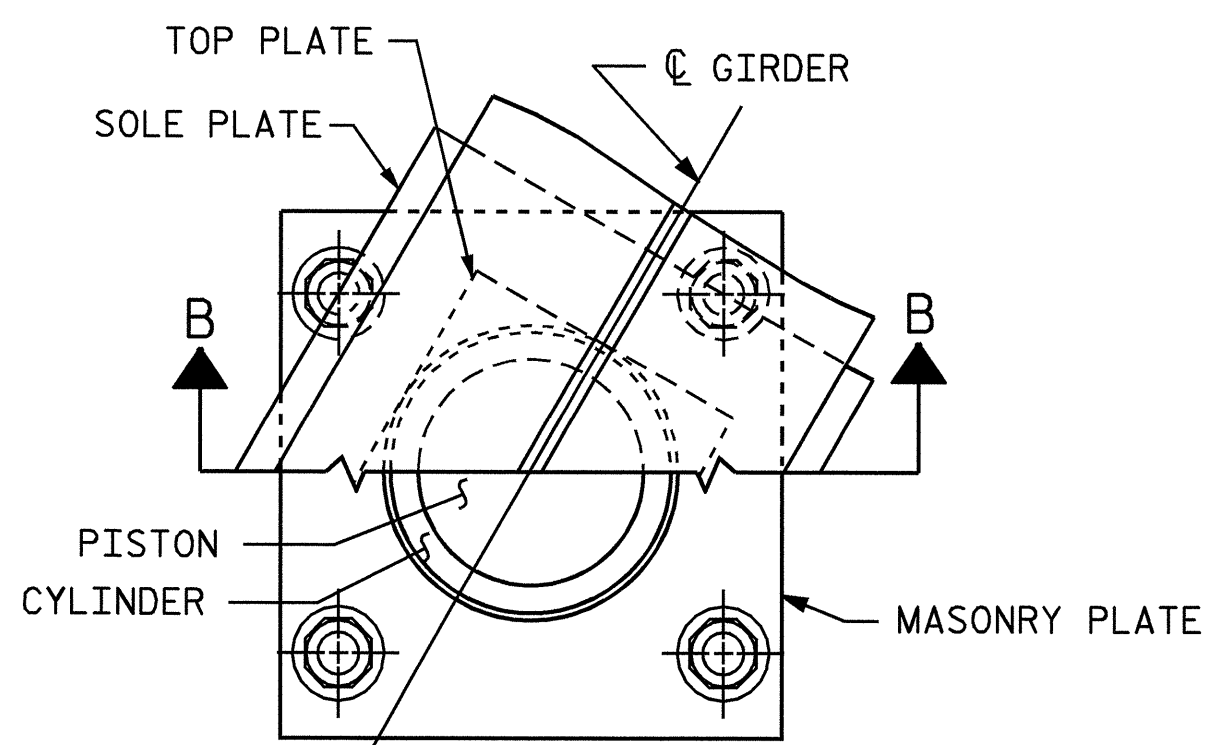
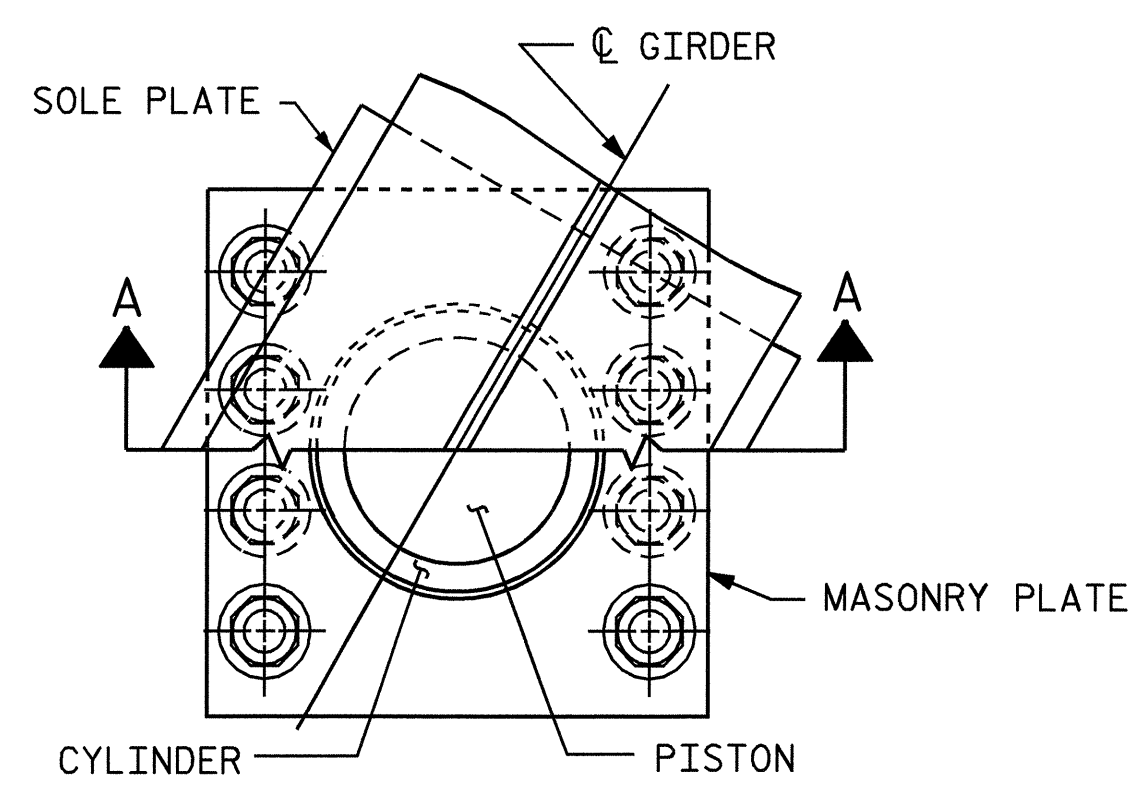
SHEET 1 OF 2

STATE OF NORTH CAROLINA  
 DEPARTMENT OF TRANSPORTATION  
 RALEIGH  
 STANDARD  
 POT BEARING  
 DETAILS

REVISIONS						SHEET NO.
NO.	BY:	DATE:	NO.	BY:	DATE:	S-194
1			3			TOTAL SHEETS 230
2			4			



STR. #5 PB1SM.STD



**POT BEARING DETAILS**

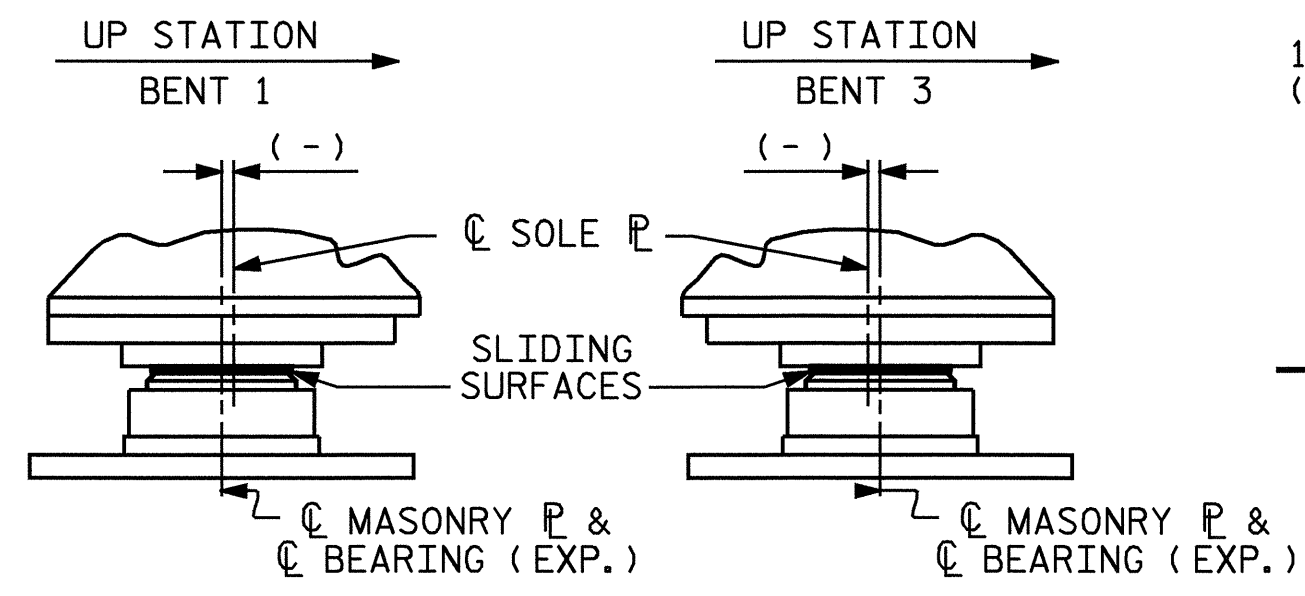
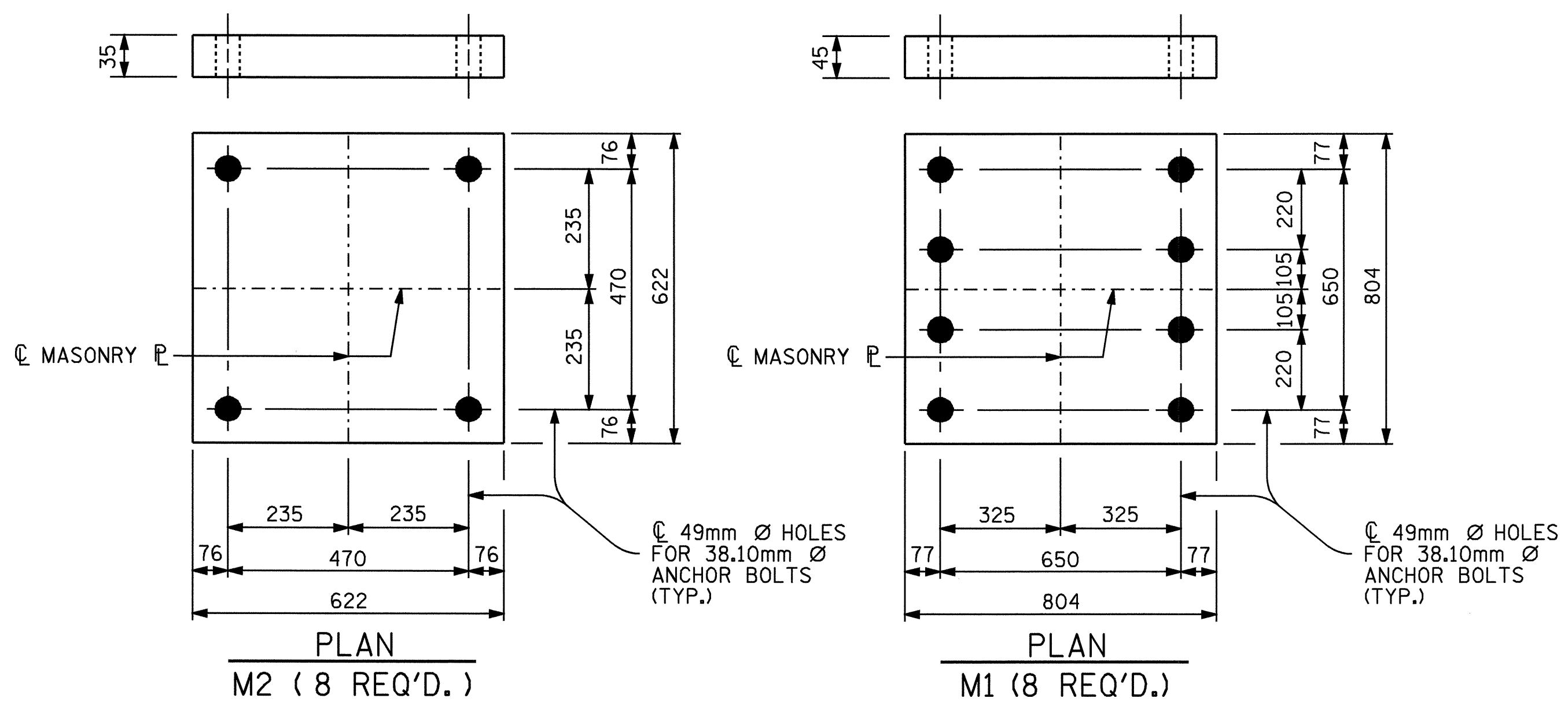


TABLE FOR PLATE SETTING DATA (EXPANSION OR FIXED POT BEARINGS)				
TEMPERATURE AT TIME OF SETTING	0° C	16° C	32° C	*
BENT 1	-11	0	11	-2
BENT 3	-11	0	11	-10

\*CORRECTION FOR END ROTATION DUE TO WEIGHT OF SLAB AND COMPOSITE DEAD LOAD.

**TEMPERATURE SETTING DETAIL**

TABLE FOR LOADS AND MOVEMENTS						
BEARING	LOCATION	VERTICAL LOAD (KN)			LATERAL LOAD (KN)	TOTAL MOVEMENT (mm)
		DEAD	LIVE	TOTAL		
PB2 (EXP.)	BENT 1	1809	671	2480	462	48
PB1 (FIX.)	BENT 2	1610	575	2185	1155	0
PB2 (EXP.)	BENT 3	1470	550	2020	486	48



ASSEMBLED BY: B.N.BARODAWALA DATE: 11-10-04  
 CHECKED BY: MIKE ALLEN DATE: 12-04  
 DRAWN BY: RWW 8/99 REV. 10/17/00 RWW/LES  
 CHECKED BY: LES 8/99 REV. 7/10/01 LES/RWW  
 REV. 5/7/03 RWW/JTE