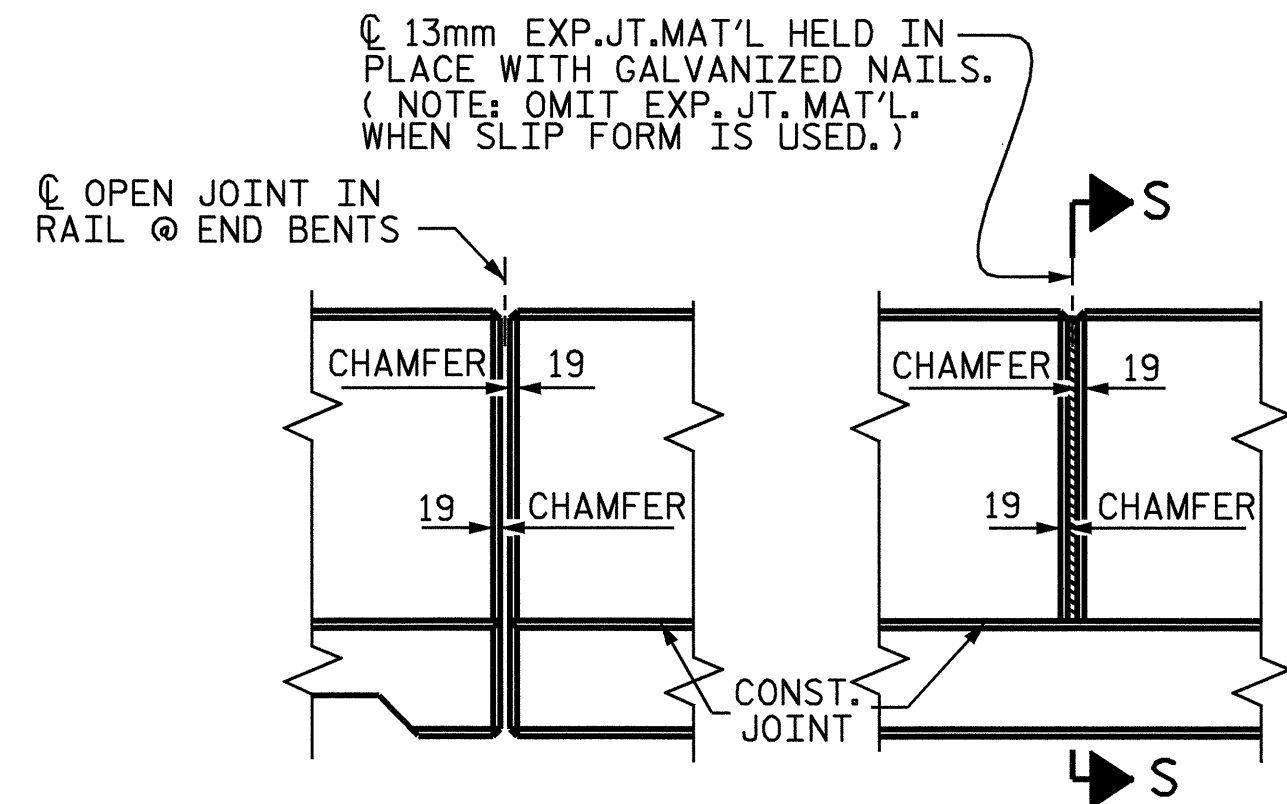
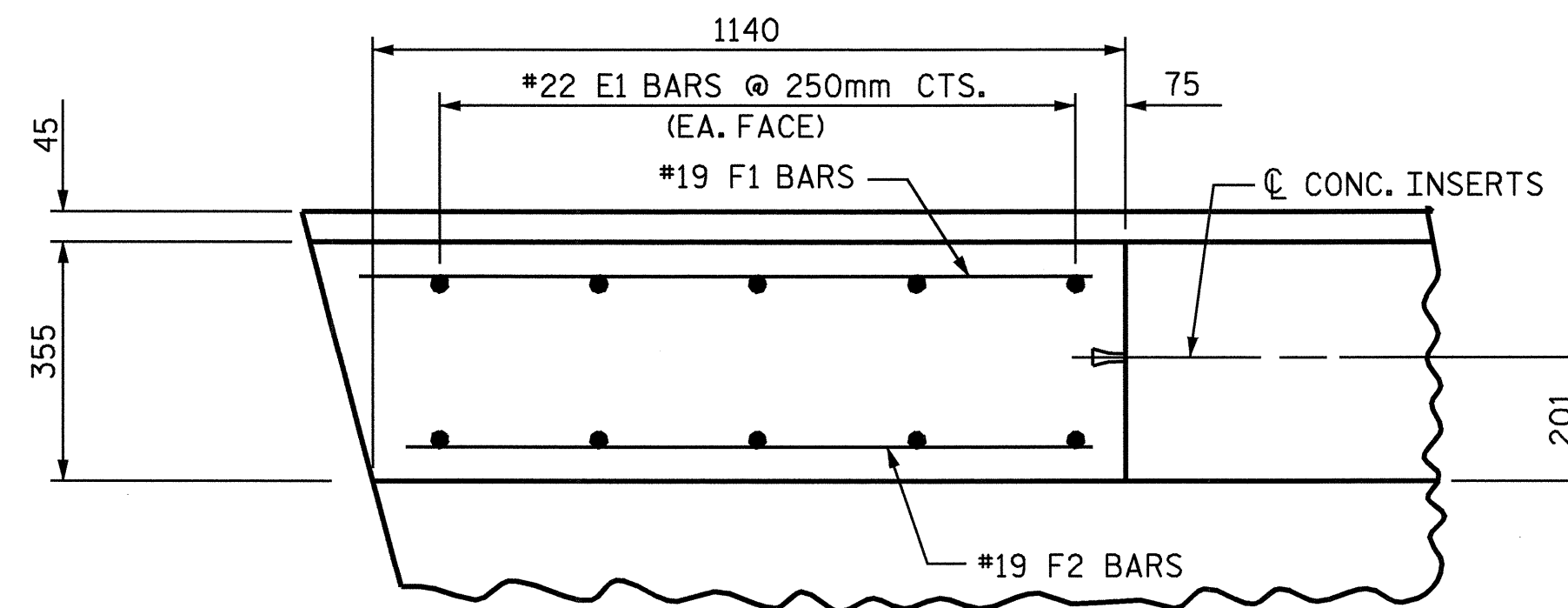


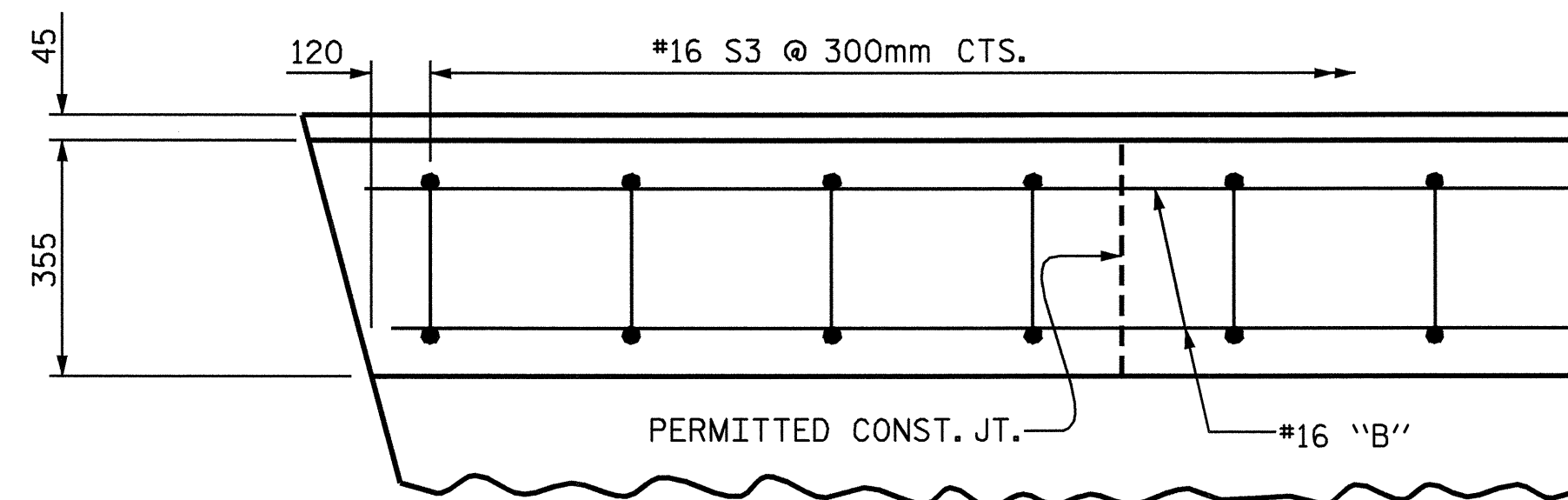
SECTION S-S
AT DAM IN OPEN JOINT
(THIS IS TO BE USED ONLY
WHEN SLIP FORM IS USED)



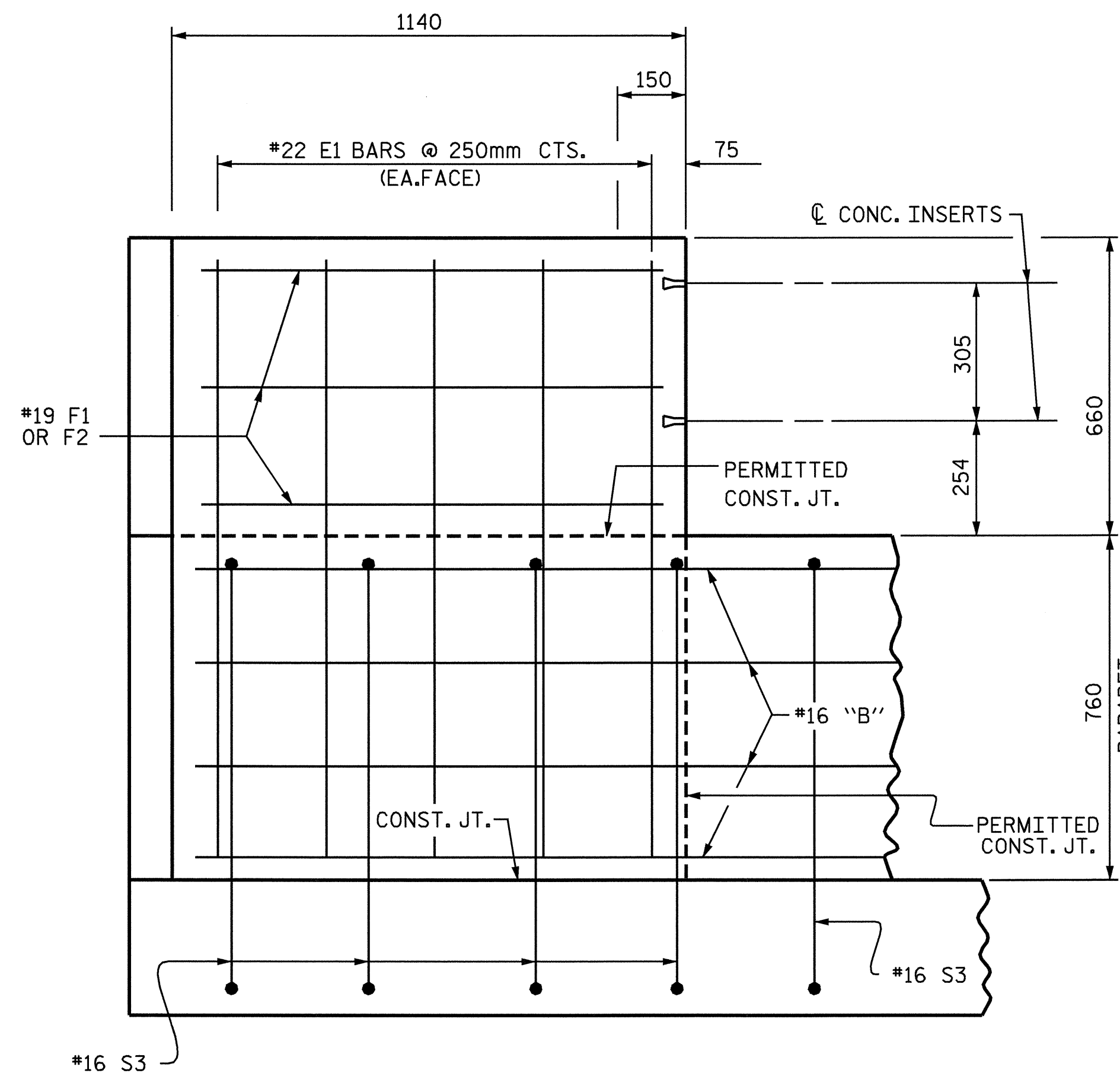
ELEVATION AT EXPANSION JOINTS
PARAPET DETAILS



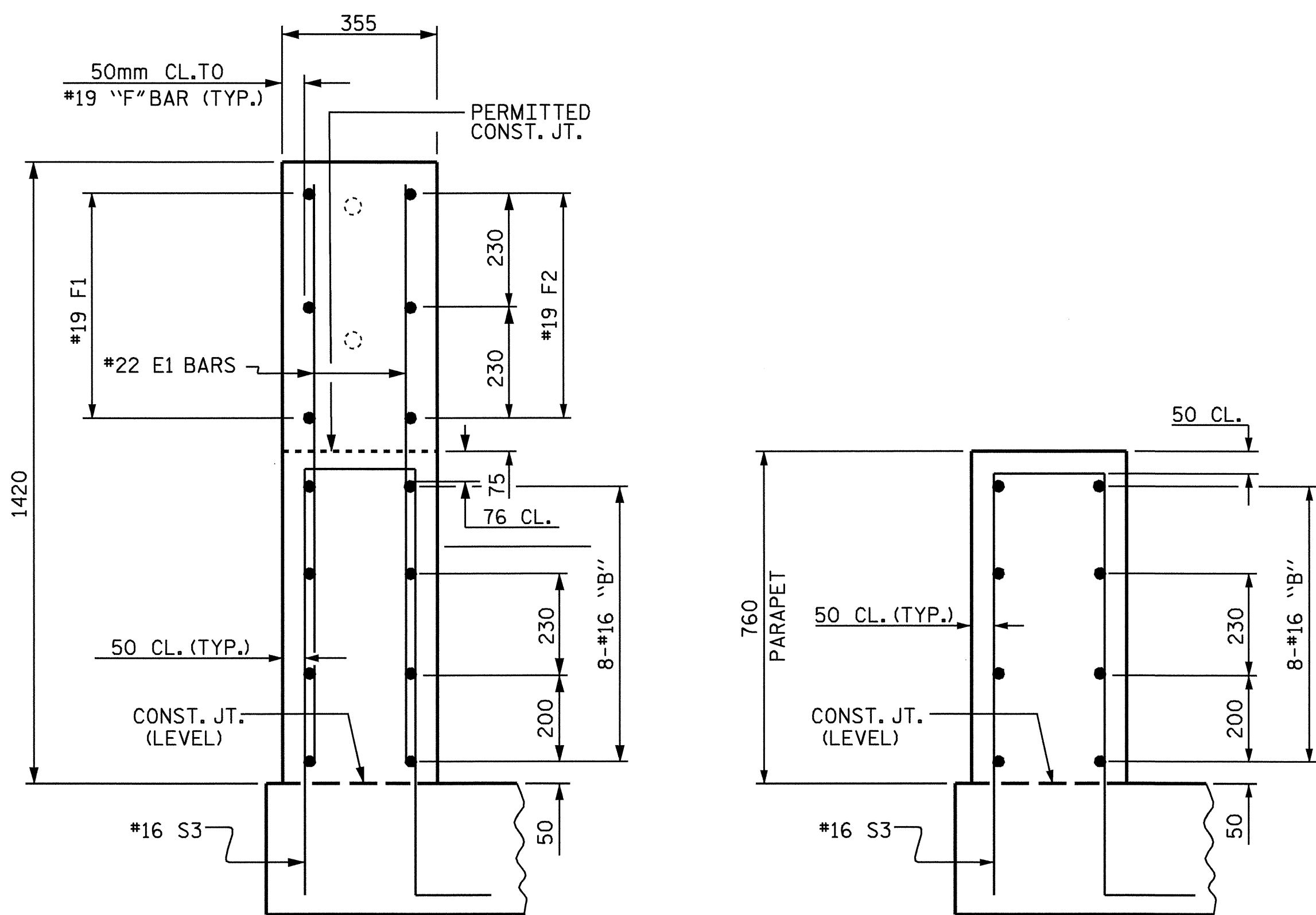
PLAN OF END POST



PLAN OF PARAPET



ELEVATION



END VIEW

SECTION THRU RAIL

PARAPET AND END POST FOR TWO BAR RAIL

BAR TYPE	BILL OF MATERIAL FOR PARAPET AND END POSTS					
	BAR NO.	SIZE	TYPE	LENGTH	WEIGHT	
* B6	32	#16	STR	15220	756	
* B7	64	#16	STR	15360	1526	
* B8	24	#16	STR	12920	481	
* E1	20	#22	STR	1320	80	
* F1	6	#19	STR	1080	14	
* F2	6	#19	STR	1040	14	
* S3	691	#16	1	2140	2295	
* EPOXY COATED REINFORCING STEEL				kg	5166	
CLASS "AA" CONCRETE				CU. M.	56.6	
355mm x 760mm CONCRETE PARAPET				METERS	207.656	

NOTES

FOR DETAIL OF CONCRETE INSERT AND GUARDRAIL ANCHOR ASSEMBLY, SEE "RAIL POST SPACINGS AND END OF RAIL DETAIL" SHEETS.

CONCRETE PARAPET IN A CONTINUOUS UNIT SHALL NOT BE CAST UNTIL ALL SLAB CONCRETE IN THE UNIT HAS BEEN CAST AND HAS REACHED A MINIMUM COMPRESSIVE STRENGTH OF 20.7 MPa.

ALL REINFORCING STEEL IN CONCRETE PARAPETS SHALL BE EPOXY COATED.

GROOVED CONTRACTION JOINTS, 12mm IN DEPTH, SHALL BE TOOLED IN ALL EXPOSED FACES OF THE PARAPET IN ACCORDANCE WITH ARTICLE 825-10(B) OF THE STANDARD SPECIFICATIONS. THE CONTRACTION JOINTS SHALL BE LOCATED AT A SPACING OF 8FT. TO 2.4m TO 3.5m BETWEEN EXPANSION JOINTS. NO CONTRACTION JOINTS WILL BE REQUIRED FOR SEGMENTS LESS THAN 3.5 METERS IN LENGTH.

PROJECT NO. R-0977A
CHEROKEE COUNTY
 STATION: 68+58.000-LREV-

SHEET 3 OF 3

STATE OF NORTH CAROLINA
 DEPARTMENT OF TRANSPORTATION
 RALEIGH

SUPERSTRUCTURE
 355mm X 760mm
 CONCRETE PARAPET

REVISIONS						SHEET NO.
NO.	BY:	DATE:	NO.	BY:	DATE:	S-202
1			3			TOTAL SHEETS 230
2			4			



ASSEMBLED BY : B.N.BARODAWALA DATE : 4-12-04
 CHECKED BY : MIKE ALLEN DATE : 10-21-04