

NOTES

FOR MODULAR EXPANSION JOINT SEALS, SEE SPECIAL PROVISIONS.

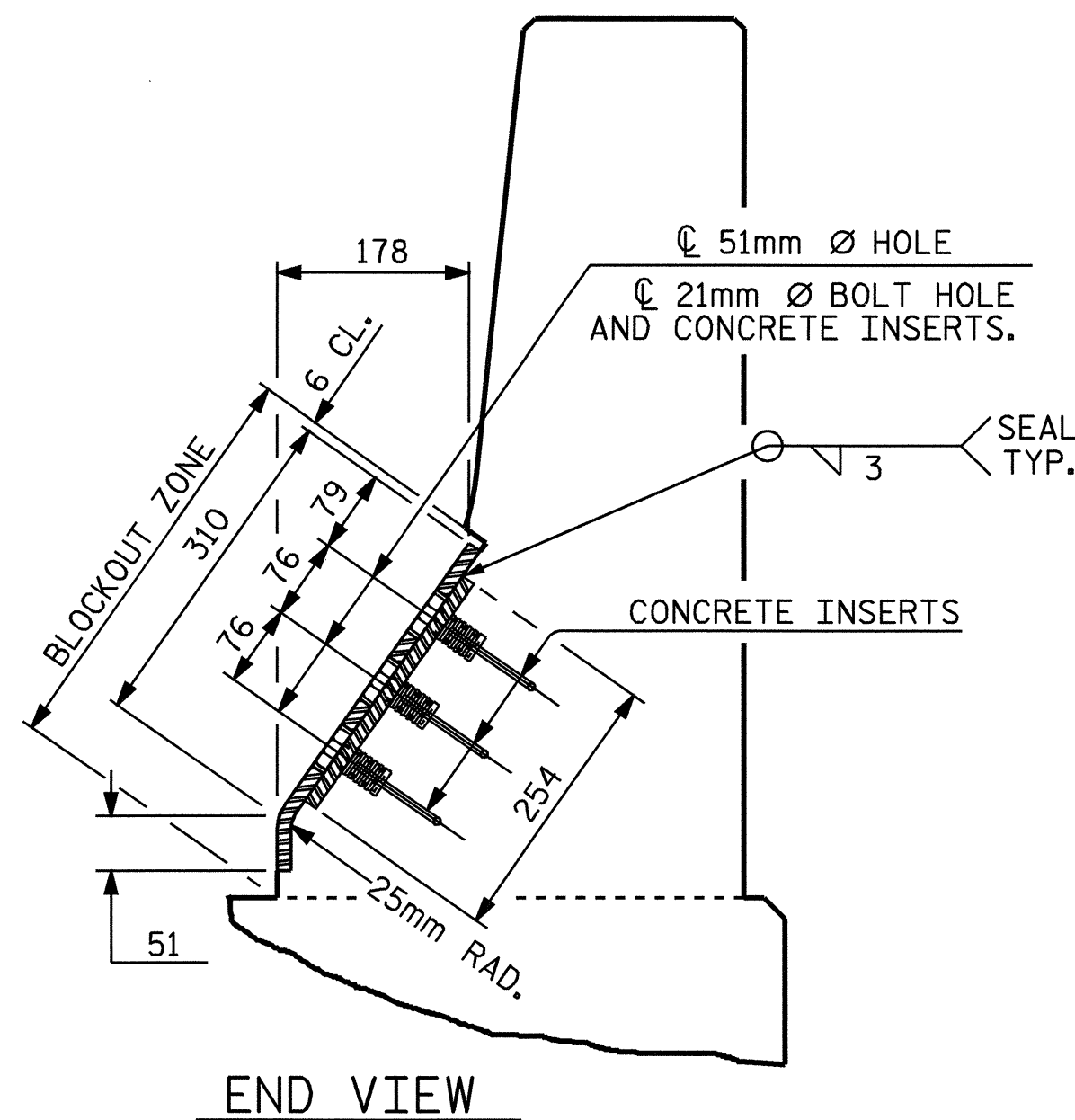
THE STEEL PLATES SHALL CONFORM TO AASHTO M270 GRADE 250 OR APPROVED EQUAL AND BE PAINTED IN ACCORDANCE WITH THE STANDARD SPECIFICATIONS. AT THE CONTRACTOR'S OPTION, THE PLATES MAY BE METALLIZED AFTER FABRICATION TO A MINIMUM THICKNESS OF 0.150mm. SEE SPECIAL PROVISIONS FOR THERMAL SPRAYED COATINGS (METALLIZATION).

THE 19.05mm Ø HEX HEAD BOLTS SHALL CONFORM TO ASTM F593 ALLOY 304 STAINLESS STEEL.

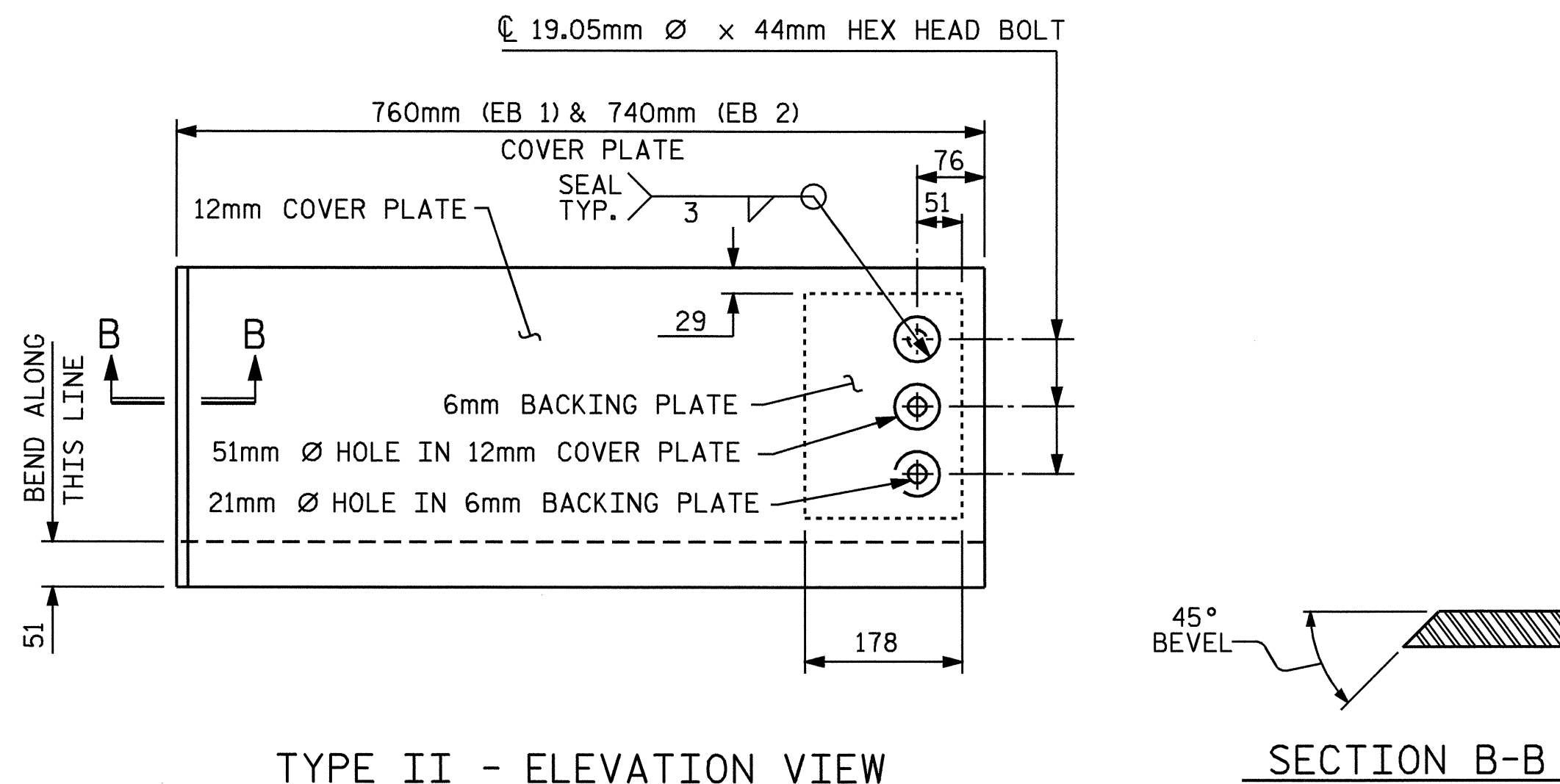
THE 19.05mm CONCRETE INSERTS SHALL BE CLOSED-END FERRULES WITH LOOPED WIRE STRUTS ATTACHED TO THEM. THE INSERTS SHALL CONFORM TO AASHTO M169, GRADE 12L14 AND SHALL HAVE A TENSILE WORKING LOAD CAPACITY OF 13.3 kN.

NO SEPARATE PAYMENT WILL BE MADE FOR FURNISHING AND INSTALLING THE COVER PLATE. THE ENTIRE COST OF THIS WORK SHALL BE INCLUDED IN THE LUMP SUM PRICE FOR "MODULAR EXPANSION JOINT SEALS."

	SKREW ANGLE (TAN. TO CURVE)	TOTAL MOVEMENT ALONG C ROADWAY
END BENT #1	66°-46'-07"	96mm
END BENT #2	66°-50'-19"	79mm



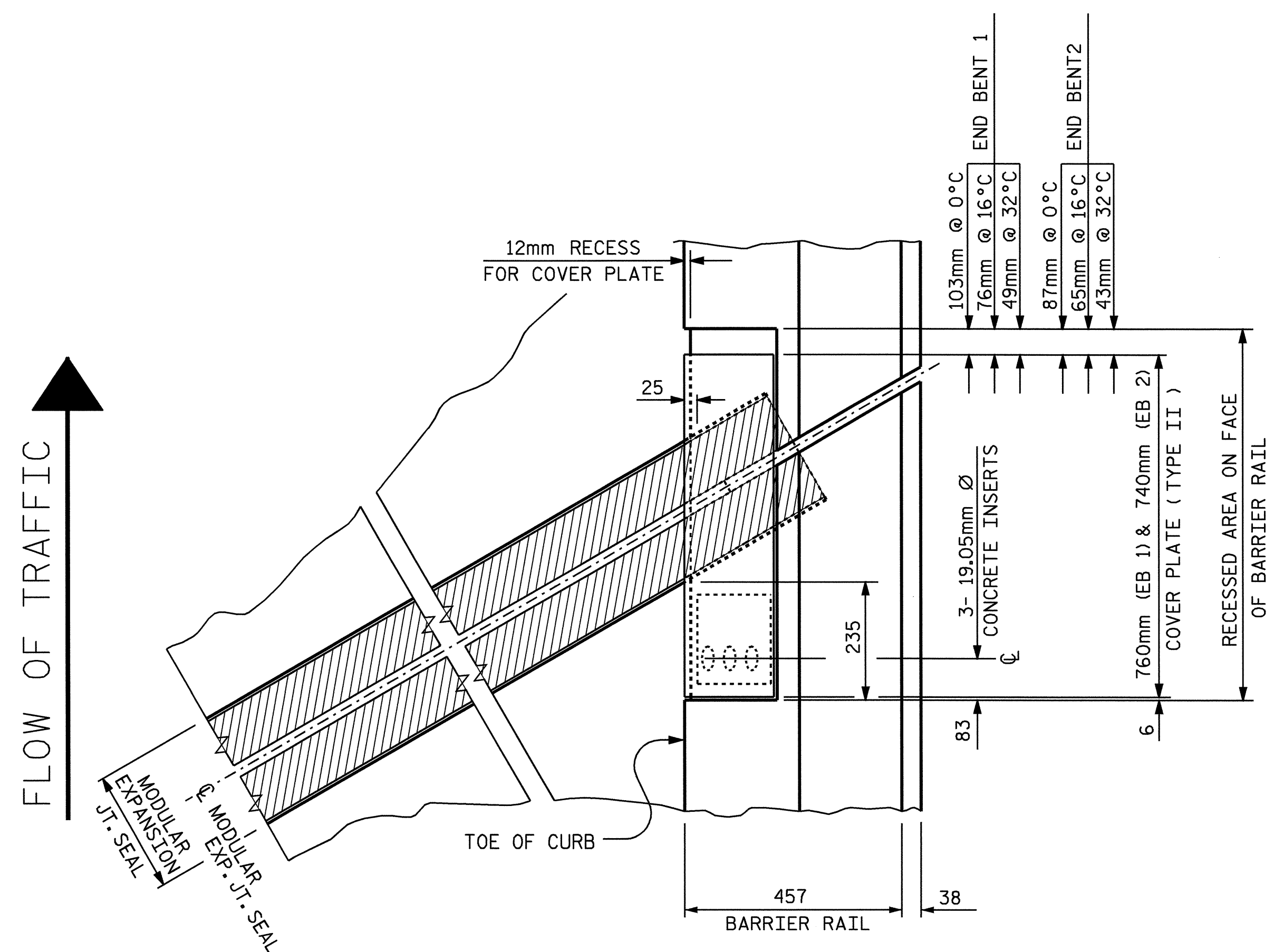
END VIEW



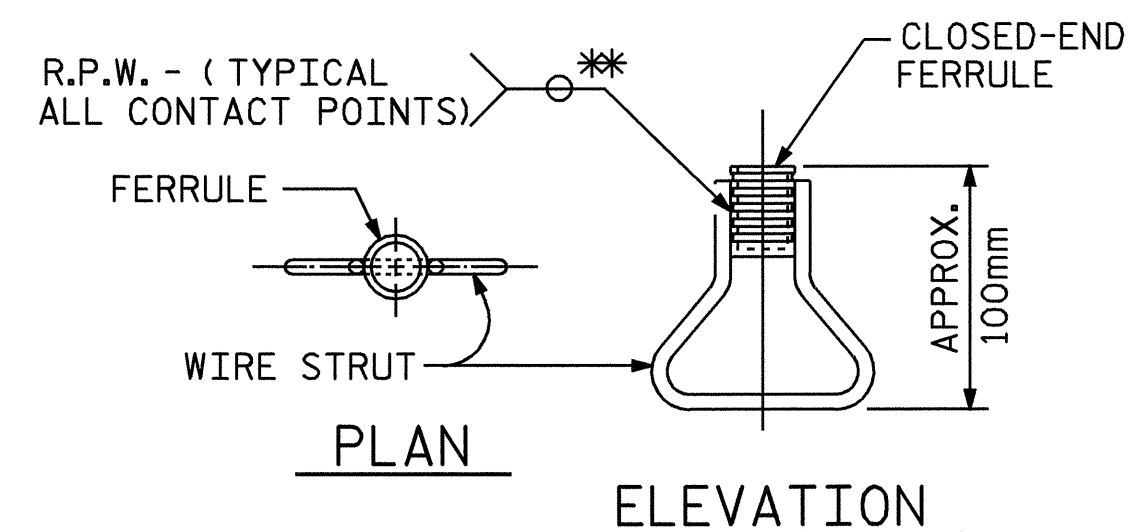
TYPE II - ELEVATION VIEW

SECTION B-B

COVER PLATE DETAILS

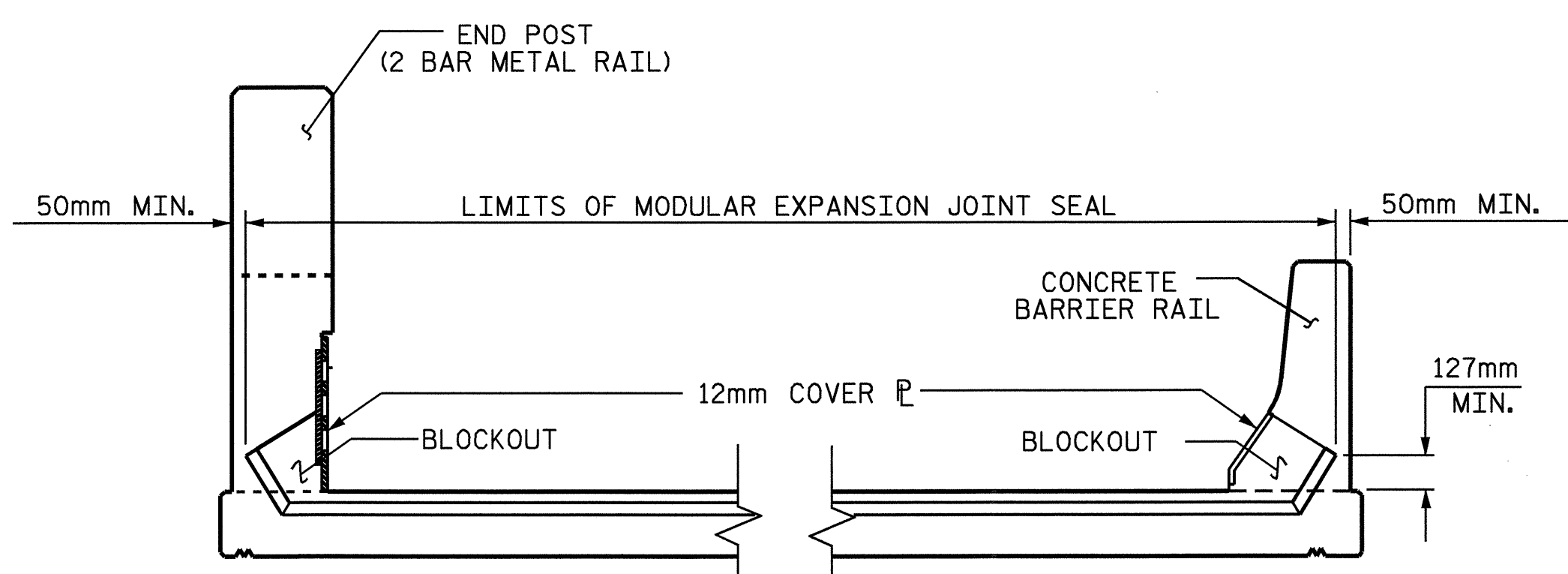


PLAN OF MODULAR EXPANSION JOINT SEAL - RIGHT SIDE



CONCRETE INSERT

* EACH WELDED ATTACHMENT OF WIRE TO FERRULE SHALL DEVELOP THE TENSILE STRENGTH OF THE WIRE.



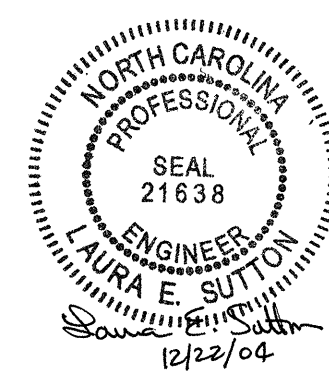
SKETCH SHOWING LIMITS OF MODULAR EXPANSION JOINT SEAL-BARRIER RAIL

PROJECT NO. R-0977A
CHEROKEE COUNTY
 STATION: 68+58.000-LREV-

SHEET 2 OF 2

STATE OF NORTH CAROLINA
 DEPARTMENT OF TRANSPORTATION
 RALEIGH

MODULAR EXPANSION JOINT SEAL DETAILS FOR BARRIER RAIL



REVISIONS						SHEET NO.
NO.	BY:	DATE:	NO.	BY:	DATE:	S-207
1			3			TOTAL SHEETS 230
2			4			

ASSEMBLED BY : B.N.BARODAWAL DATE : 9-1-04
 CHECKED BY : MIKE ALLEN DATE : 10-21-04