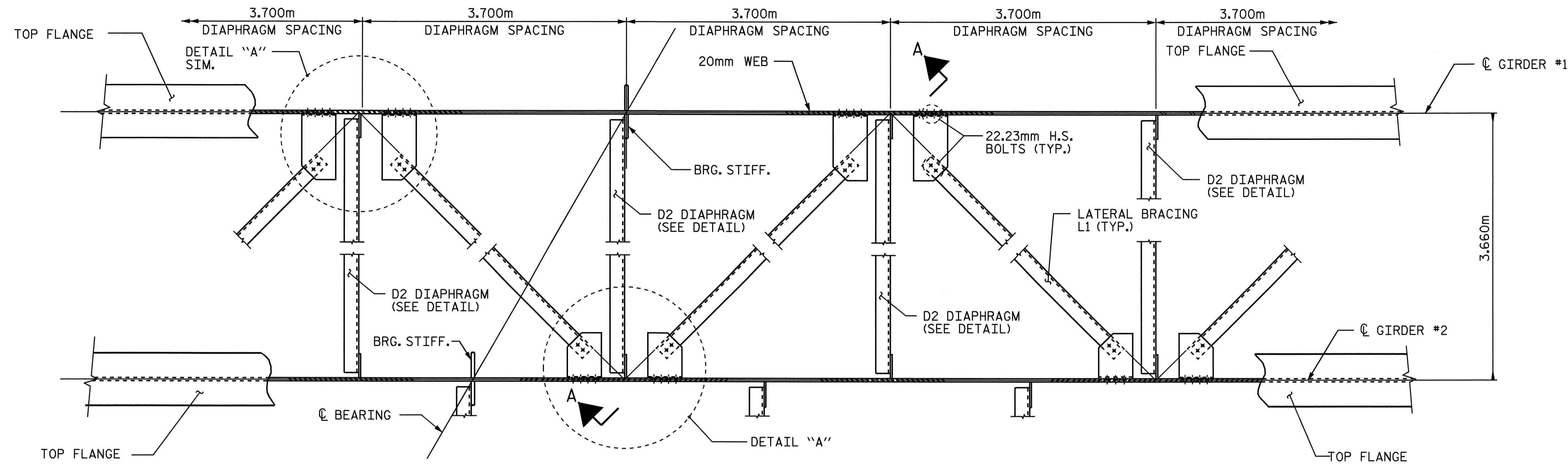


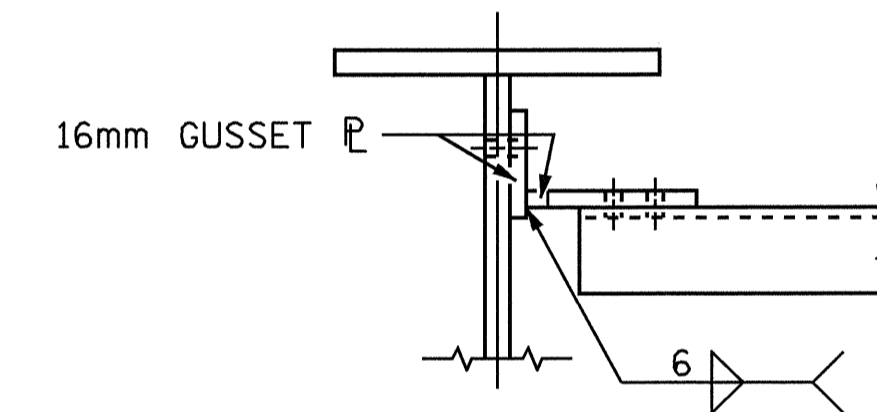
**NOTES**

THE TOP FLANGE LATERAL BRACING DETAILED IS PROVIDED TO ASSIST IN LIMITING GIRDER DISPLACEMENT DUE TO WIND FORCES DURING ERECTION. IT SHALL BE INSTALLED IMMEDIATELY AFTER ERECTION OF EACH PAIR OF GIRDER SECTIONS AT THE BENTS. THE DEPARTMENT ASSUMES NO LIABILITY IN THE ERECTION OR STABILIZATION OF THE GIRDERS.

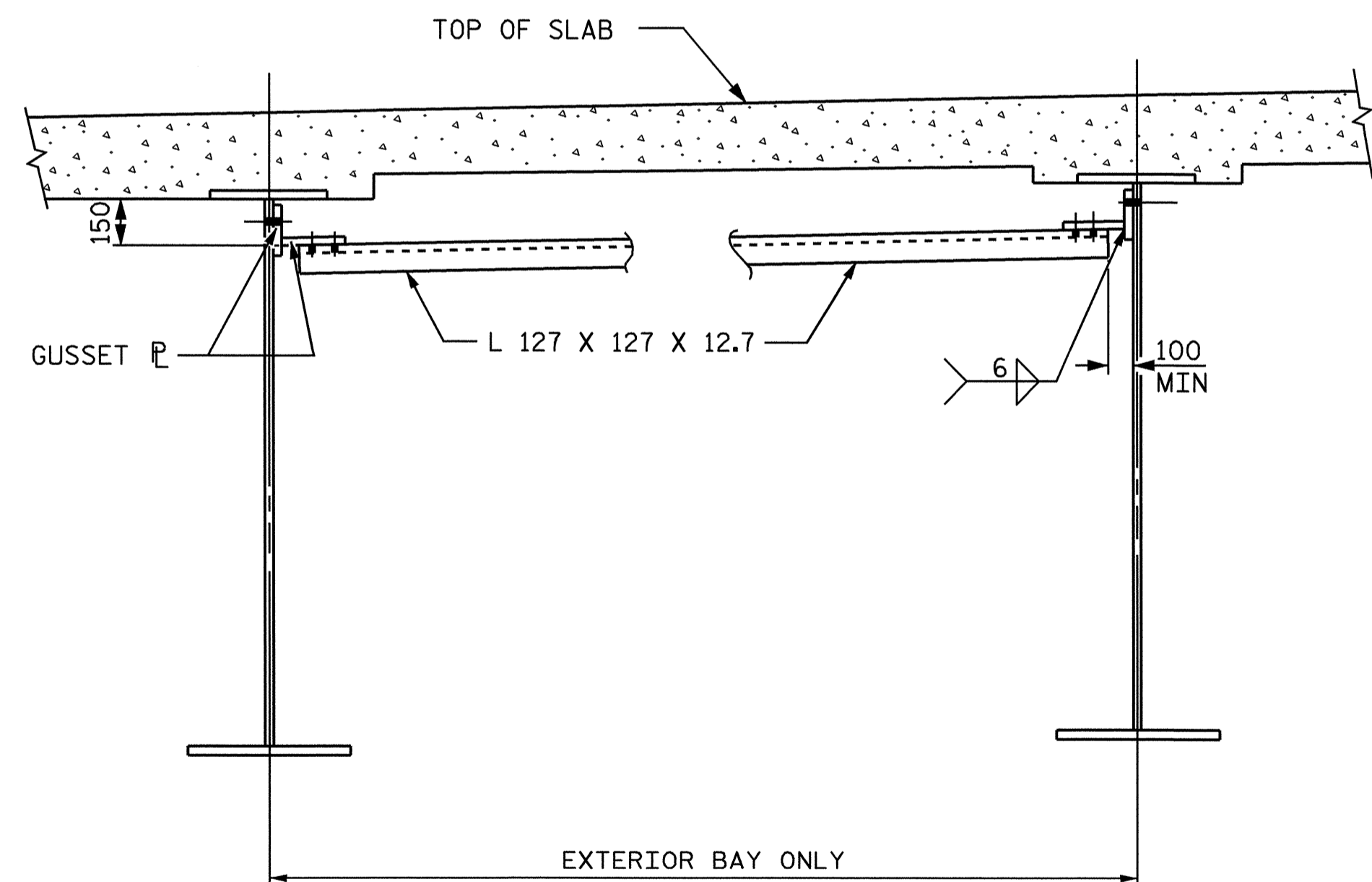


**PART PLAN - TOP FLANGE LATERAL BRACING L1**

GIRDER #1 AND GIRDER #2 SHOWN, GIRDER #3 AND GIRDER #4 SIMILAR.  
ALL GUSSET P'S AND CONNECTOR P'S ARE 16mm THICK.

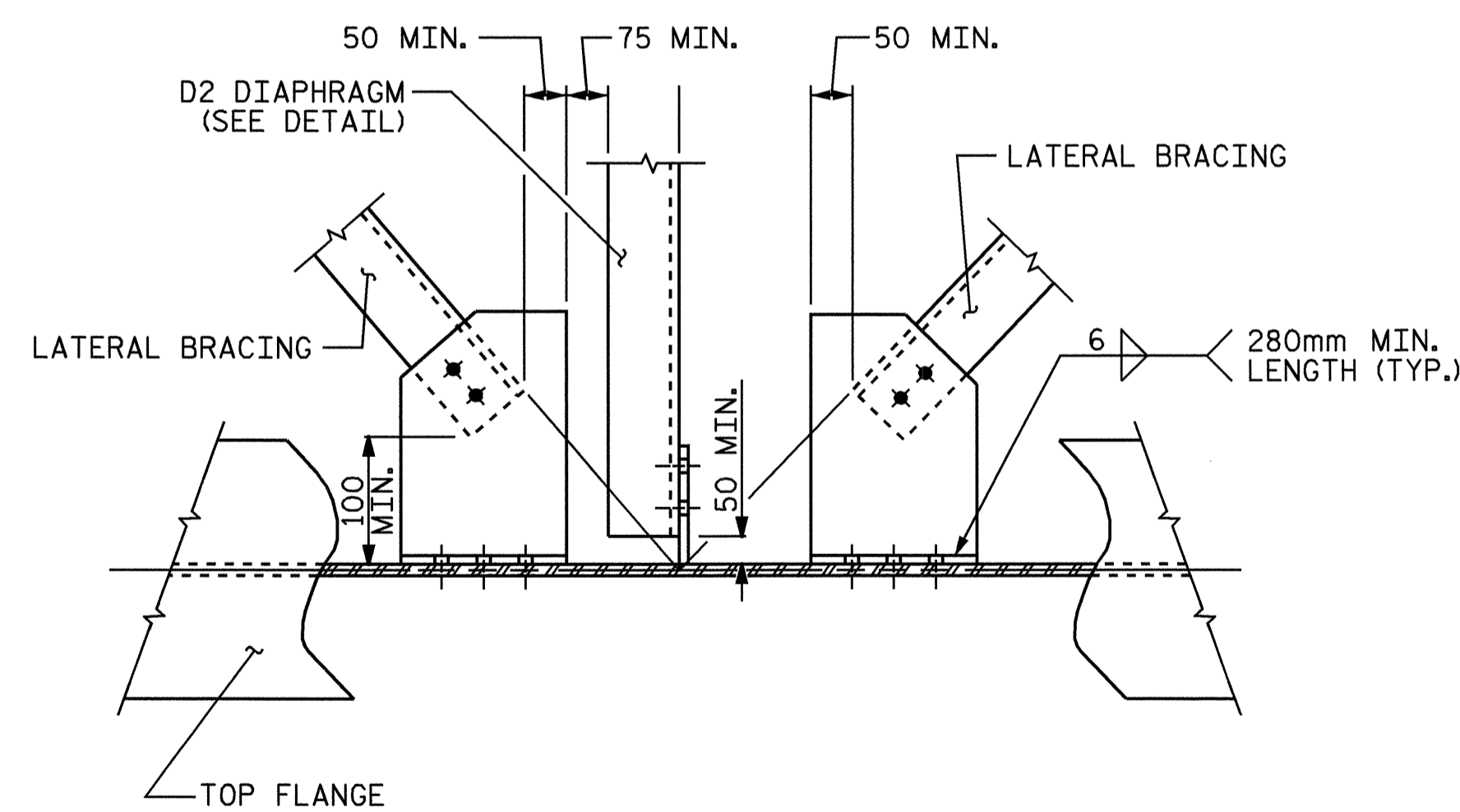


**SECTION THRU CONNECTION**



**SECTION A-A**

(LATERAL BRACING AT TOP FLANGE)



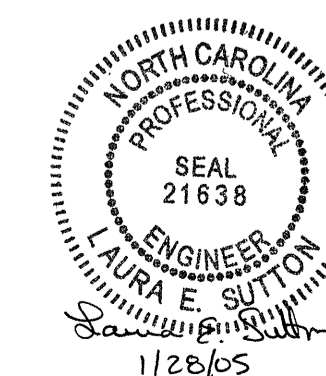
**DETAIL "A"**

L1 LATERAL BRACING AT TOP FLANGE

PROJECT NO. R-0977A  
CHEROKEE COUNTY  
STATION: 16+02.300 -LC1B-

SHEET 4 OF 7

STATE OF NORTH CAROLINA  
DEPARTMENT OF TRANSPORTATION  
RALEIGH  
SUPERSTRUCTURE  
STRUCTURAL STEEL  
DETAILS



DRAWN BY : M.A. ALLEN DATE : 11-04  
CHECKED BY : L.E. SUTTON DATE : 12-04

28-JAN-2005 16:03  
W:\SquadL\R0977a\str\scallaway\R0977A.sd.SS.01.dgn  
lsutton

REVISIONS						SHEET NO.
NO.	BY:	DATE:	NO.	BY:	DATE:	S-16
1			3			TOTAL SHEETS
2			4			230

STR. #1