

**NOTES**

THE COST OF THE BARRIER RAIL ON THE APPROACH SLAB SHALL BE INCLUDED IN THE LUMP SUM CONTRACT PRICE BID FOR BRIDGE APPROACH SLABS.

APPROACH SLAB SHALL NOT BE CONSTRUCTED PRIOR TO COMPLETION OF THE BRIDGE DECK.

FOR REINFORCED BRIDGE APPROACH FILL INCLUDING FABRIC, IMPERMEABLE GEOMEMBRANE, 102mm Ø DRAINAGE PIPE, \*78M STONE, AND SELECT MATERIAL, SEE ROADWAY PLANS.

TEMPORARY DRAINAGE AND TEMPORARY BERM AND SLOPE DRAINS WILL BE PAID FOR UNDER THE LUMP SUM PRICE FOR BRIDGE APPROACH SLAB.

AREA BETWEEN THE WINGWALL AND APPROACH SLAB SHALL BE GRADED TO DRAIN THE WATER AWAY FROM THE FILL FACE OF THE BRIDGE.

THE 150mm COMP. A.B.C. SHALL EXTEND 3m BEYOND THE END OF THE APPROACH SLAB AND 300mm OUTSIDE OF EACH EDGE OF THE SLAB.

THE CONTRACTOR MAY USE 100mm TYPE B-25.0B ASPHALT CONCRETE COURSE IN LIEU OF 150mm COMP. A.B.C. IF THIS OPTION IS USED, THE BASE COURSE SHALL EXTEND 300mm BEYOND THE END OF THE APPROACH SLAB AND THE WIDTH SHALL BE THE SAME AS THAT OF THE APPROACH SLAB.

THE CONTRACTOR MAY USE 125mm CLASS "A" CONCRETE BASE IN LIEU OF 150mm COMP. A.B.C. IF THIS OPTION IS USED, THE CONCRETE BASE SHALL EXTEND 300mm BEYOND THE END OF THE APPROACH SLAB AND THE WIDTH SHALL BE THE SAME AS THAT OF THE APPROACH SLAB. THE CONCRETE SHALL BE FINISHED TO A SMOOTH SURFACE AND A LAYER OF 13.6 kg. ROOFING FELT SHALL BE PLACED BETWEEN THE CONCRETE BASE AND THE APPROACH SLAB TO PREVENT BOND. THE APPROACH SLAB SHALL NOT BE CAST UNTIL THE CONCRETE BASE HAS REACHED AN AGE OF THREE CURING DAYS.

THE JOINT SHALL BE SAWED PRIOR TO THE CASTING OF THE BARRIER RAIL.

FOR EVAZOTE JOINT SEALS, SEE SPECIAL PROVISIONS.

THE NOMINAL UNCOMPRESSED SEAL WIDTH OF THE EVAZOTE JOINT SEAL SHALL BE 87mm.

**BILL OF MATERIAL**

**APPROACH SLAB-END BENT 2**

BAR	NO.	SIZE	TYPE	LENGTH	WEIGHT
*A3	50	#16	STR	16100	1249
A4	100	#13	STR	8420	837
*B1	94	#19	STR	7320	1538
B2	94	#25	STR	7440	2779
*B3	7	#16	STR	3600	39
*B4	7	#16	STR	3440	37
*B5	1	#16	3	2020	3
*B6	1	#16	3	1820	3
*S1	58	#16	STR	980	88
*S2	42	#16	1	1220	80
*S3	20	#16	2	680	21

REINFORCING STEEL 3616 kg.

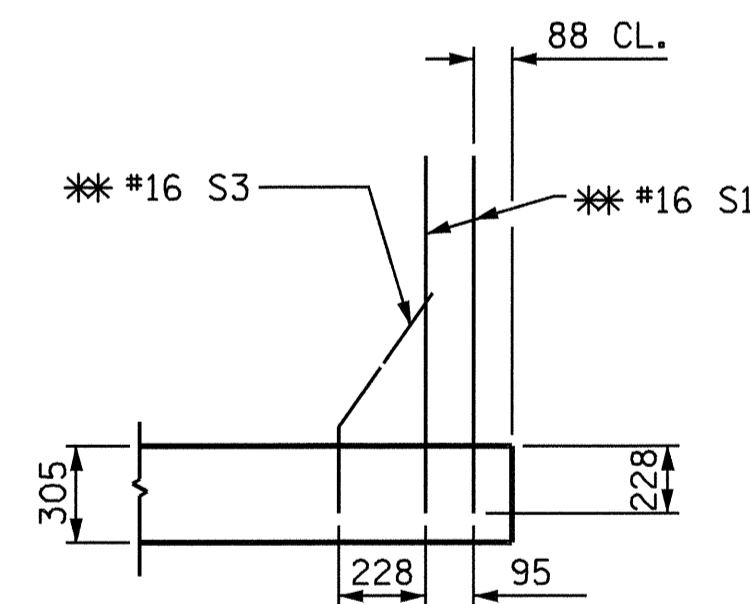
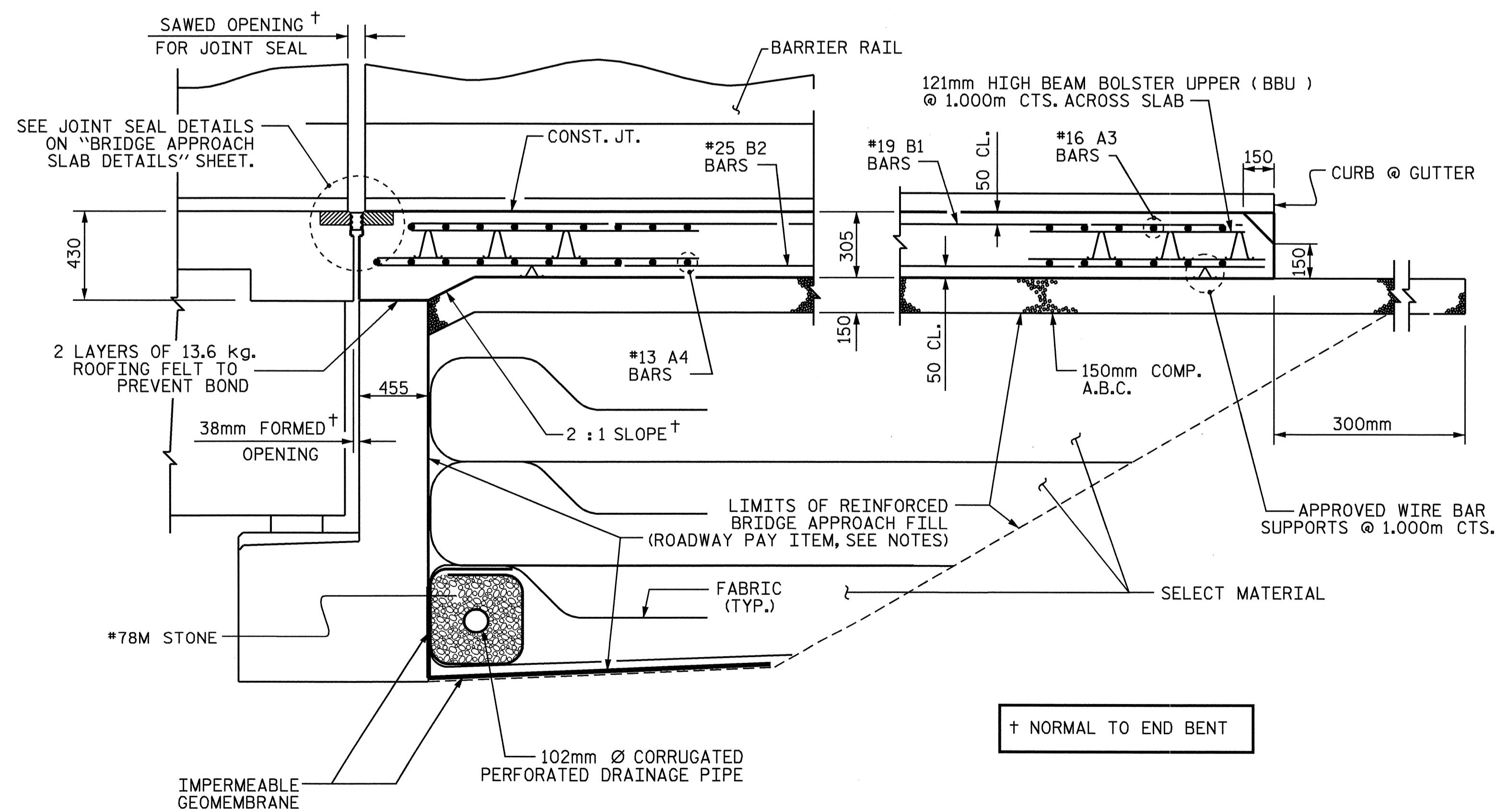
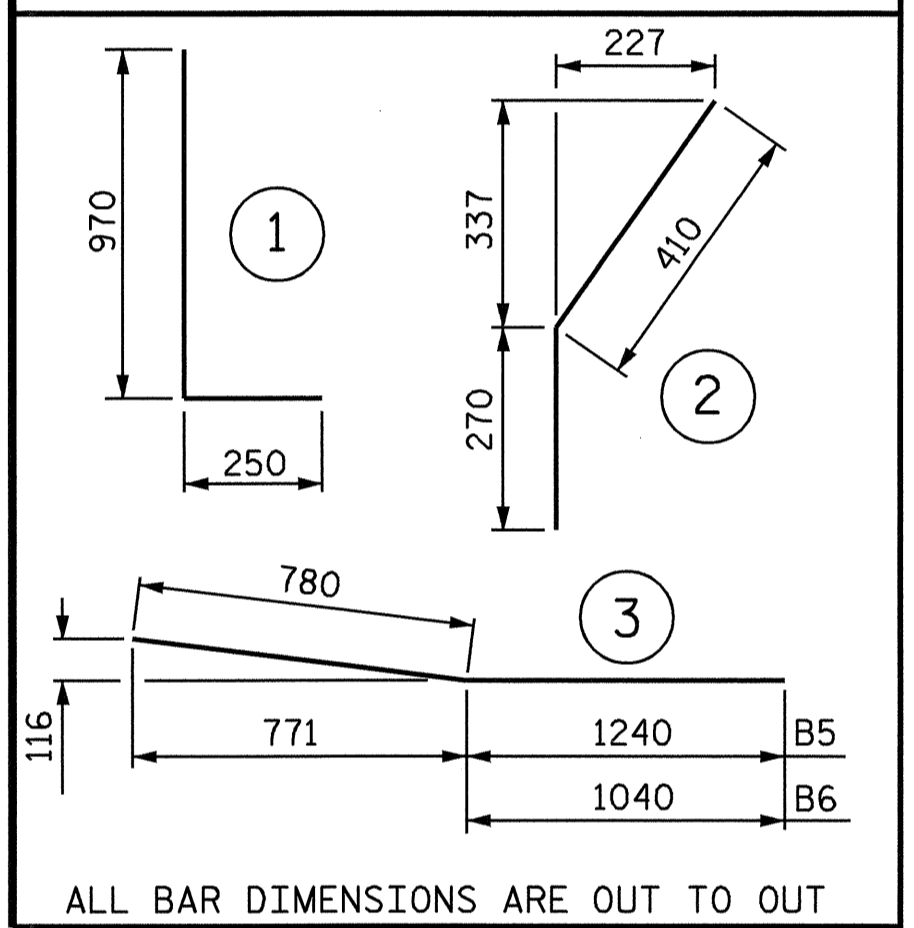
\*EPOXY COATED REINFORCING STEEL 3058 kg.

**CLASS AA CONCRETE BREAKDOWN**

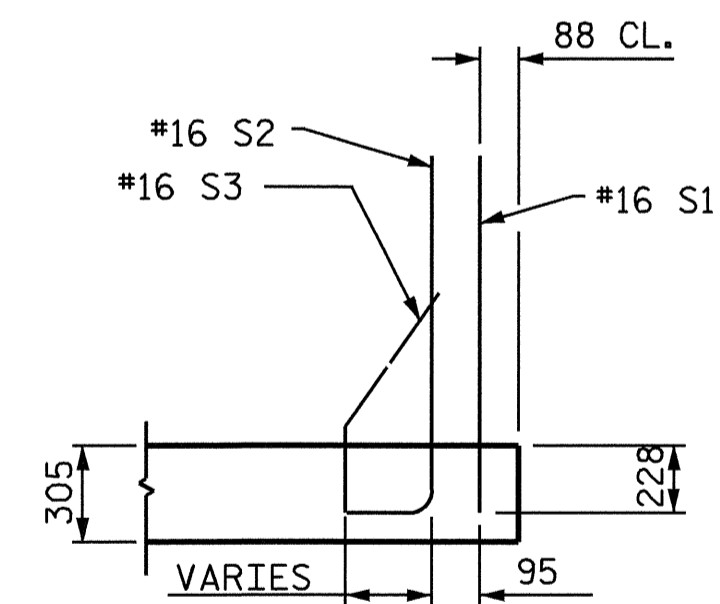
POUR 1 SLAB & CURBS 34.4 C. M.  
POUR 2 RAIL 1.6 C. M.

CLASS AA CONCRETE 36.0 C. M.

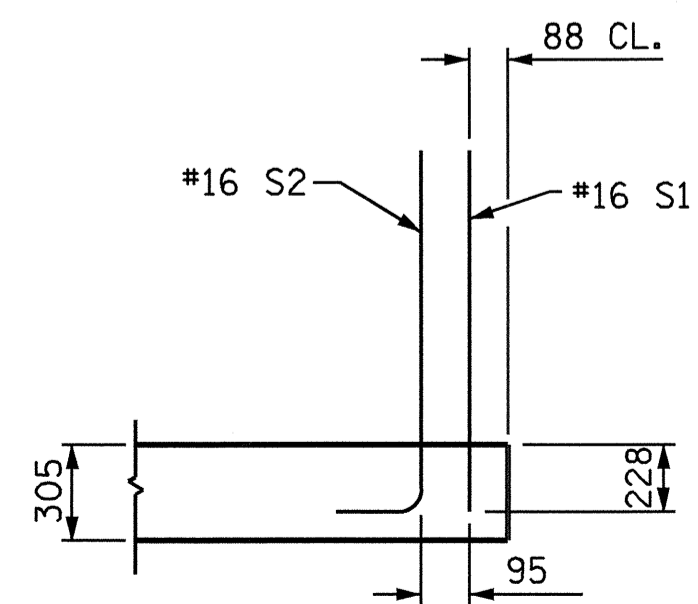
**BAR TYPES**



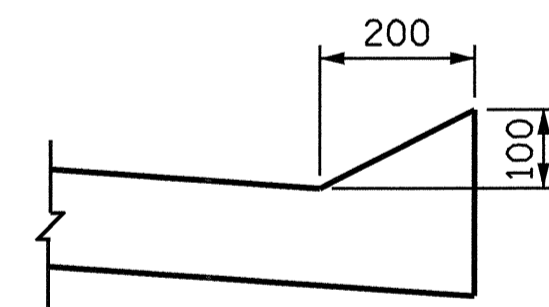
**SECTION K-K**  
\*\* ADHESIVELY ANCHORED



**SECTION L-L**



**SECTION M-M**

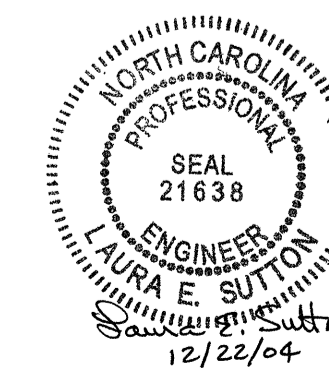


**SECTION N-N**

PROJECT NO. R-0977A  
CHEROKEE COUNTY  
STATION: 16+02.300-LC1B-

SHEET 6 OF 7

STATE OF NORTH CAROLINA  
DEPARTMENT OF TRANSPORTATION  
RALEIGH  
STANDARD  
BRIDGE APPROACH SLAB  
FOR FLEXIBLE PAVEMENT  
WITH BARRIER RAIL  
(AT END BENT 2)



REVISIONS						SHEET NO.
NO.	BY:	DATE:	NO.	BY:	DATE:	S-48
1			3			TOTAL SHEETS 230
2			4			

ASSEMBLED BY : A.S. CALLAWAY DATE : 9/14/04  
CHECKED BY : P.C. BREWER DATE : 10/26/04  
DRAWN BY : RWW 8/01  
CHECKED BY : LES 8/01

ADDED 12/01  
REV. 5/7/03R RWW/JTE