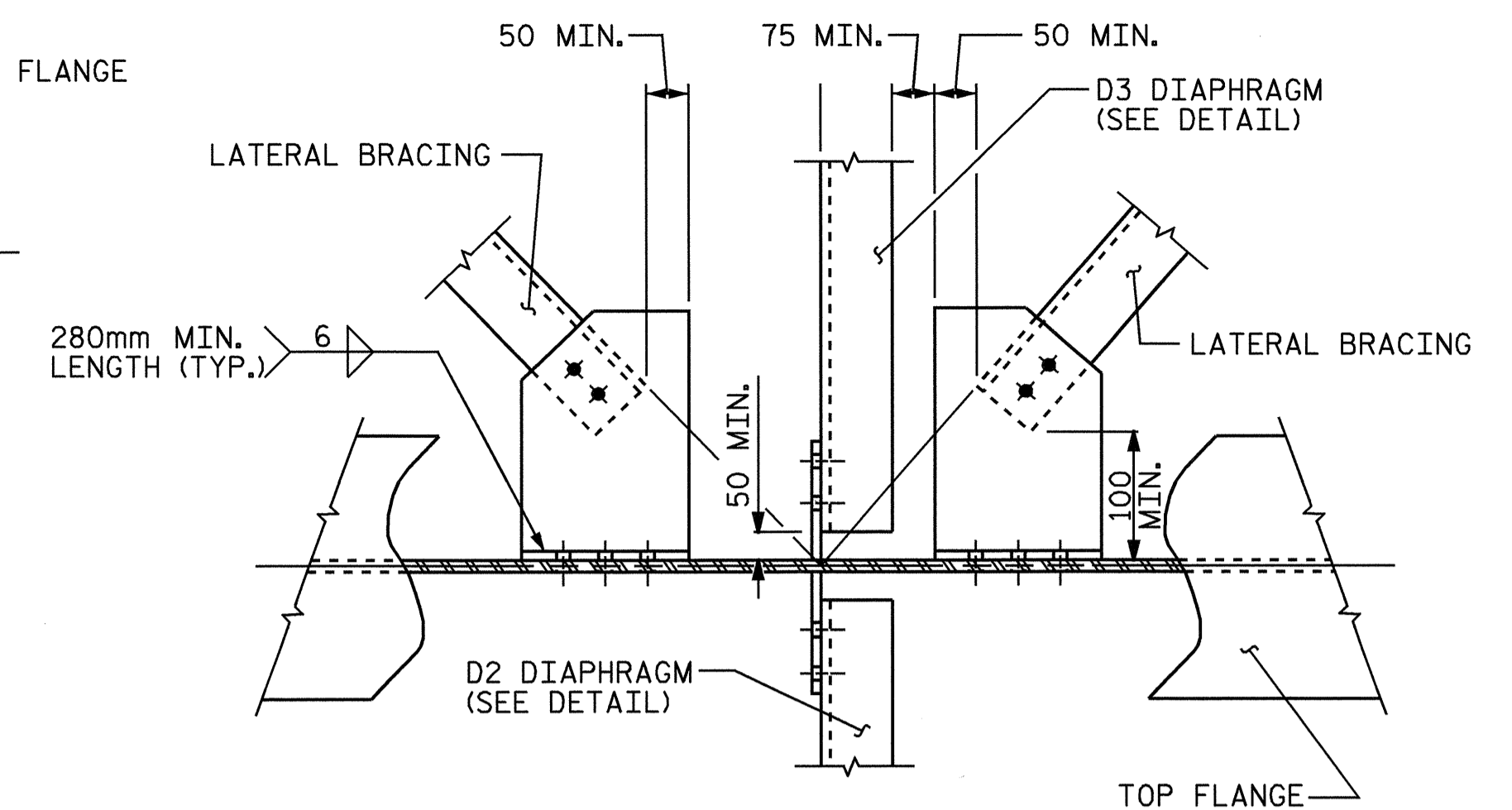
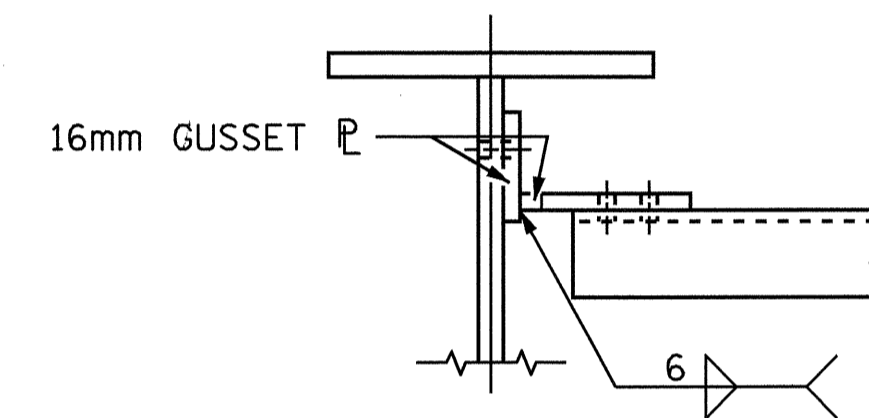


**PART PLAN - TOP FLANGE LATERAL BRACING**

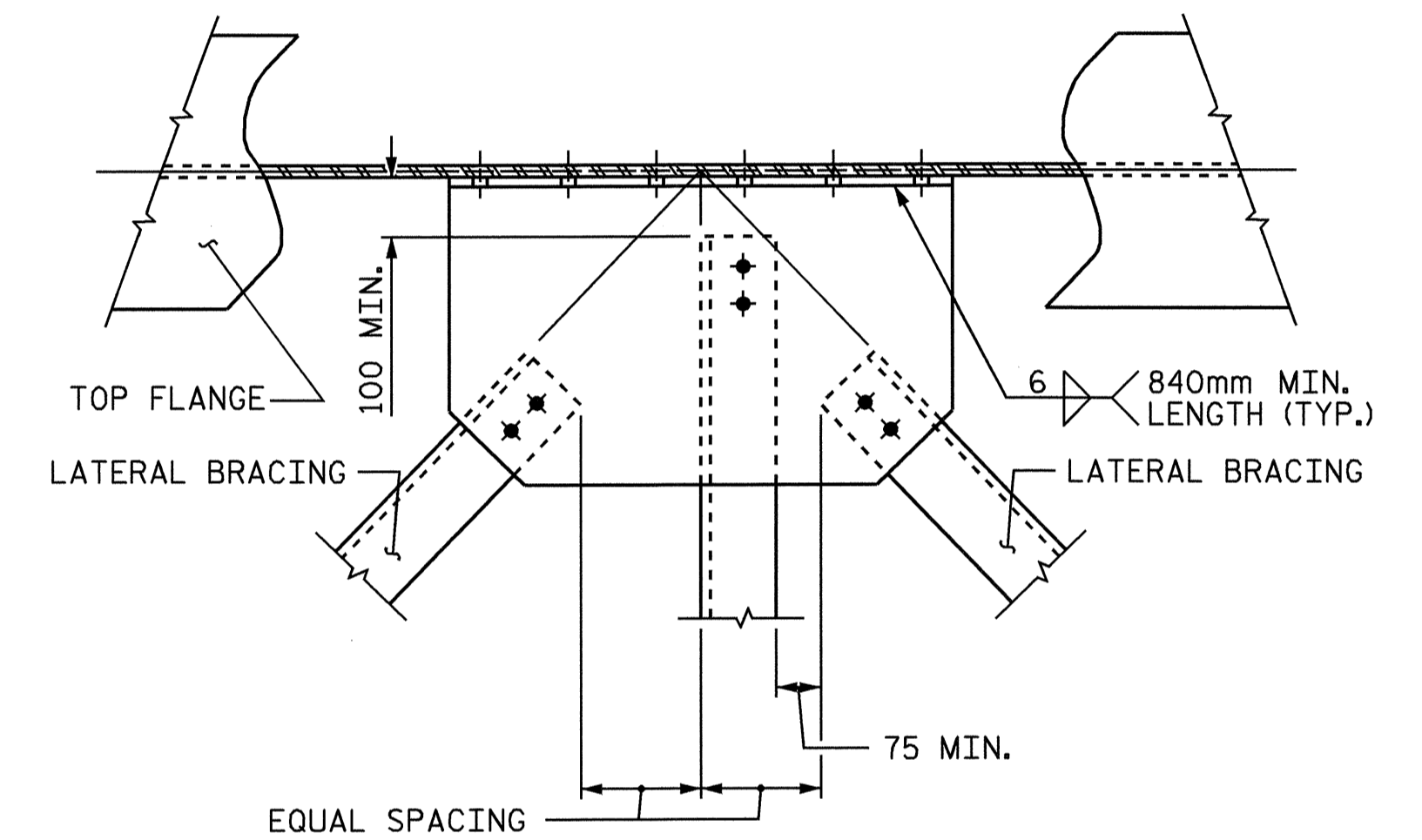
GIRDER #1 AND GIRDER #2 SHOWN, GIRDER #3 AND GIRDER #4 SIMILAR.  
ALL GUSSET P'S AND CONNECTOR P'S ARE 16mm THICK.



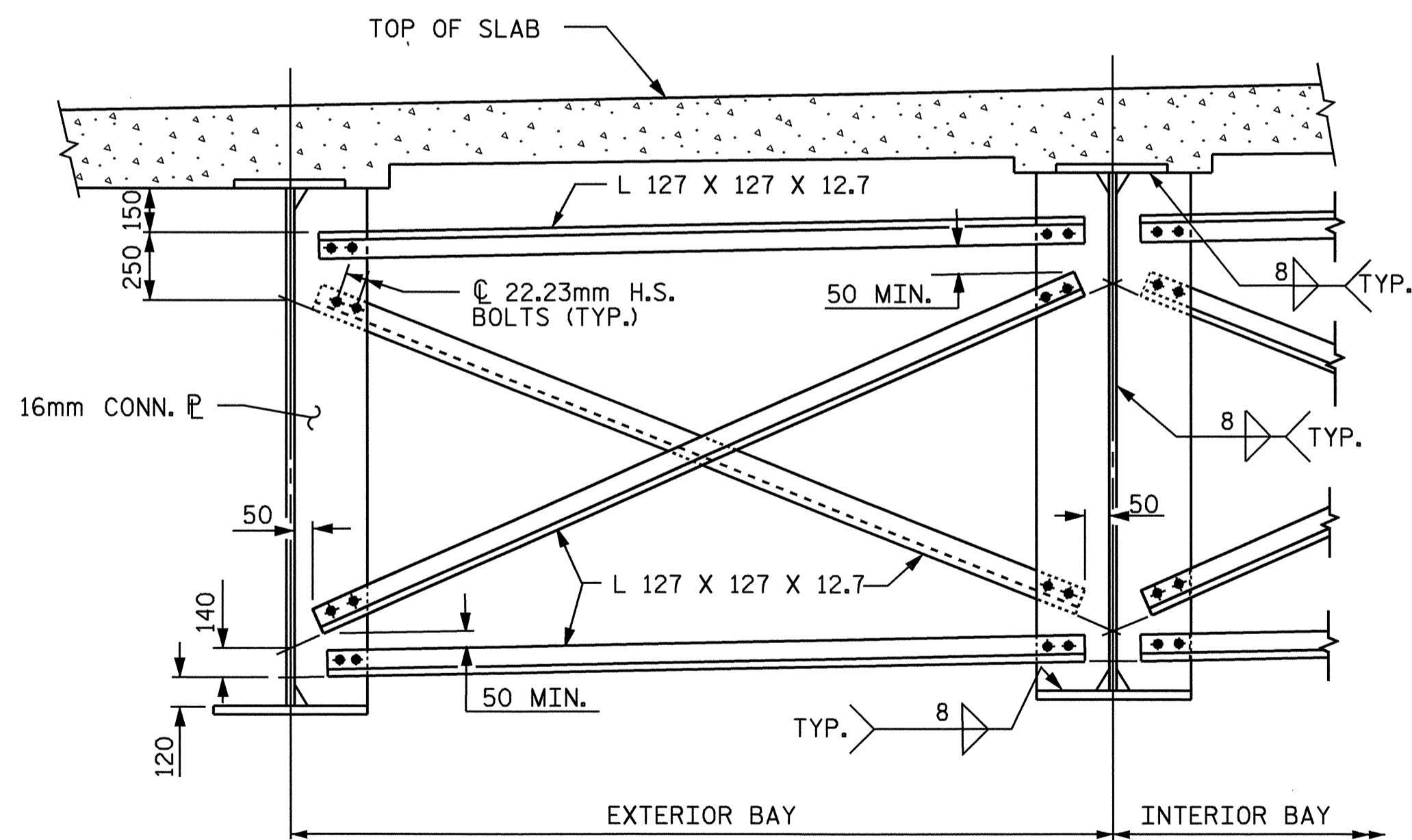
**DETAIL "A"**



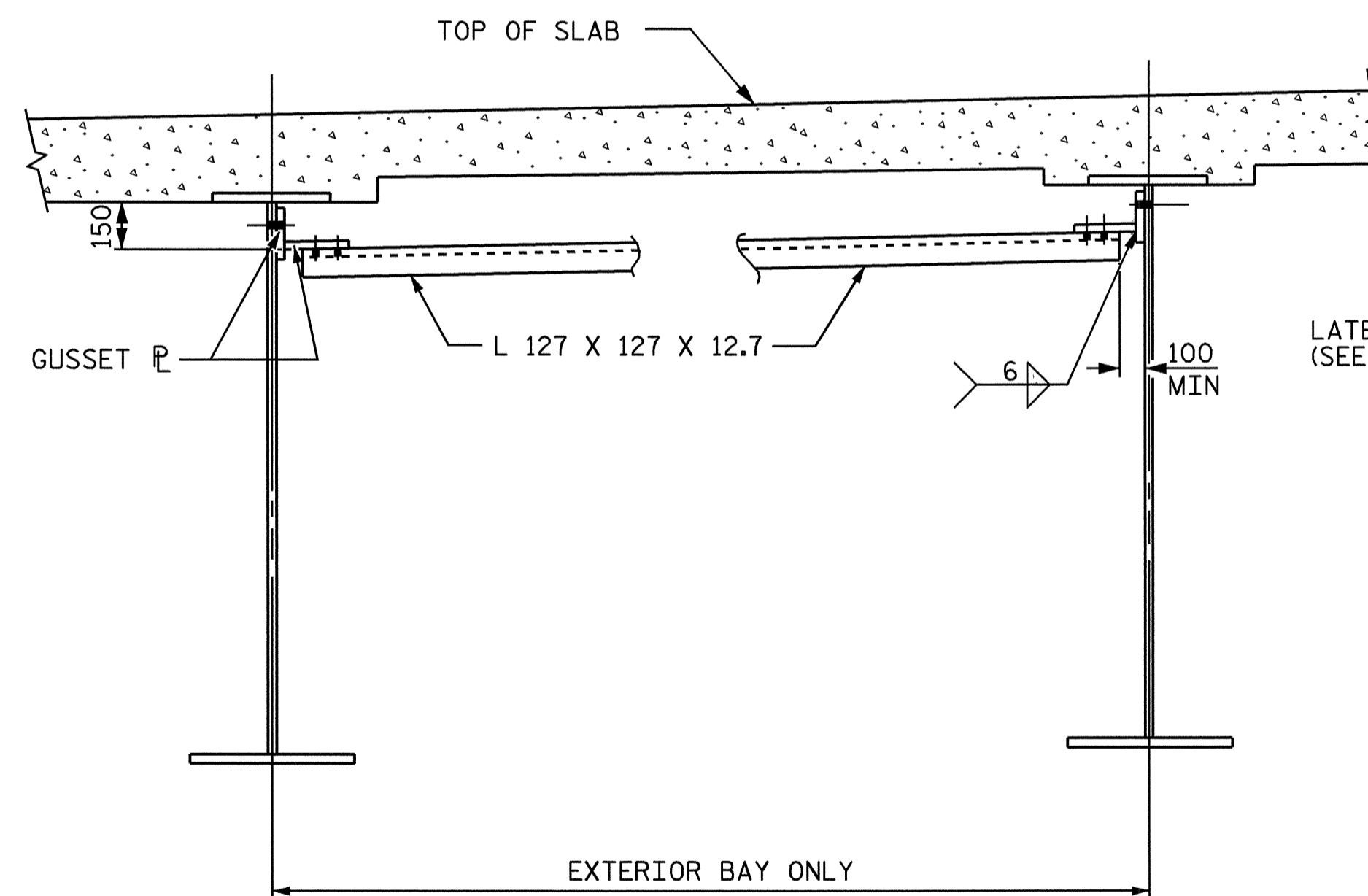
**SECTION THRU CONNECTION**



**DETAIL "B"**

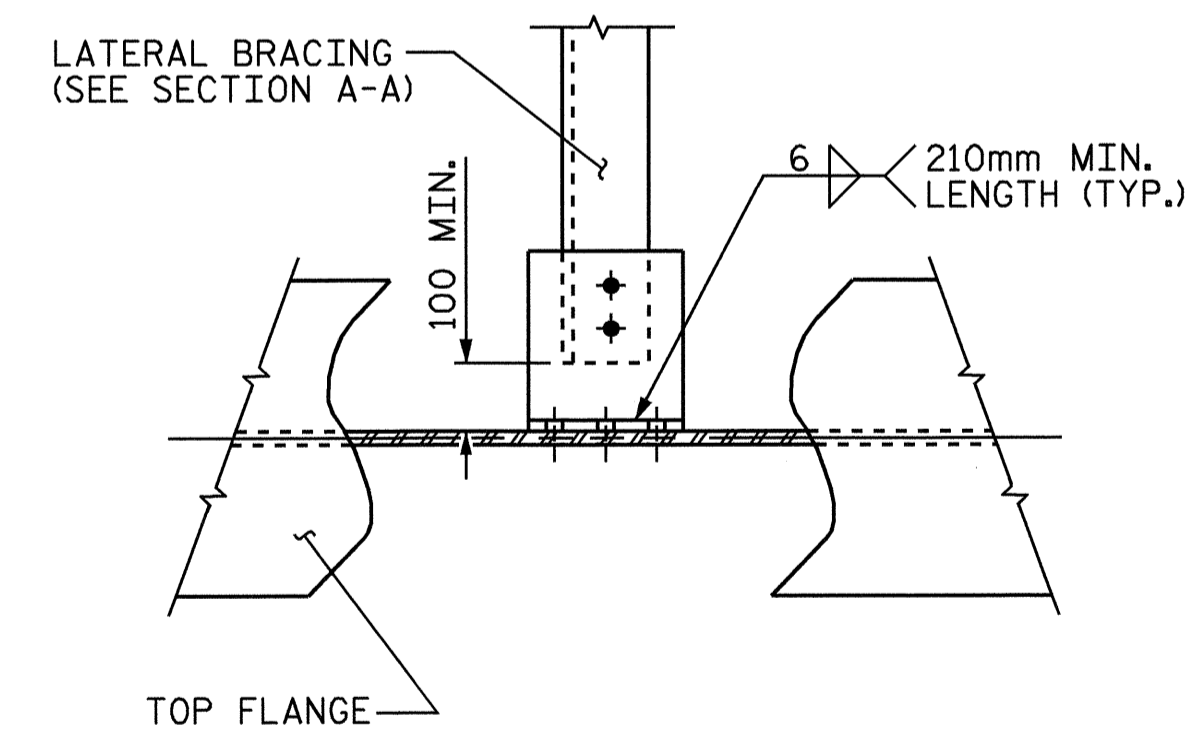


**TYPICAL INTERMEDIATE DIAPHRAGM WITH LATERAL BRACING (D3)**



**SECTION A-A**

L2 LATERAL BRACING AT TOP FLANGE (L1 LATERAL BRACING SIM.)



**DETAIL "C"**

PROJECT NO. R-0977A  
CHEROKEE COUNTY  
STATION: 24+60.500 -LC1B-

SHEET 4 OF 6

STATE OF NORTH CAROLINA  
DEPARTMENT OF TRANSPORTATION  
RALEIGH  
SUPERSTRUCTURE  
STRUCTURAL STEEL  
DETAILS

DRAWN BY: T.H. FANG/MAA DATE: 6-04  
CHECKED BY: B.N. BARODAWALA DATE: 8-10-04

20-DEC-2004 16:26  
W:\SquadL\R-0977a\str3\mallen\R0977A.sd\_SS\_03.dgn  
Isuttou

*Ting H. Fang*  
Professional Engineer  
Seal 16301  
12/22/04

REVISIONS						SHEET NO.
NO.	BY:	DATE:	NO.	BY:	DATE:	S-91
1			3			TOTAL SHEETS
2			4			230

STR. #3