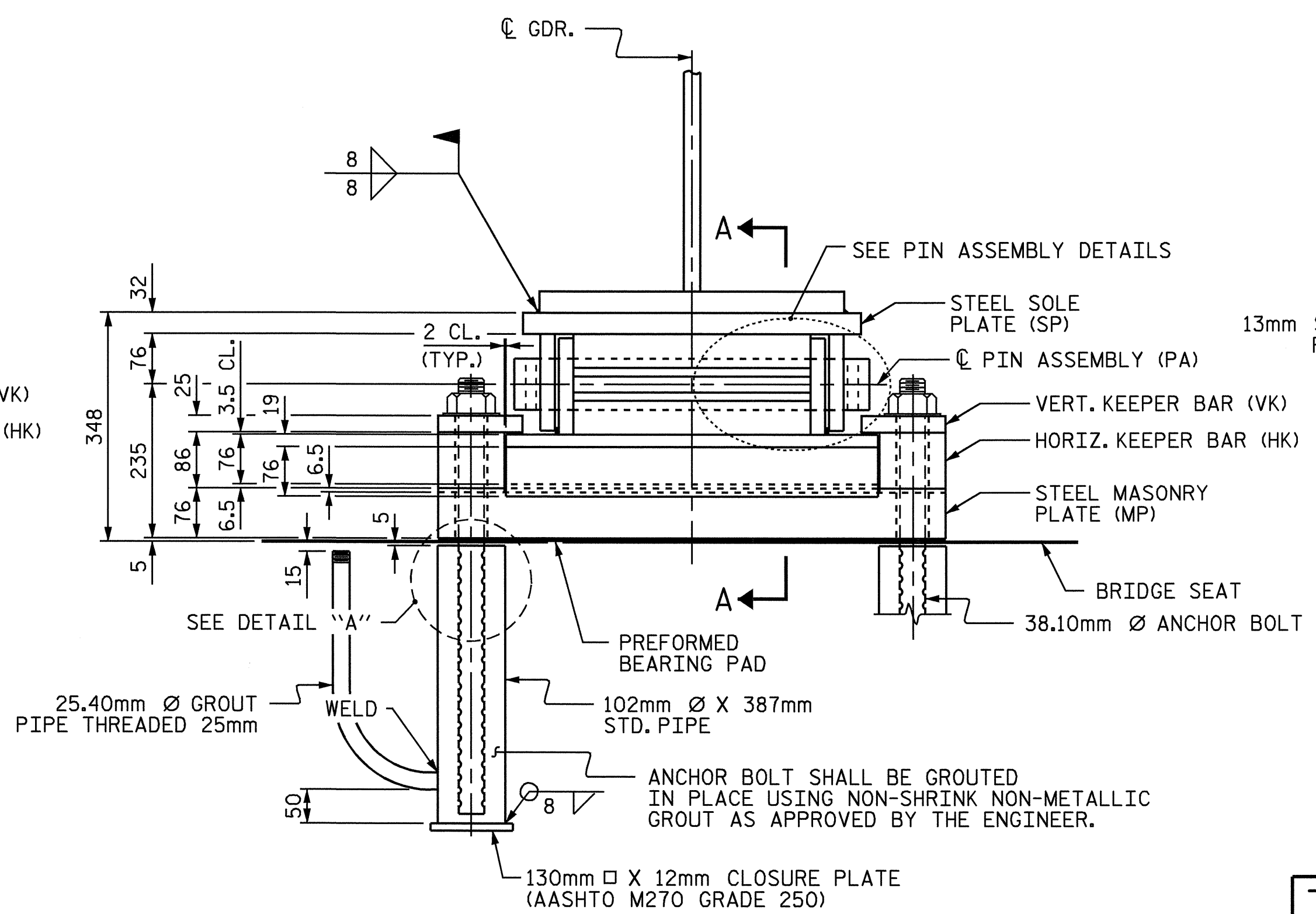
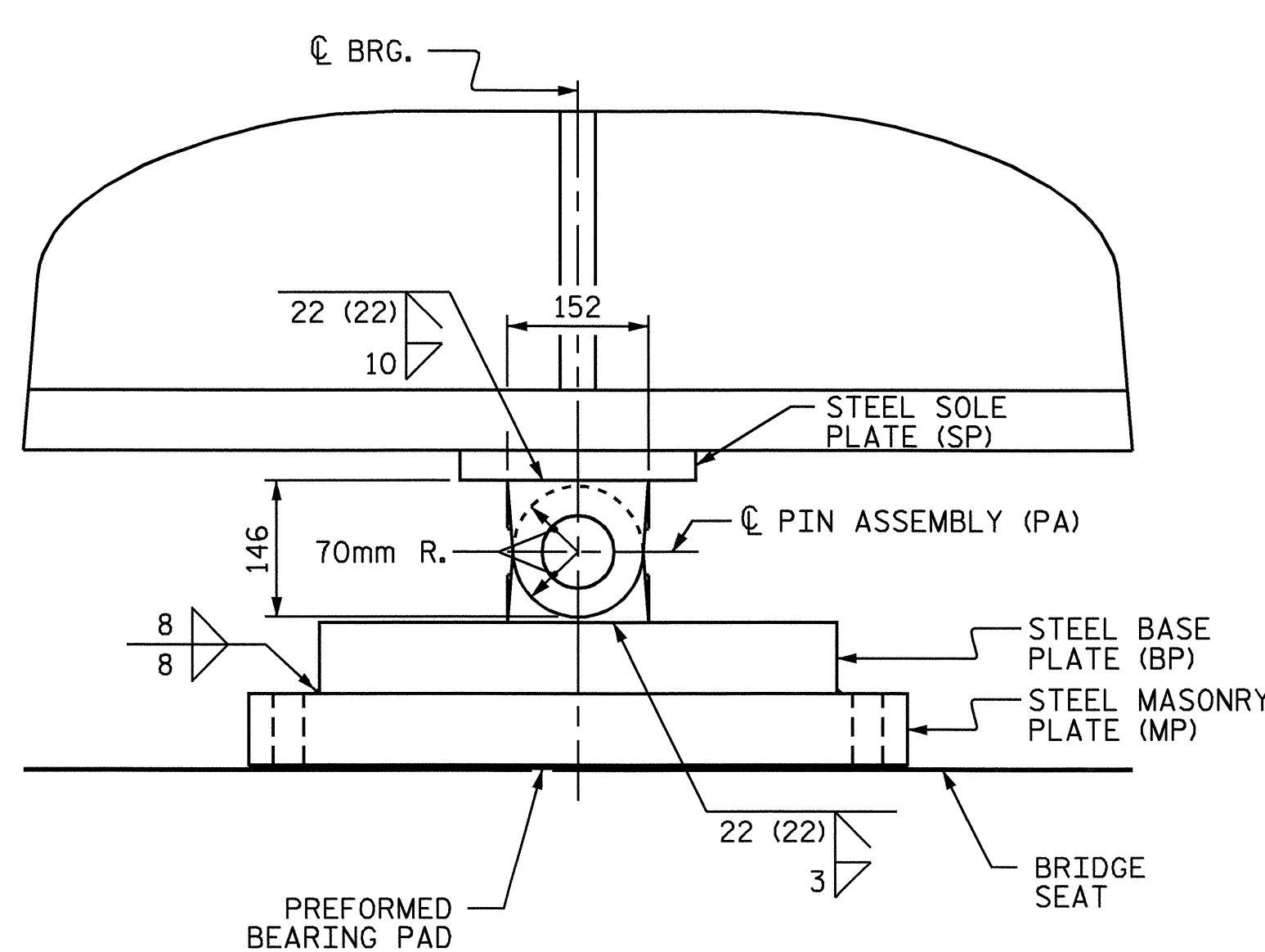


END VIEW

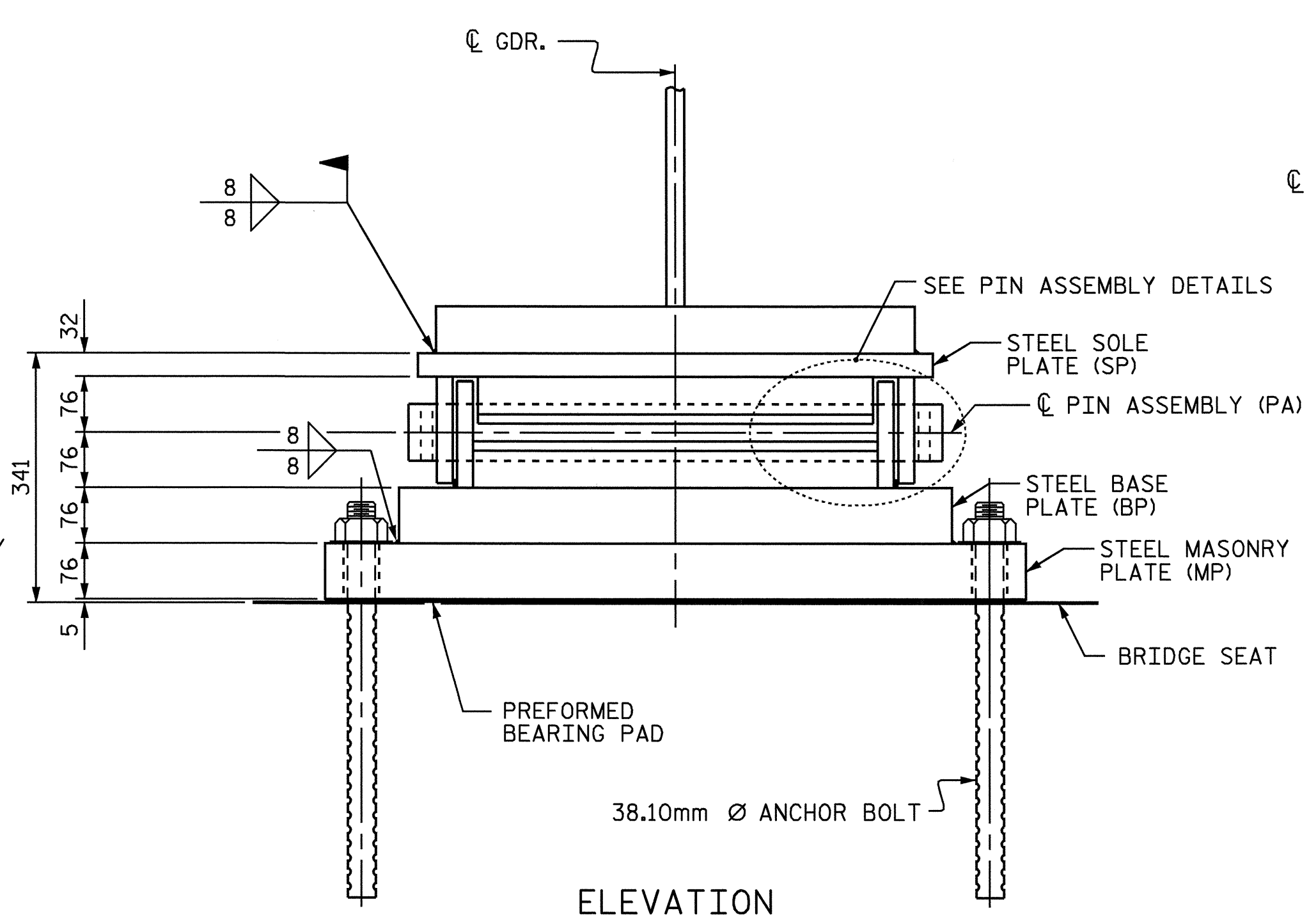


ELEVATION

EXPANSION BEARING DETAILS



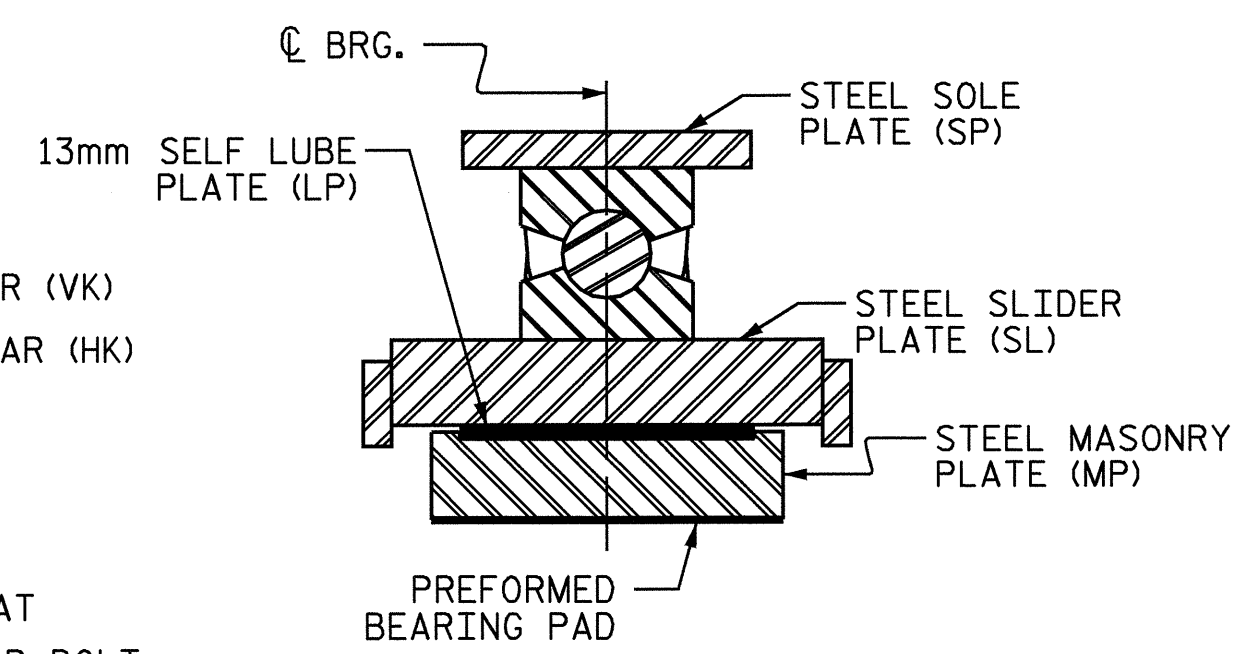
END VIEW



ELEVATION

FIXED BEARING DETAILS

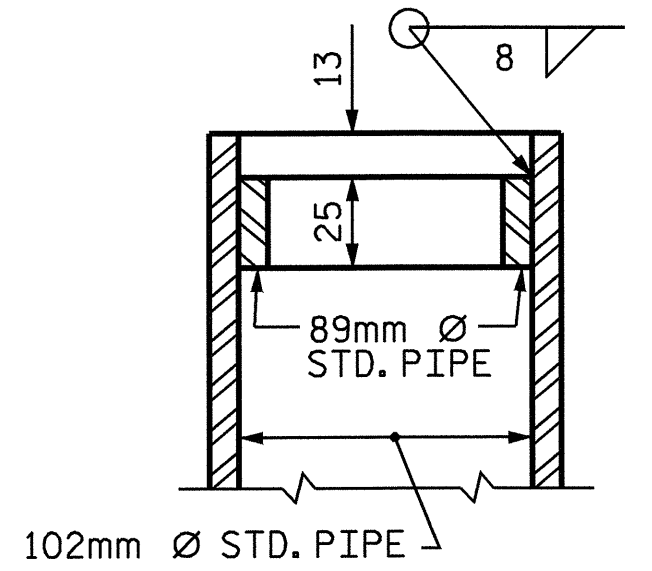
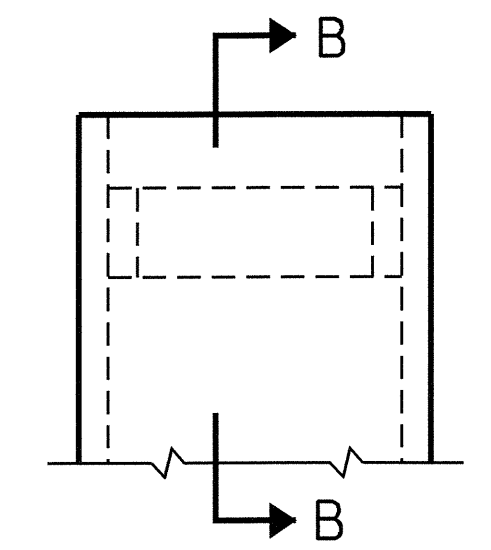
NOTES
 FOR PIN ROCKER BEARINGS, SEE SPECIAL PROVISIONS.
 FOR THERMAL SPRAYED COATINGS (METALLIZATION), SEE SPECIAL PROVISIONS.
 THE CLOSURE PLATE, GROUT PIPE, AND STANDARD PIPE FOR THIS ASSEMBLY NEED NOT BE GALVANIZED.
 AT ALL POINTS OF SUPPORT IN SPANS A & B, NUTS FOR ANCHOR BOLTS SHALL BE TIGHTENED FINGER TIGHT AND GIVEN AN ADDITIONAL 1/4 TURN.
 THE THREAD OF THE NUT AND BOLT SHALL THEN BE BURRED WITH A SHARP POINTED TOOL.
 AFTER BEARING ASSEMBLY IS IN PLACE AND ANCHOR BOLTS HAVE BEEN FINALLY POSITIONED, THEY SHALL BE GROUTED IN PLACE AS SHOWN.
 SOLE PLATES SHOULD BE WELDED TO GIRDER FLANGES AND ANCHOR BOLTS SHOULD BE GROUTED BEFORE FALSEWORK IS PLACED.
 ALL SURFACES OF BEARING PLATES SHALL BE SMOOTH AND STRAIGHT.



SECTION A-A

TABLE FOR LOADS AND MOVEMENTS

BEARING	LOCATION	VERTICAL LOAD (KN)			TOTAL MOVEMENT (mm)
		DEAD	LIVE	TOTAL	
PR1 (EXP.)	E.BT. 1, 2	968	507	1475	54
PR2 (FIX.)	BT. 1	3492	1238	4730	--



SECTION B-B

DETAIL "A"

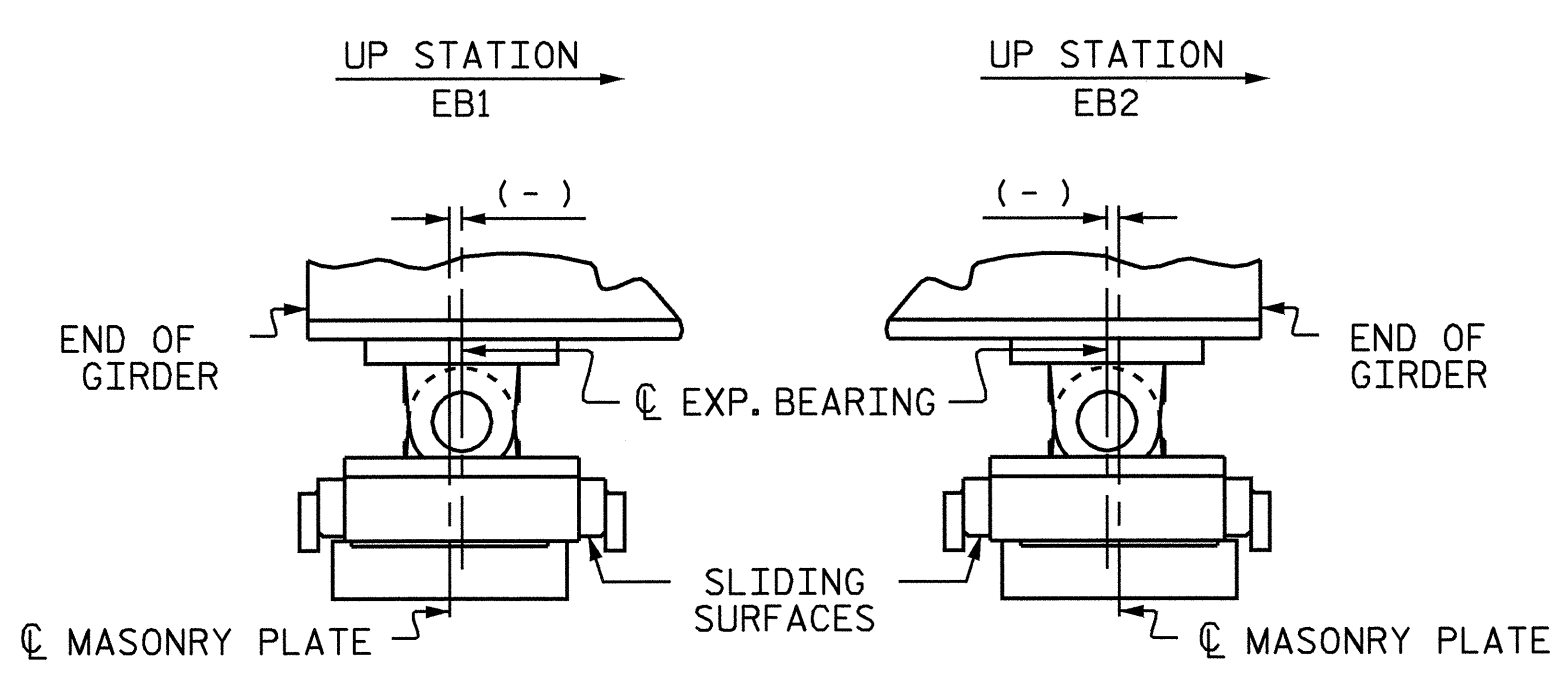


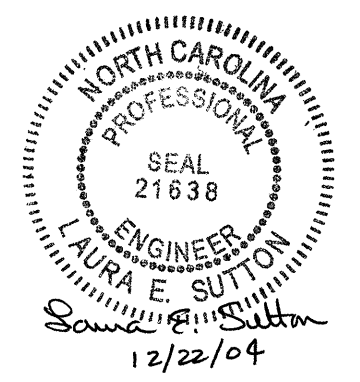
PLATE SETTING DATA
(EXPANSION BEARINGS)

TEMPERATURE AT TIME OF SETTING	0° C	16° C	32° C
E.BT. 1, 2	-16	0	16

TEMPERATURE SETTING DETAIL

PROJECT NO. R-0977A
 CHEROKEE COUNTY
 STATION: 24+60.500-LC1B-

SHEET 1 OF 2



STATE OF NORTH CAROLINA
 DEPARTMENT OF TRANSPORTATION
 RALEIGH

PIN ROCKER BEARING DETAILS

REVISIONS						SHEET NO.
NO.	BY:	DATE:	NO.	BY:	DATE:	S-94
1			3			TOTAL SHEETS
2			4			230

DRAWN BY: L.E. SUTTON DATE: 10/15/04
 CHECKED BY: M.A. ALLEN DATE: 10/25/04