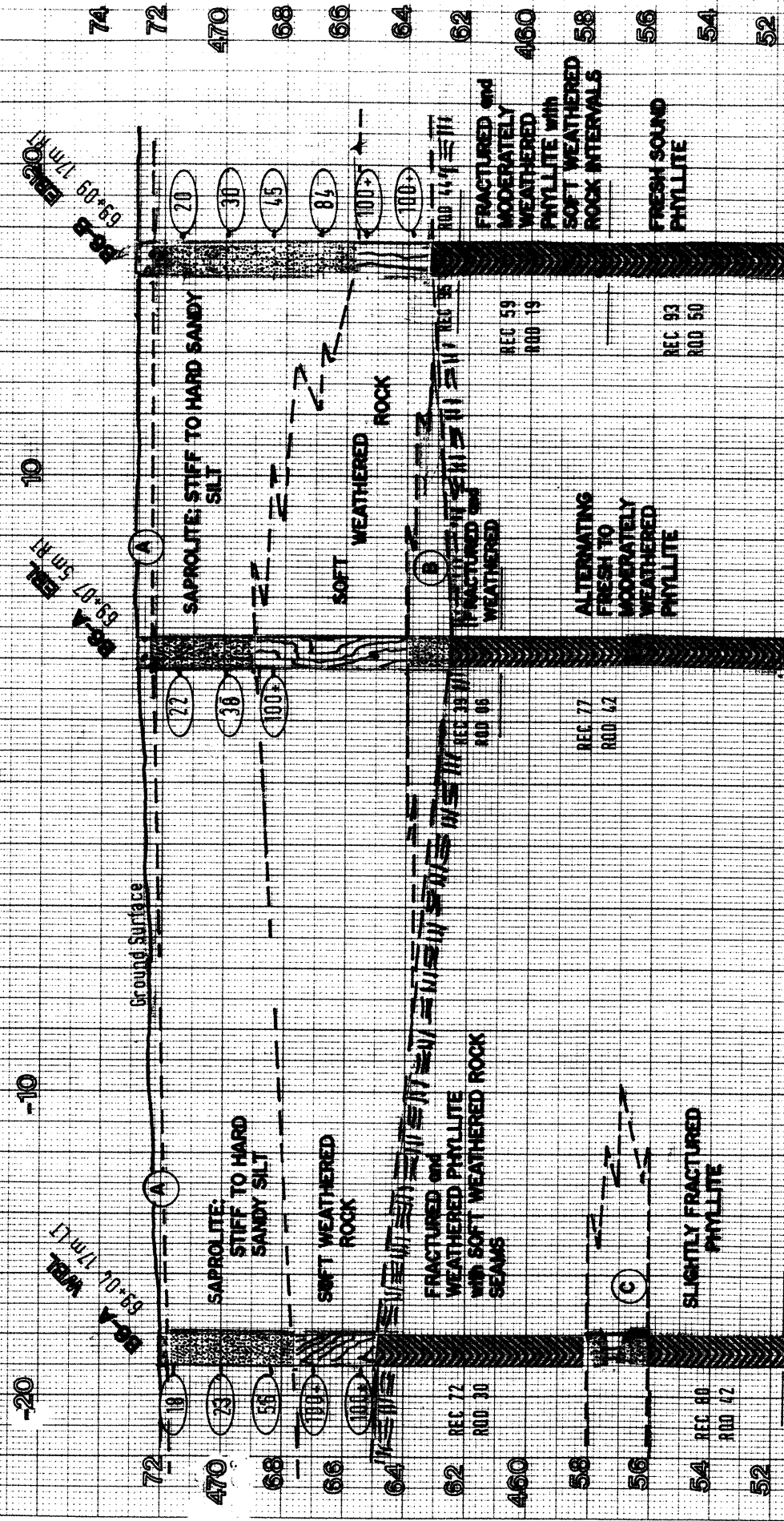


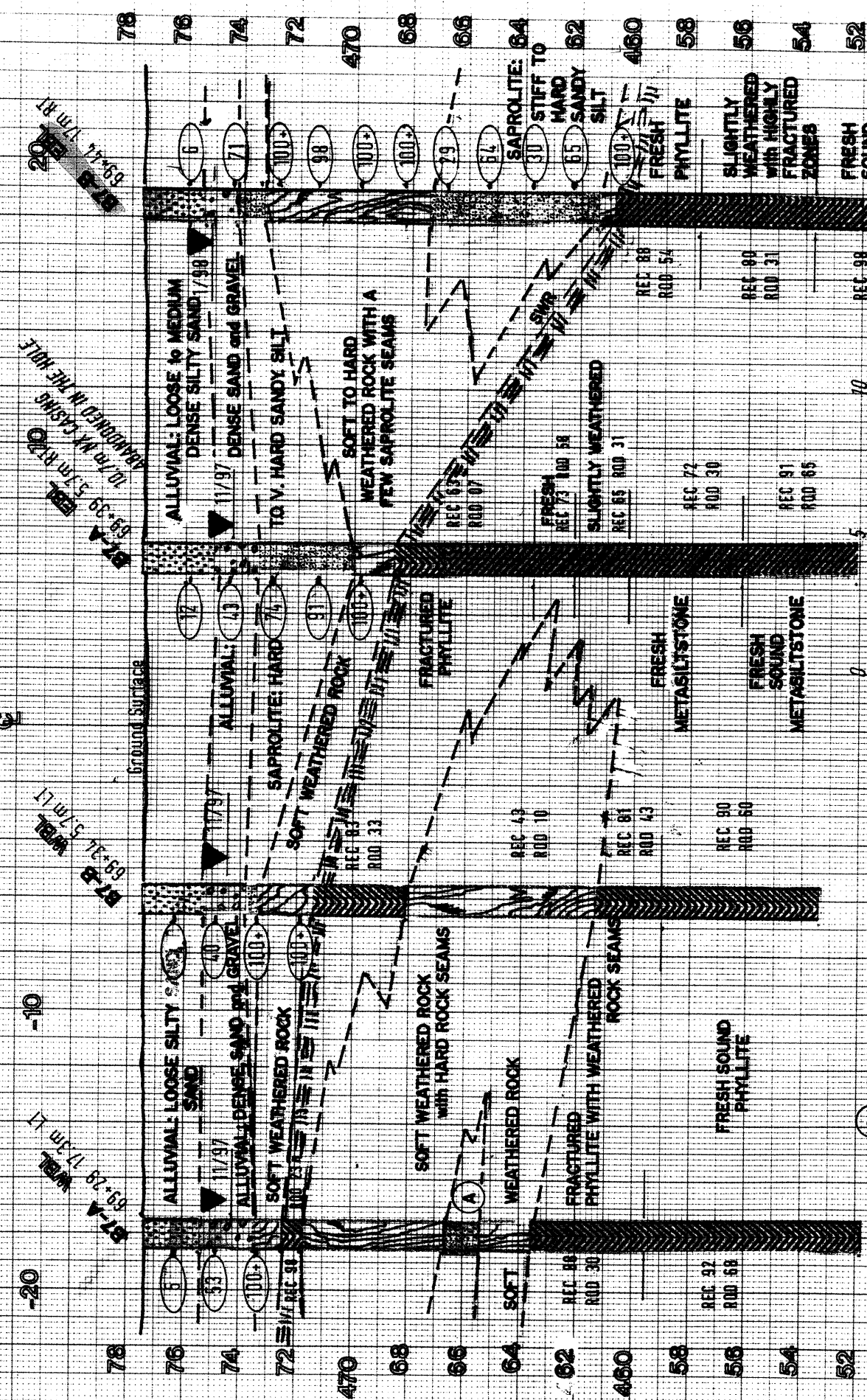
**8.1910203 / R-977A**  
**CHEROKEE COUNTY**  
 PROPOSED BRIDGE ON US 64, OVER HIWASSEE RIVER, AT PEACHTREE  
 BRIDGE No. 4

**CROSS-SECTION B6-**



- (A) ALLUVIAL: LOOSE SAND and GRAVEL
- (B) SAPROLITE: STIFF TO V. HARD SANDY SILT
- (C) SAPROLITE: HARD SANDY SILT WITH WEATHERED ROCK INTERVALS

**CROSS-SECTION B7-**



- (A) SAPROLITE: STIFF TO HARD SANDY SILT

METRIC 1:200