

CLEARING AND GRUBBING
EROSION CONTROL FOR
CONSTRUCTION SHEET 13

NOTE:
PLACE TEMPORARY ROCK SEDIMENT DAMS TYPE-B
AND TEMPORARY ROCK SILT CHECKS TYPE-A AT
DRAINAGE OUTLETS.

<p>Pls Sta 37+34.020 $\Theta_s = 0^\circ 58' 56.0''$ $L_s = 60.000$ $LT = 40.001$ $ST = 20.001$</p>	<p>Pls Sta 42+09.117 $\Delta = 29^\circ 09' 16.1''$ (RT) $L = 890.472$ $T = 455.098$ $R = 1,750.000$</p>	<p>Pls Sta 46+64.493 $\Theta_s = 0^\circ 58' 56.0''$ $L_s = 60.000$ $LT = 40.001$ $ST = 20.001$</p>	<p>Pls Sta 37+70.910 $\Theta_s = 1^\circ 28' 24.0''$ $L_s = 90.000$ $T = 60.002$ $ST = 30.002$</p>	<p>Pls Sta 42+40.027 $\Delta = 28^\circ 10' 20.1''$ (RT) $L = 860.472$ $T = 439.119$ $R = 1,750.000$ $Se = 0.03$ $DS = 100$ km/h</p>	<p>Pls Sta 46+91.382 $\Theta_s = 1^\circ 28' 24.0''$ $L_s = 90.000$ $LT = 60.002$ $ST = 30.002$</p>
---	--	---	--	--	---

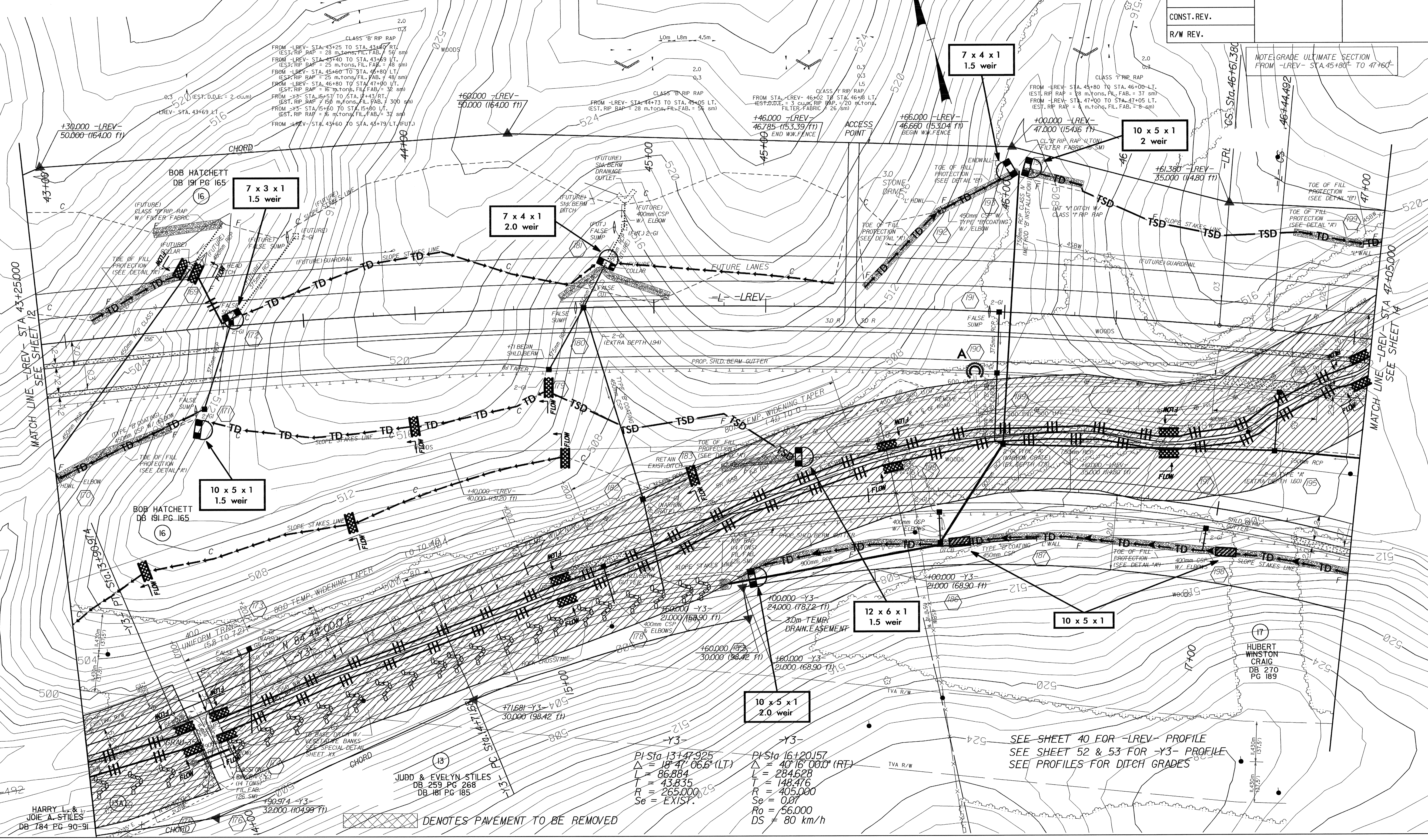
METRIC

5 0 10

CONST. REV.
R/W REV.

PROJECT REFERENCE NO. R-977A HIGHWAY DESIGN ENGINEER	SHEET NO. EC-15/CONST.13 HYDRAULICS ENGINEER
--	--

NOTE: GRADE ULTIMATE SECTION FROM -LREV- STA. 45+80 TO 47+60



HARRY L. & JOIE A. STILES
DB 784 PG 90-91

JUDD & EVELYN STILES
DB 259 PG 268
DB 181 PG 185

HUBERT WINSTON CRAIG
DB 270 PG 189

<p>Pls Sta 131+7.925 $\Delta = 18^\circ 47' 06.6''$ (LT) $L = 86.884$ $T = 43.835$ $R = 265.000$ $Se = EXIST.$</p>	<p>Pls Sta 16+20.157 $\Delta = 40^\circ 16' 00.0''$ (RT) $L = 284.628$ $T = 148.476$ $R = 405.000$ $Se = 0.07$ $Ro = 56.000$ $DS = 80$ km/h</p>
--	---

SEE SHEET 40 FOR -LREV- PROFILE
SEE SHEET 52 & 53 FOR -Y3- PROFILE
SEE PROFILES FOR DITCH GRADES

XXXXXX DENOTES PAVEMENT TO BE REMOVED