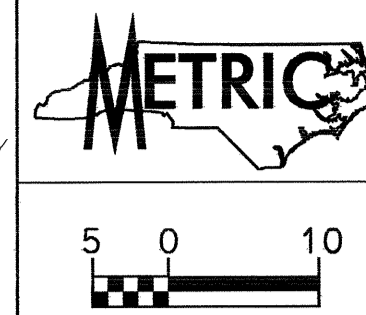


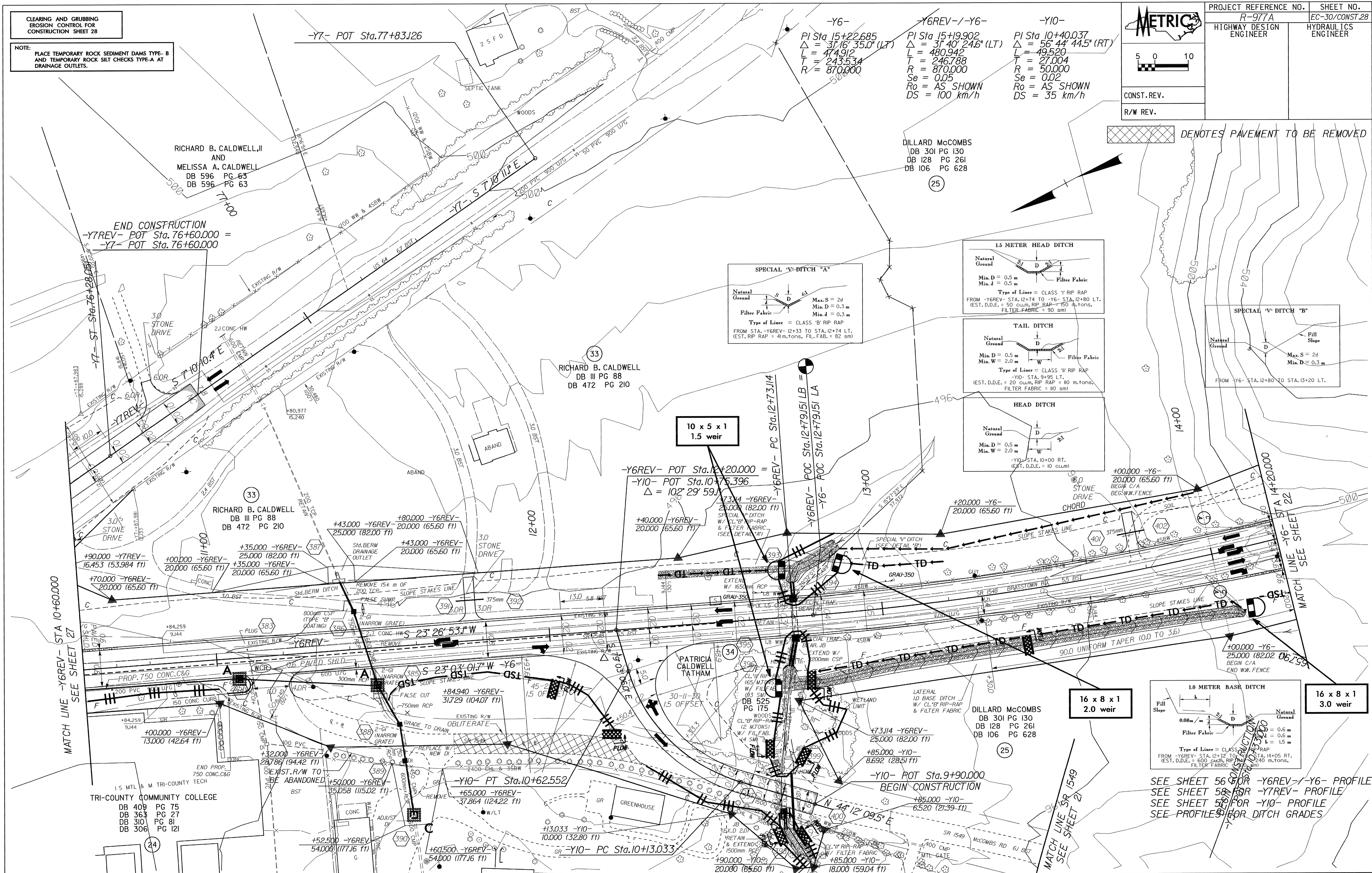
CLEARING AND GRUBBING
EROSION CONTROL FOR
CONSTRUCTION SHEET 28

NOTE:
PLACE TEMPORARY ROCK SEDIMENT DAMS TYPE-B
AND TEMPORARY ROCK SILT CHECKS TYPE-A AT
DRAINAGE OUTLETS.



PROJECT REFERENCE NO. R-977A HIGHWAY DESIGN ENGINEER	SHEET NO. EC-30/CONST.28 HYDRAULICS ENGINEER
CONST. REV.	
R/W REV.	

DENOTES PAVEMENT TO BE REMOVED



-Y6-
PI Sta 15+22.685
 $\Delta = 37' 16'' 35.0''$ (LT)
L = 474.912
T = 243.534
R = 870.000

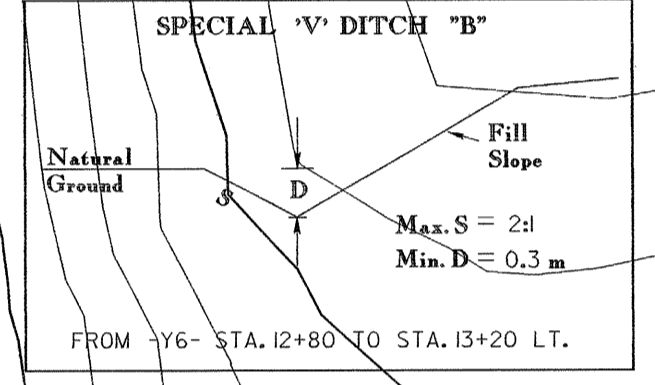
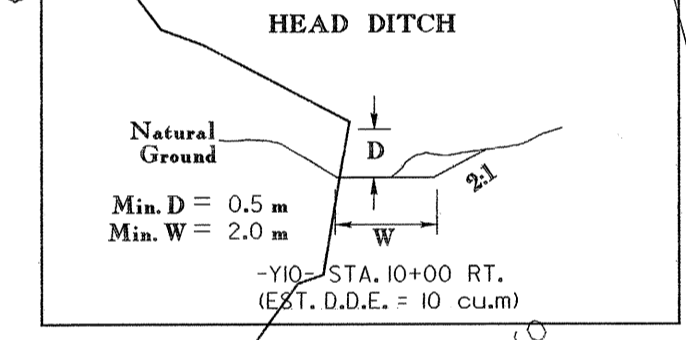
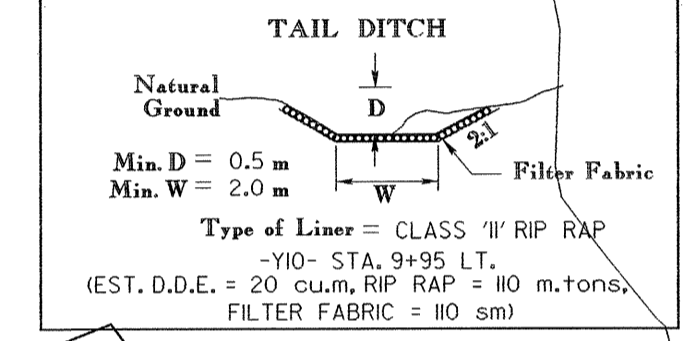
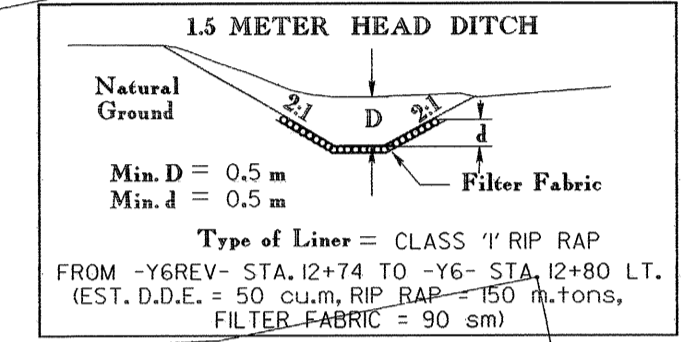
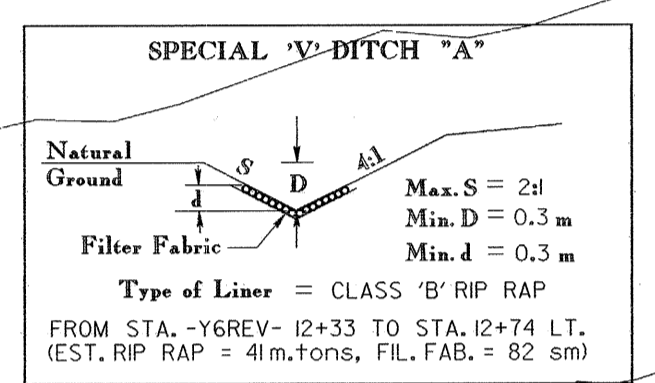
-Y6REV-/-Y6-
PI Sta 15+9.902
 $\Delta = 31' 40'' 24.6''$ (LT)
L = 480.942
T = 246.788
R = 870.000
Se = 0.05
Ro = AS SHOWN
DS = 100 km/h

-Y10-
PI Sta 10+40.037
 $\Delta = 56' 44'' 44.5''$ (RT)
L = 49.520
T = 27.004
R = 50.000
Ro = AS SHOWN
DS = 35 km/h

RICHARD B. CALDWELL, II
AND
MELISSA A. CALDWELL
DB 596 PG 63
DB 596 PG 63

DILLARD McCOMBS
DB 301 PG 130
DB 128 PG 261
DB 106 PG 628

END CONSTRUCTION
-Y7REV- POT Sta. 76+60.000 =
-Y7- POT Sta. 76+60.000

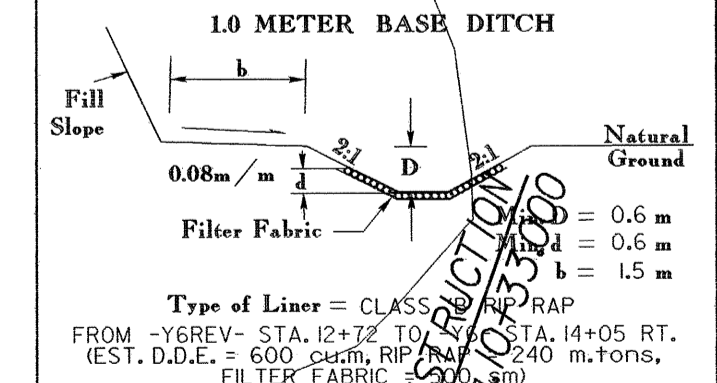


10 x 5 x 1
1.5 weir

-Y6REV- POT Sta. 12+20.000 =
-Y10- POT Sta. 10+75.396
 $\Delta = 102' 29' 59''$

16 x 8 x 1
2.0 weir

16 x 8 x 1
3.0 weir



SEE SHEET 56 FOR -Y6REV-/-Y6- PROFILE
SEE SHEET 58 FOR -Y7REV- PROFILE
SEE SHEET 52 FOR -Y10- PROFILE
SEE PROFILES FOR DITCH GRADES

TRI-COUNTY COMMUNITY COLLEGE
DB 409 PG 75
DB 363 PG 27
DB 310 PG 81
DB 306 PG 121

DILLARD McCOMBS
DB 301 PG 130
DB 128 PG 261
DB 106 PG 628

PATRICIA CALDWELL TATHAM
DB 525 PG 175

-Y10- PT Sta. 10+62.552

-Y10- POT Sta. 9+90.000
BEGIN CONSTRUCTION

-Y10- PC Sta. 10+13.033

MATCH LINE SR 1549
SEE SHEET 21

MATCH LINE -Y6REV- STA 10+60.000
SEE SHEET 27

MATCH LINE -Y6- STA 14+20.000
SEE SHEET 22