

5 0 10

CONST. REV.
R/W REV.

PROJECT REFERENCE NO. R-977A HIGHWAY DESIGN ENGINEER	SHEET NO. EC-46/CONST.16 HYDRAULICS ENGINEER
--	--

-LREV- -LREV- -LREV- -L- -L- -L-

Pls Sta 52+50.153 Pls Sta 55+58.285 Pls Sta 58+56.205 Pls Sta 52+13.333 Pls Sta 55+27.374 Pls Sta 58+29.386

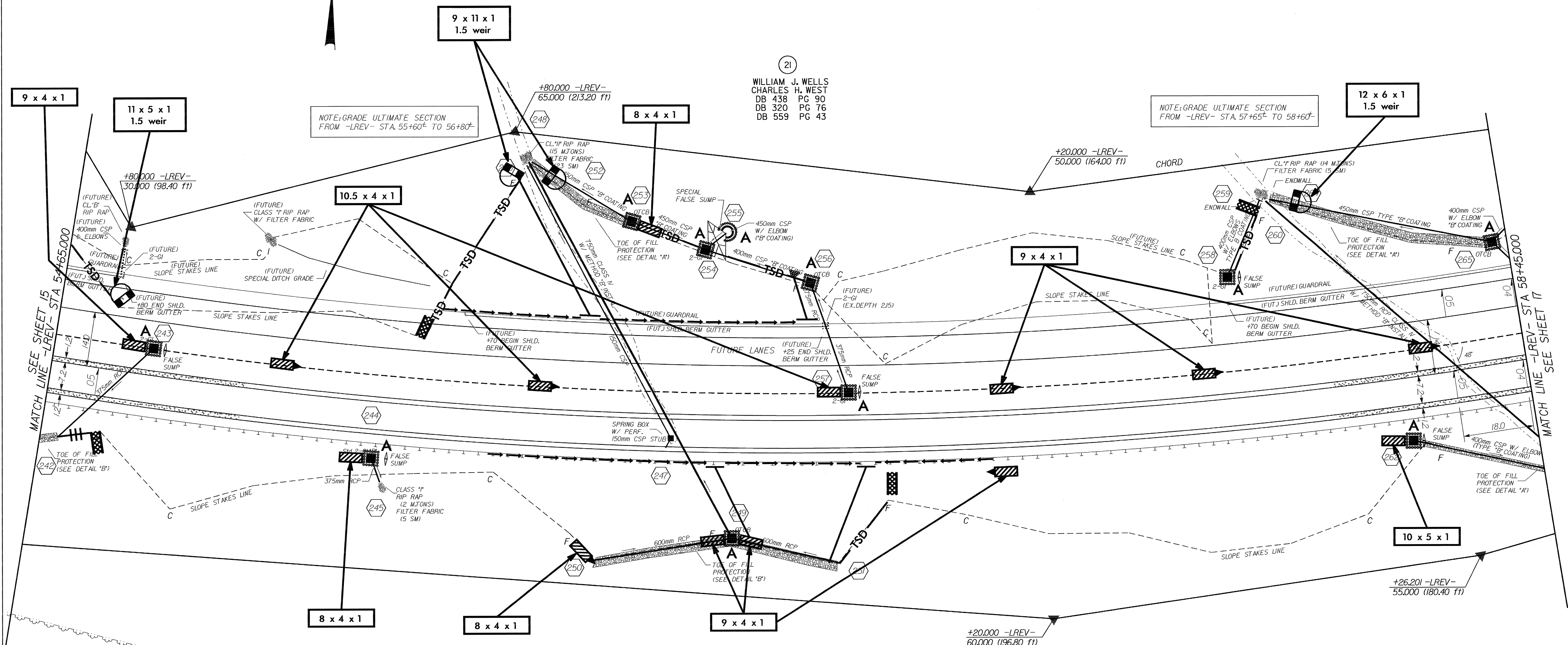
$\theta_s = 2' 12" 47.3"$ $\Delta = 26' 51" 19.4" (LT)$ $\theta_s = 2' 12" 47.3"$ $\theta_s = 1' 28" 31.5"$ $\Delta = 28' 19" 50.9" (LT)$ $\theta_s = 1' 28" 31.5"$

$L_s = 90.000$ $L = 546.053$ $L_s = 90.000$ $L_s = 60.000$ $L = 576.053$ $L_s = 60.000$

$LT = 60.005$ $T = 278.137$ $LT = 60.005$ $LT = 40.001$ $T = 294.042$ $LT = 40.001$

$ST = 30.004$ $R = 1,165.000$ $ST = 30.004$ $ST = 20.001$ $R = 1,165.000$ $ST = 20.001$

$S_e = 0.05$ $DS = 105 \text{ km/h}$

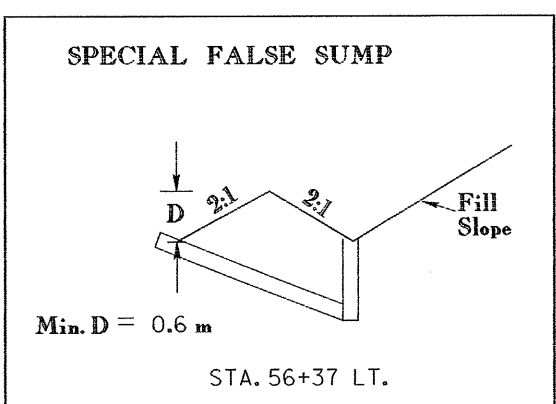
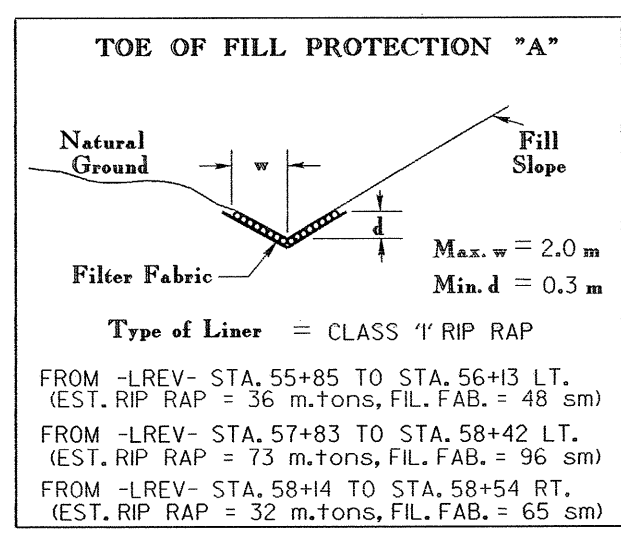
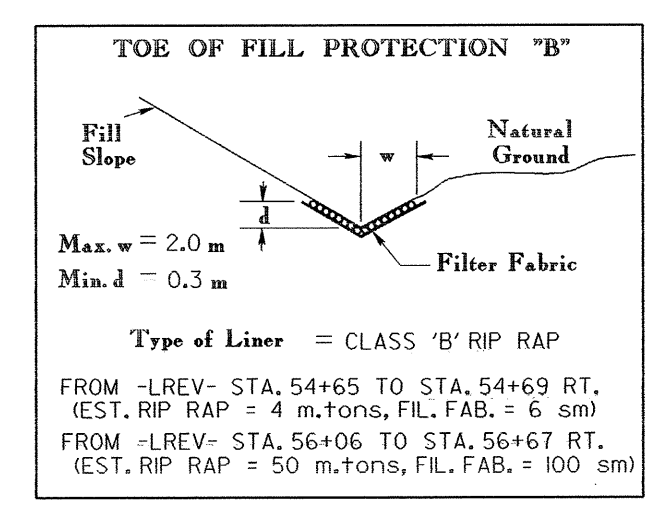


NOTE: GRADE ULTIMATE SECTION FROM -LREV- STA. 55+60 TO 56+80

NOTE: GRADE ULTIMATE SECTION FROM -LREV- STA. 57+65 TO 58+60

21
WILLIAM J. WELLS
CHARLES H. WEST
DB 438 PG 90
DB 320 PG 76
DB 559 PG 43

21
WILLIAM J. WELLS
CHARLES H. WEST
DB 438 PG 90
DB 320 PG 76
DB 559 PG 43



SEE SHEET 42 FOR -LREV- PROFILE
SEE PROFILES FOR DITCH GRADES