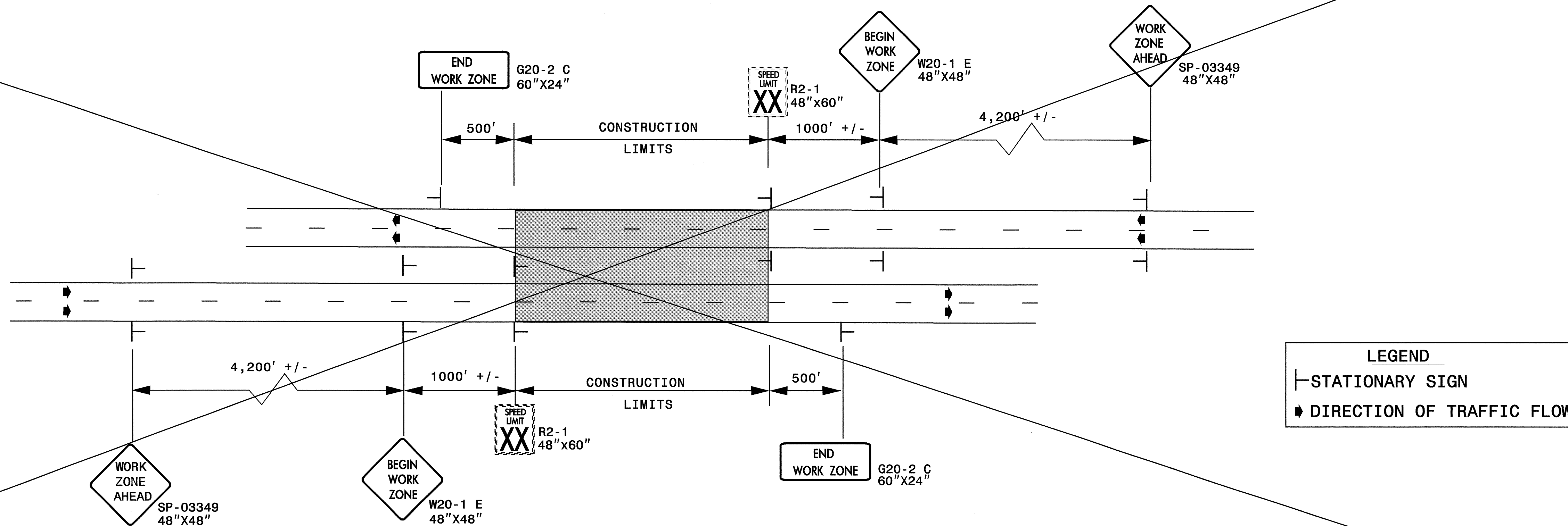


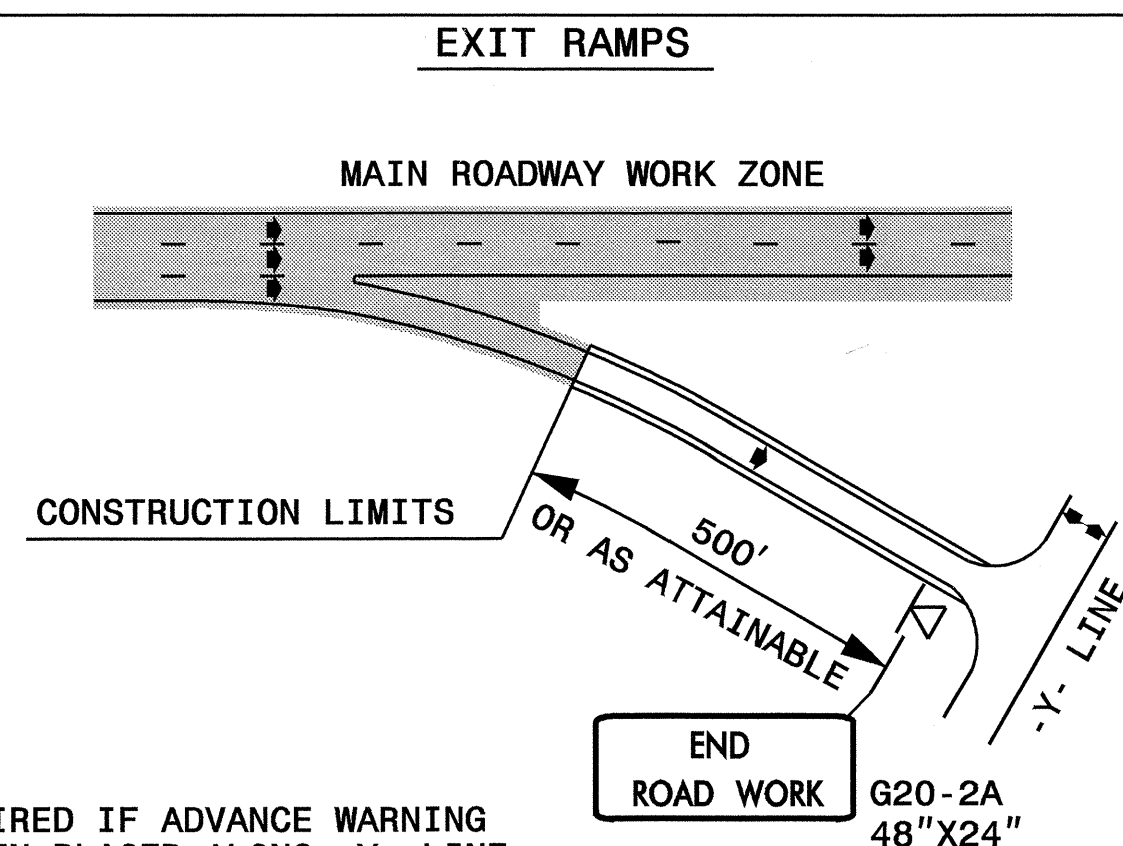
# ADVANCED WORK ZONE WARNING SIGNING FOR FREEWAYS (4 LANES OR GREATER)

PROJ. REFERENCE NO. R-4408	SHEET NO. TCP-5
-------------------------------	--------------------

## DETAIL A

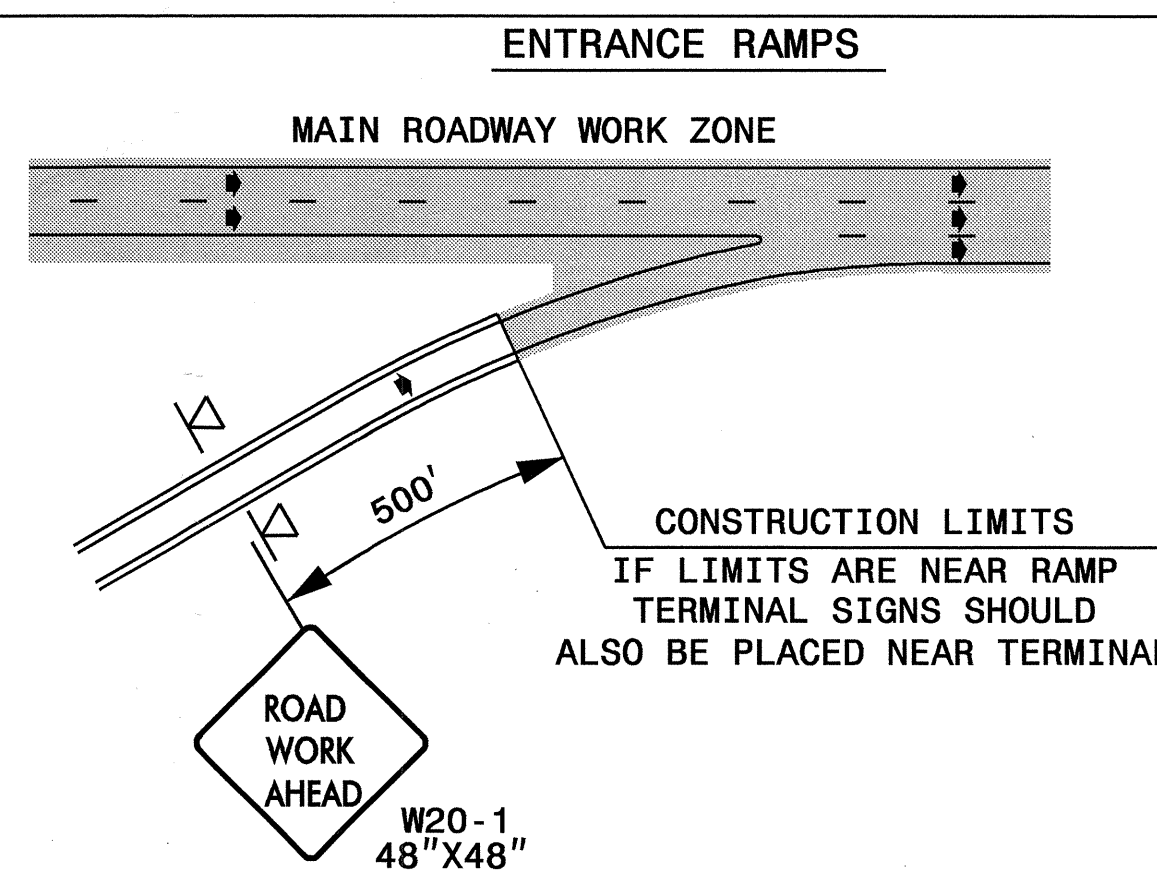


## DETAIL B

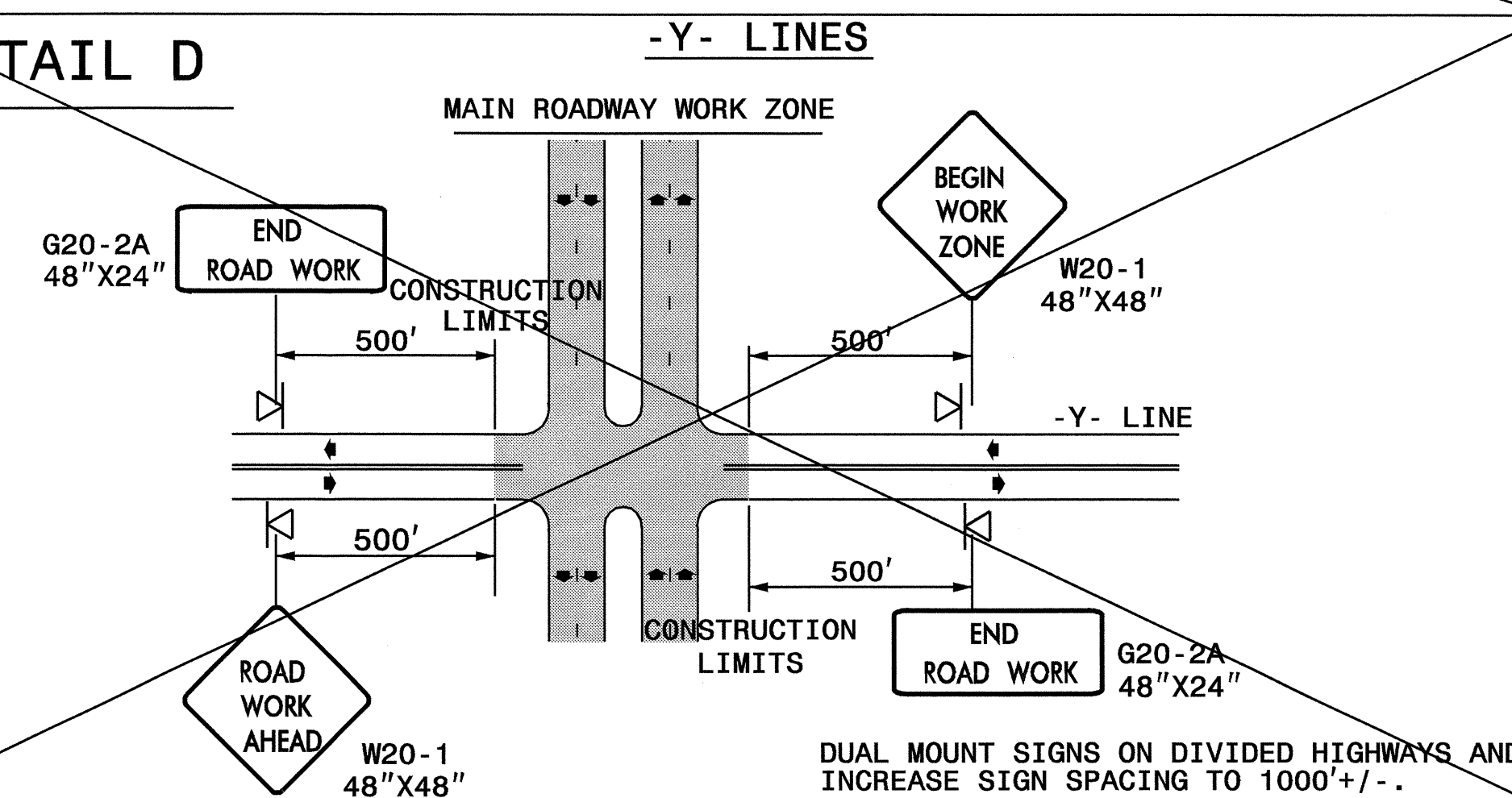


NOTE: SIGN NOT REQUIRED IF ADVANCE WARNING SIGNS HAVE BEEN PLACED ALONG -Y- LINE THAT RAMP INTERSECTS. IF CONSTRUCTION LIMITS ARE AT END OF RAMP, PLACE SIGN AT END OF RAMP.

## DETAIL C



## DETAIL D



### GENERAL NOTES

- USE FLUORESCENT ORANGE SHEETING (TYPE VII OR HIGHER) ON ALL ADVANCED WORK ZONE SIGNS.
- DO NOT INSTALL ADVANCE WARNING SIGNS MORE THAN 3 DAYS PRIOR TO BEGINNING OF WORK.
- SIGNS SHOWN ARE REQUIRED FOR WORK ZONES THAT INVOLVE SHORT-TERM DAILY MAINTENANCE TYPE OPERATIONS. ALL SIGNS ARE PORTABLE MOUNTED.
- ALL SIGN SPACING DIMENSIONS ARE APPROXIMATE, FIELD ADJUST AS NECESSARY OR AS DIRECTED.

18-NOV-2004 14:55  
I:\TCP\4408\_TCP5.dgn  
wjdccas AT TET0193479

APPROVED: <i>M. McFarland</i> DATE: <i>11/22/04</i>	ADVANCED WORK ZONE WARNING SIGNS FOR FREEWAYS (4 LANES OR GREATER)	
	SCALE: NONE	
	DATE: 8/03	
	DWG. BY: JI	
	DESIGN BY: JI	
REVIEWED BY: CBH	REVISIONS	CADD FILE: R-4408_TCP5.DGN