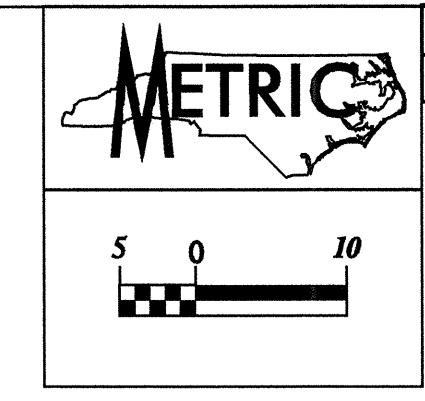


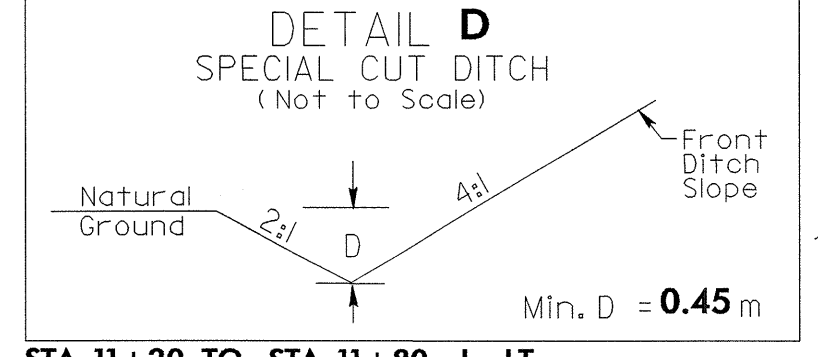
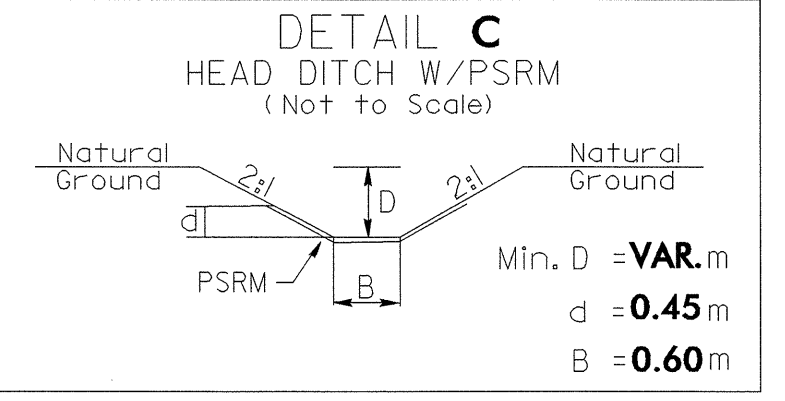
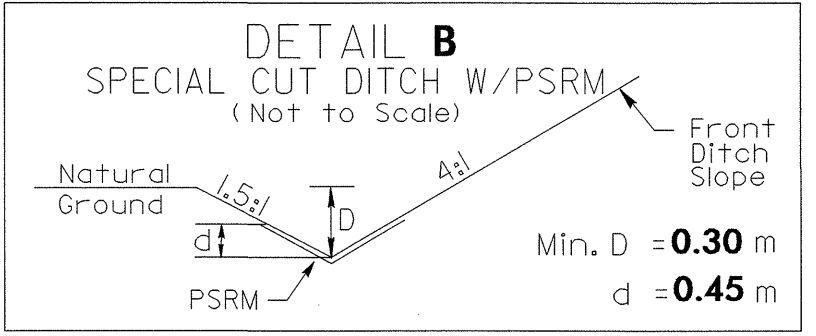
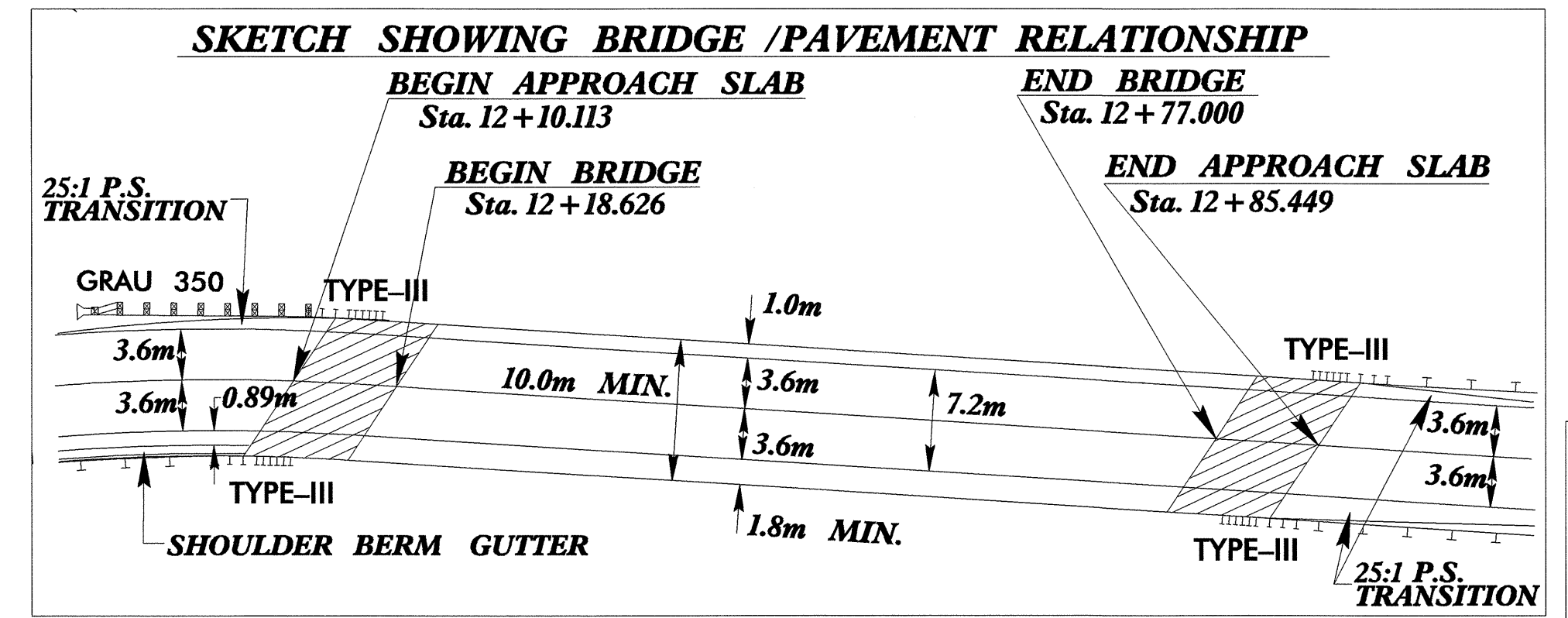
NOTES: 9-23-04 RIGHT OF WAY REVISIONS
 1) CHANGE PARCEL NUMBER 02 TO PARCEL NUMBER 01.
 1) CHANGE PARCEL NUMBER 04 TO PARCEL NUMBER 03.



PROJECT REFERENCE NO. B-3266 SHEET NO. UO-2

UTILITIES BY OTHERS

NOTE:
 ALL PROPOSED UTILITY WORK SHOWN ON THIS SHEET WILL BE DONE BY OTHERS

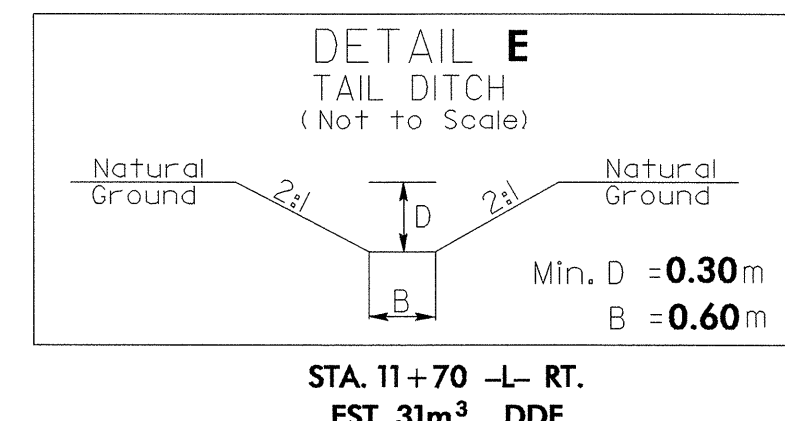
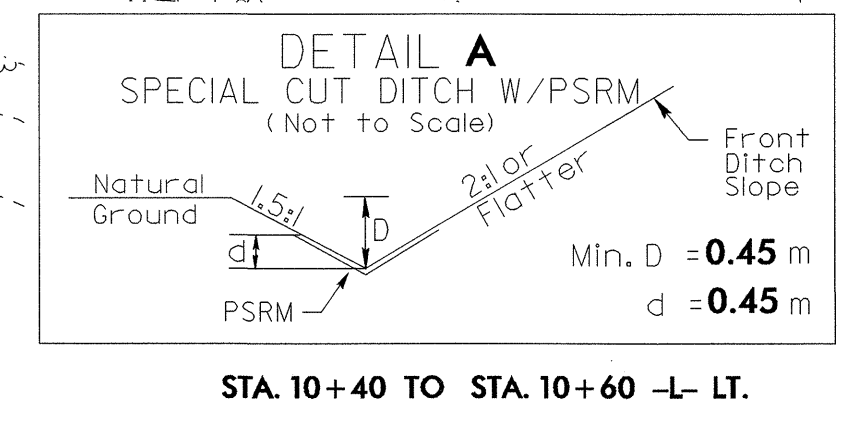
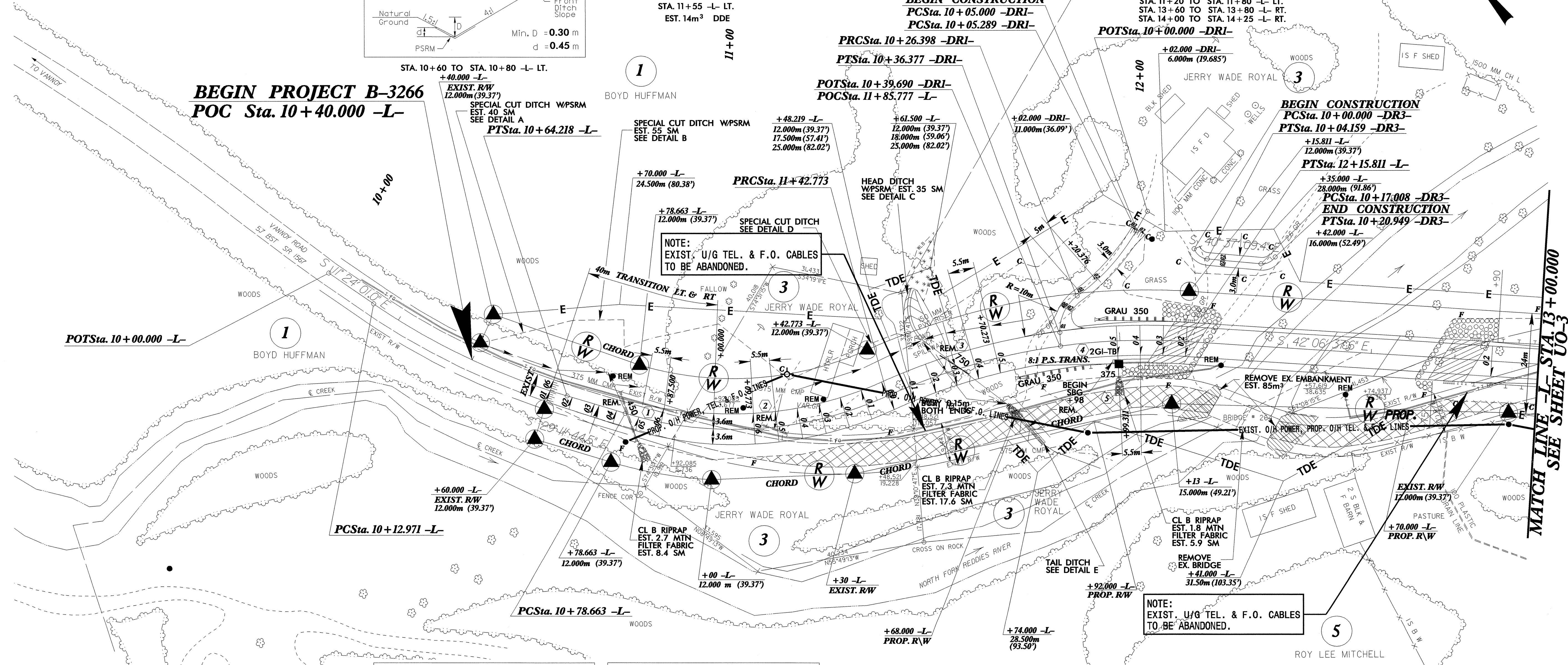


-L-
 PI Sta 10+38.802 Δ = 17° 47' 43.4" (LT) L = 51.247 T = 25.832 R = 165.000
 ★ PI Sta 11+12.146 Δ = 40° 48' 48.3" (LT) L = 64.110 T = 33.483 R = 90.000 RO = SEE PLANS SE = 0.06
 ★ PI Sta 11+80.031 Δ = 27° 53' 55.1" (RT) L = 73.038 T = 37.258 R = 150.000 RO = SEE PLANS SE = 0.05

-DRI-
 PI Sta 10+31.847 Δ = 57° 10' 33.2" (LT) L = 9.979 T = 5.449 R = 10.000 RO = SEE PLANS SE = SEE PLANS
 PI Sta 10+16.003 Δ = 24° 11' 21.0" (RT) L = 21.109 T = 10.714 R = 50.000 RO = SEE PLANS SE = SEE PLANS

BEGIN CONSTRUCTION
 PCSta. 10 + 05.000 -DRI-
 PCSta. 10 + 05.289 -DRI-

STA. 11+20 TO STA. 11+80 -L- LT.
 STA. 13+60 TO STA. 13+80 -L- RT.
 STA. 14+00 TO STA. 14+25 -L- RT.



-DR3-
 PI Sta 10+02.330 Δ = 64° 24' 16.3" (LT) L = 4.159 T = 2.330 R = 3.700 SE = NC
 PI Sta 10+19.189 Δ = 61° 01' 47.1" (LT) L = 3.941 T = 2.181 R = 3.700 SE = NC

NOTES:
 1) SEE SHEET 6 FOR -L- & -DRI- PROFILE.
 2) SEE SHEET 7 FOR -DR3- PROFILE.
 3) SEE SHEETS S-1 THRU S-7 FOR STRUCTURE PLANS.
 4) ALL DRIVEWAY RADII ARE 3m UNLESS NOTED OTHERWISE ON PLANS.

04-NOV-2004 16:36
 R:\Utilities\Wg\Proj\B-3266\04-U02.ut_pah.dgn
 Douglas Palmer