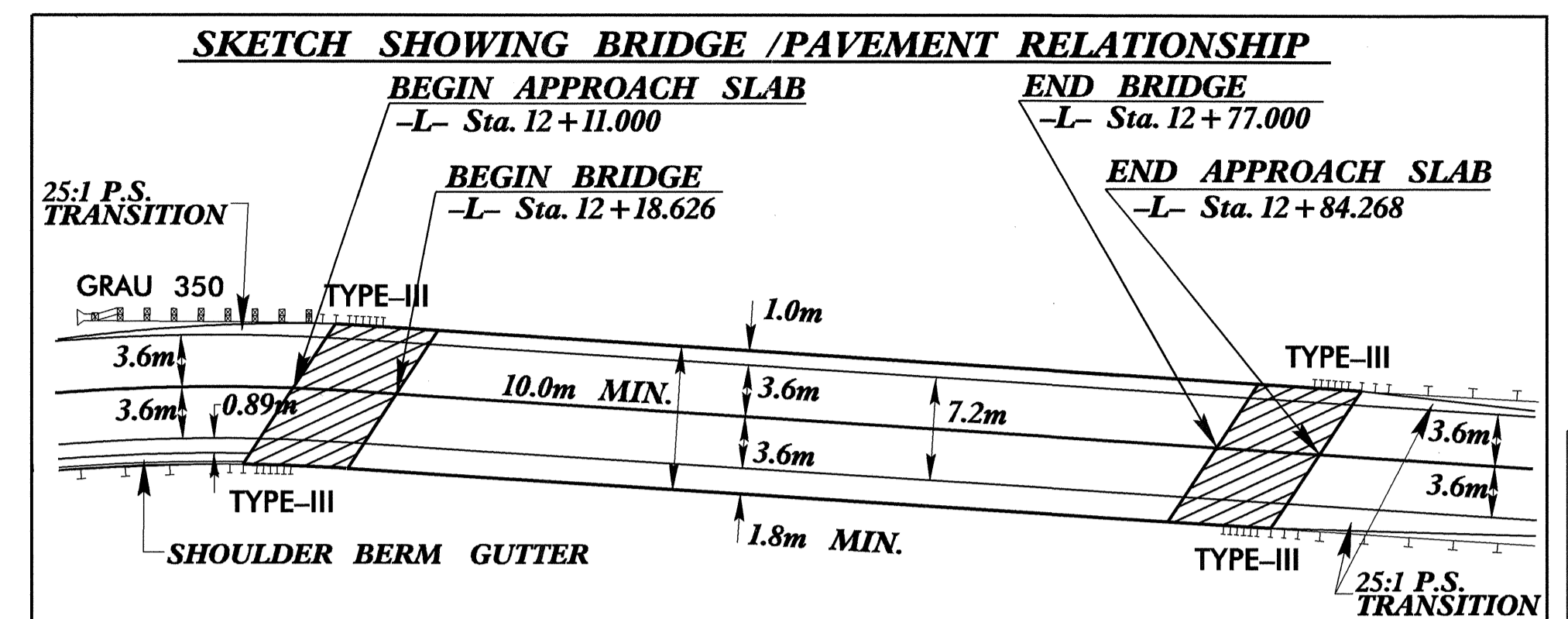


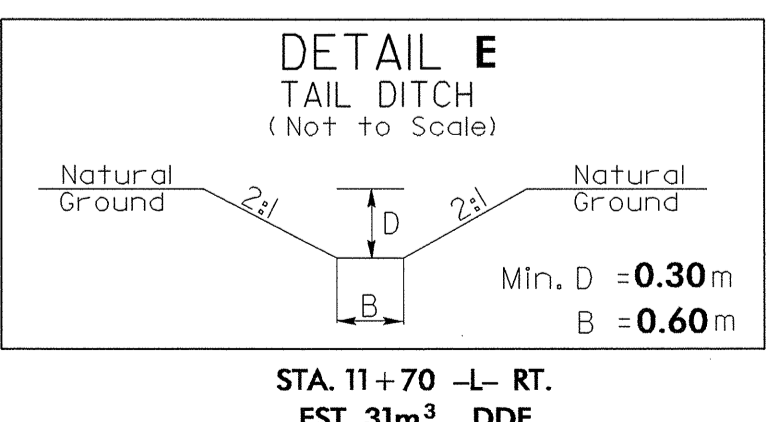
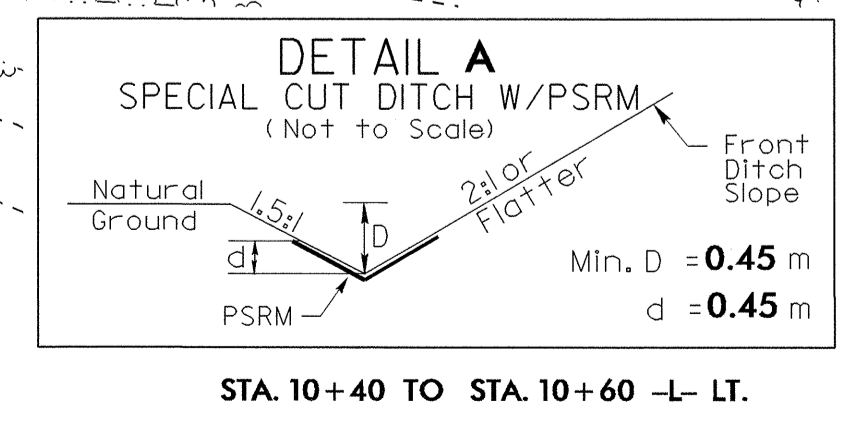
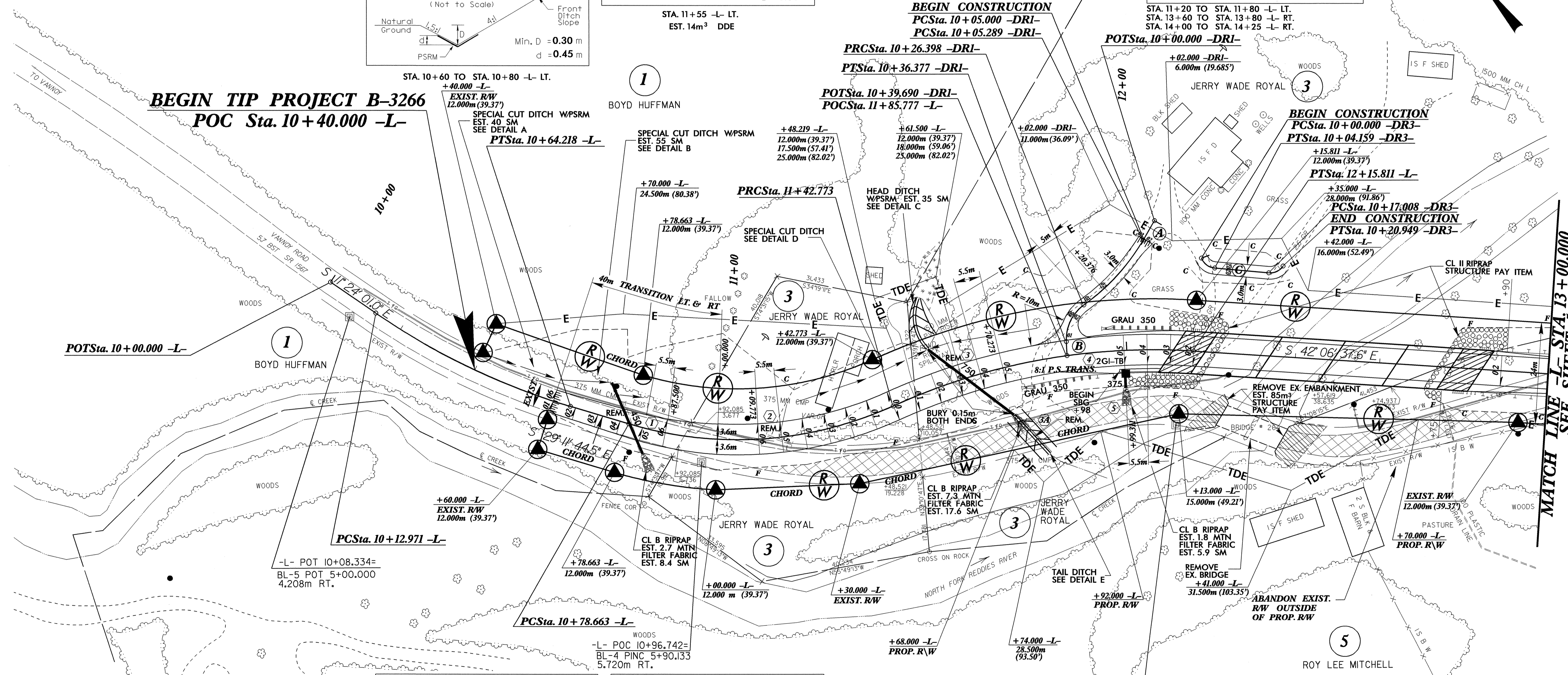
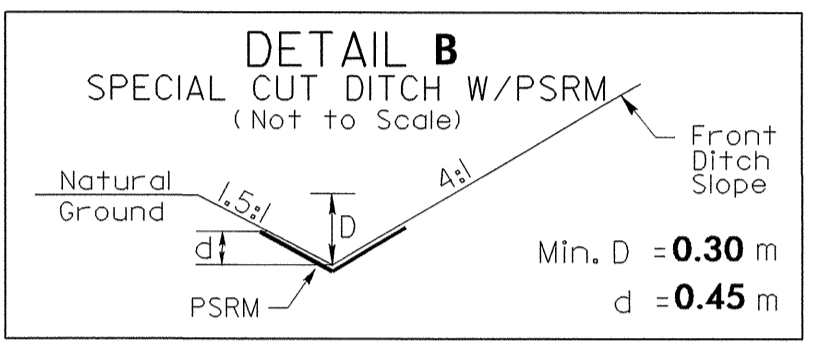
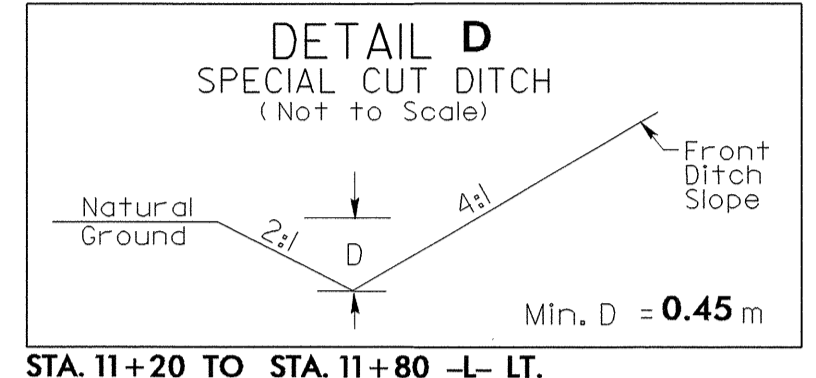
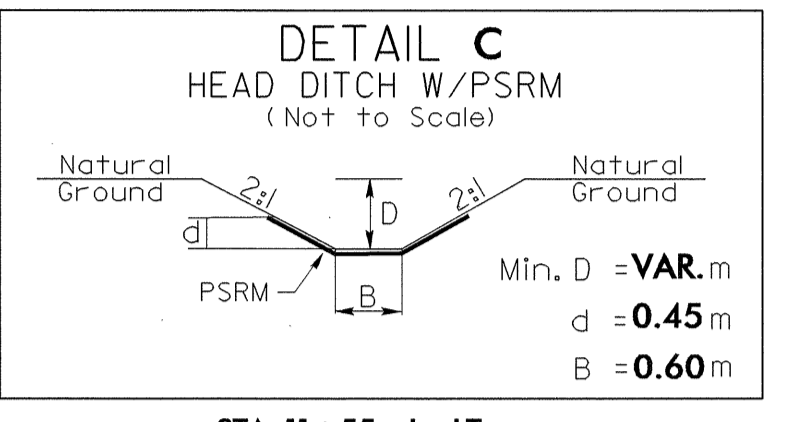
8/17/04
 14-DEC-2004 07:09
 51 1/2" x 35 1/2" 25-326-395
 1/1 1/2" x 11" 25-326-395

PROJECT REFERENCE NO.		SHEET NO.	
B-3266		4	
R/W SHEET NO.			
ROADWAY DESIGN ENGINEER	HYDRAULICS ENGINEER		
CONST. REV.			
R/W REV.			



-L-
 PI Sta 10+38.802 $\Delta = 17^\circ 47' 43.4''$ (LT) $L = 51.247$ $T = 25.832$ $R = 165.000$
 PI Sta 11+21.146 $\Delta = 40^\circ 48' 48.3''$ (LT) $L = 64.110$ $T = 33.483$ $R = 90.000$ $SE = 0.06$
 PI Sta 11+80.031 $\Delta = 27^\circ 53' 55.1''$ (RT) $L = 73.038$ $T = 37.258$ $R = 150.000$ $SE = 0.05$

-DRI-
 PI Sta 10+31.847 $\Delta = 57^\circ 10' 33.2''$ (LT) $L = 9.979$ $T = 5.449$ $R = 10.000$ $RO = \text{SEE PLANS}$ $SE = \text{SEE PLANS}$
 PI Sta 10+16.003 $\Delta = 24^\circ 11' 21.0''$ (RT) $L = 21.109$ $T = 10.714$ $R = 50.000$ $RO = \text{SEE PLANS}$ $SE = \text{SEE PLANS}$
 (A) S 74° 24' 19.8" W
 (B) S 41° 25' 21.6" W



-DR3-
 PI Sta 10+02.330 $\Delta = 64^\circ 24' 16.3''$ (LT) $L = 41.59$ $T = 2.330$ $R = 3.700$ $SE = \text{NC}$
 PI Sta 10+19.189 $\Delta = 61^\circ 01' 47.1''$ (LT) $L = 3.941$ $T = 2.181$ $R = 3.700$ $SE = \text{NC}$
 (C) S 40° 37' 09.4" E

- NOTES:**
- SEE SHEET 6 FOR -L- & -DRI- PROFILE.
 - SEE SHEET 7 FOR -DR3- PROFILE.
 - SEE SHEETS S-1 THRU S-26 FOR STRUCTURE PLANS.
 - ALL DRIVEWAY RADII ARE 3m UNLESS NOTED OTHERWISE ON PLANS.

MATCH LINE -L- STA. 13+00.000 SEE SHEET 5