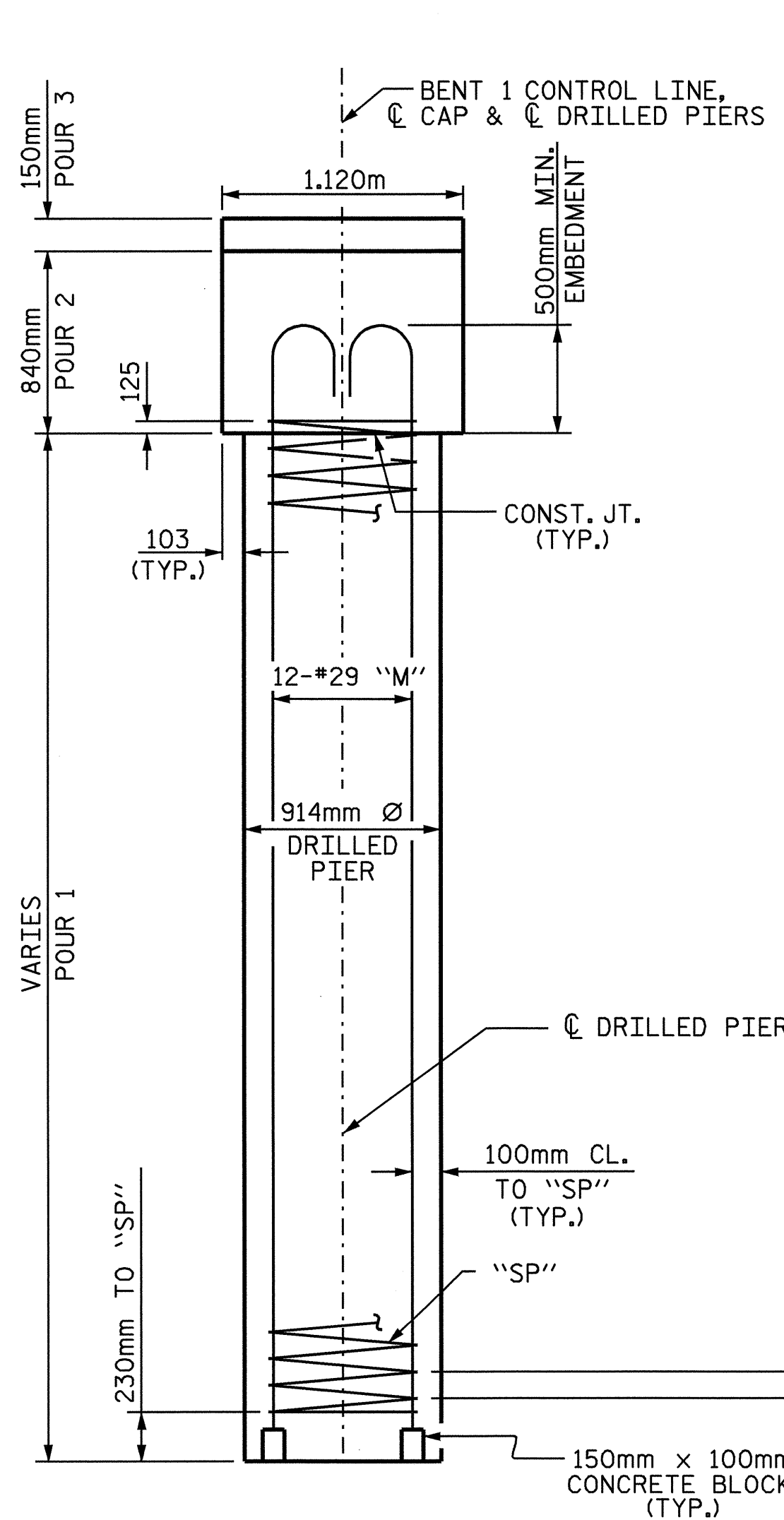


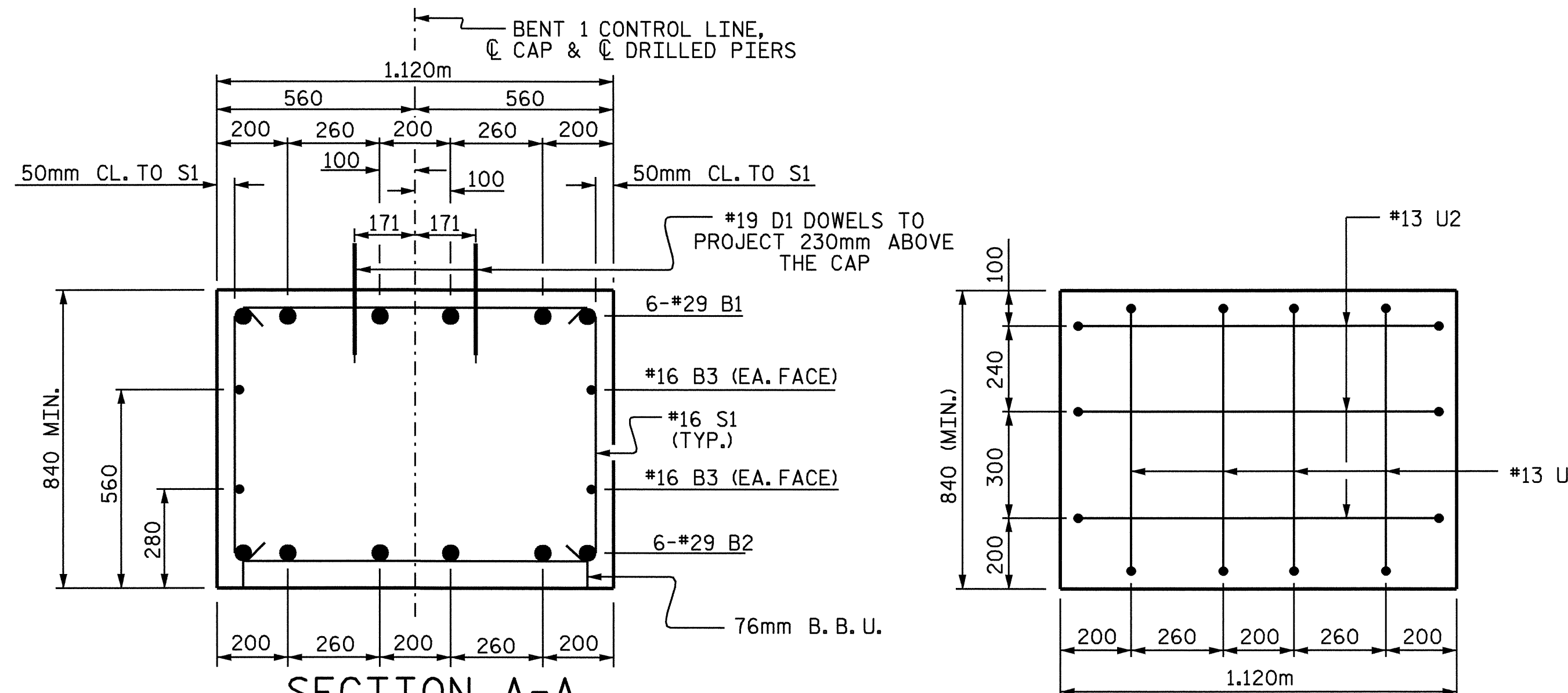
PLAN OF DRILLED PIERS

(DIMENSIONS AND REINFORCING STEEL ARE TYPICAL FOR EACH DRILLED PIER)



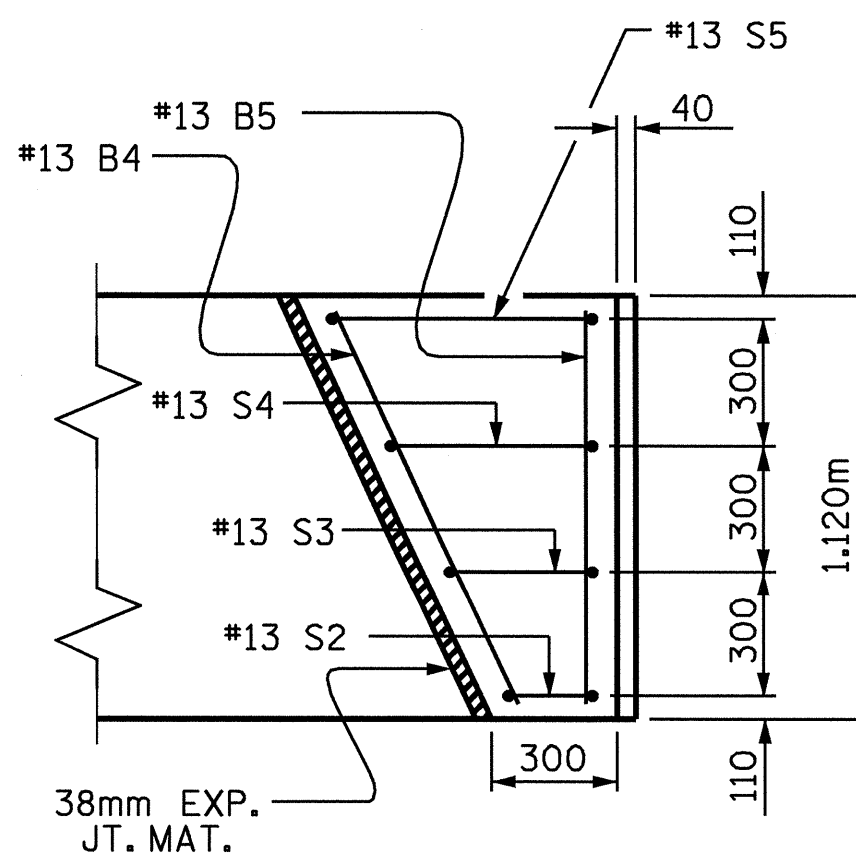
END ELEVATION

(TYP. EA. DRILLED PIER)



SECTION A-A

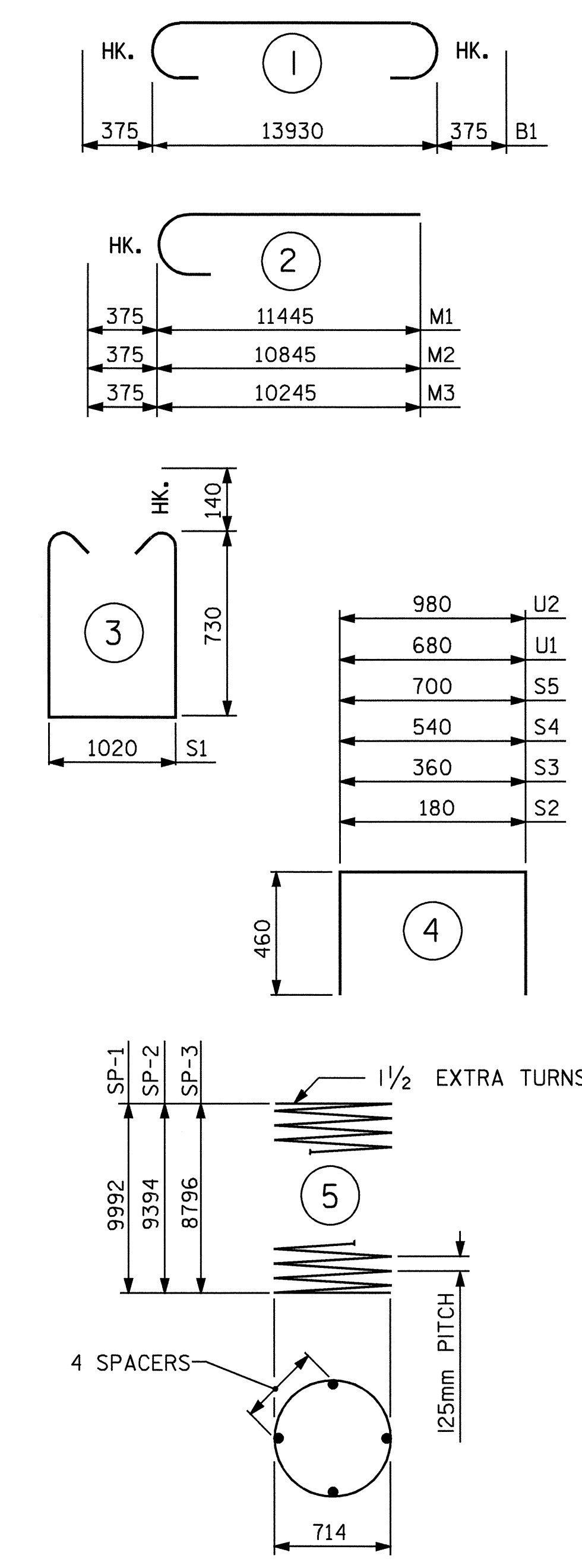
VIEW X-X



LATERAL GUIDE DETAIL

(EACH END SIMILAR)

BAR TYPES



BILL OF MATERIAL

BENT 1

BAR	NO.	SIZE	TYPE	LENGTH	WEIGHT
B1	6	#29	1	14680	446
B2	6	#29	STR	13980	424
B3	4	#16	STR	13980	87
B4	2	#13	STR	1120	2
B5	2	#13	STR	1020	2
D1	48	#19	STR	460	49
M1	12	#29	2	11820	718
M2	12	#29	2	11220	681
M3	12	#29	2	10620	645
S1	48	#16	3	2760	206
S2	2	#13	4	1100	2
S3	2	#13	4	1280	3
S4	2	#13	4	1460	3
S5	2	#13	4	1620	3
U1	8	#13	4	1600	13
U2	6	#13	4	1900	12

REINFORCING STEEL KG. 3296

SP-1	1	**	5	179,720	279
SP-2	1	**	5	168,760	262
SP-3	1	**	5	157,800	245

SPIRAL COLUMN REINFORCING STEEL KG. 786

CLASS "A" CONCRETE BREAKDOWN				
POUR #2 (CAP)	M ³	13.2		
POUR #3 (LATERAL GUIDES)	M ³	0.2		
TOTAL	M ³	13.4		

DRILLED PIER QUANTITIES

DRILLED PIER CONCRETE		
POUR #1 (DRILLED PIERS)	M ³	18.7
914mm Ø DRILLED PIER IN SOIL	METERS	23.2
914mm Ø DRILLED PIER NOT IN SOIL	METERS	5.3
PERMANENT STEEL CASING FOR 914mm Ø DRILLED PIER	METERS	18.9
CROSSHOLE SONIC LOGGING	EA.	1
CSL TUBES	METERS	124.2

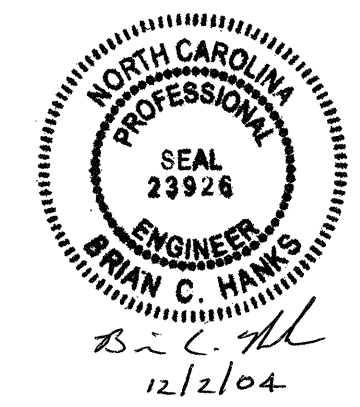
* THE "SP" SPIRAL REINFORCING STEEL SHALL BE W31 OR D-31 COLD DRAWN WIRE OR #16 PLAIN OR DEFORMED BAR.

PROJECT NO. **B-3266**
WILKES COUNTY
 STATION: **12+48.000 -L-**

SHEET 2 OF 2

STATE OF NORTH CAROLINA
 DEPARTMENT OF TRANSPORTATION
 RALEIGH

SUBSTRUCTURE BENT 1



REVISIONS						SHEET NO.
NO.	BY:	DATE:	NO.	BY:	DATE:	S-15
1			3			TOTAL SHEETS 26
2			4			

DRAWN BY: **J.L. WALTON** DATE: **6/2/04**
 CHECKED BY: **D.G. ELY** DATE: **8/5/04**