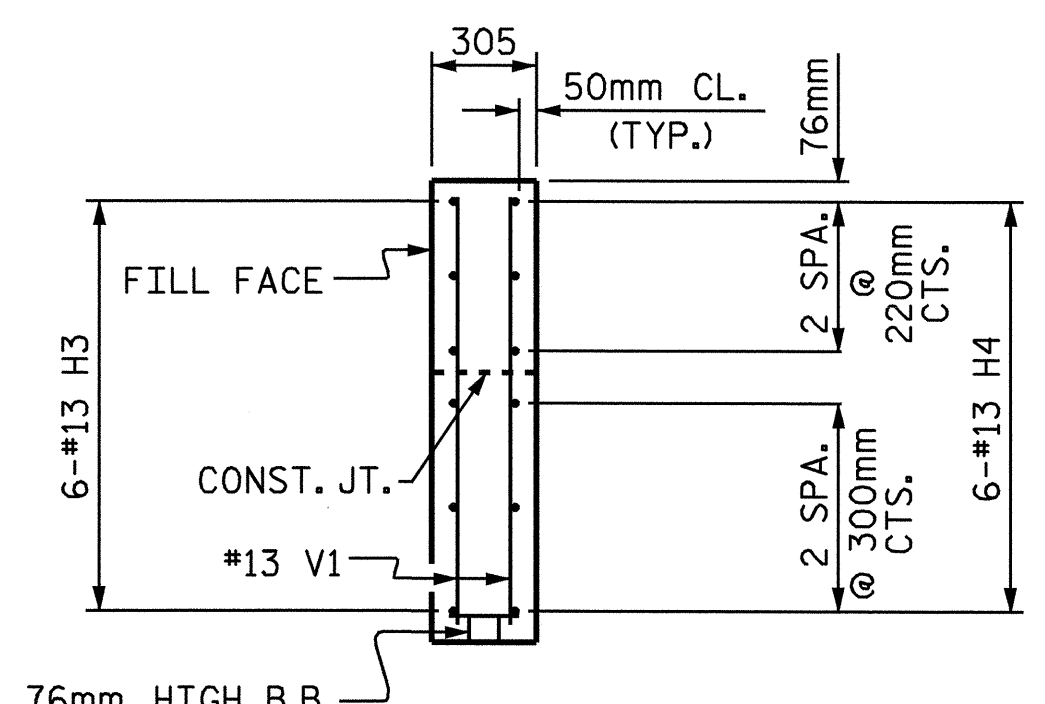
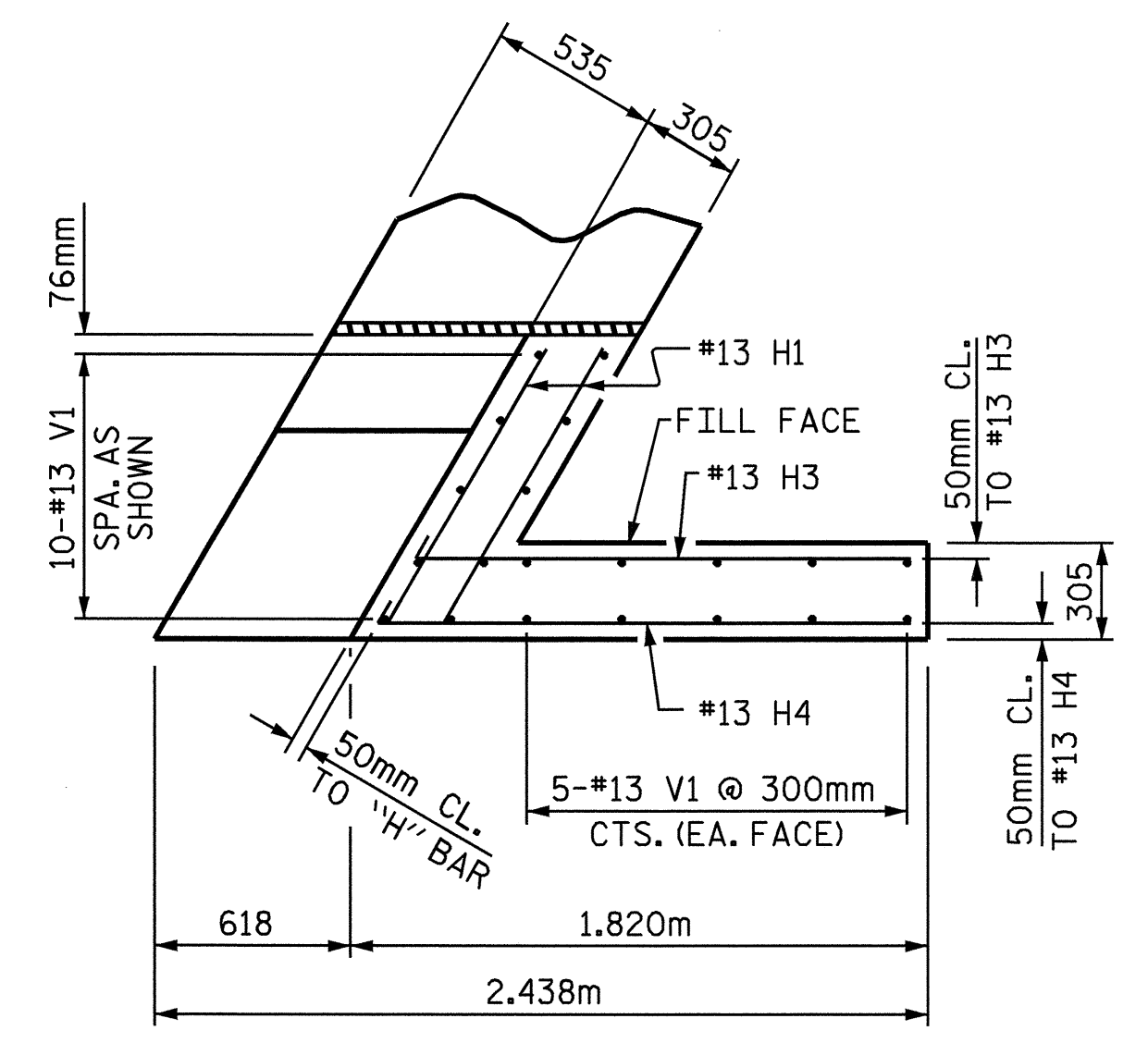


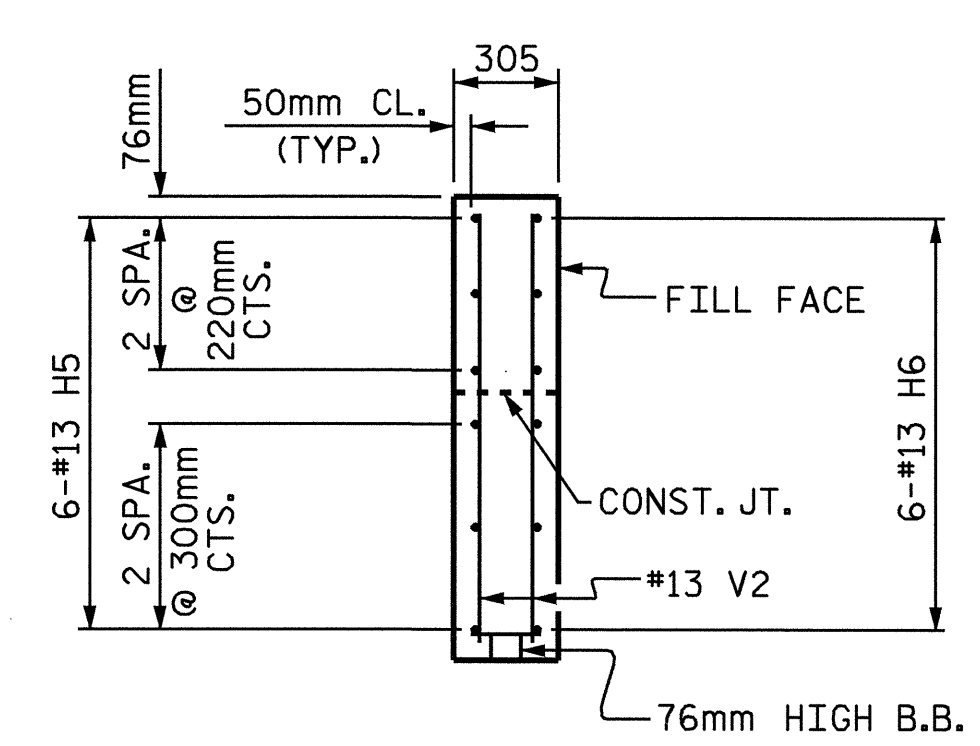
PLAN W1



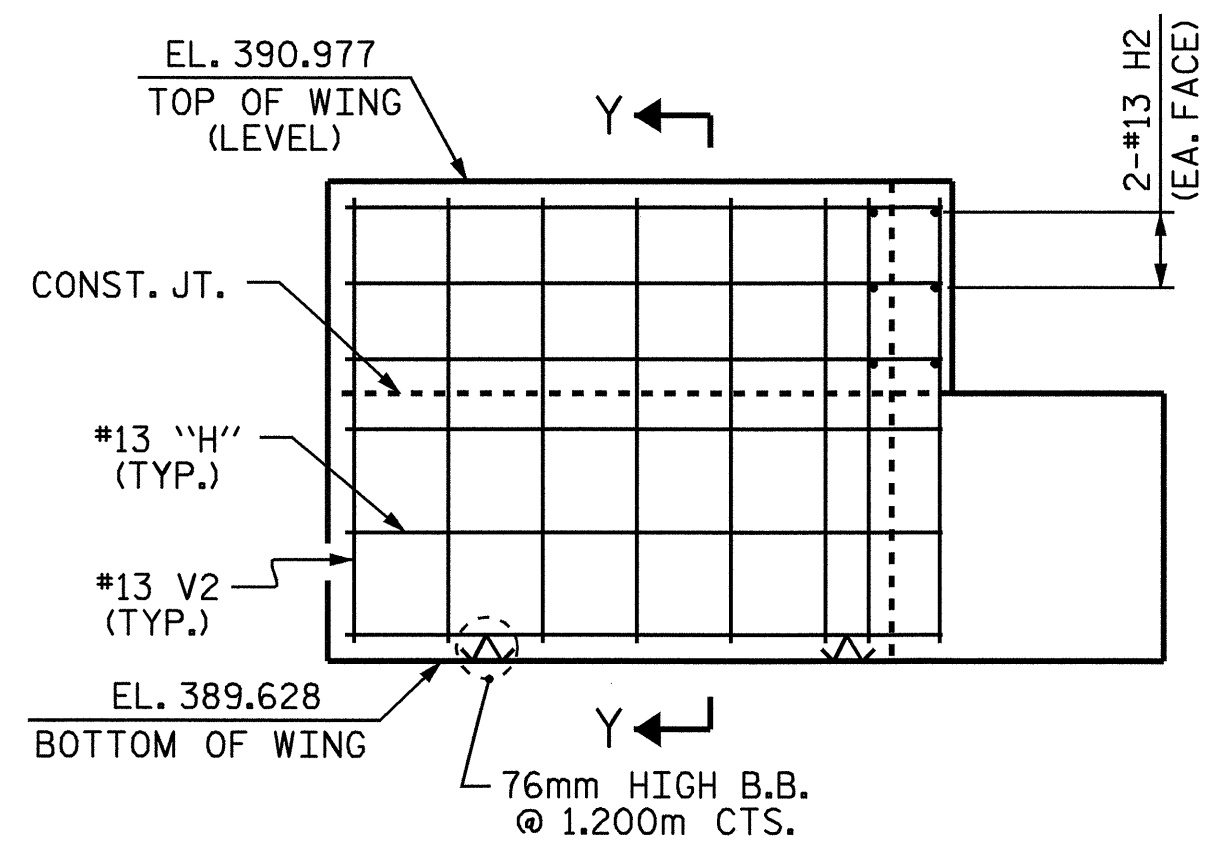
SECTION X-X



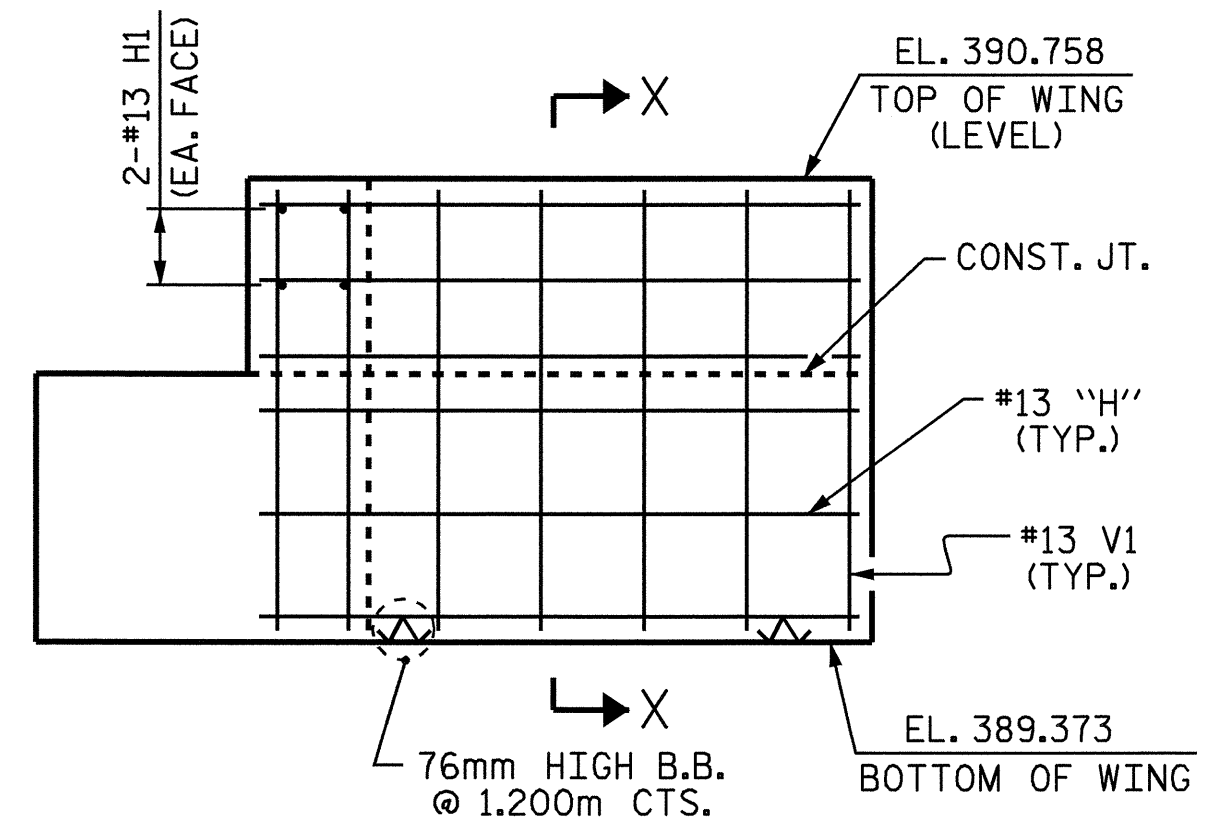
PLAN W2



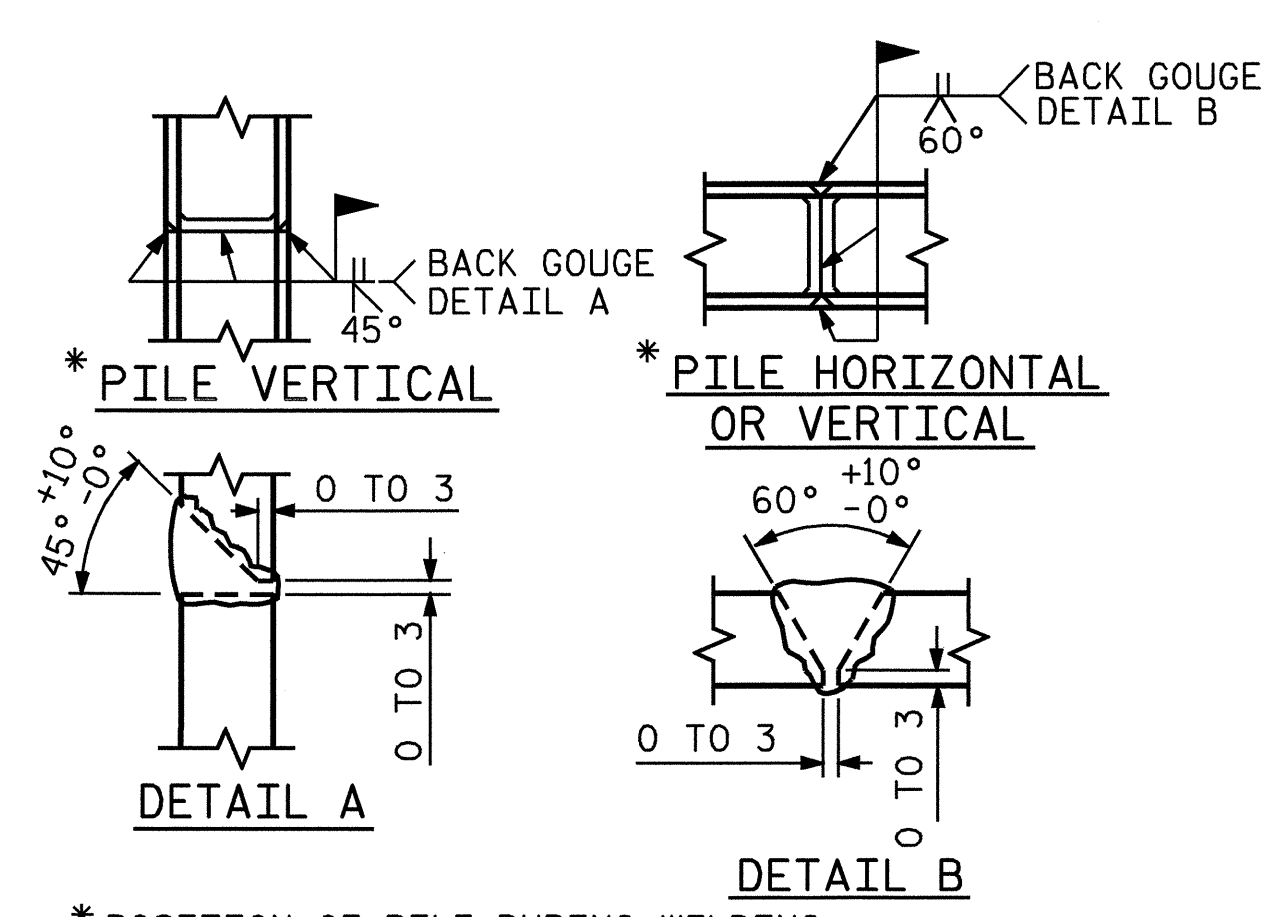
SECTION Y-Y



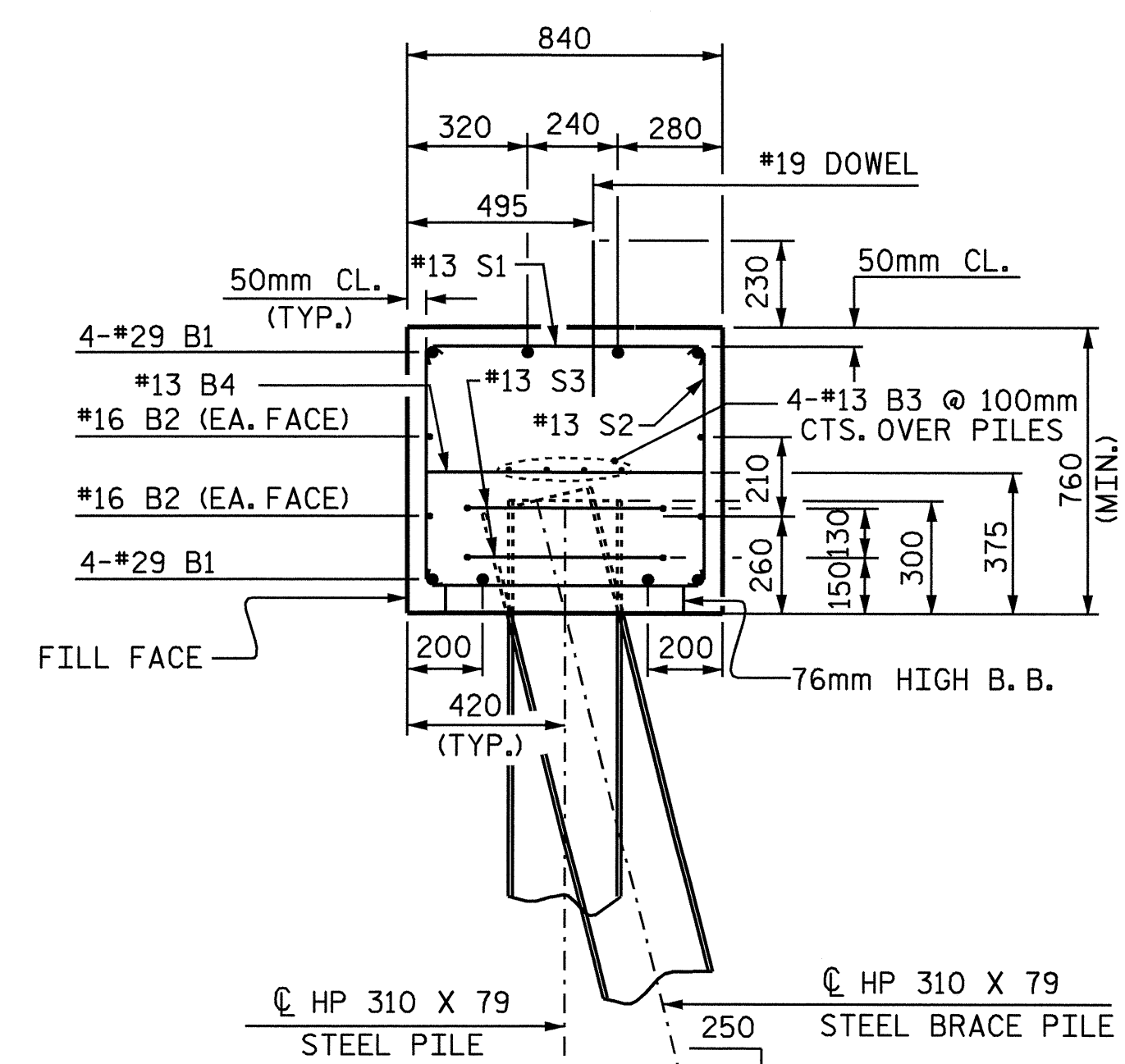
ELEVATION W1



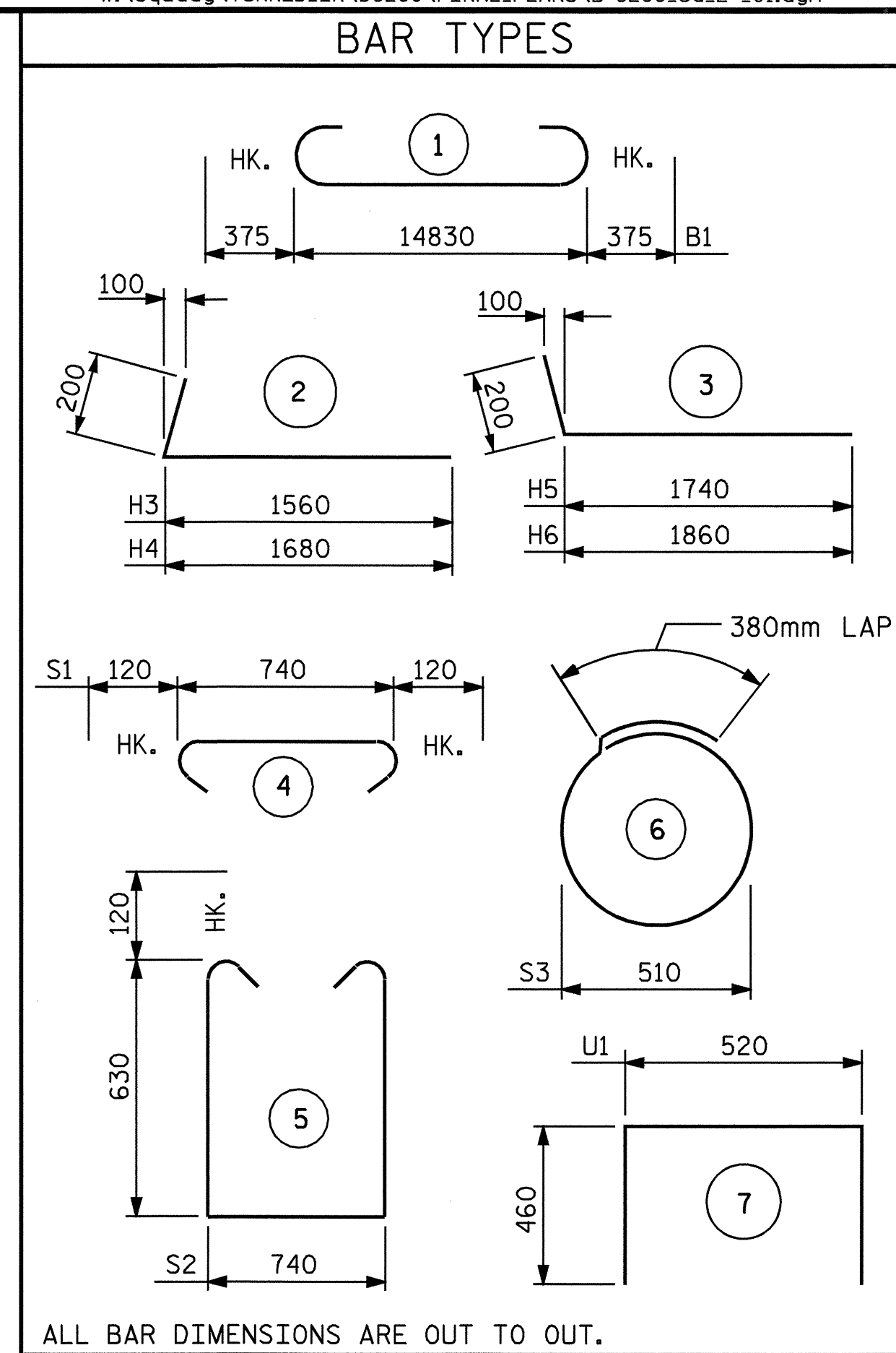
ELEVATION W2



PILE SPLICE DETAILS

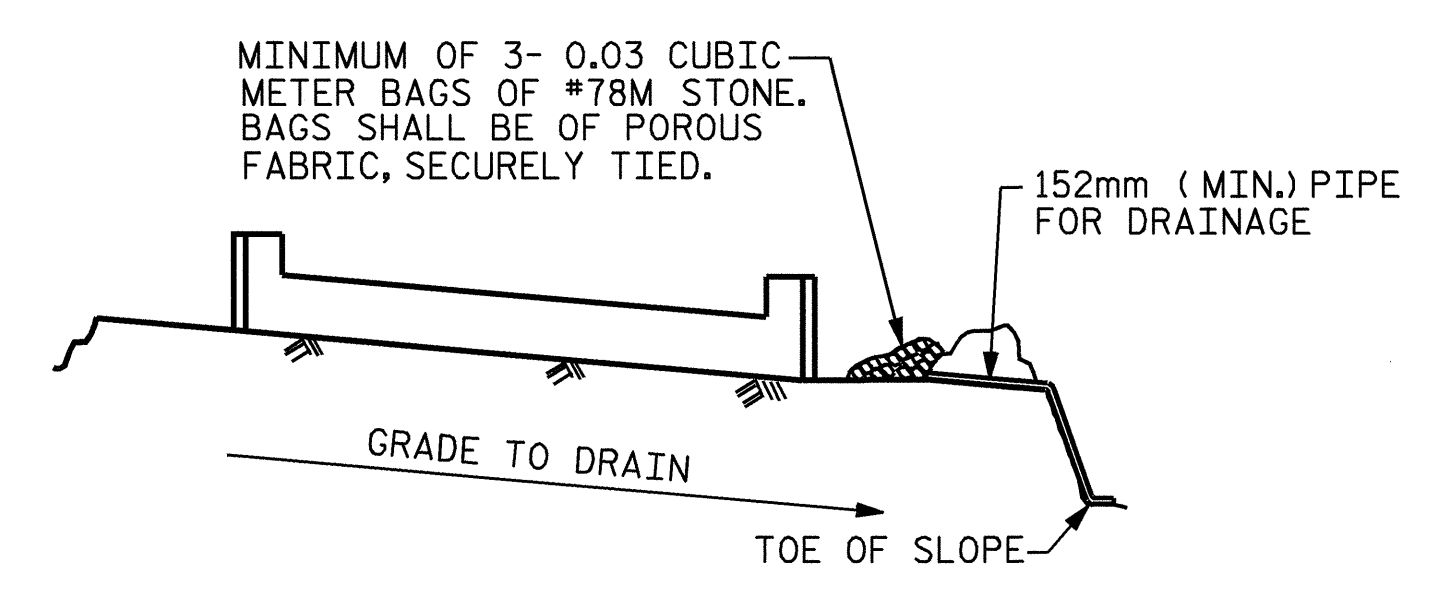


SECTION A-A



ALL BAR DIMENSIONS ARE OUT TO OUT.

BILL OF MATERIAL					
END BENT NO. 2					
BAR	NO.	SIZE	TYPE	LENGTH	WEIGHT
B1	8	#29		15580	631
B2	4	#16	STR	14880	92
B3	8	#13	STR	7820	62
B4	13	#13	STR	740	10
D1	24	#19	STR	460	25
H1	4	#13	STR	1000	4
H2	4	#13	STR	980	4
H3	6	#13	2	1760	11
H4	6	#13	2	1880	11
H5	6	#13	3	1940	12
H6	6	#13	3	2060	12
S1	50	#13	4	980	49
S2	50	#13	5	2240	111
S3	18	#13	6	1980	35
U1	4	#13	7	1440	6
V1	20	#13	STR	1280	26
V2	22	#13	STR	1240	27
REINFORCING STEEL				kg	1128
CLASS A CONCRETE BREAKDOWN					
POUR #1 (CAP & LOWER WINGS)				M3	10.2
POUR #2 (WINGS)				M3	0.9
POUR #3 (LATERAL GUIDE)				M3	0.2
TOTAL				M3	11.3
HP 310 X 79 STEEL PILES				METERS	45.0
NO. 9					
STEEL PILE POINTS				EA.	9

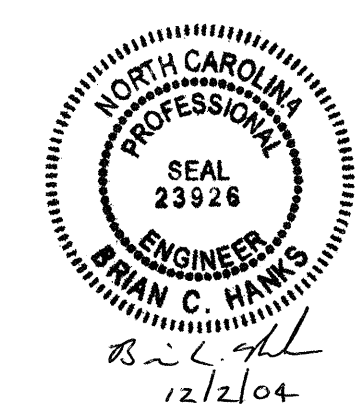


BAGGED STONE AND PIPE SHALL BE PLACED IMMEDIATELY AFTER COMPLETION OF END BENT EXCAVATION. PIPE MAY BE EITHER CONCRETE, CORRUGATED STEEL, CORRUGATED ALUMINUM ALLOY, OR CORRUGATED PLASTIC. PERFORATED PIPE WILL NOT BE ALLOWED.

BAGGED STONE SHALL REMAIN IN PLACE UNTIL THE ENGINEER DIRECTS THAT IT BE REMOVED. THE CONTRACTOR SHALL REMOVE AND DISPOSE OF SILT ACCUMULATIONS AT BAGGED STONE WHEN SO DIRECTED BY THE ENGINEER. BAGS SHALL BE REMOVED AND REPLACED WHENEVER THE ENGINEER DETERMINES THAT THEY HAVE DETERIORATED AND LOST THEIR EFFECTIVENESS.

NO SEPARATE PAYMENT WILL BE MADE FOR THIS WORK AND THE ENTIRE COST OF THIS WORK SHALL BE INCLUDED IN THE UNIT CONTRACT PRICE BID FOR THE SEVERAL PAY ITEMS.

TEMPORARY DRAINAGE AT END BENT



PROJECT NO. B-3266
WILKES COUNTY
 STATION: 12+48.000 -L-

SHEET 2 OF 2

STATE OF NORTH CAROLINA DEPARTMENT OF TRANSPORTATION RALEIGH					
SUBSTRUCTURE END BENT 2					
REVISIONS					SHEET NO.
NO.	BY:	DATE:	NO.	BY:	DATE:
1			3		
2			4		
					S-21
					TOTAL SHEETS
					26