

UTILITIES BY OTHERS

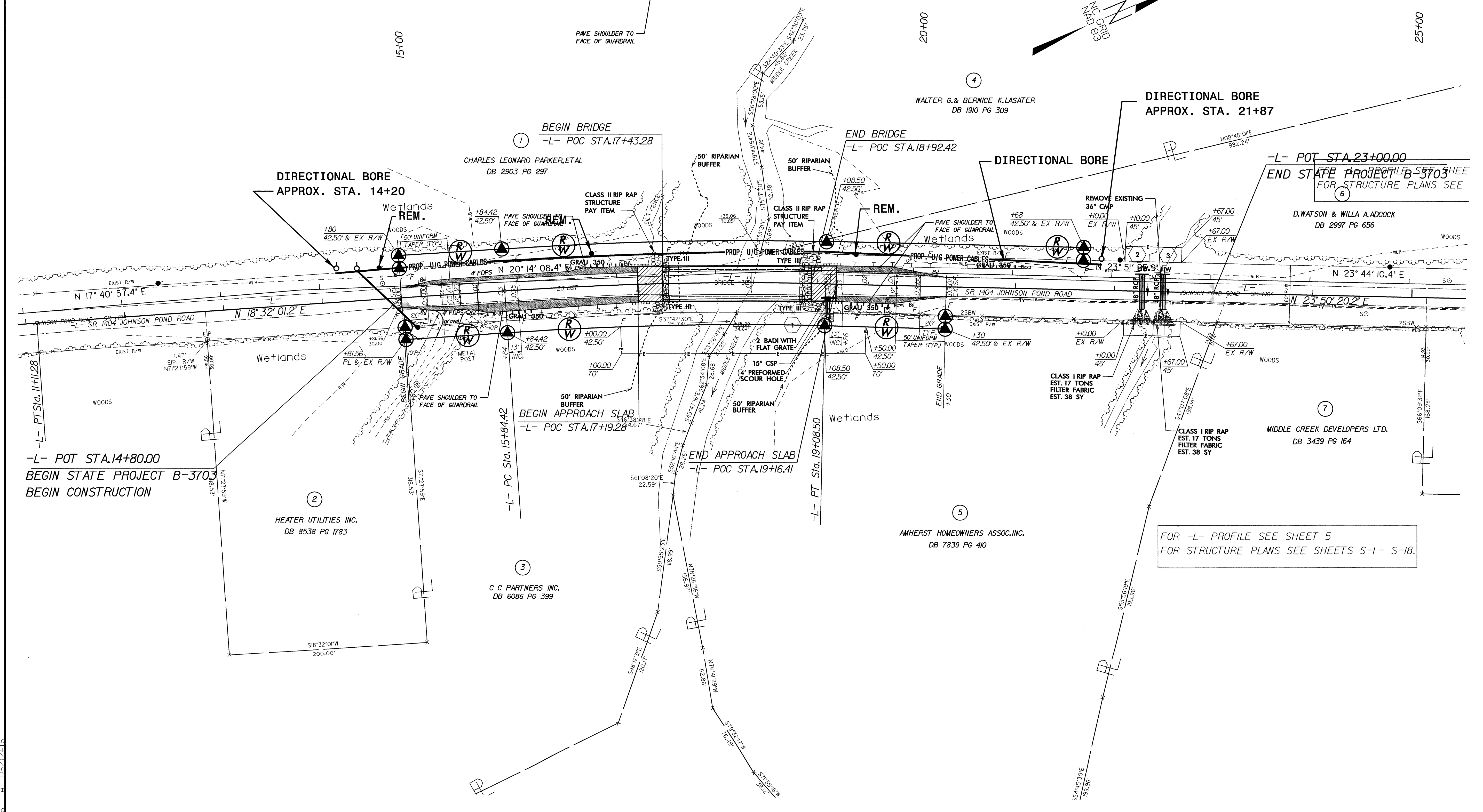
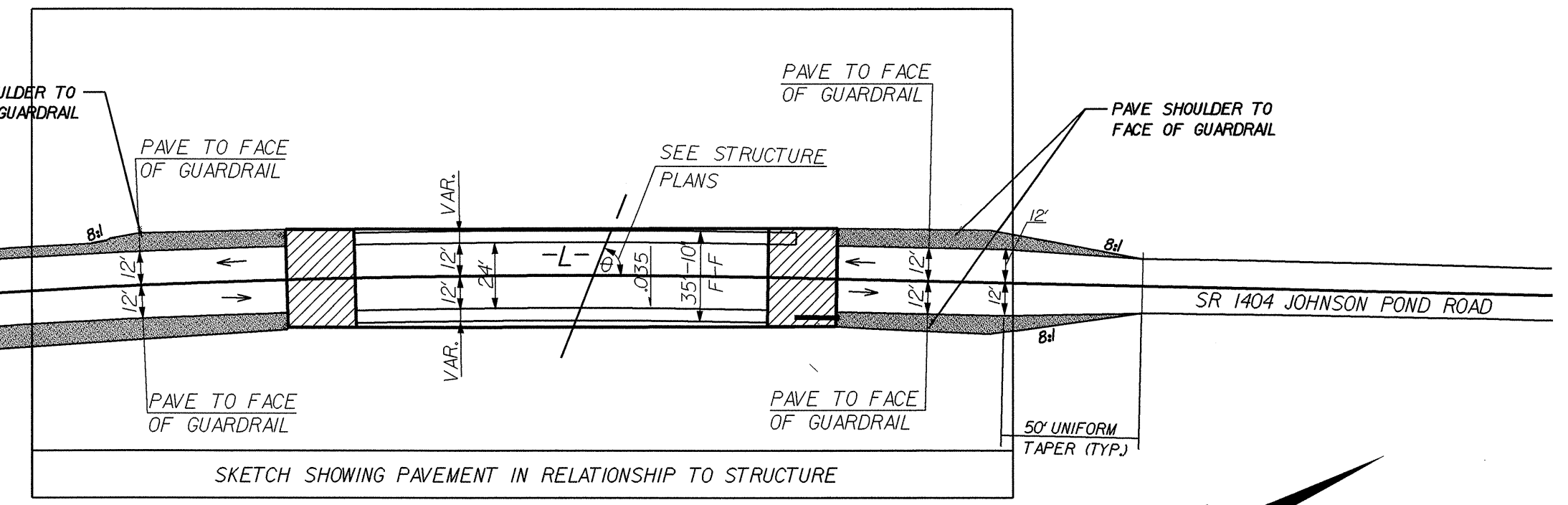
NOTE:
ALL PROPOSED UTILITY WORK SHOWN ON THIS SHEET WILL BE DONE BY OTHERS

DATUM DESCRIPTION
THE LOCALIZED COORDINATE SYSTEM DEVELOPED FOR THIS PROJECT IS BASED ON THE STATE PLANE COORDINATES ESTABLISHED BY NCDOT FOR MONUMENT "B3703-1" WITH NAD 1983 STATE PLANE GRID COORDINATES OF NORTHING: 6905892255(ft) EASTING: 20779803432(ft) THE AVERAGE COMBINED GRID FACTOR USED ON THIS PROJECT (GROUND TO GRID) IS: 0.99988555 THE N.C. LAMBERT GRID BEARING AND LOCALIZED HORIZONTAL GROUND DISTANCE FROM "B3703-1" TO "L" STATION 14+80.00 IS S 36° 44' 37.4" W 102.25' HORIZONTAL DISTANCE S 36° 44' 37.4" W 102.25' HORIZONTAL DISTANCE ALL LINEAR DIMENSIONS ARE LOCALIZED HORIZONTAL DISTANCES VERTICAL DATUM USED IS NAVD88

PI Sta 10+69.25
 $\Delta = 4' 49'' 06.5''$ (RT)
D = 5' 43'' 46.5"
L = 84.0'
T = 42.0'
R = 1,000.00'

PI Sta 17+46.57
 $\Delta = 5' 13'' 13.3''$ (RT)
D = 1' 38'' 13.3"
L = 324.08'
T = 162.16'
R = 85,500.00'

SE = 035° USED DUE TO DRAINAGE SPREAD ACROSS BRIDGE.



-L- POT STA. 14+80.00
BEGIN STATE PROJECT B-3703
BEGIN CONSTRUCTION

FOR -L- PROFILE SEE SHEET 5
FOR STRUCTURE PLANS SEE SHEETS S-1 - S-18.

END STATE PROJECT B-3703
FOR STRUCTURE PLANS SEE SHEET 6

8/17/99

30-NOV-2004 14:11 Lt:\Projects\B3703\ut_4_L01\psh.dgn
R:\Utilities\B3703\ut_4_L01\psh.dgn
D:\AT\Des\12416