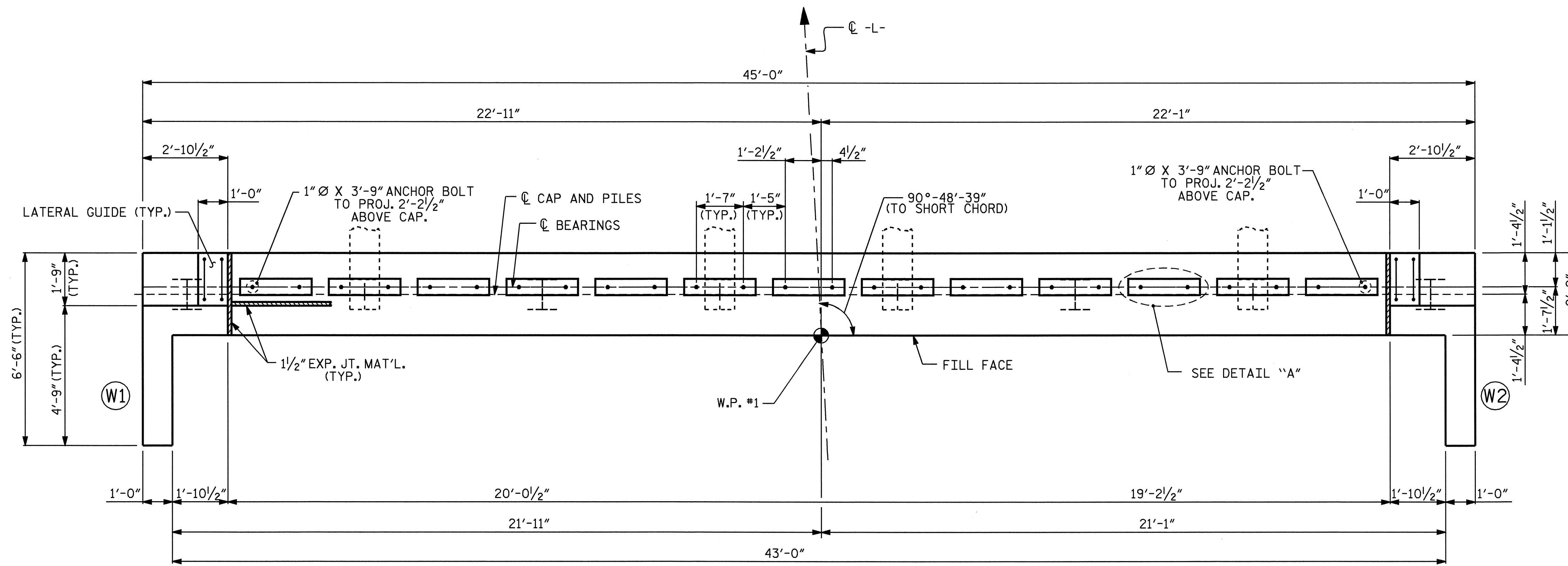


NOTES

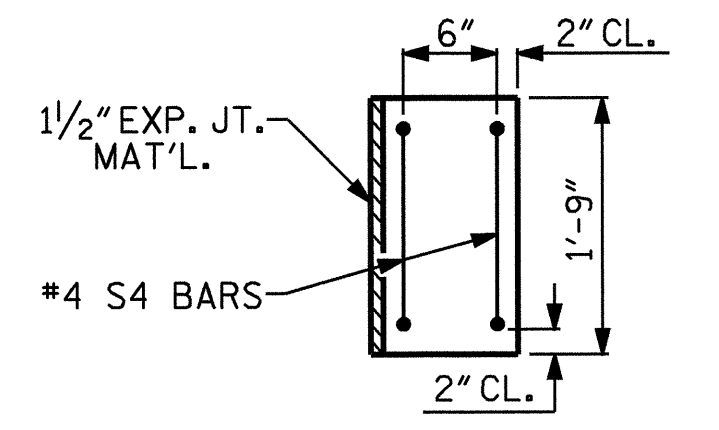
STIRRUPS IN CAP MAY BE SHIFTED AS NECESSARY TO CLEAR DOWELS.

THE LATERAL GUIDE AT EACH END OF THE CAP IS NOT TO BE POURED UNTIL AFTER THE CORED SLAB UNITS ARE IN PLACE.

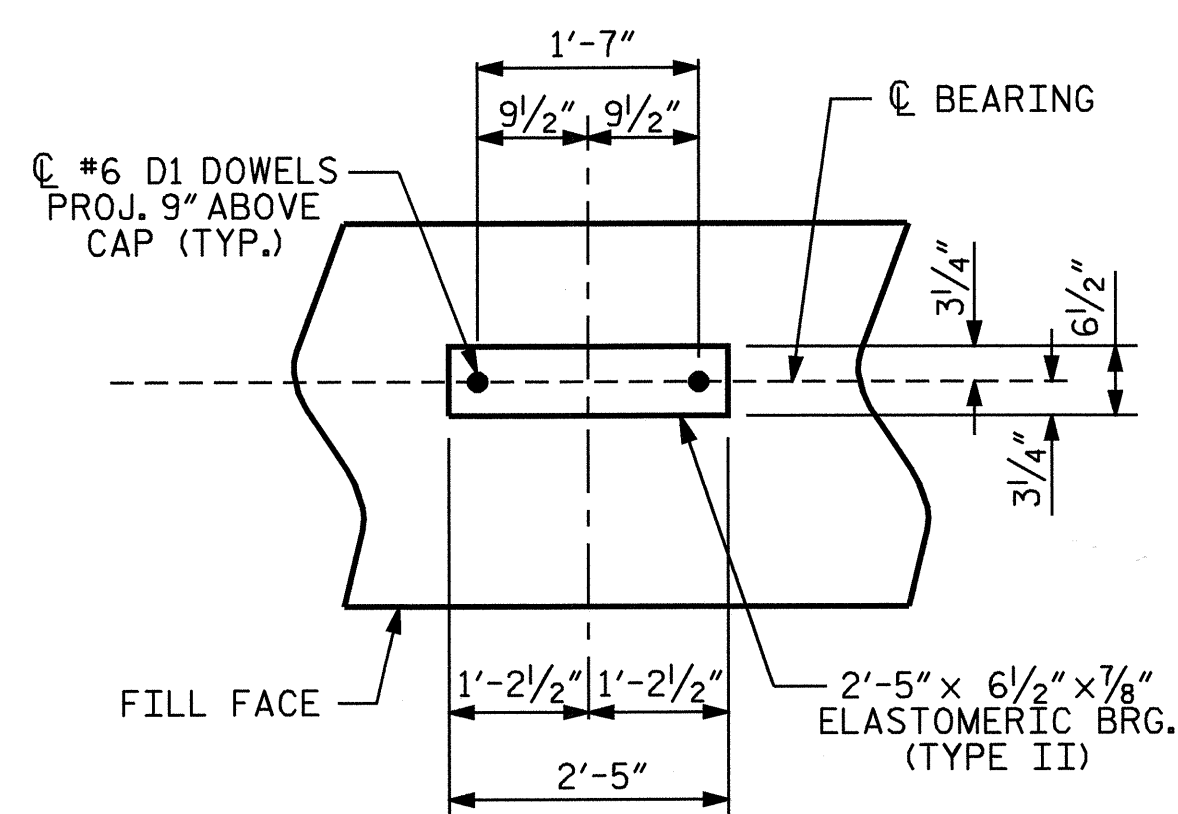
THE CONTRACTOR SHALL PROVIDE FOR INSTALLATION OF THE 4" DIAMETER DRAIN PIPE THROUGH THE WING WALL AS REQUIRED FOR REINFORCED BRIDGE APPROACH FILLS, SEE THE ROADWAY PLANS. REINFORCING STEEL IN THE WING WALL MAY BE SHIFTED AS NECESSARY TO CLEAR THE DRAIN PIPE.



PLAN

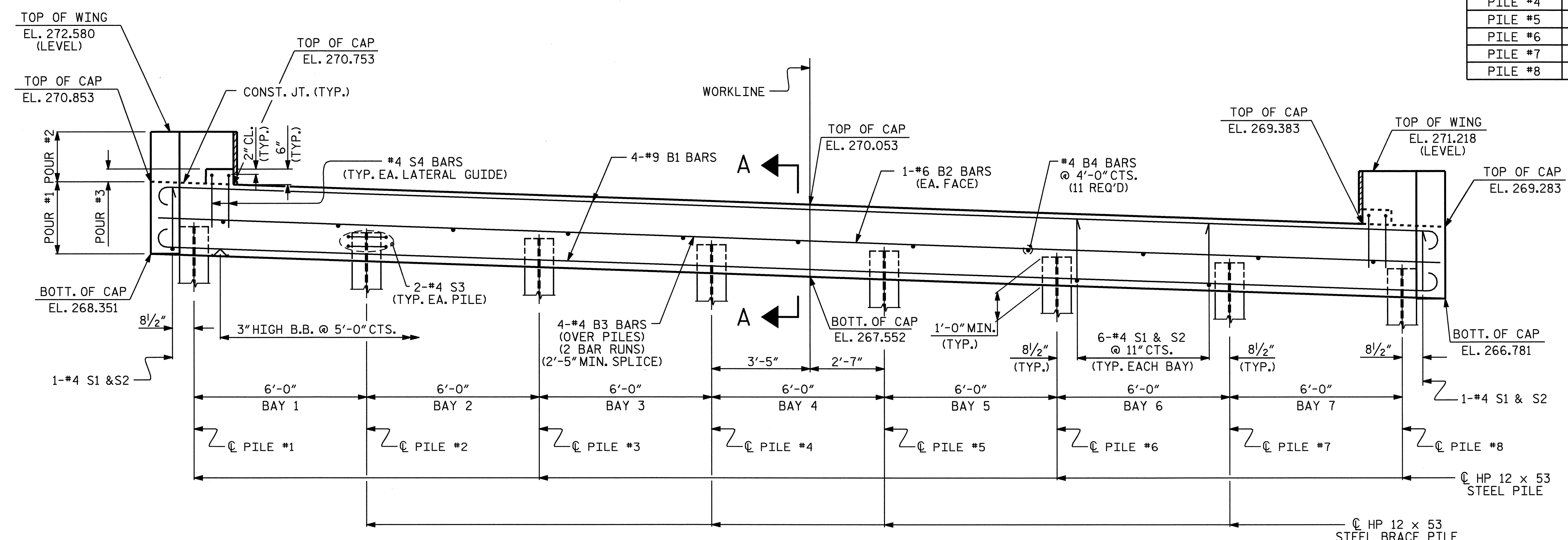


LATERAL GUIDE



DETAIL "A"

PILE #	TOP OF PILE ELEVATION
PILE #1	269.316
PILE #2	269.107
PILE #3	268.897
PILE #4	268.688
PILE #5	268.479
PILE #6	268.269
PILE #7	268.060
PILE #8	267.851



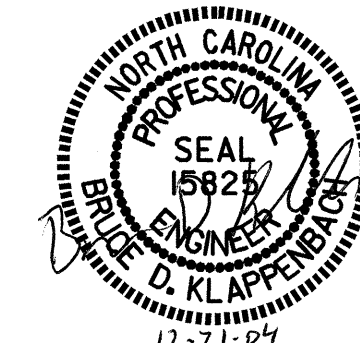
ELEVATION

PROJECT NO. B-3703
WAKE COUNTY
 STATION: 18+17.85 -L-

SHEET 1 OF 3

STATE OF NORTH CAROLINA
 DEPARTMENT OF TRANSPORTATION
 RALEIGH

**SUBSTRUCTURE
 END BENT #1**



REVISIONS						SHEET NO.	
NO.	BY:	DATE:	NO.	BY:	DATE:	S-14	
1			3			TOTAL SHEETS	
2			4			27	

DRAWN BY: M. G. SHAIKH DATE: 10-20-04
 CHECKED BY: D. A. GLADDEN DATE: 10-26-04

20-DEC-2004 09:02
 W:\squad1\B3703\mshalkh\MICROS\B-3703\B.DGN
 mshalkh