

PROJECT REFERENCE NO. B-3703	SHEET NO. EC-4/CONST.4
RW SHEET NO.	
ROADWAY DESIGN ENGINEER	HYDRAULICS ENGINEER

**DATUM DESCRIPTION**

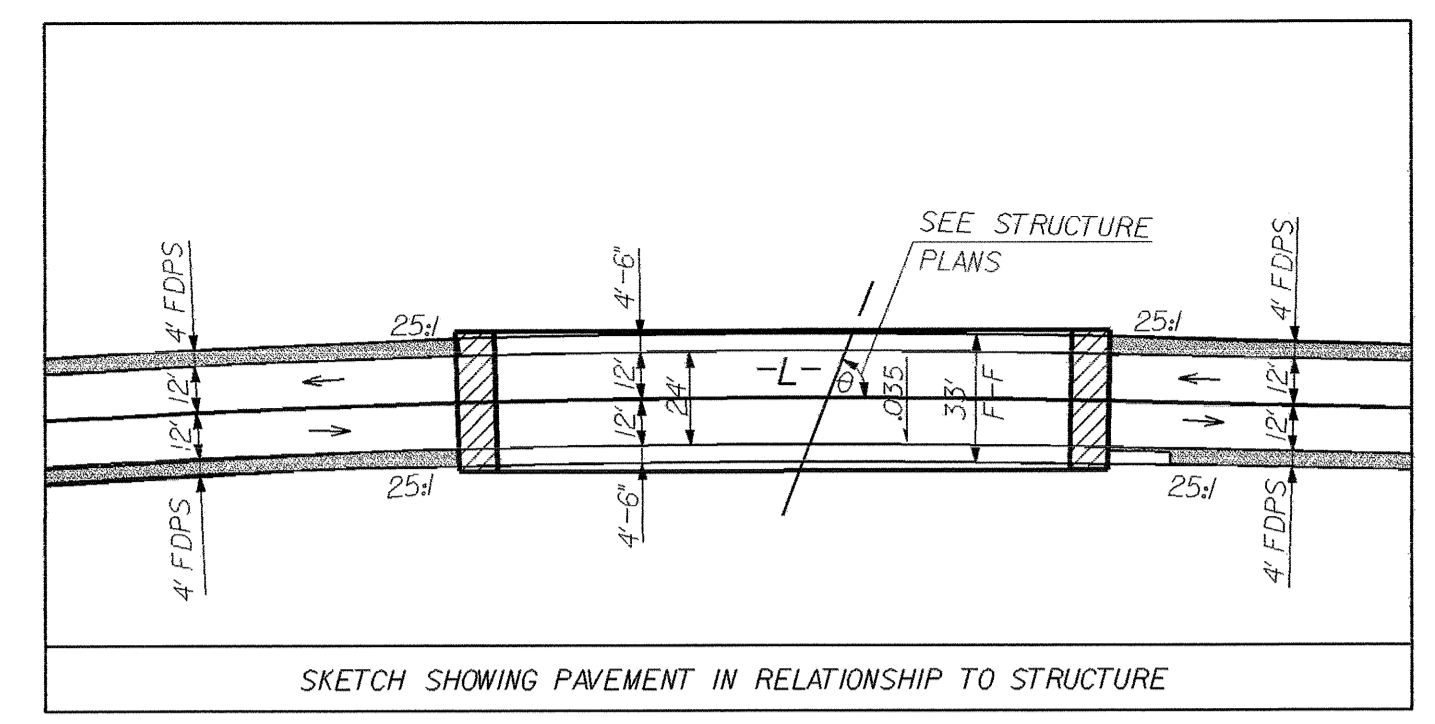
THE LOCALIZED COORDINATE SYSTEM DEVELOPED FOR THIS PROJECT IS BASED ON THE STATE PLANE COORDINATES ESTABLISHED BY NCDOT FOR MONUMENT "B3703-1" WITH NAD 1983/95 STATE PLANE GRID COORDINATES OF NORTHING: 690589.8255(1) EASTING: 207980.3432(1) THE AVERAGE COMBINED GRID FACTOR USED ON THIS PROJECT (GROUND TO GRID) IS: 0.99988555 THE N.C. LAMBERT GRID BEARING AND LOCALIZED HORIZONTAL GROUND DISTANCE FROM "B3703-1" TO -L- STATION 14+80.00 IS S 36° 41' 37.81" W 2615.0552 FT ALL LINEAR DIMENSIONS ARE LOCALIZED HORIZONTAL DISTANCES VERTICAL DATUM USED IS NAVD88

-L-

PI Sta 10+69.25 Δ = 4' 49" 06.5" (RT) D = 5' 43' 46.5" L = 84.10' T = 42.07' R = 1,000.00'	PI Sta 17+46.57 Δ = 5' 18' 19.0" (RT) D = 1' 38' 13.3" L = 324.08' T = 162.16' R = 3,500.00'
---	---

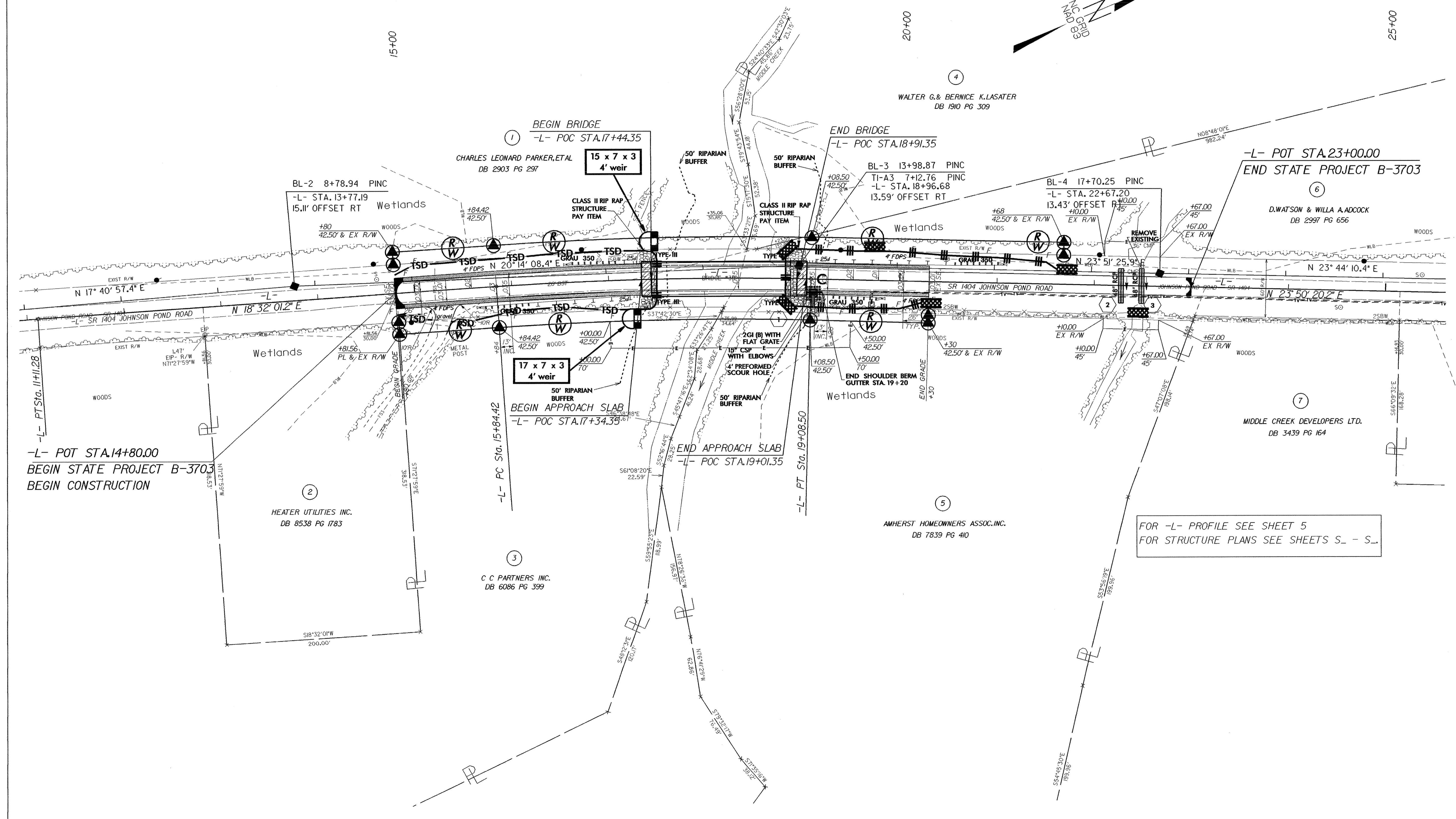
RUNOFF = SEE PLANS  
SE = 035\*  
DESIGN SPEED = 50 mph

\*SE = 035 USED DUE TO DRAINAGE SPREAD ACROSS BRIDGE.



NOTE: TEMPORARY SILT FENCE SHALL BE INSTALLED A MINIMUM OF 3 FEET FROM TOE OF FILL IN WETLAND AREAS

NOTE: UTILIZE TEMPORARY ROCK SEDIMENT DAM TYPE - B AS STILLING BASIN WHERE APPLICABLE.



FOR -L- PROFILE SEE SHEET 5  
FOR STRUCTURE PLANS SEE SHEETS S\_ - S\_