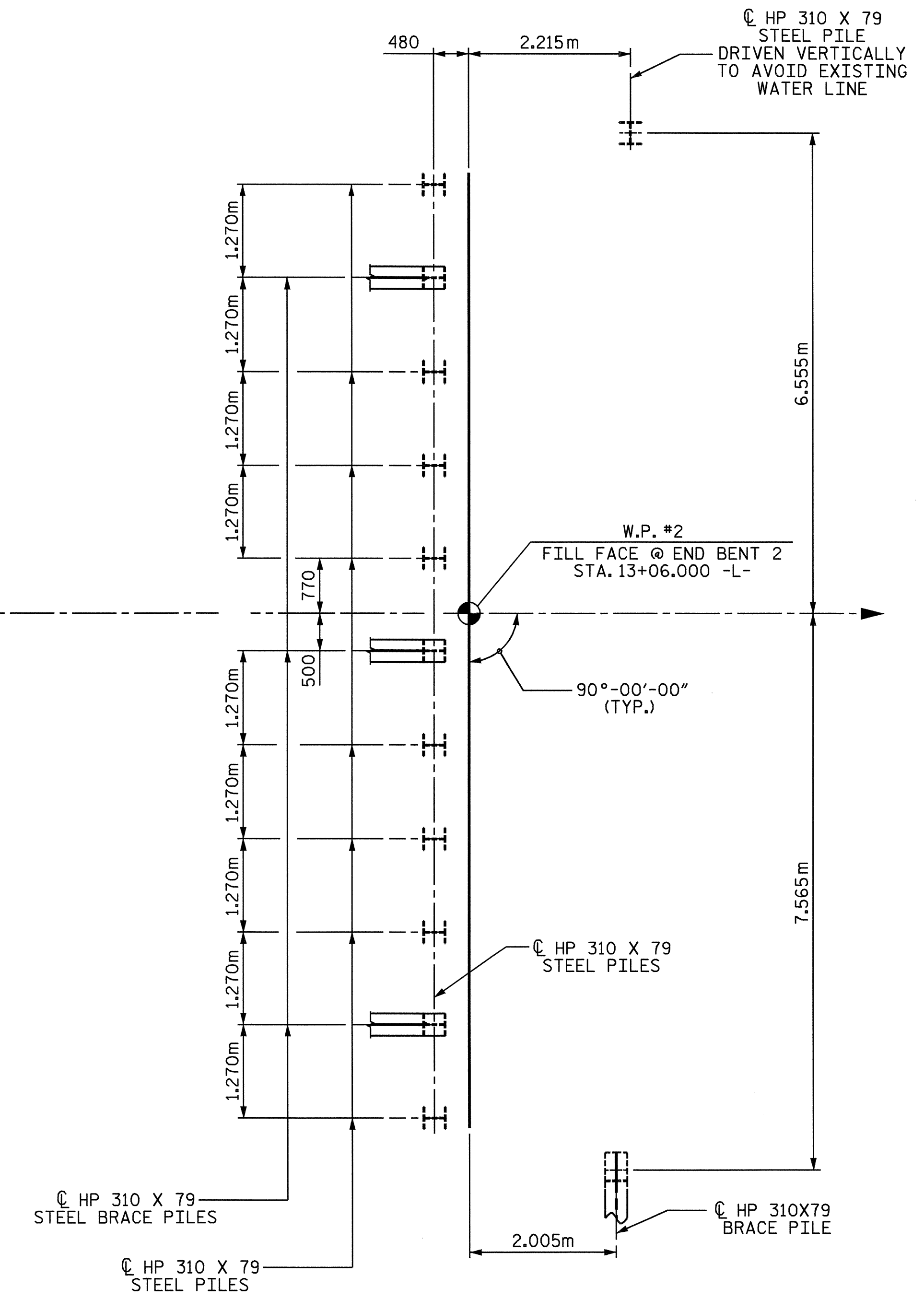


**FOUNDATION LAYOUT**



**NOTES**

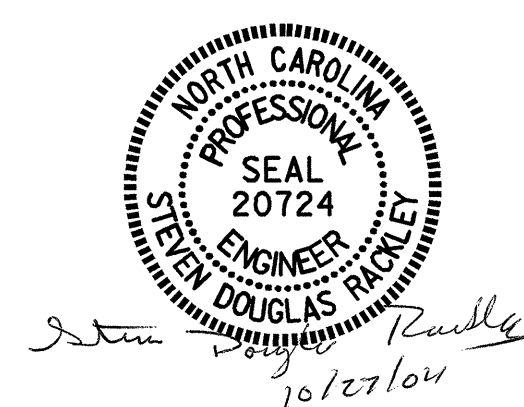
ALL PILES ARE HP 310 X 79 STEEL PILES.  
 DIMENSIONS LOCATING PILES ARE TO PILE CENTERLINES.  
 PILES AT END BENT NO.1 AND END BENT NO.2 SHALL BE DRIVEN TO A MINIMUM BEARING CAPACITY OF 490 kN EACH.  
 WHEN DRIVING PILES, THE MAXIMUM BLOW COUNT SHALL NOT BE EXCEEDED.  
 PILE EXCAVATION SHALL BE USED TO INSTALL PILES TO ELEVATION 65.500 METERS AT END BENT NO.1 (RIGHT SIDE). SEE PILE EXCAVATION SPECIAL PROVISION.  
 PILES AT END BENT 1 WHICH ARE NOT INSTALLED BY DRILLING OR AUGERING SHALL HAVE STEEL PILE POINTS. FOR STEEL PILE POINTS SEE SPECIAL PROVISIONS.

PROJECT NO. B-3376  
WAKE COUNTY  
 STATION: 12+90.000 -L-

SHEET 2 OF 3

STATE OF NORTH CAROLINA  
 DEPARTMENT OF TRANSPORTATION  
 RALEIGH

**GENERAL DRAWING**  
 FOR BRIDGE ON SR 2564  
 OVER BIG BRANCH CREEK  
 BETWEEN SR 1004 & SR 2542



DRAWN BY : A. K. PATEL DATE : 8-02-04  
 CHECKED BY : S. H. SOCKWELL DATE : 8-09-04

REVISIONS						SHEET NO.
NO.	BY:	DATE:	NO.	BY:	DATE:	S-2
1			3			TOTAL SHEETS
2			4			23