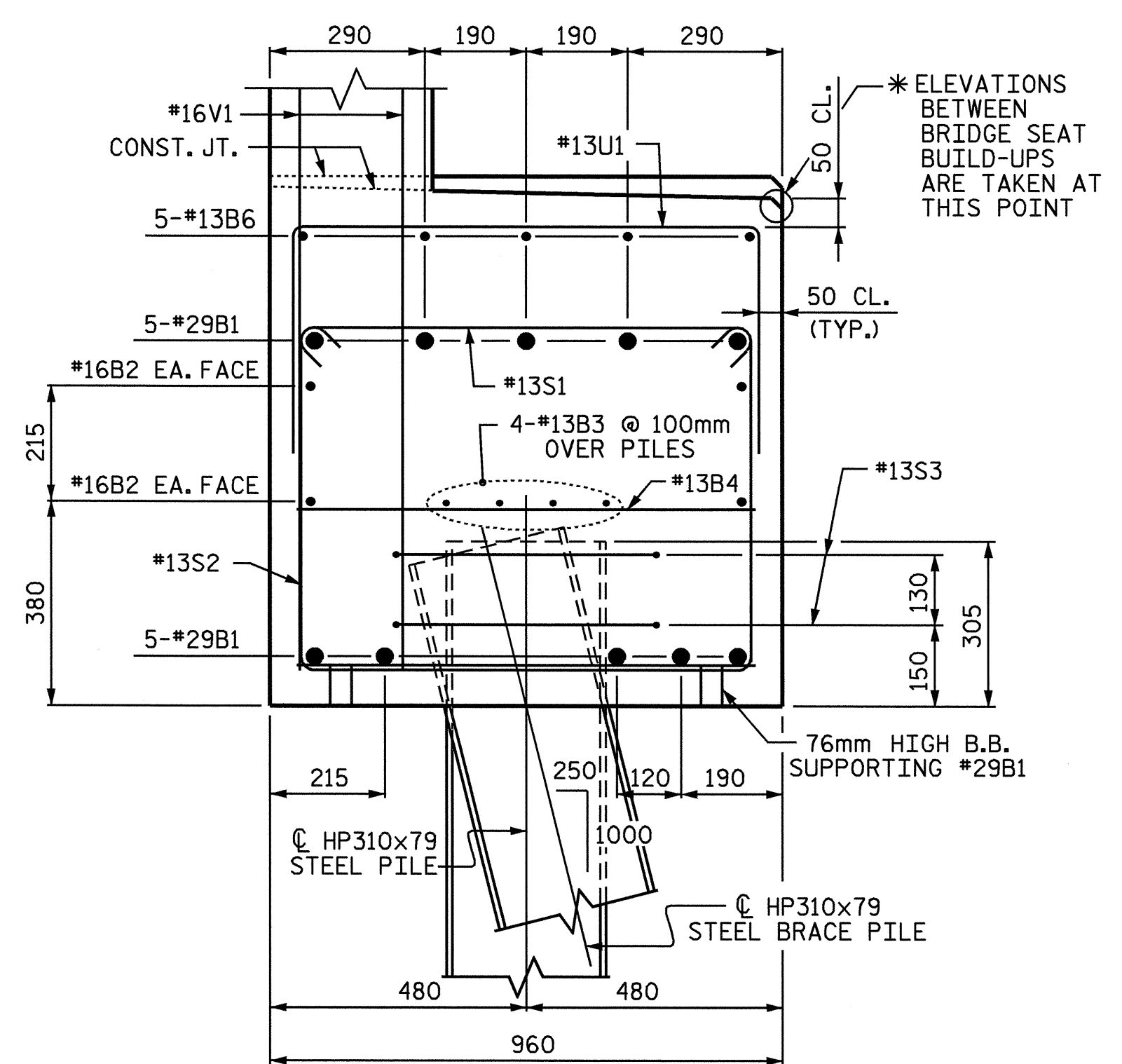
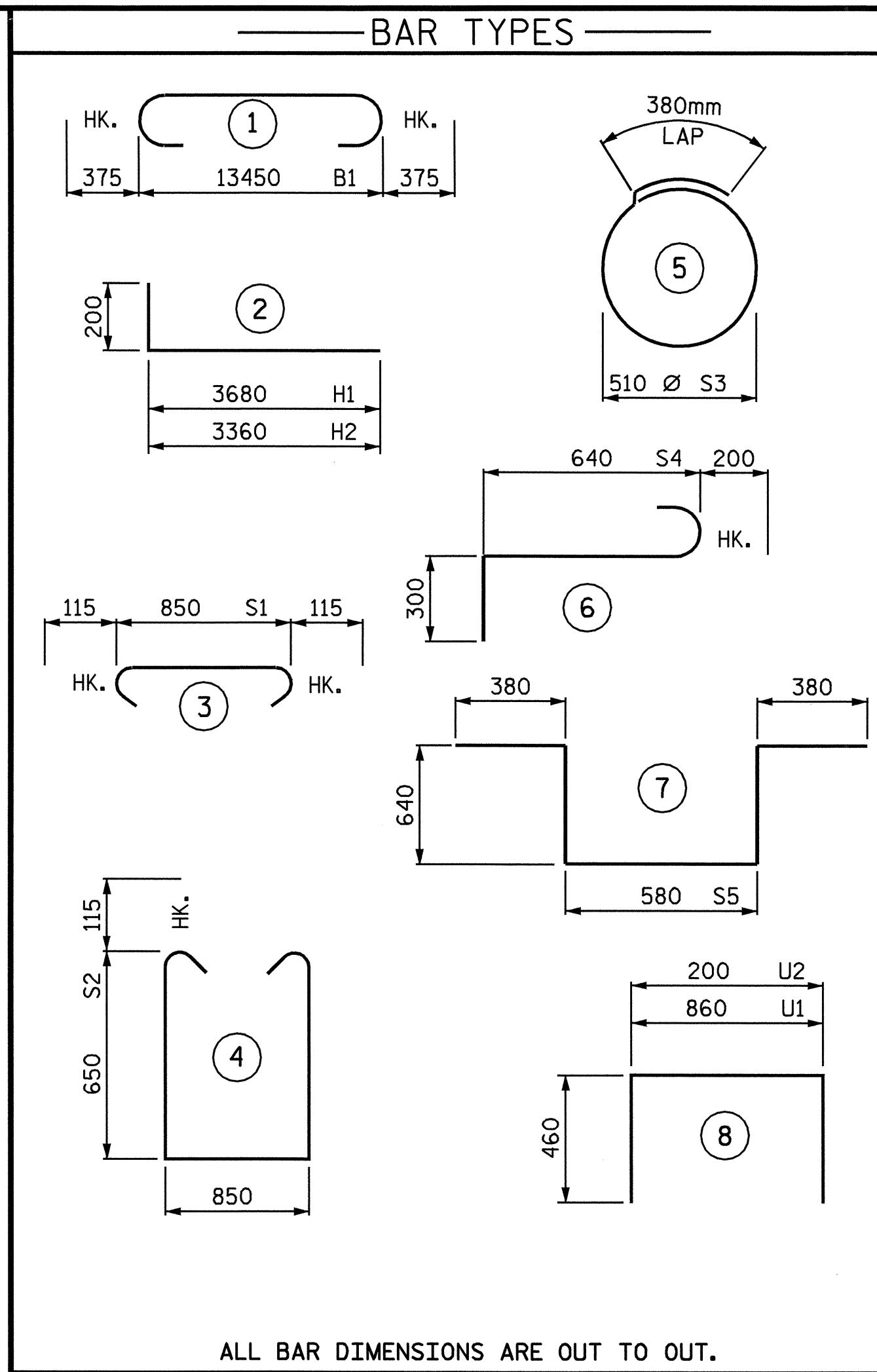


SECTION A-A

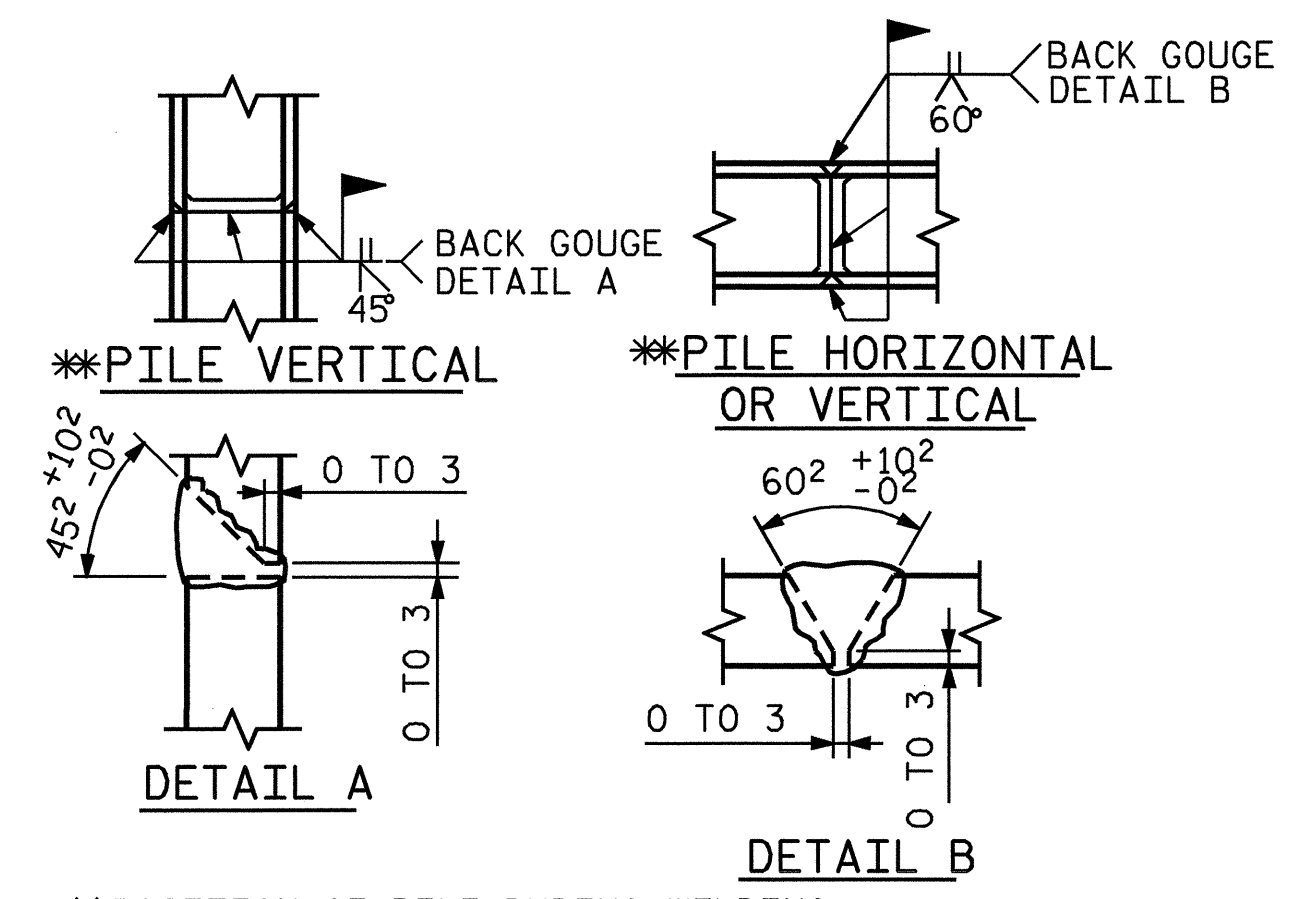


SECTION B-B

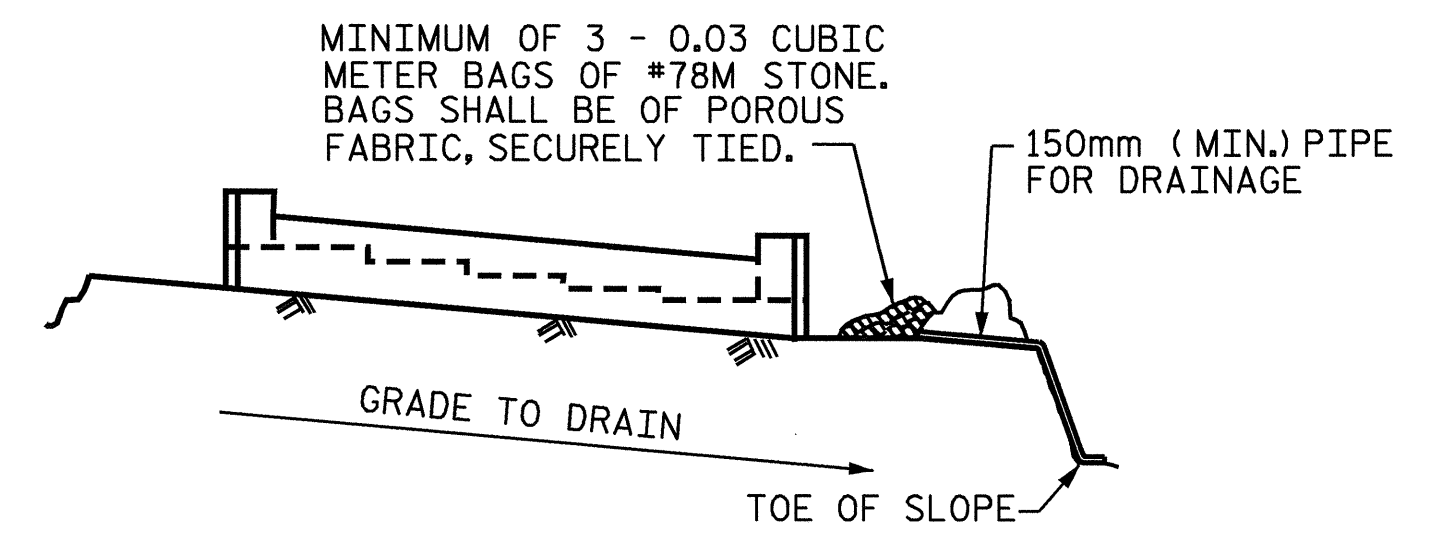


ALL BAR DIMENSIONS ARE OUT TO OUT.

BILL OF MATERIAL					
END BENT NO. 2					
BAR NO.	SIZE	TYPE	LENGTH	WEIGHT	
B1	10	29	1	14200	719
B2	4	16	STR.	13480	84
B3	8	13	STR.	7120	57
B4	12	13	STR.	860	13
B5	5	13	STR.	5400	27
B6	5	13	STR.	2580	10
B7	5	13	STR.	1000	5
H1	22	16	2	3880	132
H2	20	16	2	3560	111
K1	24	13	STR.	7120	170
K2	4	13	STR.	880	3
S1	62	13	3	1080	67
S2	62	13	4	2380	147
S3	22	13	5	1980	43
S4	6	19	6	1140	15
S5	2	19	7	2620	12
U1	19	13	8	1780	34
U2	39	13	8	1120	43
V1	78	16	STR.	2300	279
V2	32	16	STR.	2880	143
V3	30	16	STR.	2660	124
REINFORCING STEEL				Kgs	2,238
CLASS A CONCRETE					
POUR #1				Cu. m.	13.6
POUR #2				Cu. m.	11.7
TOTAL				Cu. m.	25.3
HP310x79 STEEL PILES					
No. 13				meters	71.5



PILE SPLICE DETAILS



BAGGED STONE AND PIPE SHALL BE PLACED IMMEDIATELY AFTER COMPLETION OF END BENT EXCAVATION. PIPE MAY BE EITHER CONCRETE, CORRUGATED STEEL, CORRUGATED ALUMINUM ALLOY, OR CORRUGATED PLASTIC. PERFORATED PIPE WILL NOT BE ALLOWED.

BAGGED STONE SHALL REMAIN IN PLACE UNTIL THE ENGINEER DIRECTS THAT IT BE REMOVED. THE CONTRACTOR SHALL REMOVE AND DISPOSE OF SILT ACCUMULATIONS AT BAGGED STONE WHEN SO DIRECTED BY THE ENGINEER. BAGS SHALL BE REMOVED AND REPLACED WHENEVER THE ENGINEER DETERMINES THAT THEY HAVE DETERIORATED AND LOST THEIR EFFECTIVENESS.

NO SEPARATE PAYMENT WILL BE MADE FOR THIS WORK AND THE ENTIRE COST OF THIS WORK SHALL BE INCLUDED IN THE UNIT CONTRACT PRICE BID FOR THE SEVERAL PAY ITEMS.

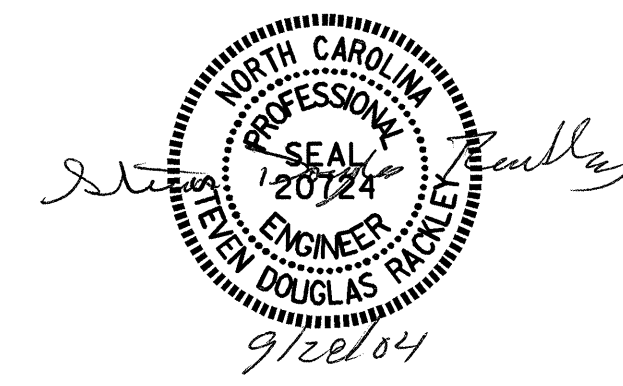
TEMPORARY DRAINAGE AT END BENT

PROJECT NO. B-3376  
WAKE COUNTY  
 STATION 12+90.000 -L-

SHEET 3 OF 3

STATE OF NORTH CAROLINA  
 DEPARTMENT OF TRANSPORTATION  
 RALEIGH

SUPERSTRUCTURE  
 END BENT #2



DRAWN BY: Keith D. Layne DATE: 6-22-04  
 CHECKED BY: H.A.L. DATE: 6-28-04

REVISIONS						SHEET NO.
NO.	BY:	DATE:	NO.	BY:	DATE:	S-18
1			3			TOTAL SHEETS
2			4			23