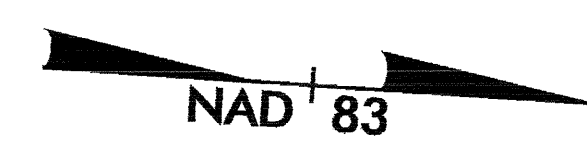




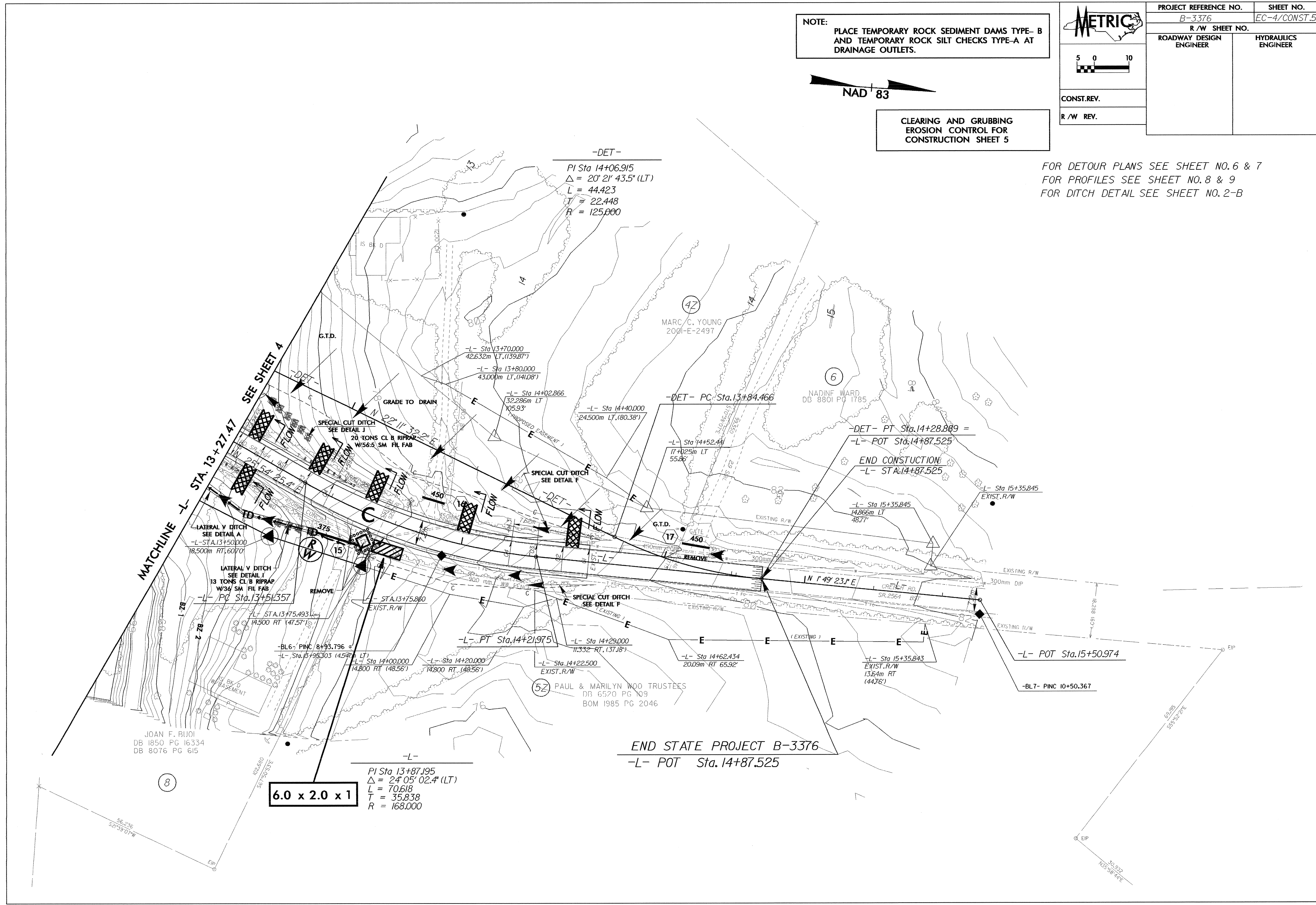
PROJECT REFERENCE NO. B-3376	SHEET NO. EC-4/CONST.5
R/W SHEET NO.	
ROADWAY DESIGN ENGINEER	HYDRAULICS ENGINEER
CONST.REV.	
R/W REV.	

NOTE:
PLACE TEMPORARY ROCK SEDIMENT DAMS TYPE- B
AND TEMPORARY ROCK SILT CHECKS TYPE-A AT
DRAINAGE OUTLETS.



CLEARING AND GRUBBING
EROSION CONTROL FOR
CONSTRUCTION SHEET 5

FOR DETOUR PLANS SEE SHEET NO.6 & 7
FOR PROFILES SEE SHEET NO.8 & 9
FOR DITCH DETAIL SEE SHEET NO.2-B



6.0 x 2.0 x 1

END STATE PROJECT B-3376
-L- POT Sta. 14+87.525

-L-
PI Sta 13+87.195
Δ = 24° 05' 02.4" (LT)
L = 70.618
T = 35.838
R = 168.000

JOAN F. BUOI
DB 1850 PG 16334
DB 8076 PG 615

52 PAUL & MARILYN WOO TRUSTEES
DB 6520 PG 109
BOM 1985 PG 2046

END CONSTRUCTION
-L- STA. 14+87.525

-L- POT Sta. 15+50.974

-BL7- PINC 10+50.367

-DET- PT Sta. 14+28.889 =
-L- POT Sta. 14+87.525

-DET- PC Sta. 13+84.466

-DET-
PI Sta 14+06.915
Δ = 20° 21' 43.5" (LT)
L = 44.423
T = 22.448
R = 125.000

LATERAL V DITCH
SEE DETAIL A
-L- STA. 13+50.000
18.500m RT. (60.70')

LATERAL V DITCH
SEE DETAIL I
13 TONS CL B RIPRAP
W/36 SM FIL FAB
-L- PC Sta. 13+51.357

-BL6- PINC 8+93.796 =
-L- Sta. 13+75.493 (14.500 RT (47.57'))

-L- STA. 13+75.860
EXIST. R/W

-L- PT Sta. 14+21.975

-L- Sta 14+29.000
11.332 RT. (37.18')

-L- Sta 14+62.434
20.09m RT 65.92'

-L- Sta 15+35.843
EXIST. R/W
13.64m RT (44.76')

-L- Sta 15+35.845
EXIST. R/W

-L- Sta 15+35.845
14.866m LT
48.77'

-L- Sta 14+52.441
17+025m LT
55.86'

-L- Sta 14+02.866
32.286m LT
105.93'

-L- Sta 13+80.000
43.000m LT. (141.08')

-L- Sta 13+70.000
42.632m LT. (139.87')

MATCHLINE -L- STA. 13+27.47
SEE SHEET A

56.236
M.L. 63.125

30.922
N55°58'49"E

69.955
S59°32'27"E

109.610
S67°30'23"E

109.610
S67°30'23"E

109.610
S67°30'23"E

109.610
S67°30'23"E

109.610
S67°30'23"E

109.610
S67°30'23"E

109.610
S67°30'23"E

109.610
S67°30'23"E

109.610
S67°30'23"E

109.610
S67°30'23"E

109.610
S67°30'23"E

109.610
S67°30'23"E

109.610
S67°30'23"E

109.610
S67°30'23"E