

NOTES

APPROACH SLAB FOR EACH STAGE SHALL NOT BE CONSTRUCTED PRIOR TO COMPLETION OF THE BRIDGE DECK FOR EACH STAGE.

FOR REINFORCED BRIDGE APPROACH FILL INCLUDING FABRIC, IMPERMEABLE GEOMEMBRANE, 4" Ø DRAINAGE PIPE, #78M STONE, AND SELECT MATERIAL, SEE ROADWAY PLANS.

TEMPORARY DRAINAGE AND TEMPORARY BERM AND SLOPE DRAINS WILL BE PAID FOR UNDER THE LUMP SUM PRICE FOR BRIDGE APPROACH SLAB.

AREA BETWEEN THE WINGWALL AND APPROACH SLAB SHALL BE GRADED TO DRAIN THE WATER AWAY FROM THE FILL FACE OF THE BRIDGE AND SHALL BE PAVED. SEE ROADWAY PLANS.

THE 6" COMP. A.B.C. SHALL EXTEND 10'-0" BEYOND THE END OF THE APPROACH SLAB AND 1'-0" OUTSIDE OF EACH EDGE OF SLAB.

THE CONTRACTOR MAY USE 4" TYPE B-25.0B ASPHALT CONCRETE BASE COURSE IN LIEU OF 6" COMP. A.B.C. IF THIS OPTION IS USED, THE BASE COURSE SHALL EXTEND 1'-0" BEYOND THE END OF THE APPROACH SLAB AND THE WIDTH SHALL BE THE SAME AS THAT OF THE APPROACH SLAB.

THE CONTRACTOR MAY USE 5" CLASS "A" CONCRETE BASE IN LIEU OF 6" COMP. A.B.C. IF THIS OPTION IS USED, THE CONCRETE BASE SHALL EXTEND 1'-0" BEYOND THE END OF THE APPROACH SLAB AND THE WIDTH SHALL BE THE SAME AS THAT OF THE APPROACH SLAB. THE CONCRETE SHALL BE FINISHED TO A SMOOTH SURFACE AND A LAYER OF 30 LB ROOFING FELT SHALL BE PLACED BETWEEN THE CONCRETE BASE AND THE APPROACH SLAB TO PREVENT BOND. THE APPROACH SLAB SHALL NOT BE CAST UNTIL THE CONCRETE BASE HAS REACHED AN AGE OF THREE CURING DAYS.

THE JOINT SHALL BE SAWED PRIOR TO THE CASTING OF THE PARAPET AND END POST.

WITH EVAZOTE JOINT SEAL

FOR EVAZOTE JOINT SEALS, SEE SPECIAL PROVISIONS.

THE NOMINAL UNCOMPRESSED SEAL WIDTH OF THE EVAZOTE JOINT SEAL SHALL BE 2 13/16".

**BILL OF MATERIAL
FOR ONE APPROACH SLAB
(2 REQUIRED)**

STAGE I					
BAR	NO.	SIZE	TYPE	LENGTH	WEIGHT
*A1	48	#5	STR	40'-5"	2023
A2	98	#4	STR	20'-9"	1358
*B1	61	#6	STR	24'-1"	2207
B2	61	#8	STR	24'-7"	4004

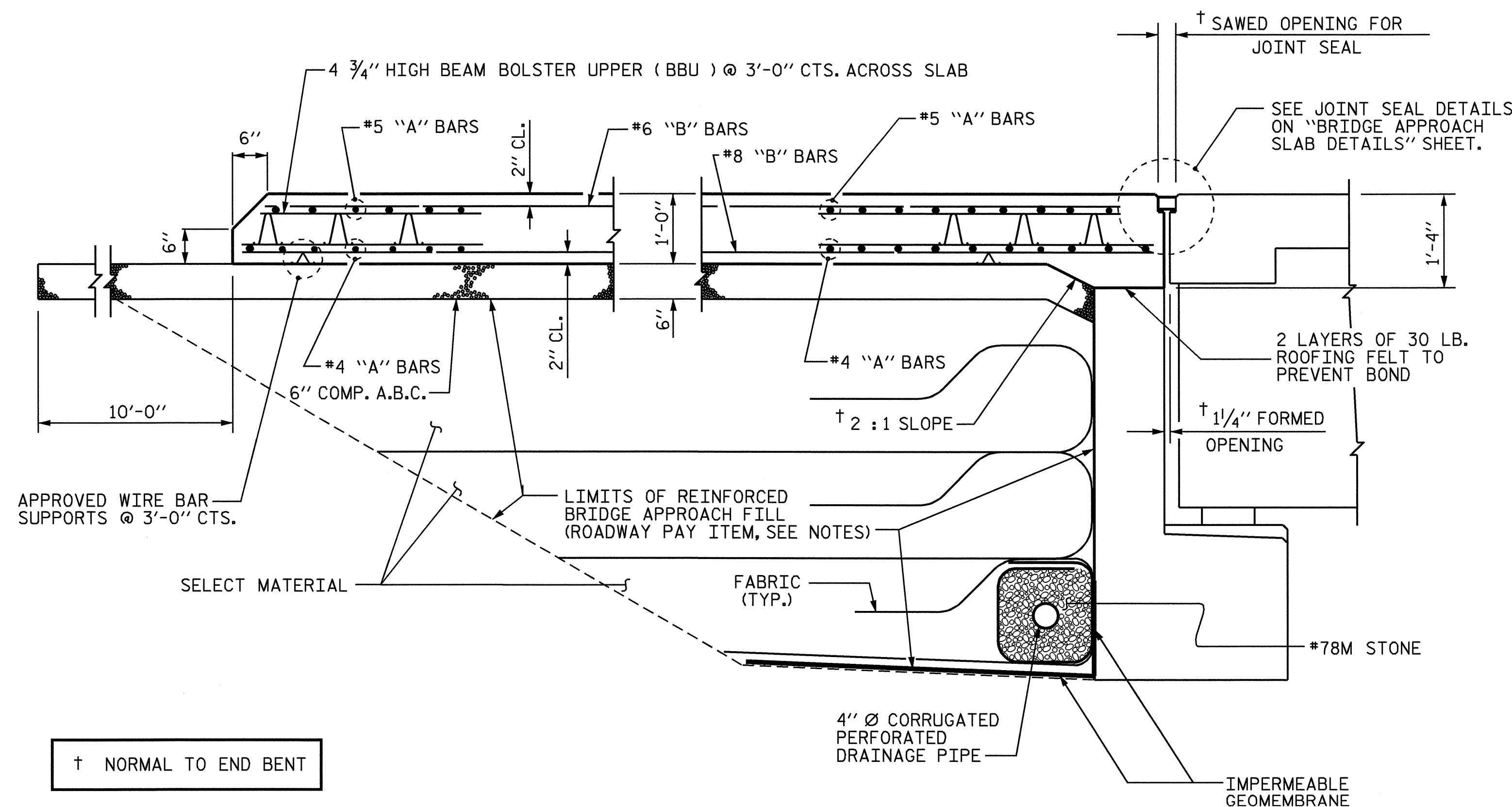
REINFORCING STEEL	LBS.	5362
*EPOXY COATED REINFORCING STEEL	LBS.	4230

CLASS AA CONCRETE	C. Y.	29.0
-------------------	-------	------

STAGE II					
BAR	NO.	SIZE	TYPE	LENGTH	WEIGHT
*A3	48	#5	STR	27'-7"	1381
A4	49	#4	STR	27'-7"	903
*B1	45	#6	STR	24'-1"	1628
B2	45	#8	STR	24'-7"	2954

REINFORCING STEEL	LBS.	3009
*EPOXY COATED REINFORCING STEEL	LBS.	3857

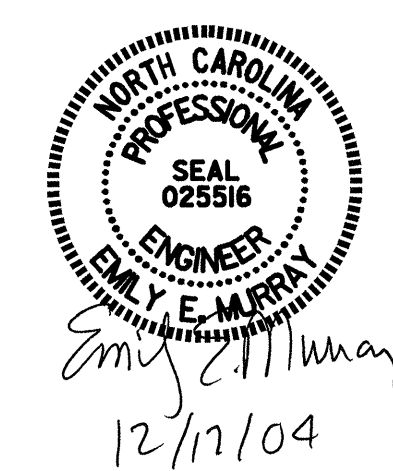
CLASS AA CONCRETE	C. Y.	21.4
-------------------	-------	------



SECTION THRU SLAB

PROJECT NO. B-3375
WAKE COUNTY
 STATION: 43+81.84 -L-

SHEET 2 OF 3



STATE OF NORTH CAROLINA DEPARTMENT OF TRANSPORTATION RALEIGH					
STANDARD BRIDGE APPROACH SLAB FOR FLEXIBLE PAVEMENT					
MAR. 1995					SHEET NO. S-36
REVISIONS					
NO.	BY:	DATE:	NO.	BY:	DATE:
1			3		
2			4		
TOTAL SHEETS					37

ASSEMBLED BY : C.MILLER	DATE : 07-04
CHECKED BY : T.AVERETTE	DATE : 11-04
DRAWN BY : EEM 3/95	REV. 10/17/00 RWW/LES
CHECKED BY : VAP 3/95	REV. 7/10/01 LES/RDR
	REV. 5/7/03R RWW/JTE