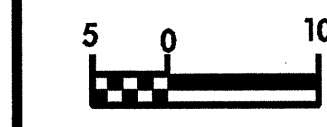


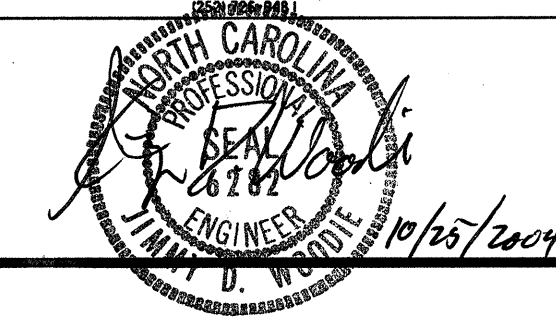
REVISIONS



PROJECT REFERENCE NO. SHEET NO.
R-2539C UC-2
R/W SHEET NO.

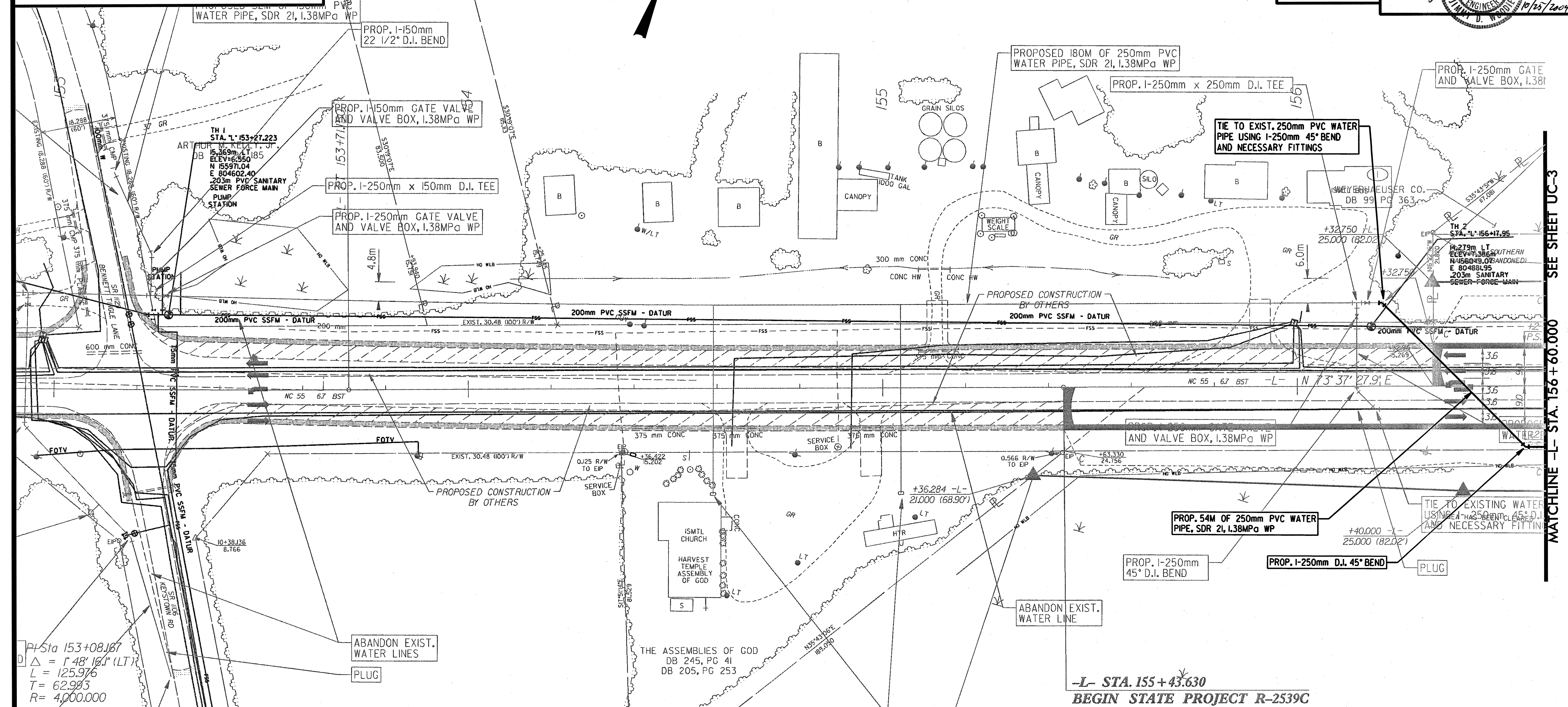


CONST. REV.
R/W REV.



OSCAR A. KRECHER, Jr.
DB 170, PG 47

OSCAR A. KRECHER, Jr.
DB 170, PG 47



Pt Sta 153+08.167
 $\Delta = 1'48''16.1''$ (LT)
 $L = 125.976$
 $T = 62.993$
 $R = 4,000.000$

DATUM DESCRIPTION
THE LOCALIZED COORDINATE SYSTEM DEVELOPED FOR THIS PROJECT IS BASED ON THE STATE PLANE COORDINATES ESTABLISHED BY MCDOT FOR MONUMENT "R2539B-6" WITH NAD 83 STATE PLANE GRID COORDINATES OF NORTHING: 155623.380(m) EASTING: 799567.18(m) THE AVERAGE COMBINED GRID FACTOR USED ON THIS PROJECT (GROUND TO GRID) IS: 999879100 THE N.C. LAMBERT GRID BEARING LOCALIZED HORIZONTAL GROUND DISTANCE FROM "R2539B-6" TO -L- 155+43.630 IS N 85°44'48.2" E 5272.478(m) ALL LINEAR DIMENSIONS ARE LOCALIZED HORIZONTAL DISTANCES VERTICAL DATUM USED IS NGVD 29

ELIZABETH HARRIS WAZNIAK
DB 244, PG 810

PROP. 2- RELOCATE EXIST. WATER METERS USING 2- 250mm x 20mm TAPPING SADDLES 2- 20mm CORPORATION STOPS WITH 90M OF 20mm P.E. WATER TUBING, SDR 9, 1.38MPa WP
-L- STA. 155+36.284
BEGIN STATE PROJECT R-2539C FOR RIGHT OF WAY

WEYERHAEUSER CO.
DB 99, PG 363

SEE SHEET UC-3
MATCHLINE -L- STA. 156 + 60.000