



REVISIONS

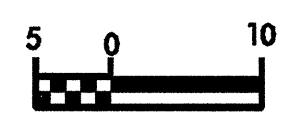


PROJECT REFERENCE NO.  
**R-2539C**

R/W SHEET NO.  
**UC-5**

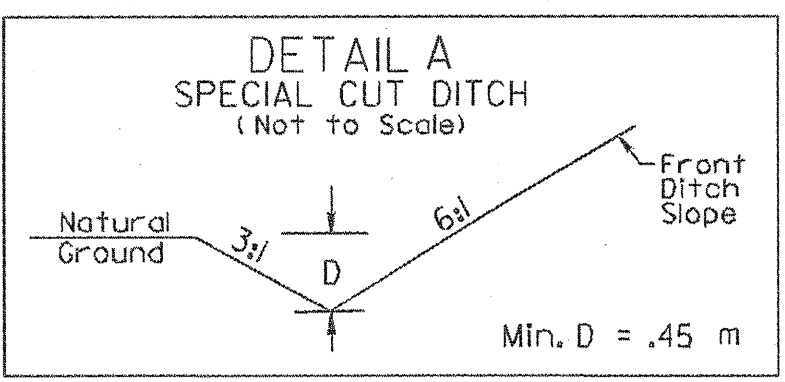
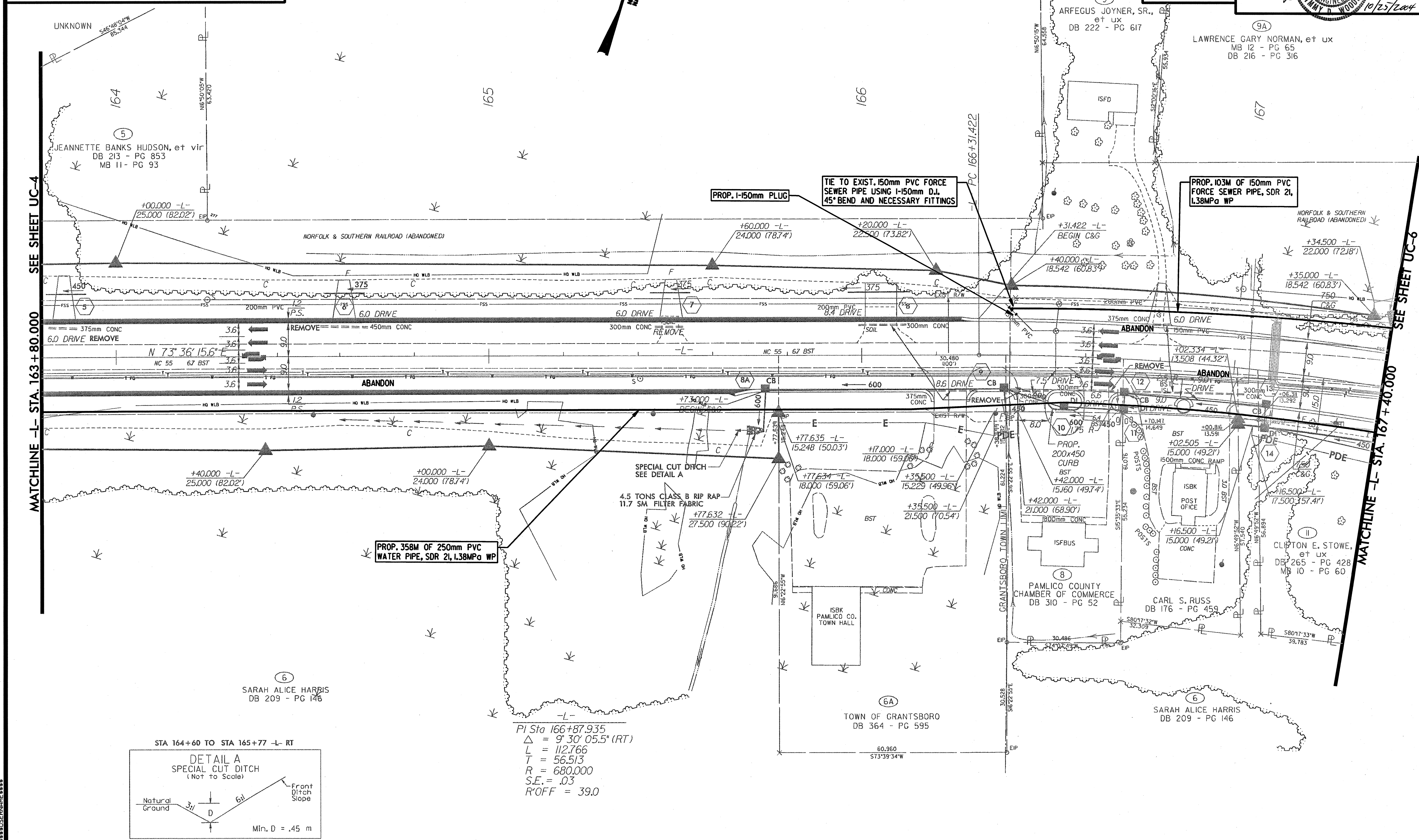


10/25/2004



CONST. REV.

R/W REV.



PI Sta 166+87.935  
 $\Delta = 9^{\circ} 30' 05.5''$  (RT)  
 L = 112.766  
 T = 56.513  
 R = 680.000  
 S.E. = .03  
 R'OFF = 39.0