

REVISIONS

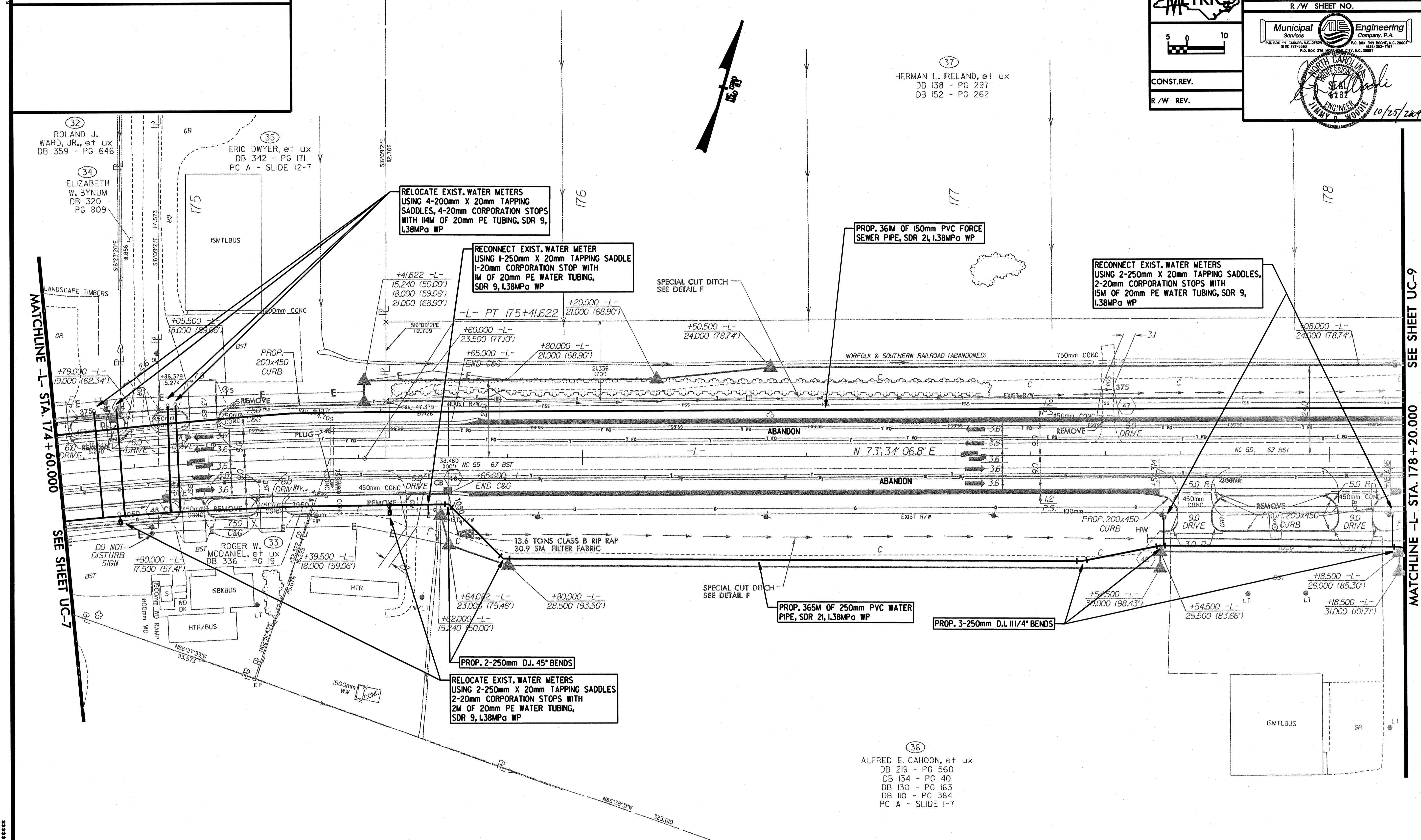
METRIC

PROJECT REFERENCE NO. **R-2539C** SHEET NO. **UC-8**
 R/W SHEET NO.

Municipal Engineering
 Services Company, P.A.
 P.O. BOX 348 BOONE, N.C. 28607
 P.A. BOX 216 WOODVILLE, N.C. 28957

Professional Engineer Seal: **JIMMY D. WOODIE**, No. 62181, dated 10/23/2014.

CONST. REV. _____
 R/W REV. _____



MATCHLINE -L- STA. 174+60.000
SEE SHEET UC-7

MATCHLINE -L- STA. 178+20.000
SEE SHEET UC-9

32 ROLAND J. WARD, JR., et ux
DB 359 - PG 646

34 ELIZABETH W. BYNUM
DB 320 - PG 809

35 ERIC DWYER, et ux
DB 342 - PG 171
PC A - SLIDE 112-7

37 HERMAN L. IRELAND, et ux
DB 138 - PG 297
DB 152 - PG 262

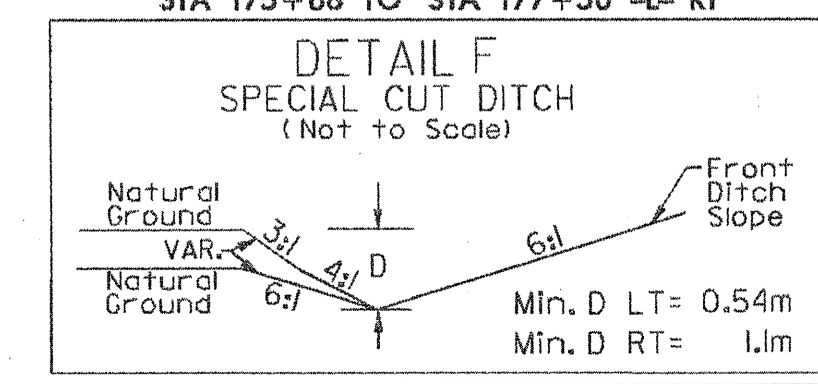
DO NOT DISTURB SIGN

33 ROGER W. MCDANIEL, et ux
DB 336 - PG 19

36 ALFRED E. CAHOON, et ux
DB 219 - PG 560
DB 134 - PG 40
DB 130 - PG 163
DB 110 - PG 384
PC A - SLIDE 1-7

LISTER DANIEL RICE, et ux
DB 269 - PG 443
DB 224 - PG 832
PC A - SLIDE 8-10

-L-
 PI Sta 174+62.032
 $\Delta = 10'16"30.8"$ (RT)
 L = 159.609
 T = 80.019
 R = 890.000
 S.E. = .03
 R'OFF = 39.0



STA 175+60 TO STA 178+20 -L- LT
 STA 175+68 TO STA 177+50 -L- RT