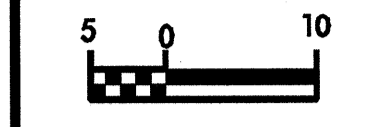


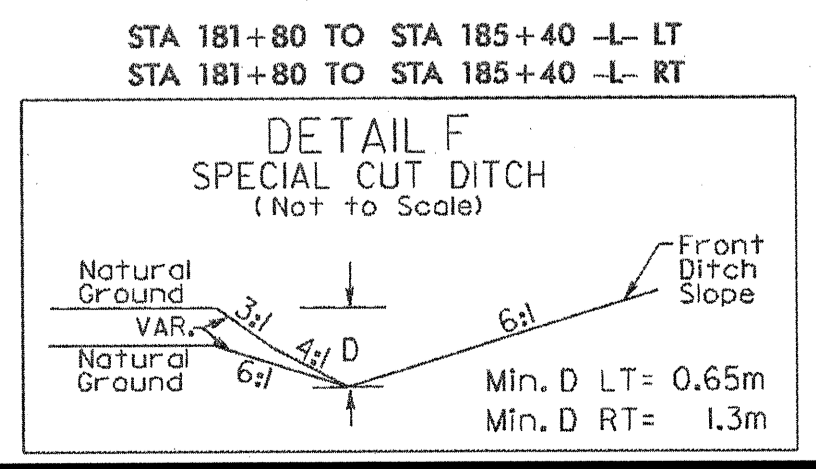
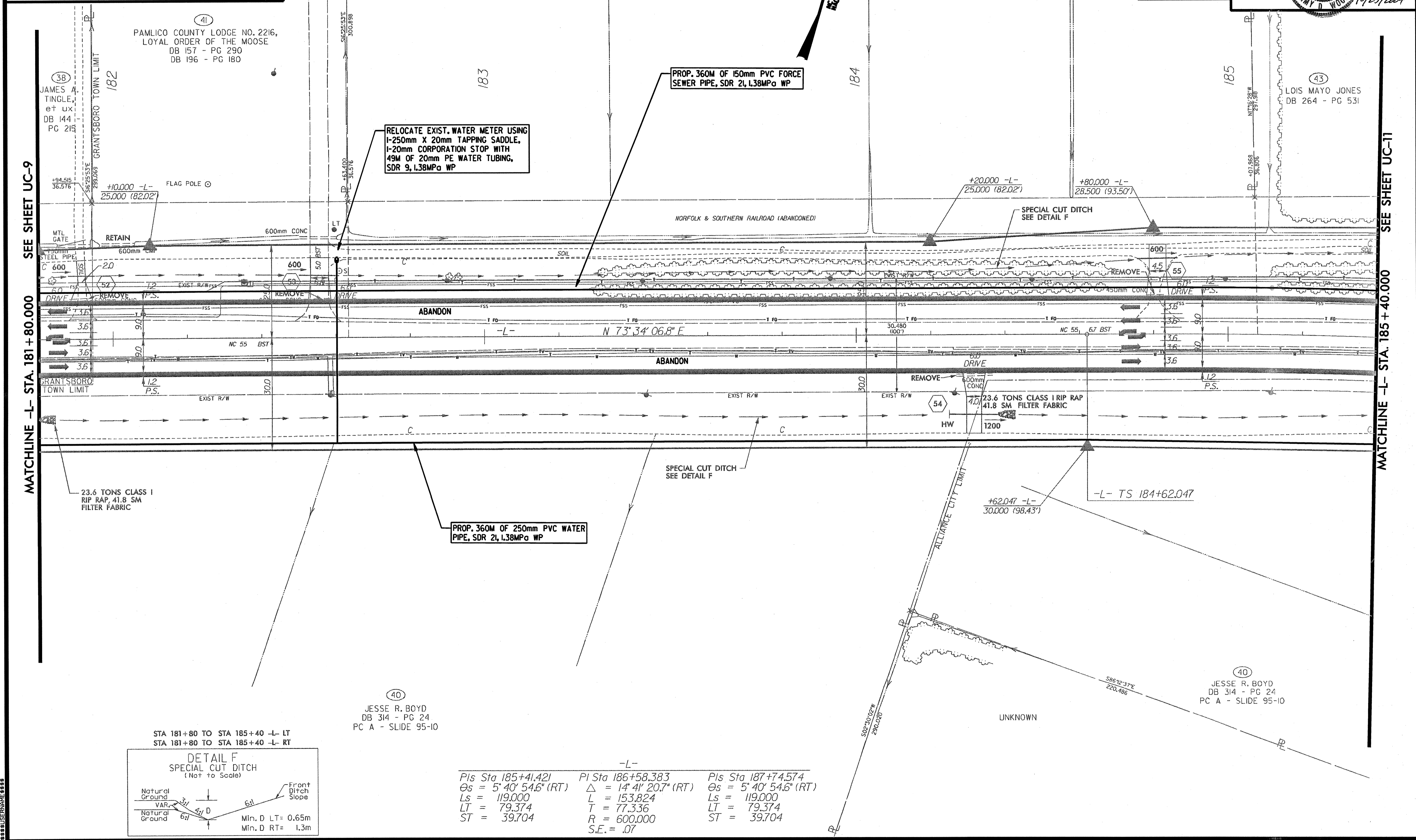
REVISIONS



PROJECT REFERENCE NO. **R-2539C** SHEET NO. **UC-10**
R/W SHEET NO.



CONST. REV.
R/W REV.



-L-

Sta	PI	Sta
Sta 185+41.421	PI Sta 186+58.383	Sta 187+74.574
$\theta_s = 5^\circ 40' 54.6''$ (RT)	$\Delta = 14^\circ 41' 20.7''$ (RT)	$\theta_s = 5^\circ 40' 54.6''$ (RT)
LS = 119.000	L = 153.824	LS = 119.000
LT = 79.374	T = 77.336	LT = 79.374
ST = 39.704	R = 600.000	ST = 39.704
	S.E. = .07	