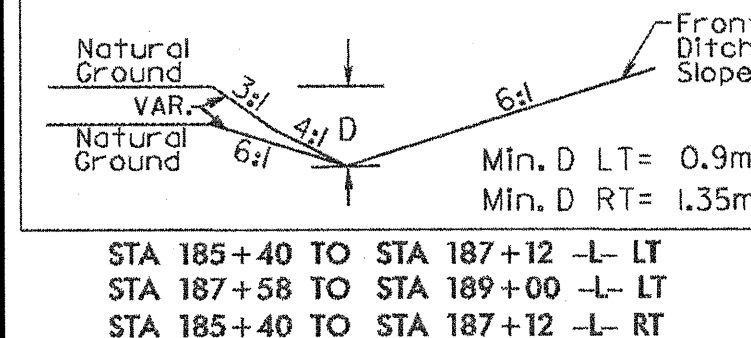
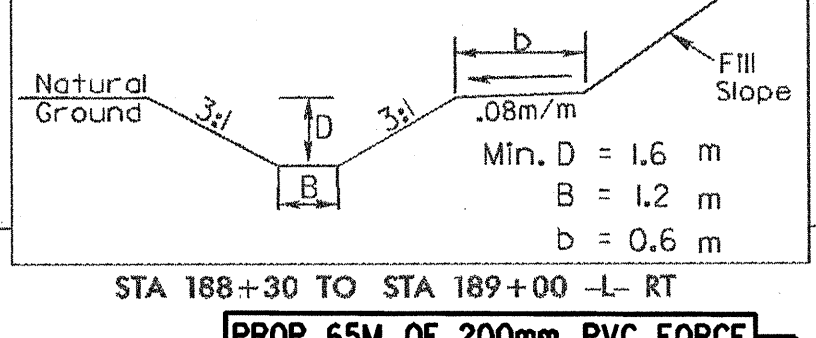


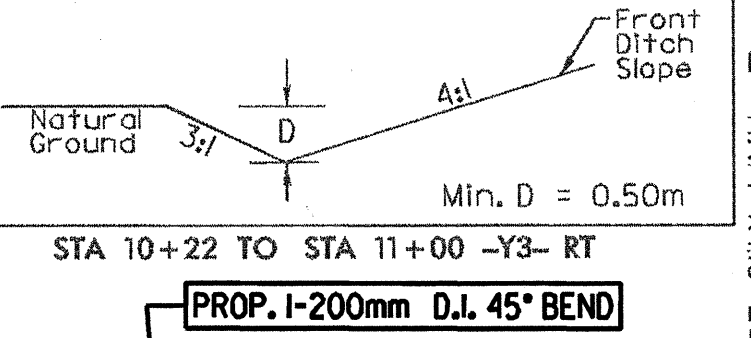
DETAIL F SPECIAL CUT DITCH (Not to Scale)



DETAIL H LATERAL BASE DITCH (Not to Scale)

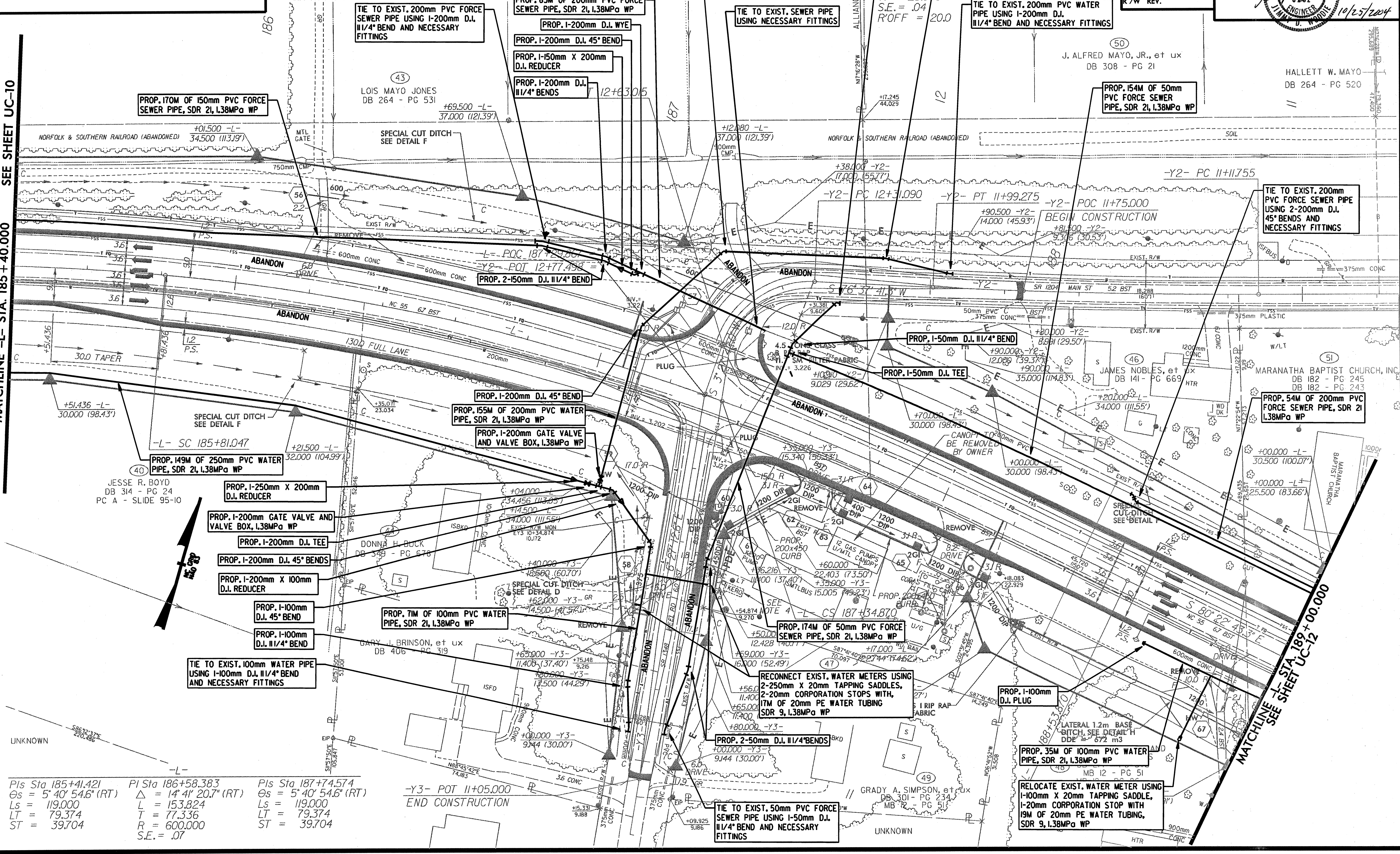


DETAIL D SPECIAL CUT DITCH (Not to Scale)



MATCHLINE -L- STA. 185 + 40.000 SEE SHEET UC-10

MATCHLINE -L- STA. 189 + 00.000 SEE SHEET UC-12



<p>Pls Sta 185+41.421 $\Delta = 5' 40'' 54.6''$ (RT) $Ls = 119.000$ $LT = 79.374$ $ST = 39.704$</p>	<p>Pls Sta 186+58.383 $\Delta = 14' 41'' 20.7''$ (RT) $L = 153.824$ $T = 77.336$ $R = 600.000$ $S.E. = .07$</p>	<p>Pls Sta 187+74.574 $\Delta = 5' 40'' 54.6''$ (RT) $Ls = 119.000$ $LT = 79.374$ $ST = 39.704$</p>
---------------------------------------------------------------------------------------------------------------------------------------------------------------------	-------------------------------------------------------------------------------------------------------------------------------------------------------------------------------------------------	---------------------------------------------------------------------------------------------------------------------------------------------------------------------

-Y3- POT 11+05.000 END CONSTRUCTION

PROP. 1-100mm D.J. PLUG

RELOCATE EXIST. WATER METER USING 1-100mm X 20mm TAPPING SADDLE, 1-20mm CORPORATION STOP WITH 19M OF 20mm PE WATER TUBING, SDR 9, L38MPa WP

RECONNECT EXIST. WATER METERS USING 2-250mm X 20mm TAPPING SADDLES, 2-20mm CORPORATION STOPS WITH 17M OF 20mm PE WATER TUBING SDR 9, L38MPa WP

PROP. 2-50mm D.J. 11/4" BENDS

TIE TO EXIST. 100mm WATER PIPE USING 1-100mm D.J. 11/4" BEND AND NECESSARY FITTINGS

PROP. 1-100mm D.J. 45° BEND

PROP. 1-100mm D.J. 11/4" BEND

PROP. 1-200mm D.J. 45° BENDS

PROP. 1-200mm D.J. TEE

PROP. 1-200mm GATE VALVE AND VALVE BOX, L38MPa WP

PROP. 1-250mm X 200mm D.J. REDUCER

PROP. 149M OF 250mm PVC WATER PIPE, SDR 21, L38MPa WP

PROP. 1-200mm GATE VALVE AND VALVE BOX, L38MPa WP

PROP. 155M OF 200mm PVC WATER PIPE, SDR 21, L38MPa WP

PROP. 1-200mm D.J. 45° BEND

PROP. 2-150mm D.J. 11/4" BEND

PROP. 1-50mm D.J. TEE

PROP. 1-50mm D.J. 11/4" BEND

TIE TO EXIST. 200mm PVC FORCE SEWER PIPE USING 2-200mm D.J. 45° BENDS AND NECESSARY FITTINGS

TIE TO EXIST. 200mm PVC WATER PIPE USING 1-200mm D.J. 11/4" BEND AND NECESSARY FITTINGS

TIE TO EXIST. SEWER PIPE USING NECESSARY FITTINGS

PROP. 1-200mm D.J. 45° BEND

TIE TO EXIST. 50mm PVC FORCE SEWER PIPE USING 1-50mm D.J. 45° BEND AND NECESSARY FITTINGS

PROP. 54M OF 200mm PVC FORCE SEWER PIPE, SDR 21, L38MPa WP

PROP. 154M OF 50mm PVC FORCE SEWER PIPE, SDR 21, L38MPa WP

PROP. 170M OF 150mm PVC FORCE SEWER PIPE, SDR 21, L38MPa WP

PROP. 1-200mm D.J. 11/4" BEND

PROP. 1-200mm D.J. WYE

PROP. 65M OF 200mm PVC FORCE SEWER PIPE, SDR 21, L38MPa WP

PROP. 1-200mm D.J. 45° BEND

PROP. 1-200mm D.J. 11/4" BEND

PROP. 1-200mm D.J. 11/4" BEND