

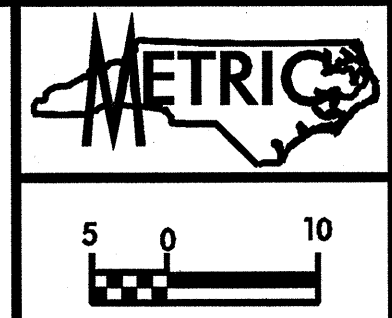
REVISIONS

-Y5-  
 PI Sta 10+94.810  
 $\Delta = 7^{\circ} 58' 16.7''$  (LT)  
 L = 62.607  
 T = 31.354  
 R = 450.000

-Y5-  
 PI Sta 12+07.553  
 $\Delta = 36^{\circ} 20' 27.7''$  (RT)  
 L = 69.770  
 T = 36.103  
 R = 110.000

MARGRETT ANNE  
 ARNOLD SANDERS  
 DB 330 - PG 308

TIE TO EXIST. 75mm FORCE SEWER PIPE  
 USING I- 75mm D.I. 22 1/2" BEND AND  
 NECESSARY FITTINGS

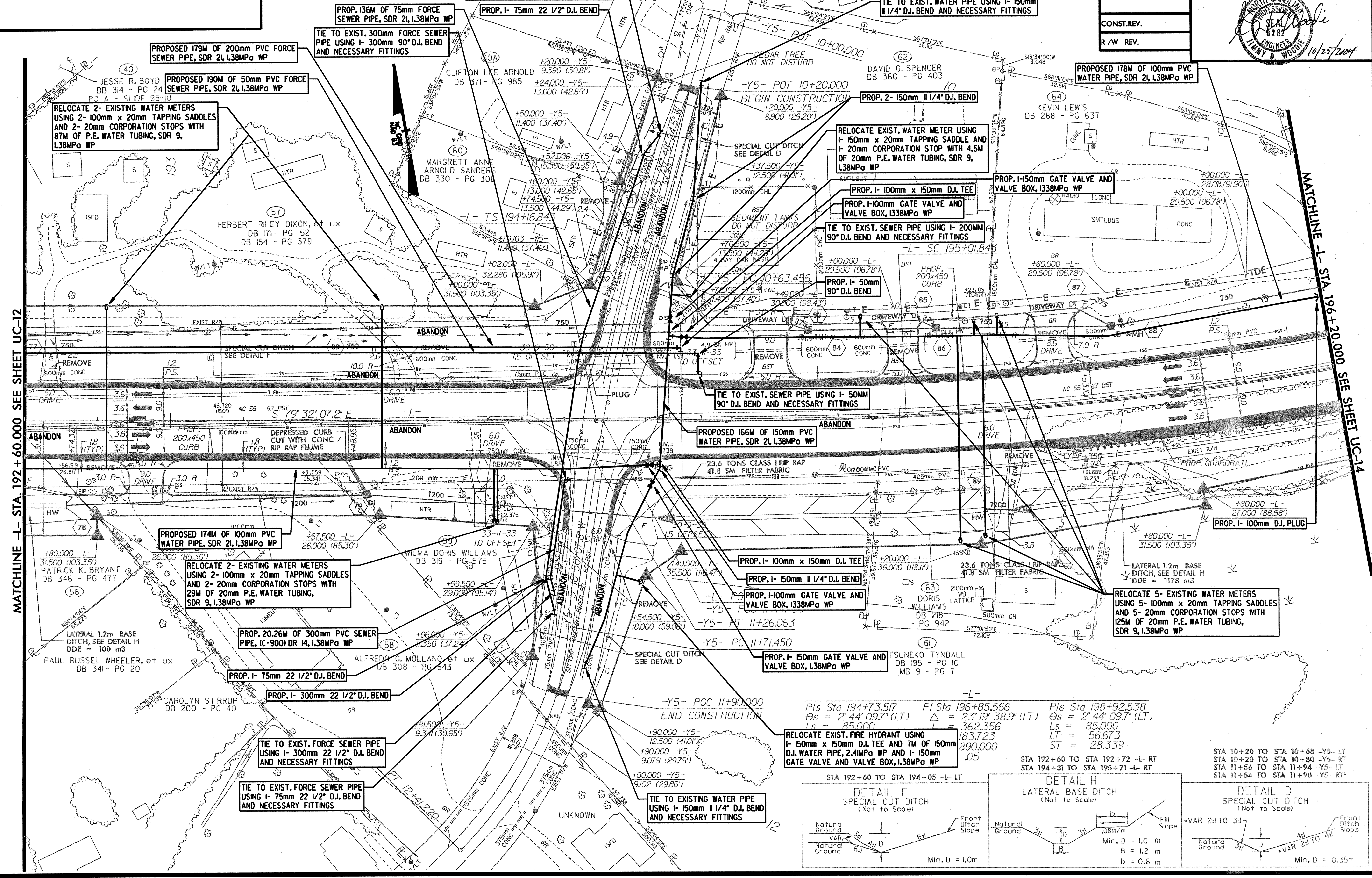


PROJECT REFERENCE NO. R-2539C  
 SHEET NO. UC-13  
 R/W SHEET NO.

Municipal Engineering Services Company, P.A.  
 P.O. BOX 311 CAROLINA, N.C. 27513  
 P.O. BOX 348 BOONE, N.C. 28601  
 P.O. BOX 110111 RALEIGH, N.C. 27611

Professional Engineer Seal  
 JIMMY D. WOODIE  
 10/25/2004

CONST. REV.  
 R/W REV.



MATCHLINE -L- STA. 192 + 60.000 SEE SHEET UC-12

MATCHLINE -L- STA. 196 + 20.000 SEE SHEET UC-14

Pls Sta 194+73.517  
 $\Delta = 2^{\circ} 44' 09.7''$  (LT)  
 Ls = 85.000  
 LT = 183.723  
 ST = 890.000

PI Sta 196+85.566  
 $\Delta = 23^{\circ} 19' 38.9''$  (LT)  
 Ls = 362.356  
 LT = 890.000

Pls Sta 198+92.538  
 $\Delta = 2^{\circ} 44' 09.7''$  (LT)  
 Ls = 85.000  
 LT = 56.673  
 ST = 28.339

STA 192+60 TO STA 194+05 -L- LT

STA 192+60 TO STA 192+72 -L- RT

STA 194+31 TO STA 195+71 -L- RT

