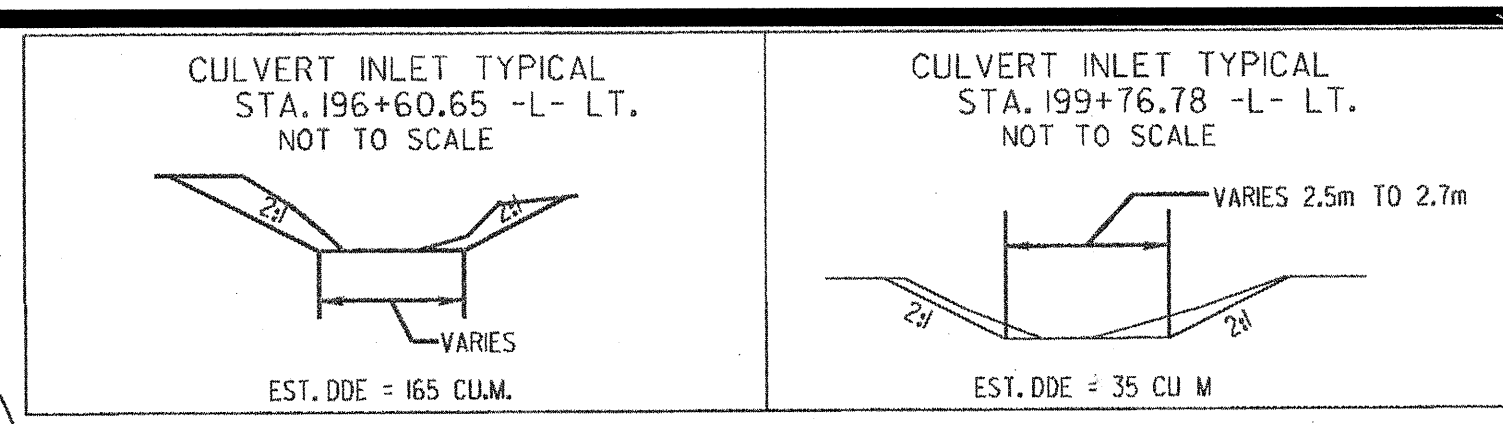


REVISIONS

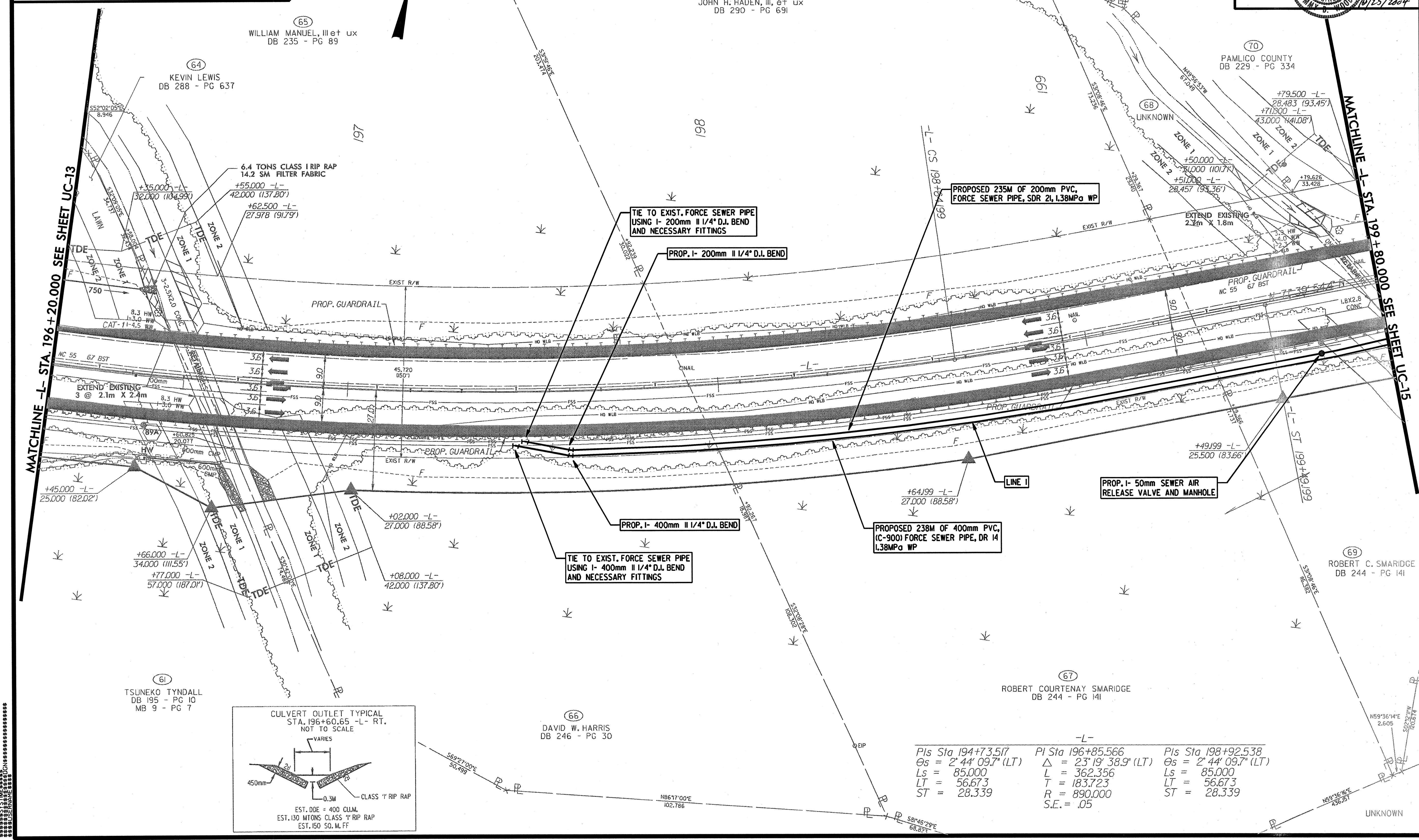


PROJECT REFERENCE NO. **R-2539C** SHEET NO. **UC-14**
 R/W SHEET NO.

Municipal Engineering
 Services Company, P.A.
 P.O. BOX 311 CARMER, N.C. 27525 P.O. BOX 348 BOONE, N.C. 28607
 (703) 775-2333 (828) 862-1147

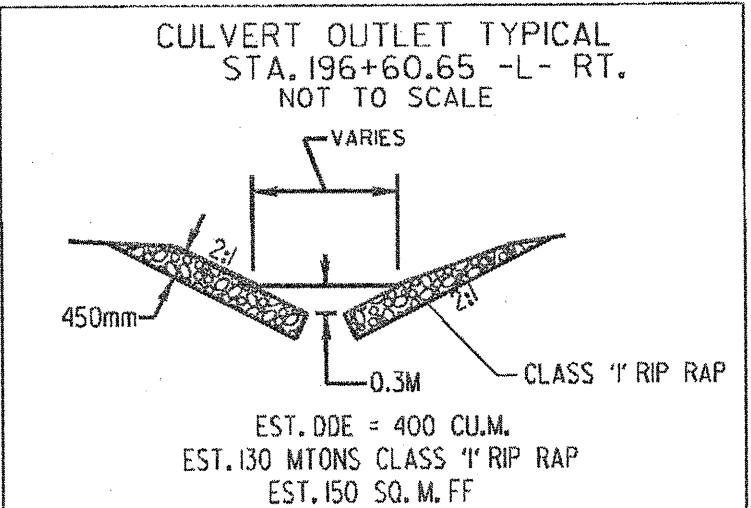
Professional Engineer
 JOHN H. HADEN, III
 No. 12572
 10/25/2004

CONST. REV.
 R/W REV.



MATCHLINE -L- STA. 196 + 20.000 SEE SHEET UC-13

MATCHLINE -L- STA. 199 + 80.000 SEE SHEET UC-15



-L-	-L-	-L-
PIs Sta. 194+73.517	PI Sta. 196+85.566	PIs Sta. 198+92.538
Os = 2' 44" 09.7" (LT)	Δ = 23' 19" 38.9" (LT)	Os = 2' 44" 09.7" (LT)
Ls = 85,000	L = 362.356	Ls = 85,000
LT = 56.673	T = 183.723	LT = 56.673
ST = 28.339	R = 890,000	ST = 28.339
	S.E. = .05	

DATE PLOTTED: 10/25/04 10:58 AM