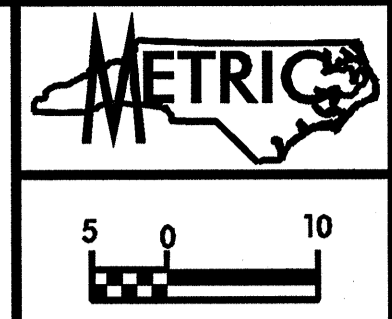
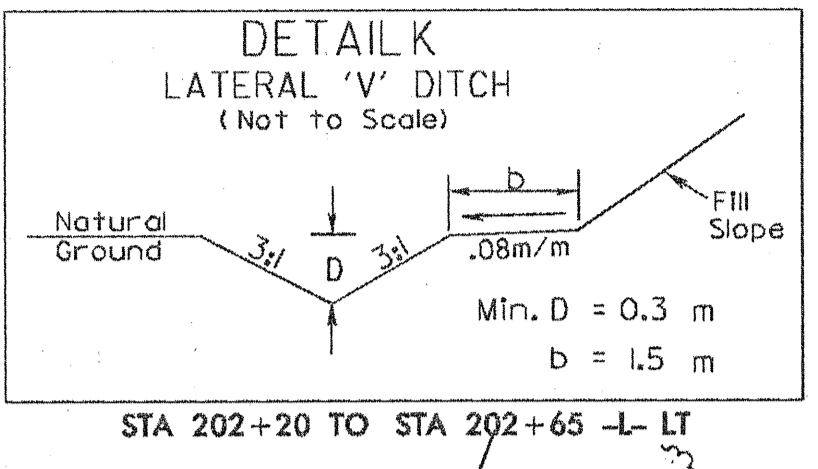
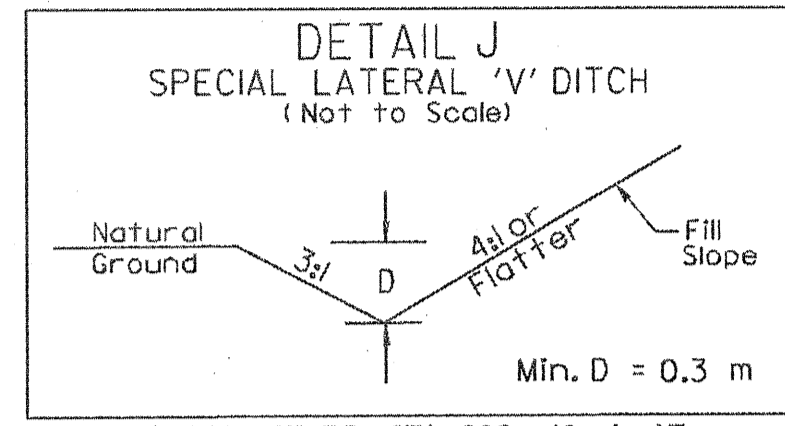


REVISIONS

-L-
 PIs Sta 200+29.662 PI Sta 201+04.418 PIs Sta 201+79.144
 Es = 0° 43' 49.9" (LT) Δ = 3° 18' 30.0" (LT) Es = 0° 43' 49.9" (LT)
 Ls = 51.000 L = 115.482 Ls = 51.000
 LT = 34.000 T = 57.757 LT = 34.000
 ST = 17.000 R = 2000.000 ST = 17.000
 S.E. = .03

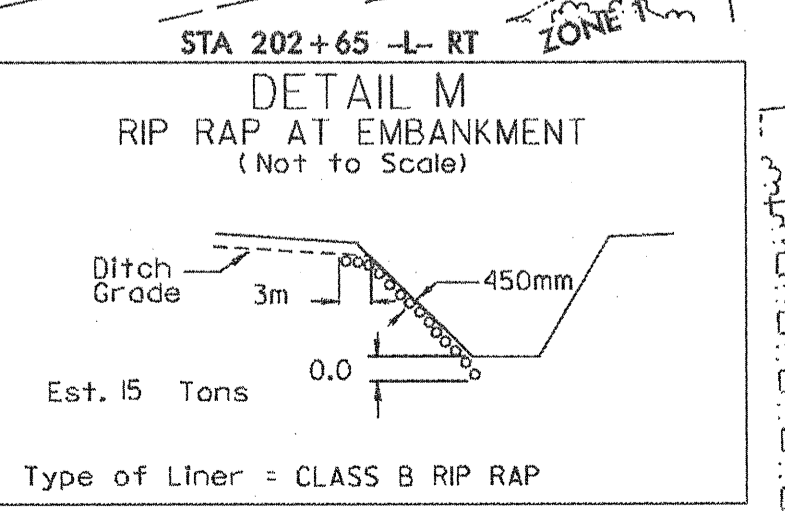
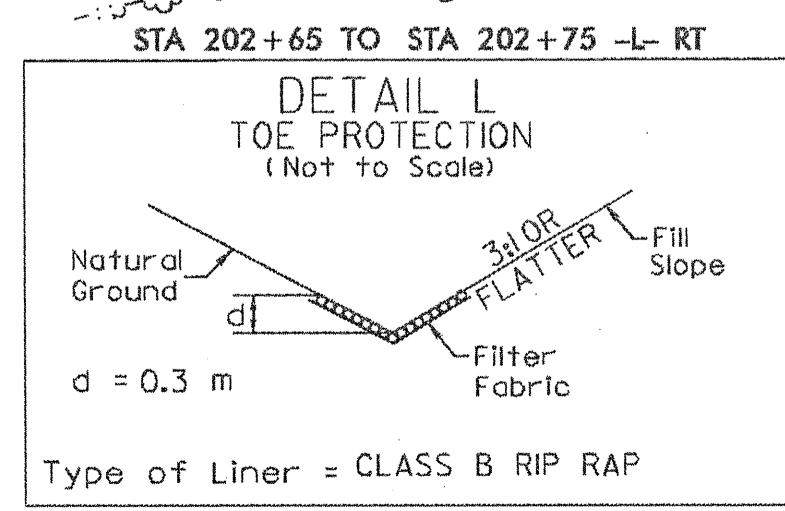
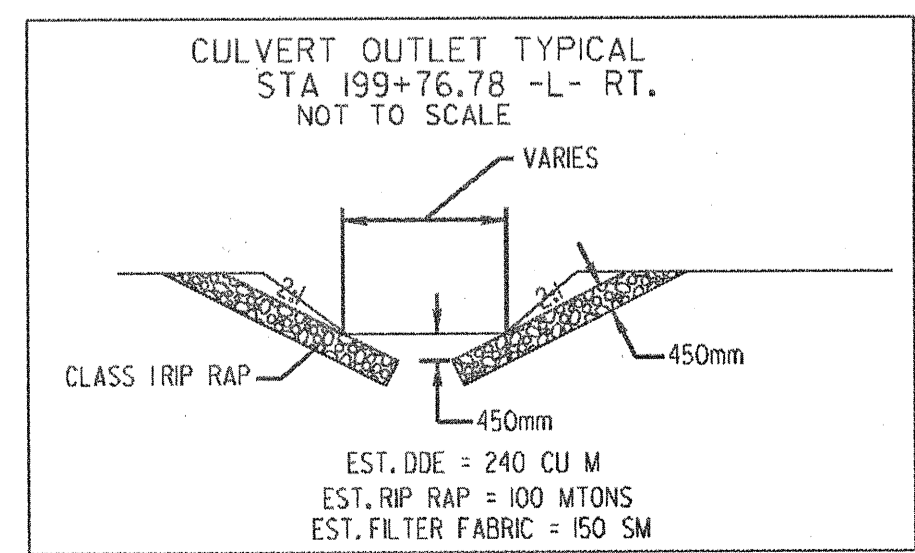
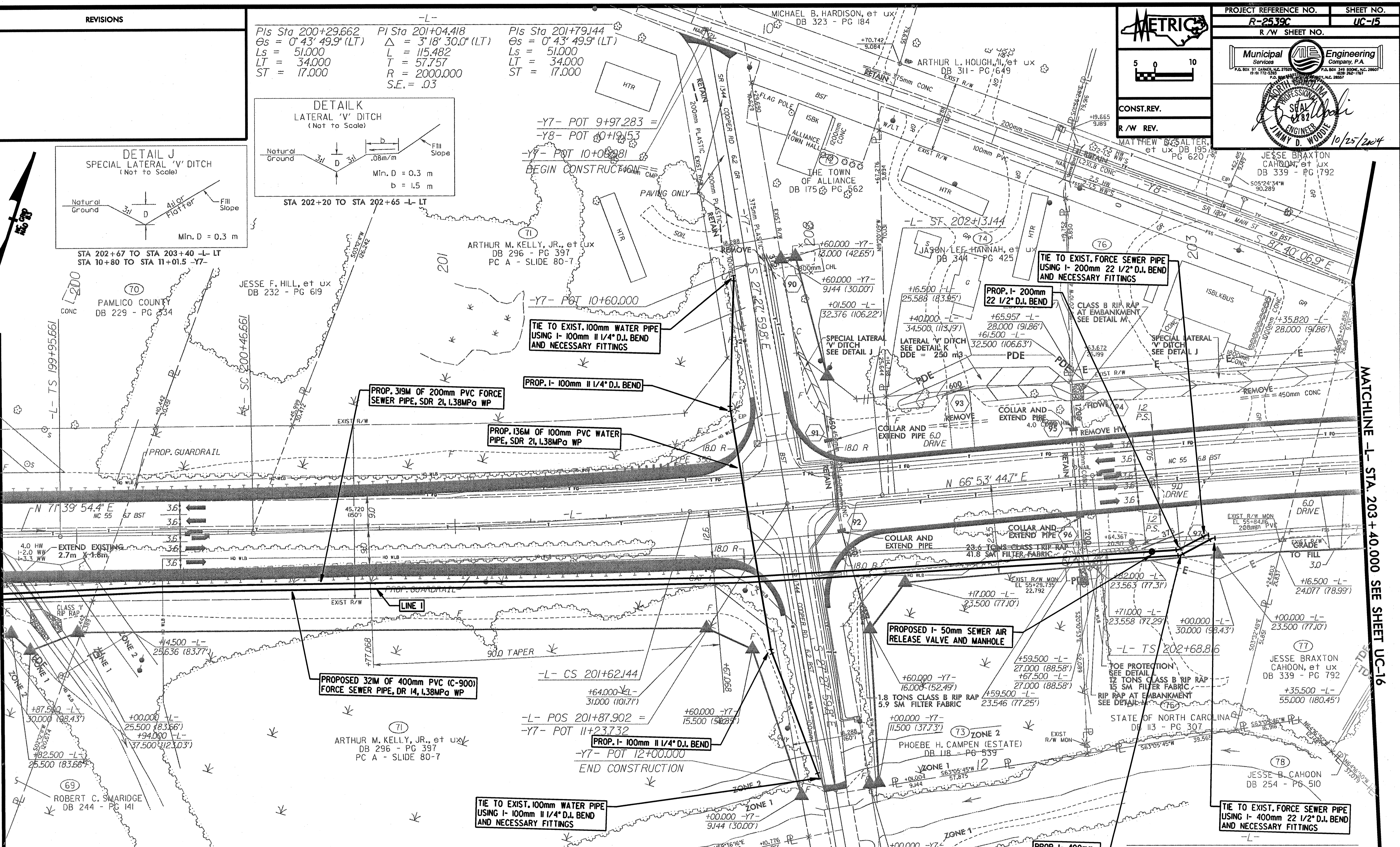


PROJECT REFERENCE NO. **R-2539C** SHEET NO. **UC-15**
 R/W SHEET NO.
Municipal Engineering Services, Inc.
 P.O. Box 311, Raleigh, NC 27602
 P.A. No. 170-2330
 P.E. No. 170-2330
 P.E. No. 170-2330
Professional Seal
 JIMMY D. WOODIE
 10/25/2004
 JESE BRAXTON CAHOON, et ux DB 339 - PG 792
 MATTHEW B. GALTER, et ux DB 195 PG 620



MATCHLINE -L- STA. 199 + 80.000 SEE SHEET UC-14

MATCHLINE -L- STA. 203 + 40.000 SEE SHEET UC-16



PIs Sta 203+36.847 PI Sta 204+73.628
 Es = 5° 18' 46.4" (RT) Δ = 21° 10' 34.6" (RT)
 Ls = 102.000 L = 203.278
 LT = 68.031 T = 102.812
 ST = 34.028 R = 550.000
 S.E. = .04

SYSTEMS ENGINEERING