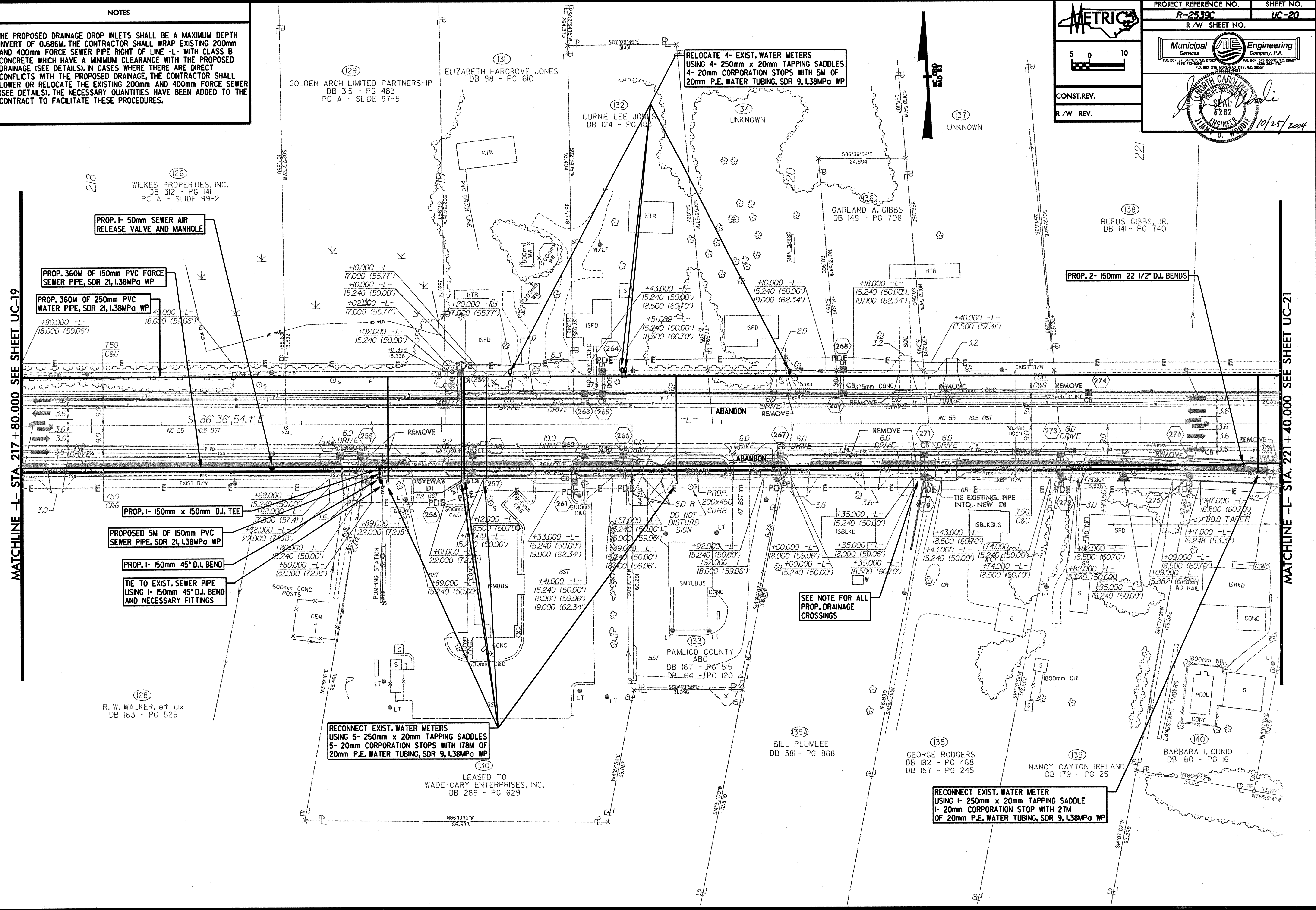


NOTES

1. THE PROPOSED DRAINAGE DROP INLETS SHALL BE A MAXIMUM DEPTH INVERT OF 0.686M. THE CONTRACTOR SHALL WRAP EXISTING 200mm AND 400mm FORCE SEWER PIPE RIGHT OF LINE -L- WITH CLASS B CONCRETE WHICH HAVE A MINIMUM CLEARANCE WITH THE PROPOSED DRAINAGE (SEE DETAILS). IN CASES WHERE THERE ARE DIRECT CONFLICTS WITH THE PROPOSED DRAINAGE, THE CONTRACTOR SHALL LOWER OR RELOCATE THE EXISTING 200mm AND 400mm FORCE SEWER (SEE DETAILS). THE NECESSARY QUANTITIES HAVE BEEN ADDED TO THE CONTRACT TO FACILITATE THESE PROCEDURES.

PROJECT REFERENCE NO. R-2539C	SHEET NO. UC-20
R/W SHEET NO.	
CONST. REV.	
R/W REV.	



MATCHLINE -L- STA. 217 + 80.000 SEE SHEET UC-19

MATCHLINE -L- STA. 221 + 40.000 SEE SHEET UC-21

PROP. 1- 50mm SEWER AIR RELEASE VALVE AND MANHOLE

PROP. 360M OF 150mm PVC FORCE SEWER PIPE, SDR 21, L38MPa WP

PROP. 360M OF 250mm PVC WATER PIPE, SDR 21, L38MPa WP

PROP. 1- 150mm x 150mm D.I. TEE

PROPOSED 5M OF 150mm PVC SEWER PIPE, SDR 21, L38MPa WP

PROP. 1- 150mm 45° D.I. BEND

TIE TO EXIST. SEWER PIPE USING 1- 150mm 45° D.I. BEND AND NECESSARY FITTINGS

RELOCATE 4- EXIST. WATER METERS USING 4- 250mm x 20mm TAPPING SADDLES 4- 20mm CORPORATION STOPS WITH 5M OF 20mm P.E. WATER TUBING, SDR 9, L38MPa WP

RECONNECT EXIST. WATER METERS USING 5- 250mm x 20mm TAPPING SADDLES 5- 20mm CORPORATION STOPS WITH 178M OF 20mm P.E. WATER TUBING, SDR 9, L38MPa WP

RECONNECT EXIST. WATER METER USING 1- 250mm x 20mm TAPPING SADDLE 1- 20mm CORPORATION STOP WITH 27M OF 20mm P.E. WATER TUBING, SDR 9, L38MPa WP

SEE NOTE FOR ALL PROP. DRAINAGE CROSSINGS

DATE: 10/25/2004
TIME: 10:00 AM
USER: JWW