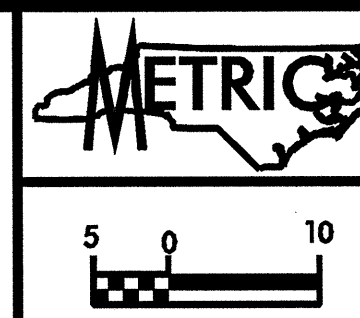
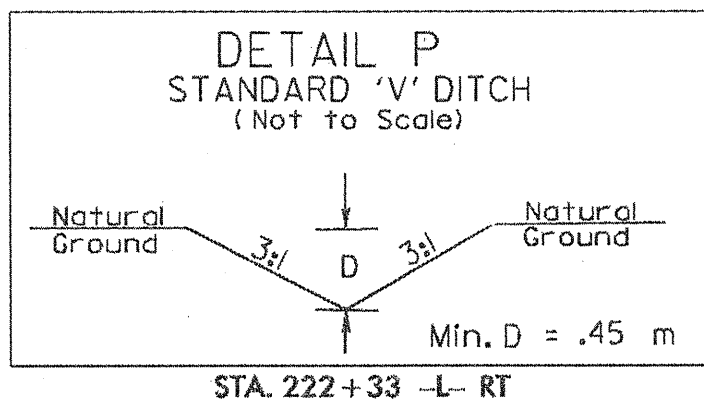


NOTES

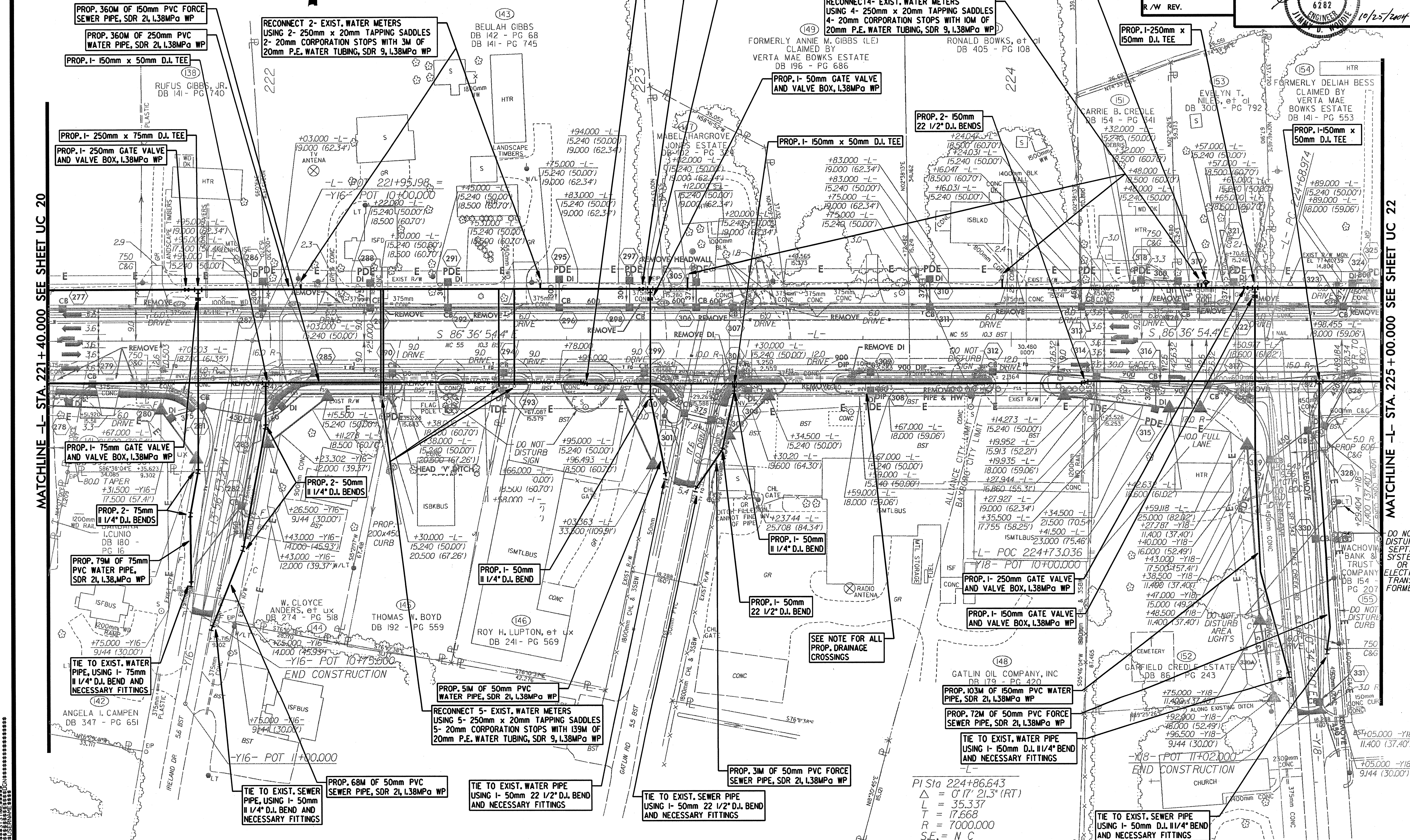
1. THE PROPOSED DRAINAGE DROP INLETS SHALL BE A MAXIMUM DEPTH INVERT OF 0.686M. THE CONTRACTOR SHALL WRAP EXISTING 200mm AND 400mm FORCE SEWER PIPE RIGHT OF LINE -L- WITH CLASS B CONCRETE WHICH HAVE A MINIMUM CLEARANCE WITH THE PROPOSED DRAINAGE (SEE DETAILS). IN CASES WHERE THERE ARE DIRECT CONFLICTS WITH THE PROPOSED DRAINAGE, THE CONTRACTOR SHALL LOWER OR RELOCATE THE EXISTING 200mm AND 400mm FORCE SEWER (SEE DETAILS). THE NECESSARY QUANTITIES HAVE BEEN ADDED TO THE CONTRACT TO FACILITATE THESE PROCEDURES.



PROJECT REFERENCE NO. R-2539C SHEET NO. UC-21  
R/W SHEET NO.  
Municipal Engineering Services Company, P.A.  
Professional Engineer Seal for D. WOODIE, No. 6282, dated 10/25/2004.

MATCHLINE -L- STA. 221+40.000 SEE SHEET UC 20

MATCHLINE -L- STA. 225+00.000 SEE SHEET UC 22



PROP. 360M OF 150mm PVC FORCE SEWER PIPE, SDR 21, L38MPa WP

PROP. 360M OF 250mm PVC WATER PIPE, SDR 21, L38MPa WP

PROP. 1- 150mm x 50mm D.I. TEE

PROP. 1- 250mm x 75mm D.I. TEE

PROP. 1- 250mm GATE VALVE AND VALVE BOX, L38MPa WP

PROP. 1- 150mm x 50mm D.I. TEE

PROP. 1- 150mm x 50mm D.I. TEE

PROP. 1- 150mm x 50mm D.I. TEE

PROP. 1- 150mm x 50mm D.I. TEE

PROP. 1- 150mm x 50mm D.I. TEE

PROP. 1- 150mm x 50mm D.I. TEE

PROP. 1- 150mm x 50mm D.I. TEE

PROP. 1- 150mm x 50mm D.I. TEE

PROP. 1- 150mm x 50mm D.I. TEE

PROP. 1- 150mm x 50mm D.I. TEE

PROP. 1- 150mm x 50mm D.I. TEE

PROP. 1- 150mm x 50mm D.I. TEE

PROP. 1- 150mm x 50mm D.I. TEE

PROP. 1- 150mm x 50mm D.I. TEE

PROP. 1- 150mm x 50mm D.I. TEE

PROP. 1- 150mm x 50mm D.I. TEE

PROP. 1- 150mm x 50mm D.I. TEE

PROP. 1- 150mm x 50mm D.I. TEE

PROP. 1- 150mm x 50mm D.I. TEE

PROP. 1- 150mm x 50mm D.I. TEE

PROP. 1- 150mm x 50mm D.I. TEE

PROP. 1- 150mm x 50mm D.I. TEE

PROP. 1- 150mm x 50mm D.I. TEE

PROP. 1- 150mm x 50mm D.I. TEE

PROP. 1- 150mm x 50mm D.I. TEE

PROP. 1- 150mm x 50mm D.I. TEE

PROP. 1- 150mm x 50mm D.I. TEE

RECONNECT 2- EXIST. WATER METERS USING 2- 250mm x 20mm TAPPING SADDLES 2- 20mm CORPORATION STOPS WITH 3M OF 20mm P.E. WATER TUBING, SDR 9, L38MPa WP

BEULAH GIBBS DB 142 - PG 68 DB 141 - PG 745

PROP. 2- 150mm 22 1/2" D.I. BENDS

PROP. 1- 250mm GATE VALVE AND VALVE BOX, L38MPa WP

PROP. 1- 250mm x 50mm D.I. TEE

RECONNECT 4- EXIST. WATER METERS USING 4- 250mm x 20mm TAPPING SADDLES 4- 20mm CORPORATION STOPS WITH 10M OF 20mm P.E. WATER TUBING, SDR 9, L38MPa WP

RELOCATE EXIST. FIRE HYDRANT USING 1- 250mm x 150mm D.I. TEE AND 1.5M OF 150mm D.I. WATER PIPE, 2.4MPa WP AND 1- 150mm GATE VALVE AND VALVE BOX, L38MPa WP

PROP. 1- 250mm x 150mm D.I. TEE

PROP. 1- 50mm GATE VALVE AND VALVE BOX, L38MPa WP

PROP. 1- 150mm x 50mm D.I. TEE

PROP. 2- 150mm 22 1/2" D.I. BENDS

PROP. 1- 150mm x 50mm D.I. TEE

PROP. 1- 75mm GATE VALVE AND VALVE BOX, L38MPa WP

PROP. 2- 75mm 1/4" D.I. BENDS

PROP. 79M OF 75mm PVC WATER PIPE, SDR 21, L38MPa WP

TIE TO EXIST. WATER PIPE, USING 1- 75mm 1/4" D.I. BEND AND NECESSARY FITTINGS

PROP. 2- 50mm 1/4" D.I. BENDS

PROP. 1- 50mm 1/4" D.I. BEND

PROP. 1- 50mm 1/4" D.I. BEND

PROP. 1- 50mm 22 1/2" D.I. BEND

PROP. 1- 250mm GATE VALVE AND VALVE BOX, L38MPa WP

PROP. 1- 150mm GATE VALVE AND VALVE BOX, L38MPa WP

PROP. 51M OF 50mm PVC WATER PIPE, SDR 21, L38MPa WP

RECONNECT 5- EXIST. WATER METERS USING 5- 250mm x 20mm TAPPING SADDLES 5- 20mm CORPORATION STOPS WITH 139M OF 20mm P.E. WATER TUBING, SDR 9, L38MPa WP

PROP. 31M OF 50mm PVC FORCE SEWER PIPE, SDR 21, L38MPa WP

TIE TO EXIST. SEWER PIPE USING 1- 50mm 22 1/2" D.I. BEND AND NECESSARY FITTINGS

TIE TO EXIST. WATER PIPE USING 1- 50mm 22 1/2" D.I. BEND AND NECESSARY FITTINGS

TIE TO EXIST. SEWER PIPE, USING 1- 50mm 1/4" D.I. BEND AND NECESSARY FITTINGS

PROP. 68M OF 50mm PVC SEWER PIPE, SDR 21, L38MPa WP

SEE NOTE FOR ALL PROP. DRAINAGE CROSSINGS

PI Sta 224+86.643  
Δ = 0°17' 21.3" (RT)  
L = 35.337  
T = 17.668  
R = 7000.000  
S.E. = N C

TIE TO EXIST. SEWER PIPE USING 1- 50mm D.I. 1/4" BEND AND NECESSARY FITTINGS

DO NOT DISTURB SEPTIC SYSTEM OR ELECTRIC TRANSFORMER

DO NOT DISTURB CURB

DO NOT DISTURB CURB