

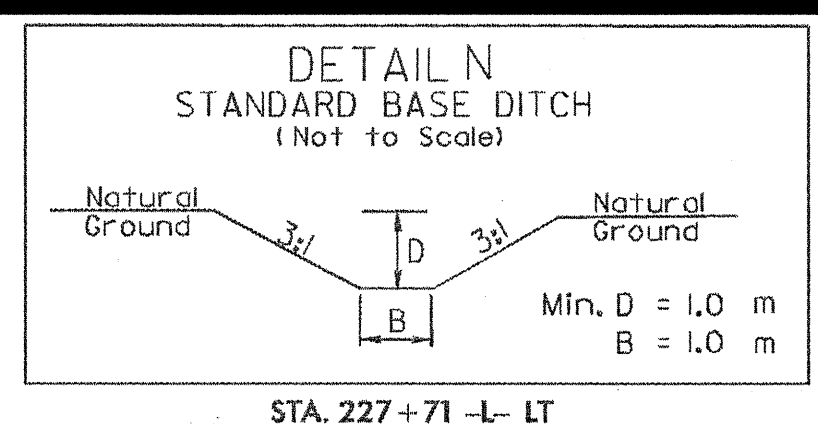
NOTES

1. THE PROPOSED DRAINAGE DROP INLETS SHALL BE A MAXIMUM DEPTH INVERT OF 0.686M. THE CONTRACTOR SHALL WRAP EXISTING 200mm AND 400mm FORCE SEWER PIPE RIGHT OF LINE -L- WITH CLASS B CONCRETE WHICH HAVE A MINIMUM CLEARANCE WITH THE PROPOSED DRAINAGE (SEE DETAILS), IN CASES WHERE THERE ARE DIRECT CONFLICTS WITH THE PROPOSED DRAINAGE, THE CONTRACTOR SHALL LOWER OR RELOCATE THE EXISTING 200mm AND 400mm FORCE SEWER (SEE DETAILS). THE NECESSARY QUANTITIES HAVE BEEN ADDED TO THE CONTRACT TO FACILITATE THESE PROCEDURES.

CAROLINE C. GOODWIN
DB 122 - PG 528
DB 124 - PG 150

EVA E. HUMPHREY and
BONNIE W. HUMPHREY
DB 235 - PG 874
DB 303 - PG 462

ROBERT RAY
SANDERS, et ux
DB 319 - PG 397



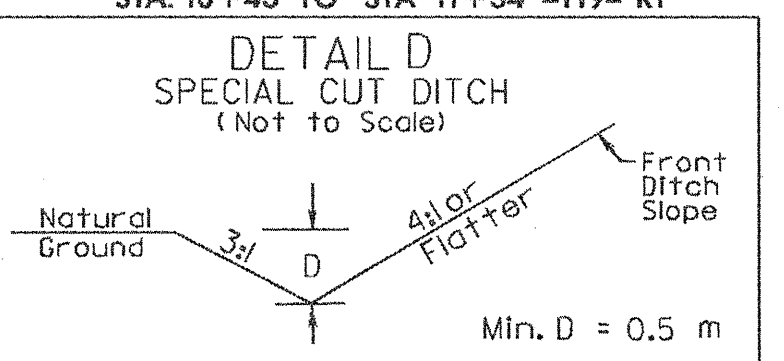
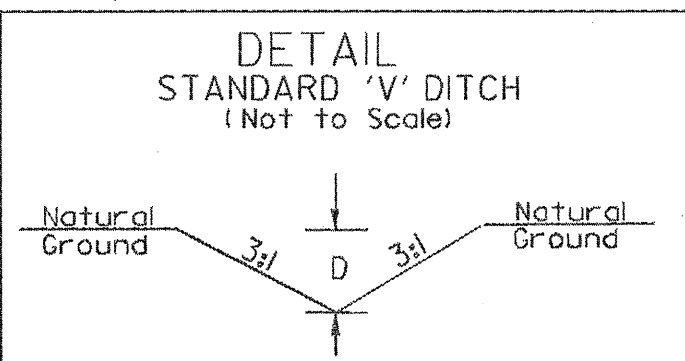
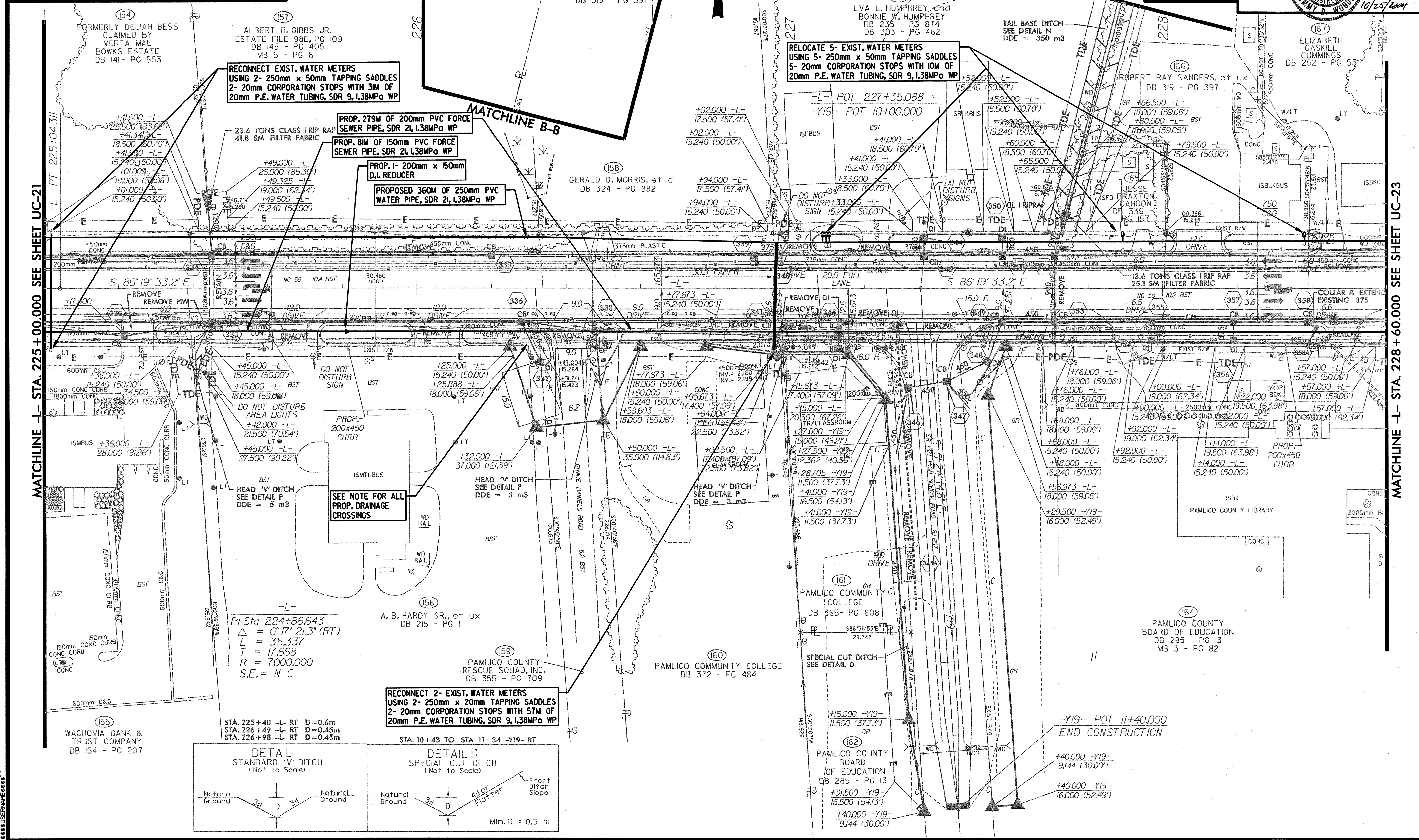
PROJECT REFERENCE NO. R-2539C SHEET NO. UC-22

R/W SHEET NO.

Municipal Engineering Services Company, P.A.

Professional Engineer Seal: JIMMY D. WOODIE, No. 10257, State of North Carolina, expires 10/25/2007.

ELIZABETH GASKILL CUMMINGS DB 252 - PG 53



*****SYSTEMS ENGINEERING*****