

NOTES

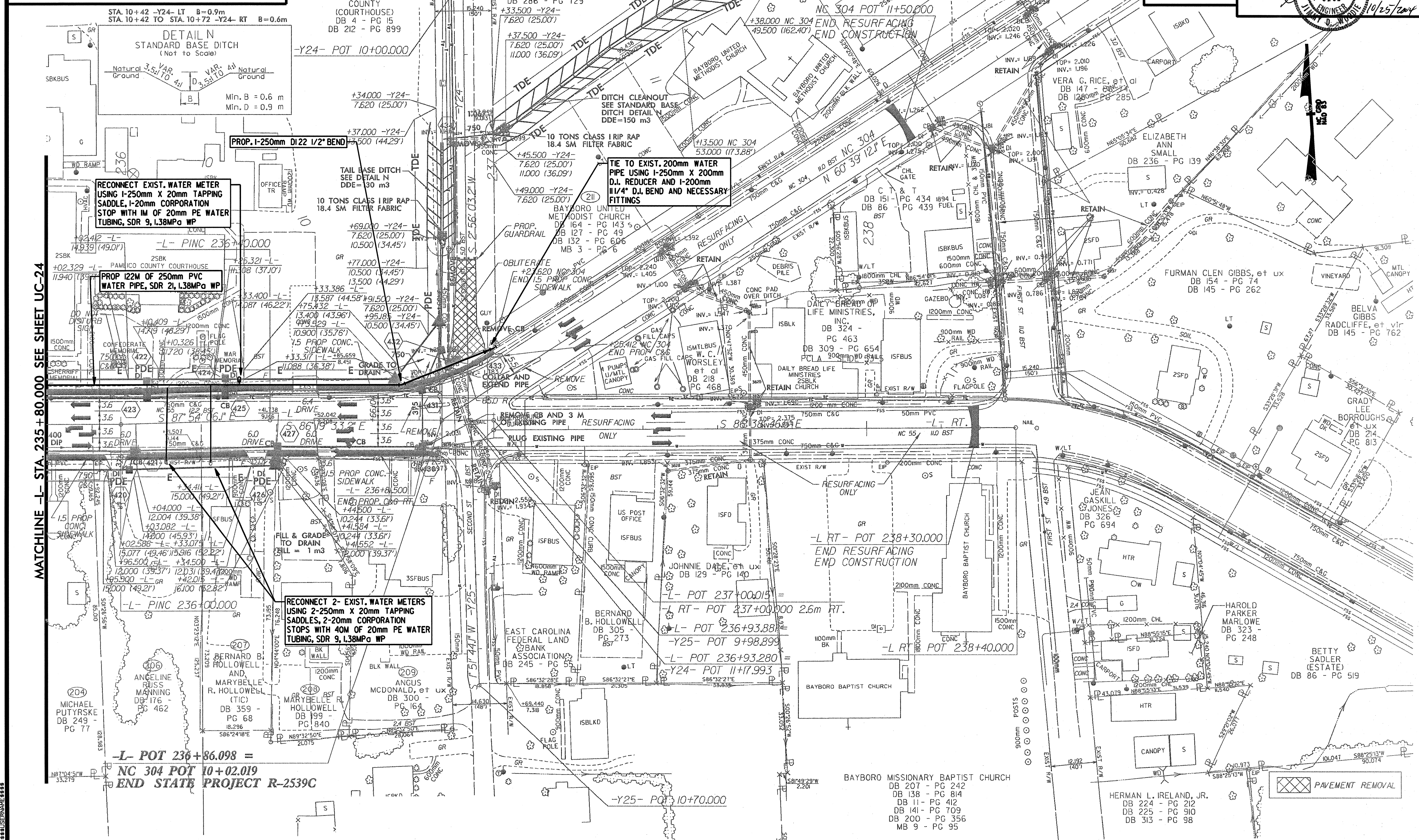
1. THE PROPOSED DRAINAGE DROP INLETS SHALL BE A MAXIMUM DEPTH INVERT OF 0.686M. THE CONTRACTOR SHALL WRAP EXISTING 200mm AND 400mm FORCE SEWER PIPE RIGHT OF LINE -L- WITH CLASS B CONCRETE WHICH HAVE A MINIMUM CLEARANCE WITH THE PROPOSED DRAINAGE (SEE DETAILS). IN CASES WHERE THERE ARE DIRECT CONFLICTS WITH THE PROPOSED DRAINAGE, THE CONTRACTOR SHALL LOWER OR RELOCATE THE EXISTING 200mm AND 400mm FORCE SEWER (SEE DETAILS). THE NECESSARY QUANTITIES HAVE BEEN ADDED TO THE CONTRACT TO FACILITATE THESE PROCEDURES.

PROJECT REFERENCE NO. **R-2539C** SHEET NO. **UC-25**
 R/W SHEET NO.

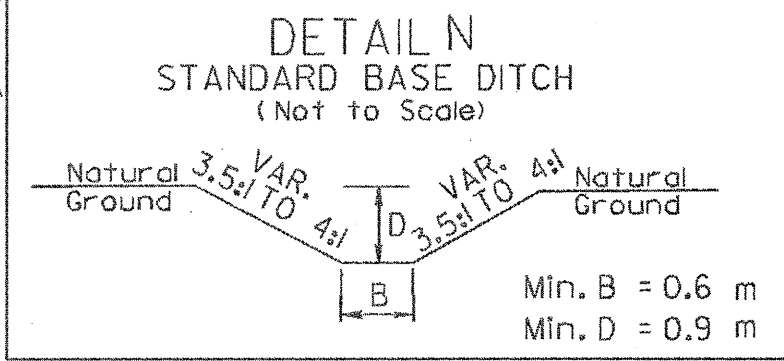
METRIC
 Municipal Engineering Services
 P.O. BOX 276 CARRBORO, N.C. 27513
 P.O. BOX 345 BOONE, N.C. 28607
 P.O. BOX 276 MORRISTOWN, N.C. 28661

CONST. REV.
 R/W REV.

Professional Engineer Seal: **SEAL 6242**
JIMMY D. WARD
 10/25/2014



MATCHLINE -L- STA. 235+80.000 SEE SHEET UC-24



RECONNECT EXIST. WATER METER USING I-250mm X 20mm TAPPING SADDLE, I-20mm CORPORATION STOP WITH IM OF 20mm PE WATER TUBING, SDR 9, I,38MPa WP

PROP I22M OF 250mm PVC WATER PIPE, SDR 21, I,38MPa WP

RECONNECT 2- EXIST. WATER METERS USING 2-250mm X 20mm TAPPING SADDLES, 2-20mm CORPORATION STOPS WITH 40M OF 20mm PE WATER TUBING, SDR 9, I,38MPa WP

TIE TO EXIST. 200mm WATER PIPE USING I-250mm X 200mm D.I. REDUCER AND I-200mm 1/4\"/>

-L- POT 236+86.098 =
NC 304 POT 10+02.019
 END STATE PROJECT R-2539C

PAVEMENT REMOVAL